



COMPANY	SANTOS AND PARTNERS		
WELL	CUISINIER 14		
FIELD	CUISINIER		
RIG NAME	SAXON 188	COUNTRY	AUSTRALIA - QLD
LOCATION:	LAT: 026 DEG 40' 0785" S		
	LICENCE: PL 303		
ELEVATIONS:			
	KB	-	DF 115.21 M GL 109.91 M
DATE	01-APR-2014		ECC

BOREHOLE RECORD

CASING RECORD

REMARKS

PROCESSING NOTES

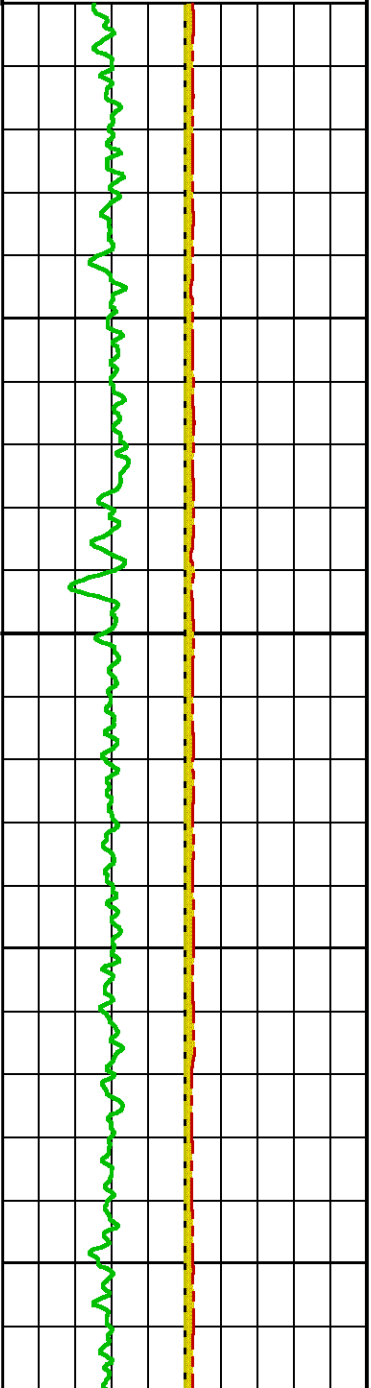
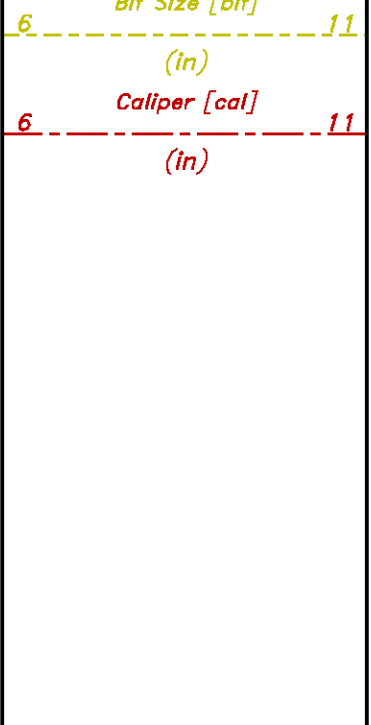
DTC=COMPRESSIONAL SLOWNESS DERIVED FROM WEIGHTED AVERAGE OF DTCR AND DTCX.
DTCR=COMPRESSIONAL SLOWNESS DERIVED FROM MONOPOLE RECEIVER ARRAY CORRELATION
DTCX=COMPRESSIONAL SLOWNESS DERIVED FROM MONOPOLE TRANSMITTER ARRAY
CORRELATION.

DTSD=SHEAR SLOWNESS FROM DIPOLE RECEIVER ARRAY CORRELATION

DT24=FIELD DERIVED COMPRESSIONAL SLOWNESS FROM FIRST ARRIVAL METHOD.

Cuisinier 14 Semblance Processing

washout		METERS	RECEIVER CORRELATION	QC INDICATOR	TRANSMITTER CORRELATION	QC INDICATOR	WAVEFORM – TRAVEL TIME QC	DIPOLE CORRELATION	FINAL COMPUTED CURVES
Gamma Ray [gr]			P WAVE RECEIVER SLOWNESS [dtr] 240 40		P WAVE TRANSMITTER SLOWNESS [dtr] 240 40		Travel Time Compression 0 4000	Dipole Shear Slowness [dtsd] 540 40	POIS
(api)			(us/ft)		(us/ft)		(us)	(us/ft)	FIELD DT24 [dt24qi]
250			REFRACTED S WAVE RECEIVER SLOWNESS [dtsr] 240 40		REFRACTED S WAVE TRANSMITTER SLOWNESS [dtsr] 240 40		540 40	Dipole Correlation Image 540 40	20



1480

1500

1520

