

## **APPENDIX 8**

### **Kevins Corner (Galilee Basin) Preliminary interpretation, 2009 trial seismic line**

**ALPHA COAL**  
**ALPHA 2009 TRIAL SEISMIC LINE - PRELIMINARY INTERPRETATION**  
**SCALE 1:1**

INTERPRETATION NOTES  
 Faults appearing on sections have been interpreted with varying levels of confidence.  
 RED = Probable Faulting (Confident interpretation)  
 BLUE = Possible Faulting (Reduced confidence)  
 Consideration must be given to the errors associated with all measurements.  
 Estimates of fault displacement may have errors in the order of +/- 2.5m.  
 Structure position may have errors in the order of +/- 15m.

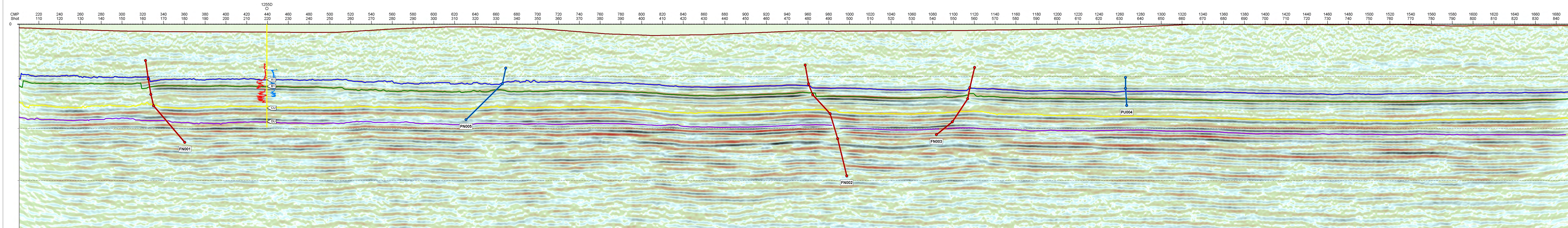
With the frequency of the data available and given that these are 2D seismic data, the interpretation of confident (probable) structures is generally limited to those with throws greater than 3m. Displacements shown as <3m are provided as a guide only and should be treated with caution.

Where possible structures have been interpreted at the A1, B1 and CU seam roof level. The location data appearing in the table below represents the position that the Up-thrown side of the fault intersects the seam.

**FAULT CHARACTERISATION DATA**  
 Fault characterisation data appearing in the table below corresponds to the fault names annotated at the base of the structures on the vertical section. The fault naming convention is 2 characters followed by a 3 digit number. Character 1 = F or P (Probable or Possible faulting)  
 Character 2 = N, R, T (Normal, Reverse, Thrust fault style)

FAULT ID	EASTING	NORTHING	THROW. m	UPTHROWN SEAM
FN001	436167	7438978	9.8	S A1
FN001	436167	7438970	9.8	S B1
FN001	436170	7438997	5.6	S CU
FN001	436174	7439032	<3	S DU
FN002	436395	7440872	5.0	S A1
FN002	436397	7440869	9.0	S B1
FN002	436403	7440942	7.0	S CU
FN002	436403	7440945	6.0	S DU
FN003	436449	7441330	6.5	N A1
FN003	436449	7441326	6.3	N B1
FN003	436446	7441298	<3	N CU
FN003	436446	7441258	<3	N DU
PN005	436290	7440003	5.0	N A1
PN005	436297	7439971	5.7	N B1
PU004	436280	7439916	<3	N CU
PU004	436503	7441780	<3	N A1
PU004	436504	7441781	<3	N B1

Please note the section shown is a time section and is referenced as Two-way Time.  
 The table which follows provides an approximate time to depth conversion with the depth referenced to sea level (AHD).  
 The seismic section is referenced to a seismic datum of 450m that is 0ms=450m (AHD).



Surface

A1

B1

CU

DU