

## **APPENDIX 5**

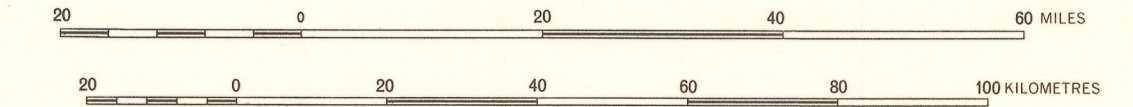
### **Coal AtPs 1970s Map scans of Bowen and Galilee basins**





DEPARTMENT OF MINES, QUEENSLAND  
**CENTRAL QUEENSLAND  
 COAL AREAS**

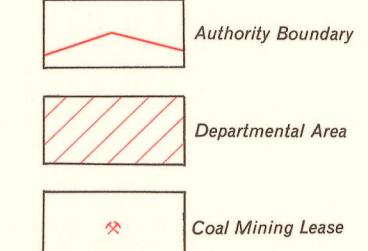
Scale 1:1,000,000



Base map by courtesy of the Department of National Development.  
 Additional information added by the Drafting Branch, Department of Mines.  
 Simple Conic Projection on Two Standard Parallels.

Price: \$4.00  
 S. G. Reid, Government Printer  
 CROWN COPYRIGHT RESERVED

Reference

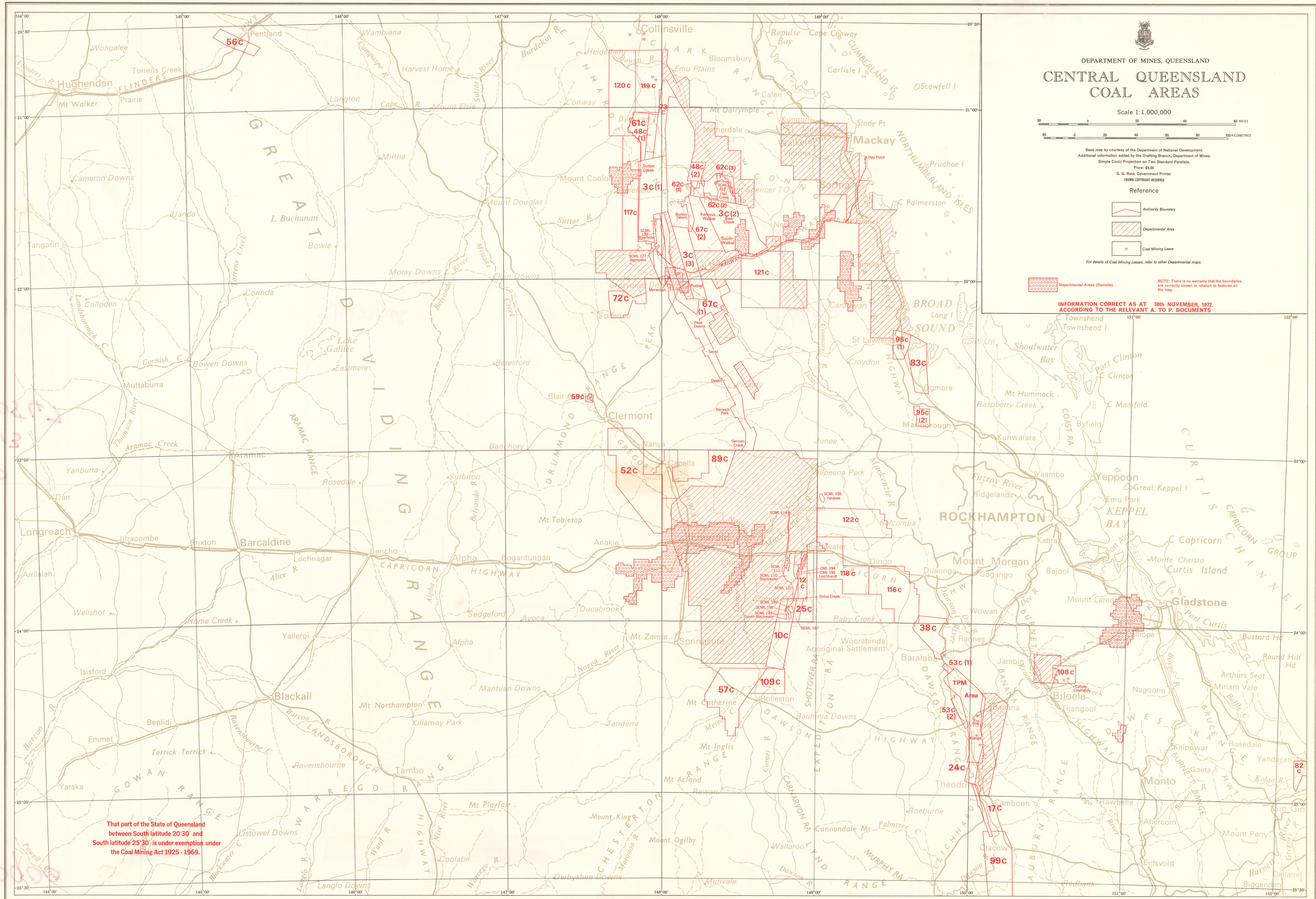


For details of Coal Mining Leases, refer to other Departmental maps.



NOTE: There is no warranty that the boundaries are correctly shown in relation to features on the map.

INFORMATION CORRECT AS AT 30th NOVEMBER, 1972.  
 ACCORDING TO THE RELEVANT A. TO P. DOCUMENTS



That part of the State of Queensland between South latitude 20° 30' and South latitude 25° 30' is under exemption under the Coal Mining Act 1925 - 1969.

50205  
 573

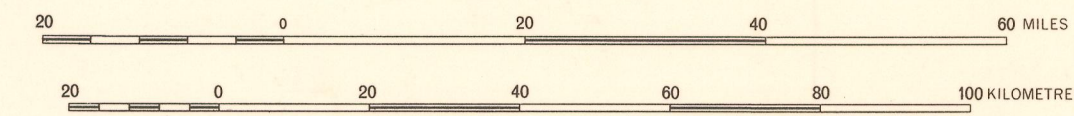
50205  
 573



# CENTRAL QUEENSLAND COAL AREAS

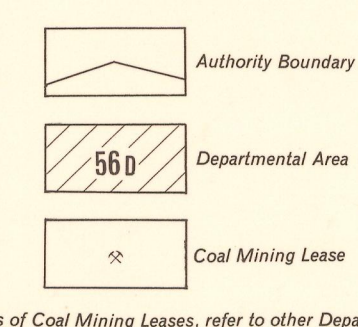
DEPARTMENT OF MINES, QUEENSLAND

Scale 1:1,000,000



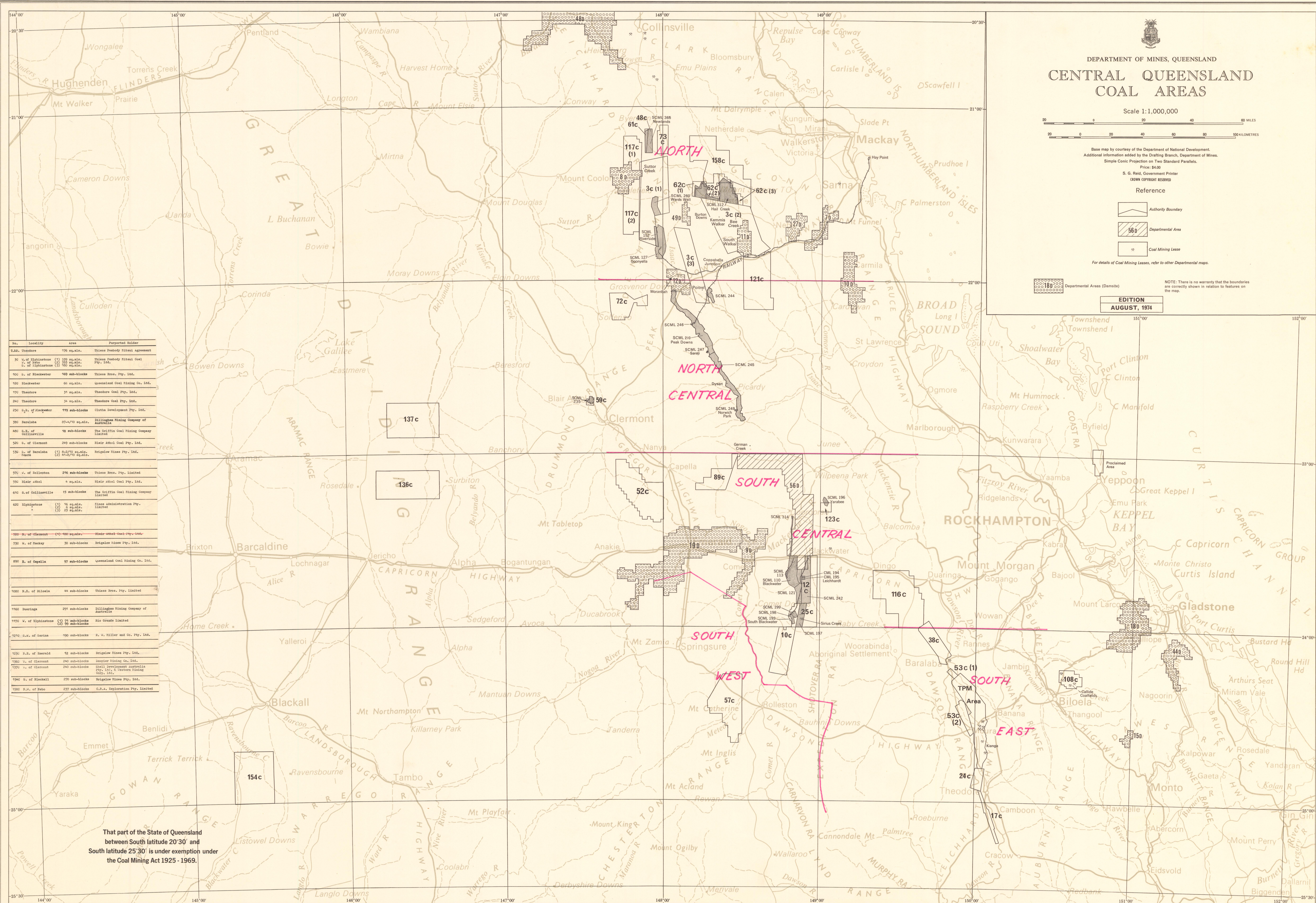
Base map by courtesy of the Department of National Development.  
Additional information added by the Drafting Branch, Department of Mines.  
Simple Conic Projection on Two Standard Parallels.  
Price: \$4.00  
S. G. Reid, Government Printer  
(CROWN COPYRIGHT RESERVED)

Reference



For details of Coal Mining Leases, refer to other Departmental maps.  
NOTE: There is no warranty that the boundaries are correctly shown in relation to features on the map.

EDITION  
AUGUST, 1974



No.	Locality	Area	Purported Holder
10	N. of Theodore	170 sq. mls.	Thames Peabody Mining Agreement
11	N. of Blackwater	100 sq. mls.	Thames Peabody Mining Agreement
12	N. of Blackwater	60 sq. mls.	Queensland Coal Mining Co. Ltd.
13	Theodore	31 sq. mls.	Theodore Coal Pty. Ltd.
14	Theodore	24 sq. mls.	Theodore Coal Pty. Ltd.
15	N. of Blackwater	199 sq. blocks	Cittha Development Pty. Ltd.
16	Baralaba	275-470 sq. mls.	Billingham Mining Company of Australia
17	S. of Collinsville	10 sq. blocks	The Griffin Coal Mining Company Limited
18	S. of Blackwater	249 sq. blocks	Blair Athol Coal Pty. Ltd.
19	S. of Baralaba	(1) 8-270 sq. mls. (2) 41-670 sq. mls.	Regalase Mines Pty. Ltd.
20	N. of Rolleston	276 sq. blocks	Thames Peab. Pty. Limited
21	Blair Athol	4 sq. mls.	Blair Athol Coal Pty. Ltd.
22	S. of Collinsville	15 sq. blocks	The Griffin Coal Mining Company Limited
23	Blackwater	(1) 16 sq. mls. (2) 8 sq. mls. (3) 23 sq. mls.	Thames Administration Pty. Limited
24	N. of Blackwater	40 sq. blocks	Regalase Mines Pty. Ltd.
25	S. of Capella	77 sq. blocks	Queensland Coal Mining Co. Ltd.
26	S. of Blackwater	44 sq. blocks	Thames Peab. Pty. Limited
27	Duaringa	291 sq. blocks	Billingham Mining Company of Australia
28	N. of Blackwater	(1) 71 sq. blocks (2) 99 sq. blocks	Six Strands Limited
29	S.W. of Cairns	190 sq. blocks	S. V. Miller and Co. Pty. Ltd.
30	S. of Emerald	12 sq. blocks	Regalase Mines Pty. Ltd.
31	N. of Blackwater	240 sq. blocks	Investor Mining Co. Ltd.
32	N. of Blackwater	240 sq. blocks	Black Development Australia Pty. Ltd. & Western Mining Corp. Ltd.
33	S. of Blackall	270 sq. blocks	Regalase Mines Pty. Ltd.
34	S.W. of Bebo	237 sq. blocks	C.S.A. Exploration Pty. Limited

That part of the State of Queensland between South latitude 20° 30' and South latitude 25° 30' is under exemption under the Coal Mining Act 1925 - 1969.



**MAP D. 1** **JANUARY 1979**

**DEPARTMENT OF MINES, QUEENSLAND**  
**EXPLORATION SERIES**  
**(COAL)**

# CENTRAL QUEENSLAND

SHOWING MINING DISTRICTS  
 SCALE 1:1 000 000

Prepared by the Drafting Section, Department of Mines, Brisbane  
 under the Authority of the Honourable R. E. Camm, Minister for Mines, M.L.A.  
 Simple Conic Projection on One Standard Parallel  
 Price: \$4.00 including Supplement  
 S.R. Hampson, Government Printer  
 CROWN COPYRIGHT RESERVED

**REFERENCE**

	Authority to Prospect*		Departmental Area
	Mining Lease (Coal)		Sara Mine or Locality

\*The area covered by this map is contained within Departmental Area 553, "Central Queensland Coal Area."  
 \*When referring to an Authority to Prospect for Coal, the number should be suffixed by the letter "C", e.g. 100C.  
 For more accurate information regarding boundaries, refer to plans and block descriptions available from the Department of Mines, 2 Edward Street, Brisbane.

