



ACN
121 572 192

EPM 26526 “Auburn”

Partial Relinquishment Report to 4th December 2018

**R Grayson
Geologist
January 2019**

TABLE OF CONTENTS

- **Summary**
- **Introduction**
 - **Resource Authority Information**
 - **General area Information**
 - **Location map**
 - **Geology**
- **Technical Summary**
 - **Exploration rationale**
 - **Previous work**
 - **Work in Reporting Period and discussion**
 - **Reason for Relinquishment**
 - **Future work programs**
- **Copyright Statement**

SUMMARY

EPM 26526 “Auburn” was granted to Auburn Resources Ltd on the 4th of January 2018 in respect of 62 sub-blocks. Auburn Resources is a subsidiary of DGR Global Limited.

Archer Resources Ltd is exploring adjacent EPMS 26013 and 26248. Initial reconnaissance prospecting using stream sediment sampling and subsequent soils and rock geochemistry, has located a large strong copper (gold platinum palladium) target in EPM 26013. Areas of epithermal agate and chalcedony breccia were noted extending eastwards from the copper prospect in drainages anomalous in antimony gold and arsenic. The copper is associated with gabbro contacts and the vein systems are associated with rhyodacite porphyry dykes and associated volcanics.

Additionally, recent work in EPM 26248 has partially outlined a large gold copper (moly) porphyry system adjacent to the Hawkwood gabbro.

To the south, Iron Ridge Resources have announced significant bauxite resources around Monogorilby and high-grade gold intercepts at May Queen.

This portion of the Auburn magmatic arc has seen little modern exploration, hence it has been easy for Auburn Resources to develop major new targets from grassroots activity.

The EPM area is perceived to be prospective for epithermal gold, gabbro hosted copper PGE, and possibly porphyry gold – copper.

During the first year, no field work was carried out as this is the newest EPM to be granted and surface sampling on the adjacent EPM’s was completed by the time the grant was approved. A VTEM survey was flown over the Hawkwood Project area but did not cover this EPM. Thirty-five sub-blocks were offered for voluntary relinquishment on December 4th, 2018 leaving 27 sub-blocks for year 2.

1.0 INTRODUCTION

1.1 Resource Authority Information

EPM 26526 “Auburn” was granted to Auburn Resources Ltd on the 4th of January 2018 in respect of 62 sub-blocks for a period of 3 years. Auburn Resources is a subsidiary of DGR Global Limited. Auburn has currently 8 EPM’s involved in the Westwood Project.

Thirty-five sub-blocks were offered for voluntary relinquishment on December 4th, 2018 leaving 27 sub-blocks for year 2.

The Partial Relinquishment Report describes the work carried out on the relinquished sub-blocks since grant and is a condition of the permit.

1.2 General Area Information

The tenement area is about 25km west of Mundubbera in Southern Queensland.

1.3 Location map

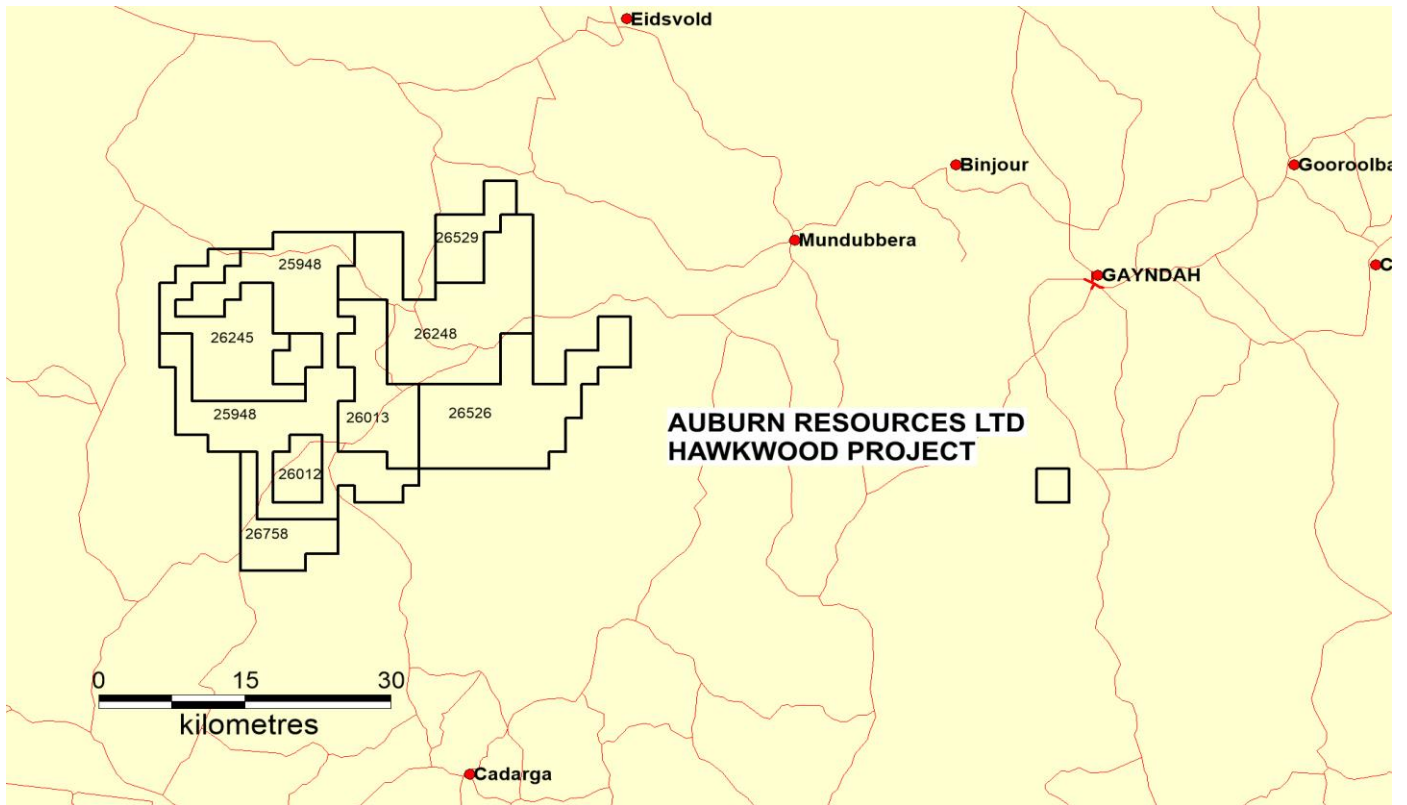


Figure 1 - Location EPM 26526

1.4 Geology

The tenement is located within Auburn Sub-Province of the Connors-Auburn Arch, within the New England Orogen. The Connors-Auburn Province is the volcanic arc of the northern New England Orogen separating the backarc Bowen Basin from the forearc Yarrol Province. The main unit is the Permian aged Narayen Beds which consist of volcanics and sediments of andesitic origin. Several basic intrusives outcrop, of most interest is the gabbro, and layered gabbros of Permian-Triassic age.

Post-orogenic geology is the Cretaceous Jurassic Mulgildie basin rocks of the Evergreen Formation. Overlying these are Tertiary sediments and Quaternary unconsolidated shales, gravels, sand, clays and laterites.

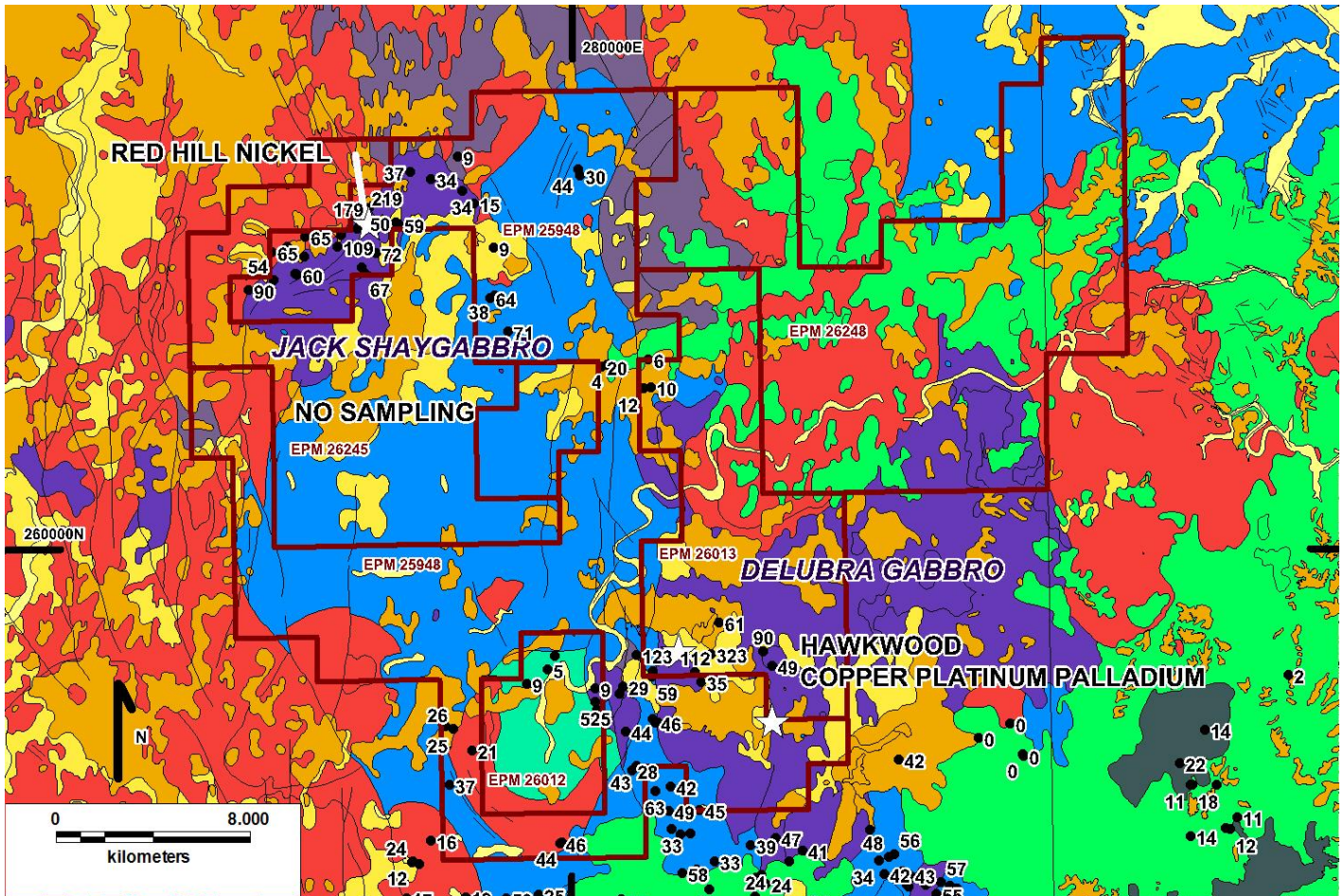


Figure 2 – Geology of Hawkwood Project Area

TECHNICAL SUMMARY

1.4 Exploration rationale

Archer Resources Ltd is exploring adjacent EPMS 26013 and 26248. Initial reconnaissance prospecting using stream sediment sampling and subsequent soils and rock geochemistry, has located a large strong copper (gold platinum palladium) target in EPM 26013. Areas of epithermal agate and chalcedony breccia were noted extending eastwards from the copper prospect in drainages anomalous in antimony gold and arsenic. The copper is associated with gabbro contacts and the vein systems are associated with rhyodacite porphyry dykes and associated volcanics.

Additionally, recent work in EPM 26248 has partially outlined a large gold copper (moly) porphyry system adjacent to the Hawkwood gabbro.

To the south, Iron Ridge Resources have announced significant bauxite resources around Monogorilby and high-grade gold intercepts at May Queen.

This portion of the Auburn magmatic arc has seen little modern exploration, hence it has been easy for Auburn Resources to develop major new targets from grassroots activity.

The EPM area is perceived to be prospective for epithermal gold, gabbro hosted copper PGE, and possibly porphyry gold – copper.

Auburn Resources has currently 8 EPM's involved in the Westwood Project.

2.2 Previous work

The Auburn and previous explorers work in this district also suggests that there are numerous zones of epithermal chalcedony that need to be explored for gold.

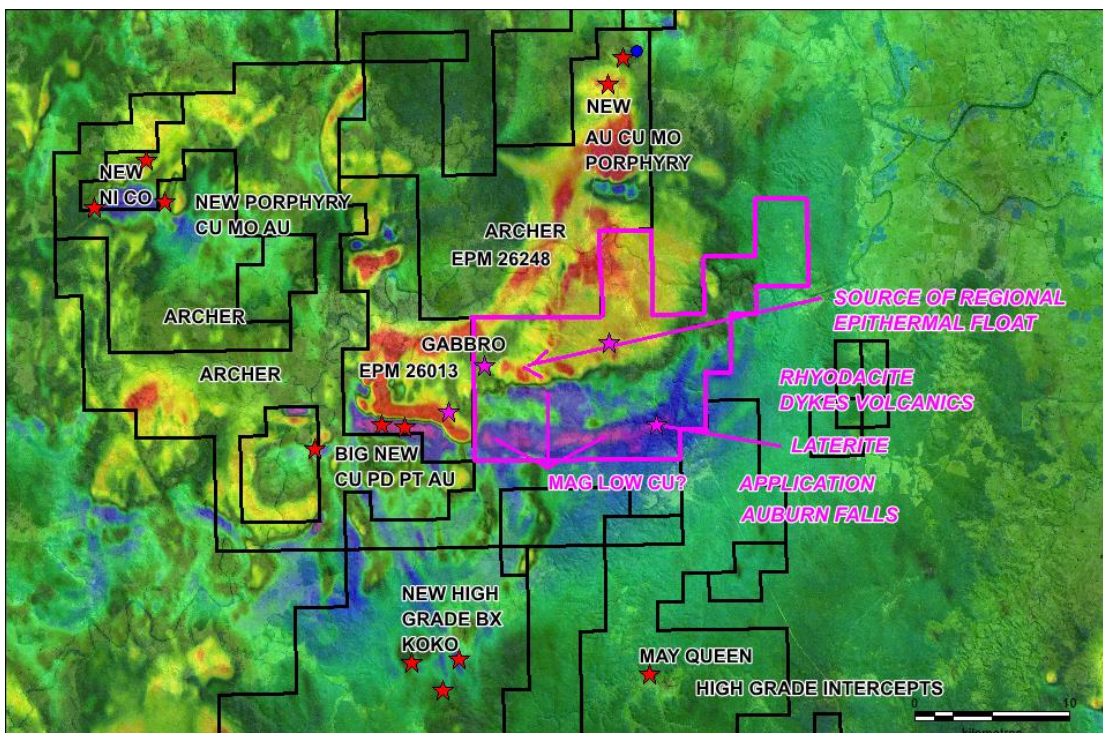


Figure 3 – EPM 26526 outlined in pink

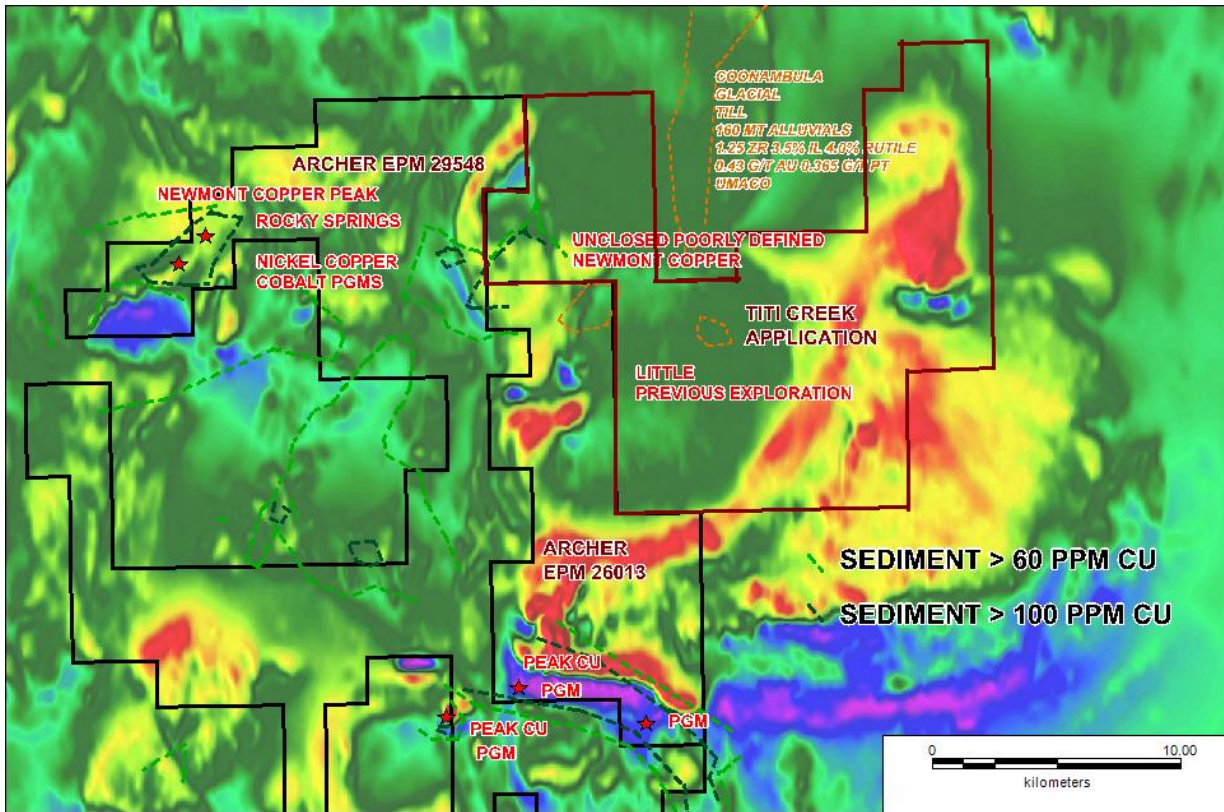


Figure 4 – Hawkwood Project area on magnetics with historical Cu geochemistry contours

2.2 Work in Reporting Period and discussion

During the first year, no field work was carried out as this is the newest EPM to be granted and surface sampling on the adjacent EPM's was completed by the time the grant was approved. A VTEM survey was flown over the Hawkwood Project area but did not cover this EPM. Thirty-five sub-blocks were offered for voluntary relinquishment on December 4th, 2018 leaving 27 sub-blocks for year 2.

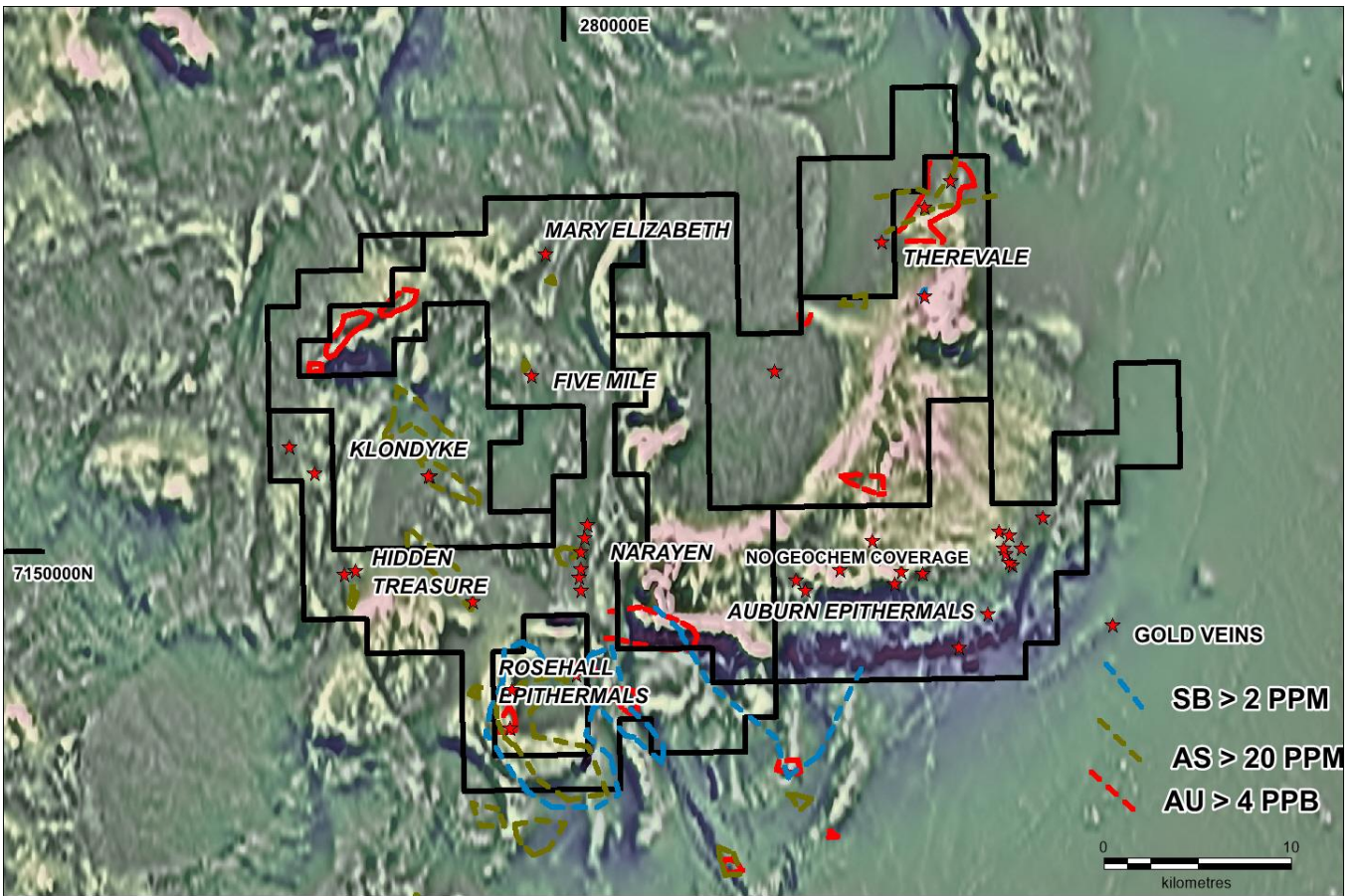


Figure 5 - Auburn TMI on Vd epithermal gold

2.3 Reason for Relinquishment

Auburn Resources decided to relinquish excess land tenure throughout the Hawkwood Project area in December 2018.

BLOCK	SUB-BLOCKS	NO. OF SUB BLOCKS
BRIS 1452	V W	2
BRIS 1453	F G L M P Q R U V W X Y Z	13
BRIS 1454	B C G H M N	6
BRIS 1525	A B C D E F G H J M N O R S	14
TOTAL		35

The following 27 sub-blocks will be retained:

BLOCK	SUB-BLOCKS	NO. OF SUB BLOCKS
BRIS 1452	X Y Z	3
BRIS 1454	L Q	2
BRIS 1524	A B C D E F G H J K L M N O P Q R S T U	20
BRIS 1525	L Q	2
TOTAL		27

151D	1451E	1452A	1452B	1452C	1452D	1452E	1453A	1453B	1453C	1453D	1453E	1454A	1454B	1454C	1454D	1454E	1455A
AUBURN RESOURCES PL																	
151J	1451K	1452F	1452G	1452H	1452J	1452K	1453F	1453G	1453H	1453J	1453K	1454F	1454G	1454H	1454J	1454K	1455F
151O	1451P	1452L	1452M	1452N	1452O	1452P	1453L	1453M	1453N	1453O	1453P	1454L	1454M	1454N	1454O	1454P	1455L
151T	1451U	1452Q	1452R	1452S	1452T	1452U	1453Q	1453R	1453S	1453T	1453U	1454Q	1454R	1454S	1454T	1454U	1455Q
EPM 26526 "AUBURN"																	
151Y	1451Z	1452V	1452W	1452X	1452Y	1452Z	1453V	1453W	1453X	1453Y	1453Z	1454V	1454W	1454X	1454Y	1454Z	1455V
1523D	1523E	1524A	1524B	1524C	1524D	1524E	1525A	1525B	1525C	1525D	1525E	1526A	1526B	1526C	1526D	1526E	1527A
												BRISBANE DISTRICT					
1523J	1523K	1524F	1524G	1524H	1524J	1524K	1525F	1525G	1525H	1525J	1525K	1526F	1526G	1526H	1526J	1526K	1527F
1523O	1523P	1524L	1524M	1524N	1524O	1524P	1525L	1525M	1525N	1525O	1525P	1526L	1526M	1526N	1526O	1526P	1527L
1523T	1523U	1524Q	1524R	1524S	1524T	1524U	1525Q	1525R	1525S	1525T	1525U	1526Q	1526R	1526S	1526T	1526U	1527Q

Figure 6 – Relinquished (red crosses) sub-block map for EPM 26526

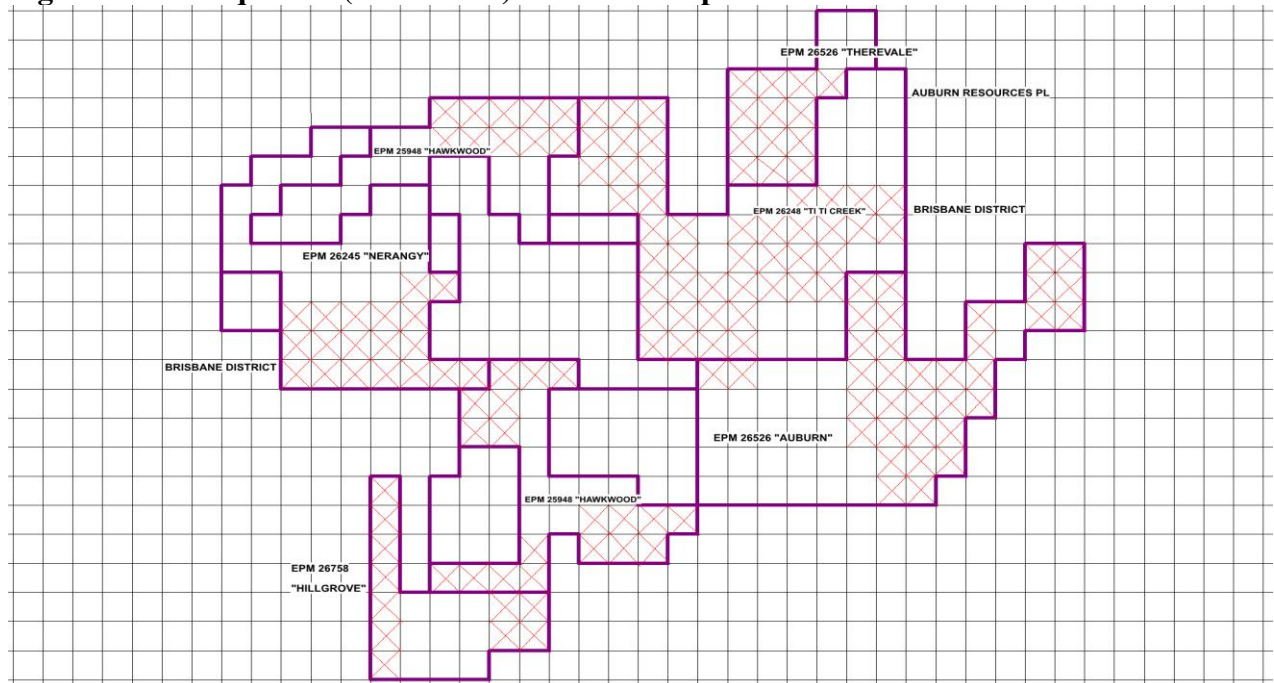


Figure 7 – Overall sub-block map of the relinquished areas of the Hawkwood Project.

3.0 Future work programs

Work next term will involve geological mapping and sampling of the tenement. It is expected year 1 & 2 work program will be carried out in year 2.

4.0 Copyright Statement

The contents of this report remain the property of "Auburn Resources Ltd." and may not be published in whole or in part nor used in a company prospectus without the written consent of the company.