

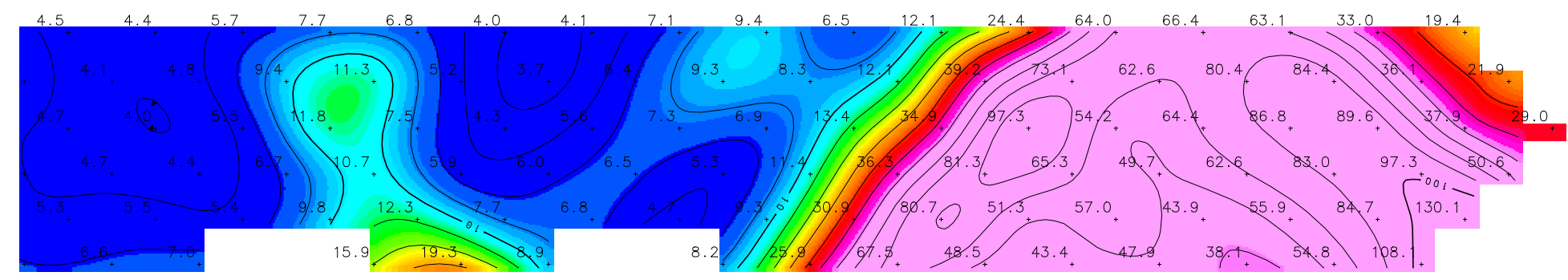
326000E 326200E 326400E 326600E 326800E 327000E 327200E 327400E 327600E 327800E 328000E 328200E 328400E 328600E 328800E 329000E 329200E 329400E

326000E 326200E 326400E 326600E 326800E 327000E 327200E 327400E 327600E 327800E 328000E 328200E 328400E 328600E 328800E 329000E 329200E 329400E

CULTURE PROFILE

APPARENT RESISTIVITY (ohm-m)

d = 0.40a  
d = 0.68a  
d = 0.95a  
d = 1.21a  
d = 1.47a  
d = 1.73a



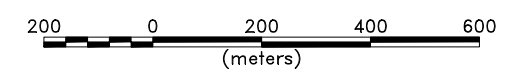
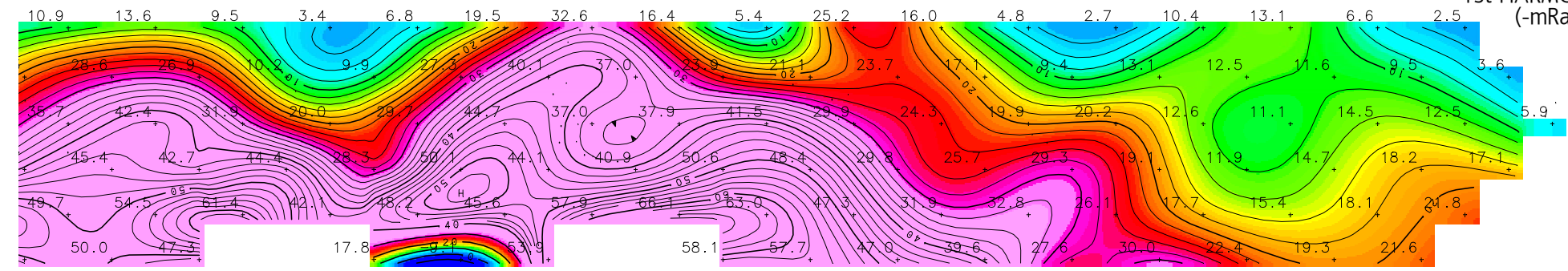
DIPOLE SIZE : 200.00 Meters  
SURVEY DATE : OCT94  
FREQUENCY : .125 hz  
CURRENT RANGE : 5.0 to 20.0 Amperes  
IP RECEIVER : GDP16 1029  
IP TRANSMITTER : GGT25 2019A  
SOFTWARE VERSION : CR 0521  
COST CODE : 4813  
CONTOUR INTERVALS,  
RESISTIVITY : Logarithmic (10 per cycle)  
PHASE : 2.00, 10.00

NOTE:  
EDWARD'S depth scale has been used with a vertical exaggeration of 2 for plotting.

326000E 326200E 326400E 326600E 326800E 327000E 327200E 327400E 327600E 327800E 328000E 328200E 328400E 328600E 328800E 329000E 329200E 329400E

1st HARMONIC PHASE (-mRadians)

d = 0.40a  
d = 0.68a  
d = 0.95a  
d = 1.21a  
d = 1.47a  
d = 1.73a



WESTERN MINING CORPORATION LIMITED EXPLORATION DIVISION		
<b>LAWN HILL PROJECT</b>		
DIPOLE DIPOLE INDUCED POLARIZATION POSEIDON NORTHEAST LINE 7030400 North		
DATE: 22/11/94	AUTHOR: HARRIS	PLAN NO.
SCALE: 1:10000	REF.	