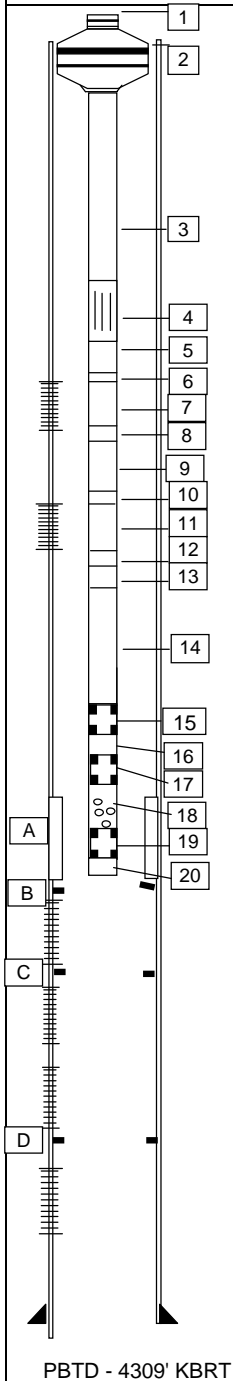


PETROLEUM ENGINEERING DEPARTMENT PROPOSED DOWNHOLE SINGLE GAS COMPLETION

WELL: Tardrum 1

DATE: 11/02/2002



ITEM NO.	DESCRIPTION	LENGTH (ft)	DEPTH RT (ft)	MIN. ID. (in)		
1	K.B. to top of tubinghead spool (to be confirmed)	13.51				
2	CIW FBB tubing hanger 7-1/16" x 2-3/8" EUE top & bottom, 2" BPV prep.	0.75	13.51			
3	79Jts Tubing, 2-3/8" 4.7# J55 EUE	2491.50	14.26	1.995		
4	2-3/8" Otis Sliding Sleeve 121XO w/ 2-3/8" EUE pin x pin & 1.875" X profile Closed.	2.85	2505.76	1.875		
5	1 Jt Tubing, 2-3/8" 4.7# J55 EUE	31.70	2508.61	1.995		
6	Xover 2-3/8" EUE box x 2-3/8" BH3 pin	1.04	2540.31	1.995		
7	3 Jts 2-3/8" BH3 J55 Blast Joints (20 ft length joints)	58.70	2541.35	1.995		
8	Xover 2-3/8" BH3 box x 2-3/8" EUE pin	0.70	2600.05	1.995		
9	7 Jts Tubing, 2-3/8" 4.7# J55 EUE	220.71	2600.75	1.995		
10	Pup Joint 2-3/8" 4.7# EUE J55 (6ft)	6.07	2821.46	1.995		
11	Xover 2-3/8" EUE box x 2-3/8" BH3 pin	1.03	2827.53	1.995		
12	2 Jts 2-3/8" BH3 J55 Blast Joints (20 ft length joints)	39.68	2828.56	1.995		
13	Xover 2-3/8" BH3 box x 2-3/8" EUE pin	0.81	2868.24	1.995		
14	21 Jt 2-3/8" 4.7# EUE J55	659.29	2869.05	1.995		
15	Landing Nipple, 2-3/8" Vitex 11X1, EUE	0.96	3528.34	1.875		
16	Pup Joint 2-3/8" 4.7# EUE J55 (6ft)	6.00	3529.30	1.995		
17	Landing Nipple, 2-3/8" Otis 11X18760-A, EUE	1.30	3535.30	1.875		
18	Perforated Pup Joint 2-3/8" 4.7# EUE J55 (6ft)	6.12	3536.60	1.995		
19	Landing Nipple, 2-3/8" Otis XN, EUE	1.39	3542.72	1.791		
20	Collar, 2-3/8" EUE	0.41	3544.11			
END OF TUBING				3544.52		
NOTE: Casing has partly collapsed at 2551'kb passed a 3.9" blind box through and unable to pass a 4.767 gauge ring through 7/12/01. Unable to get PLS packer with 4.675" OD through 6/12/01. Collars may hang up on 4" frac baffle when POOH with tubing.				1080.32	mRT	
A	4" ID Casing Patch 3033' to 3045' (924.66 - 928.21 mRT)					
B	4" frac baffle at 3443.41'					
C	3-7/8" frac baffle at 3710.47'					
D	3.5" frac baffle at 3953.25'					
Note: Surface casing has 152psi shut in pressure and flows water.						
Sliding sleeve Down to open.						
FORMATION	INTERVAL (m RT)	SIZE	TYPE	SPF	TYPE	WT(g)
Permian 1B Sandstone	779-790	3-1/2"	HSD	6	34B HJ II	21
Permian 1A Sandstone	865-870	3-1/2"	HSD	6	34B HJ II	21
C2 Lower B Coal Seam	1108.35-1111.90	2-1/2"	HSD	6	35B UP	10.5
C3 Coal Seam	1148.80-1151.80	2-1/2"	HSD	6	35B UP	10.5
C4 Coal Seam	1186.95-1189.33	2-1/2"	HSD	6	35B UP	10.5
C6 Coal Seam	1220.38-1225.08	2-1/2"	HSD	6	35B UP	10.5
REMARKS:						
ANNULUS FLUID: N/A						
INDICATED STRING WEIGHT: 17000lbs						
CALCULATED STRING WEIGHT: 17000lbs						
SLACK-OFF WEIGHT: 17000lbs						
OTHER:						
NOT TO SCALE		WELLSITE SUPERVISOR		I Fendley		
PROPOSED: YES		DATE OF INSTALLATION		8/12/2001		
RE-COMPLETION: No		DRAFTED: B Harradine		DATE:		11-February-02
COMPLETION: YES		REVISED:		DATE:		
OTHER:						

PBTD - 4309' KBRT