

**Company:** Beach Petroleum Pty. Ltd

**Well:** Kewarra-01

**Field:** Wildcat

**Rig:** Hunt #2

**Country:** Australia

**CST-GR**  
**Side Wall Cores**  
**Scale 1:200**

<b>LOCATION</b>					
Gidgee 3-D Seismic Survey		Elev.:	K.B.	116.8 m	
Inline 303 / Xline 245			G.L.	113 m	
			D.F.	116.8 m	
Permanent Datum:	AHD	Elev.:	0 m		
Log Measured From:	Rotary Table		116.8 m above Perm. Datum		
Drilling Measured From:	Rotary Table				
State: Queensland	Max. Well Deviation	Longitude	Latitude		
	1.5 deg	141°08'48.96"E	28°30'40.79S		

**Rig:** Hunt #2  
**Field:** Wildcat  
**Location:** Gidgee 3-D Seismic Survey  
**Well:** Kewarra-01  
**Company:** Beach Petroleum Pty. Ltd

Logging Date	10-Apr-2007		
Run Number	2		
Depth Driller	1630 m		
Schlumberger Depth	1631.2 m		
Bottom Log Interval	1611 m		
Top Log Interval	1183.5 m		
Casing Driller Size @ Depth	9.625 in @ 578.3 m		
Casing Schlumberger	577.3 m		
Bit Size	8.500 in		
Type Fluid In Hole	KCL Polymer		
Density	9.2 lbm/gal	38 s	
Fluid Loss	6.8 cm3	10	
Source Of Sample	Pit		
RM @ Measured Temperature	0.225 ohm.m	@	28 degC
RMF @ Measured Temperature	0.206 ohm.m	@	29 degC
RMC @ Measured Temperature	0.375 ohm.m	@	26 degC
Source RMF	RMC	Press	
RM @ MRT	0.095 @ 96	0.088 @ 96	
Maximum Recorded Temperatures	96 degC	96	
Circulation Stopped	9-Apr-2007	16:15	
Logger On Bottom	10-Apr-2007	11:23	
Unit Number	3170	AUMB	
Recorded By	Michael Morse / Ashraf Dandi		
Witnessed By	Doug Short		

Logging Date				Run 1	Run 2	R
Run Number						
Depth Driller						
Schlumberger Depth						
Bottom Log Interval						
Top Log Interval						
Casing Driller Size @ Depth						
Casing Schlumberger						
Bit Size						
Type Fluid In Hole						
Density						
Fluid Loss						
Source Of Sample						
RM @ Measured Temperature						
RMF @ Measured Temperature						
RMC @ Measured Temperature						
Source RMF						
RM @ MRT						
Maximum Recorded Temperatures						
Circulation Stopped						
Logger On Bottom						
Unit Number						
Recorded By						
Witnessed By						

Logging Date			
Run Number			
Depth Driller			
Schlumberger Depth			
Bottom Log Interval			
Top Log Interval			
Casing Driller Size @ Depth			
Casing Schlumberger			
Bit Size			
Type Fluid In Hole			
Density			
Fluid Loss			
Source Of Sample			
RM @ Measured Temperature			
RMF @ Measured Temperature			
RMC @ Measured Temperature			
Source RMF			
RM @ MRT			
Maximum Recorded Temperatures			
Circulation Stopped			
Logger On Bottom			
Unit Number			
Recorded By			
Witnessed By			

## DEPTH SUMMARY LISTING

Date Created: 13-APR-2007 9:48:05

### Depth System Equipment

Depth Measuring Device	Tension Device	Logging Cable
Type: IDW-B Serial Number: 4898 Calibration Date: 24-11-2006 Calibrator Serial Number: 1933 Calibration Cable Type: 7-42V-XS Wheel Correction 1: -6 Wheel Correction 2: -6	Type: CMTD-B/A Serial Number: 2251 Calibration Date: 01-04-2007 Calibrator Serial Number: 1050 Calibration Gain: 0.94 Calibration Offset: 784.00	Type: 7-42ZV-XS Serial Number: 6093 Length: 4675.94 M <hr/> Conveyance Method: Wireline Rig Type: LAND

### Depth Control Parameters

Log Sequence:	Subsequent Log In the Well
Reference Log Name:	HALS-BHC-PEX
Reference Log Run Number:	1
Reference Log Date:	10-Apr-2007

### Depth Control Remarks

1. Second Log In Well.
2. All Schlumberger Depth Control Procedures Followed.
3. IDW Primary Depth Control, Z-Chart Secondary Depth Control
- 4.
- 5.
- 6.

#### DISCLAIMER

THE USE OF AND RELIANCE UPON THIS RECORDED-DATA BY THE HEREIN NAMED COMPANY (AND ANY OF ITS AFFILIATES, PARTNERS, REPRESENTATIVES, AGENTS, CONSULTANTS AND EMPLOYEES) IS SUBJECT TO THE TERMS AND CONDITIONS AGREED UPON BETWEEN SCHLUMBERGER AND THE COMPANY, INCLUDING: (a) RESTRICTIONS ON USE OF THE RECORDED-DATA; (b) DISCLAIMERS AND WAIVERS OF WARRANTIES AND REPRESENTATIONS REGARDING COMPANY'S USE OF AND RELIANCE UPON THE RECORDED-DATA; AND (c) CUSTOMER'S FULL AND SOLE RESPONSIBILITY FOR ANY INFERENCE DRAWN OR DECISION MADE IN CONNECTION WITH THE USE OF THIS RECORDED-DATA.

OTHER SERVICES1 OS1: HALS-BHC-PEX OS2: CST-GR OS3: OS4: OS5:	OTHER SERVICES2 OS1: OS2: OS3: OS4: OS5:
---	---

REMARKS: RUN NUMBER 1 Tool String run as per tool sketch.	REMARKS: RUN NUMBER 2
--	-----------------------

- First Correlation pass 1625 - 1573m.
- Second Correlation pass 1475 - 1420m.
- Third Correlation pass 1220 - 1170m.
- 30 Shots were attempted, 30 bullets fired.

30 Cores recovered

Maximum recorded temperature is 95.6degC from Run 1.

Core Summary Sample depths shot at Required depths, presentation display issue

Mud Properties taken from Mud Report dated 9-Apr-2007

Chlorides = 20,000 mg/L

K+ =21,000 mg/L and KCL = 4(%by Wt.)

Circulation stopped @ 16:15 on 9-Apr-07.

RUN 1			RUN 2		
SERVICE ORDER #:	AUMB07356895		SERVICE ORDER #:		
PROGRAM VERSION:	14C0-302		PROGRAM VERSION:		
FLUID LEVEL:			FLUID LEVEL:		
LOGGED INTERVAL	START	STOP	LOGGED INTERVAL	START	STOP

## EQUIPMENT DESCRIPTION

RUN 1	RUN 2
-------	-------

**SURFACE EQUIPMENT**

SSTM-E 770

**DOWNHOLE EQUIPMENT**

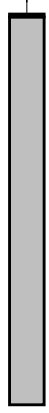
LEH-QT  
LEH-QT 1181



7.50

PGGT-D  
PGGC-DB 249  
PGGH-DA 252

Gamma Ray



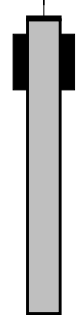
6.62

\_\_\_ 6.32

Casing Co

\_\_\_ 5.25

SSTC-C-W2  
SSTC-C 788



4.83

1.5 IN  
Standoff

CST-DA-W2  
CST-DA 776



3.48

1.5 IN  
Standoff

1.5 IN  
Standoff

Tension \_\_\_\_\_ 0.00  
TOOL ZERO

MAXIMUM STRING DIAMETER 7.50 IN  
MEASUREMENTS RELATIVE TO TOOL ZERO  
ALL LENGTHS IN METERS

Client: Beach Petroleum Ltd.

Well: Kewarra-01

Field: Wildcat

State: Queensland

Country: Australia

Drawing Date: 4/10/2007



Rig Name: Hunt Rig 2

Reference Datum: AHD

Elevation: 116.8 m

Production String	(in)		(m)	Well Schematic		(m)	(in)		Casing String
	OD	ID	MD			MD	OD	ID	
						0.0	12.250		Borehole Segment Casing String
						578.3	9.625		Casing Shoe
						581.0	12.250		Borehole Segment Bottom
						581.0	8.500		Borehole Segment



No.	Depth (M)	Depth (M)		Type	Type
1	0.0	1611.0	Recovered	Hard Rock	None
2	0.0	1605.0	Recovered	Combo	2
3	0.0	1593.0	Recovered	Combo	2
4	0.0	1589.0	Recovered	Combo	2
5	0.0	1580.0	Recovered	Combo	2.125
6	0.0	1568.8	Recovered	Combo	2
7	0.0	1552.5	Recovered	Combo	2
8	0.0	1549.0	Recovered	Combo	2
9	0.0	1546.0	Recovered	Combo	2.125
10	0.0	1545.0	Recovered	Combo	2
11	0.0	1530.0	Recovered	Combo	2
12	0.0	1527.0	Recovered	Combo	2
13	0.0	1507.0	Recovered	Combo	2
14	0.0	1504.0	Recovered	Combo	2
15	0.0	1502.0	Recovered	Combo	2
16	0.0	1500.5	Recovered	Combo	2.125
17	0.0	1499.5	Recovered	Combo	2.125
18	0.0	1467.0	Recovered	Combo	2
19	0.0	1465.5	Recovered	Combo	2
20	0.0	1463.5	Recovered	Combo	2
21	0.0	1461.5	Recovered	Combo	2
22	0.0	1461.0	Recovered	Combo	2
23	0.0	1460.0	Recovered	Combo	2
24	0.0	1457.0	Recovered	Combo	2
25	0.0	1456.0	Recovered	Combo	2
26	0.0	1454.5	Recovered	Combo	2
27	0.0	1198.5	Recovered	Combo	2.125
28	0.0	1192.5	Recovered	Combo	2.125
29	0.0	1190.5	Recovered	Combo	2
30	0.0	1183.5	Recovered	Combo	2.125

<b>% Recovered</b> 100	<b>Number Recovered</b> 30	<b>Number Attempted</b> 30
---------------------------	-------------------------------	-------------------------------

Company: Beach Petroleum Pty. Ltd

Well: Kewarra-01

**Input DLIS Files**

DEFAULT HALS\_SONIC\_TLD\_MCFL\_023PUP FN:33 PRODUCER 10-Apr-2007 04:20 1634.0 M 1040.4 M

**Output DLIS Files**

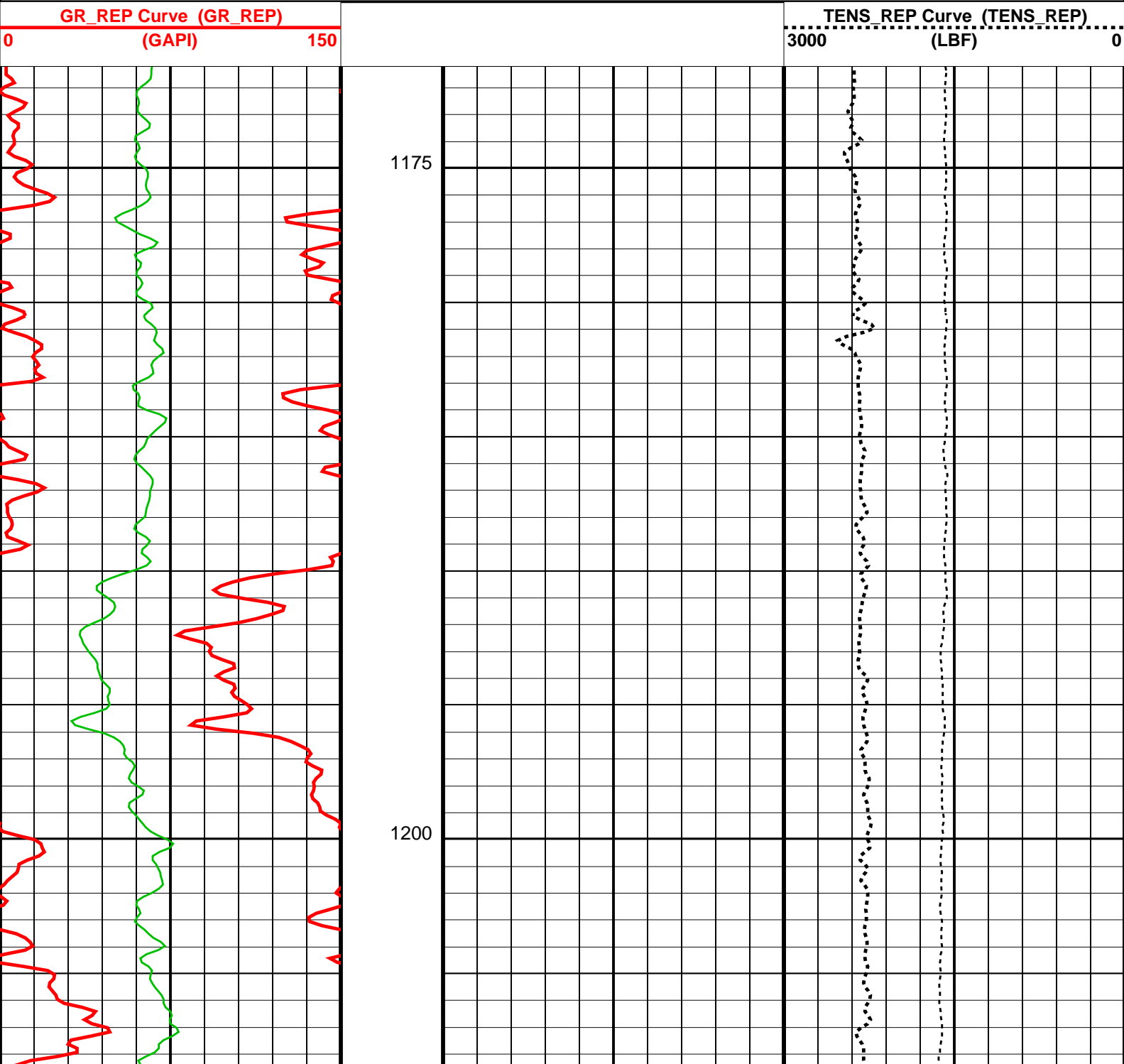
DEFAULT ST\_043LUP FN:56 PRODUCER 10-Apr-2007 12:45 1221.5 M 1171.2 M

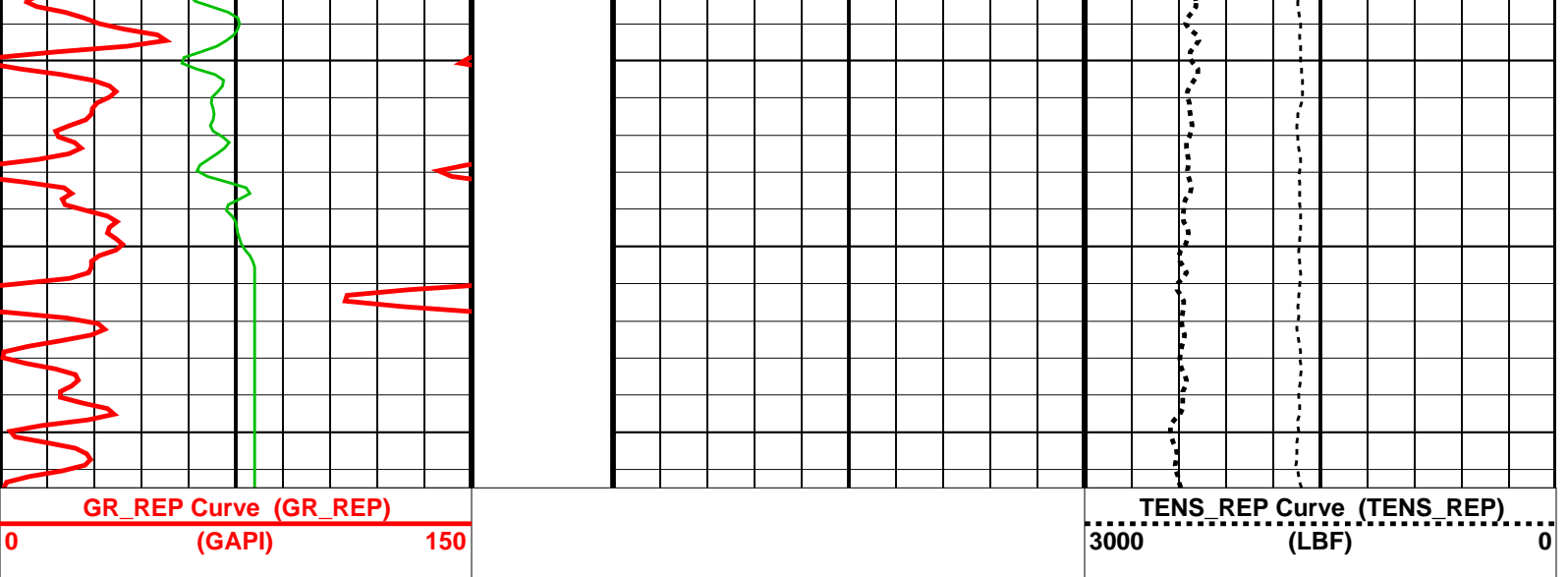
**OP System Version: 14C0-302**

MCM

CST-DA-W2 SRPC-3243-Q4\_2006  
PGGT-D SRPC-3243-Q4\_2006

SSTC-C-W2 SRPC-3243-Q4\_2006





Parameters		
DLIS Name	Description	Value
DORL	System and Miscellaneous Depth Offset for Repeat Analysis	0.0 M
Format: CORRELATION_REP    Vertical Scale: 1:200    Graphics File Created: 10-Apr-2007 12:46		

**OP System Version: 14C0-302**  
MCM

CST-DA-W2	SRPC-3243-Q4_2006	SSTC-C-W2	SRPC-3243-Q4_2006
PGGT-D	SRPC-3243-Q4_2006		

Input DLIS Files						
DEFAULT	HALS_SONIC_TLD_MCFL_023PUP	FN:33	PRODUCER	10-Apr-2007 04:20	1634.0 M	1040.4 M
Output DLIS Files						
DEFAULT	ST_043LUP	FN:56	PRODUCER	10-Apr-2007 12:45		



**Correlation Pass 2**

MAXIS Field Log

Company: Beach Petroleum Pty. Ltd Well: Kewarra-01

Input DLIS Files						
DEFAULT	HALS_SONIC_TLD_MCFL_023PUP	FN:33	PRODUCER	10-Apr-2007 04:20	1634.0 M	1040.4 M
Output DLIS Files						
DEFAULT	ST_041LUP	FN:54	PRODUCER	10-Apr-2007 12:01	1475.8 M	1419.5 M

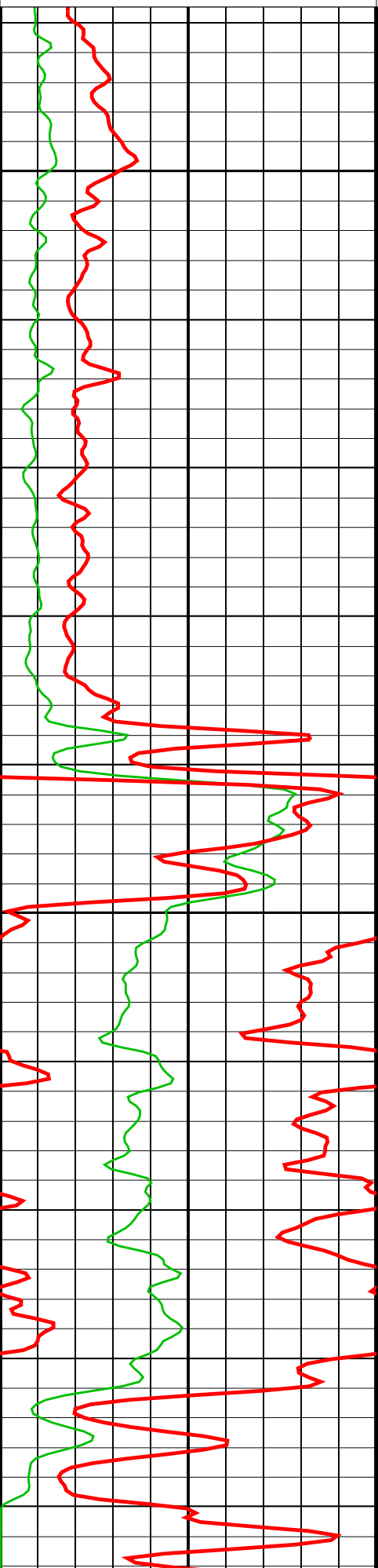
**OP System Version: 14C0-302**  
MCM

CST-DA-W2	SRPC-3243-Q4_2006	SSTC-C-W2	SRPC-3243-Q4_2006
-----------	-------------------	-----------	-------------------



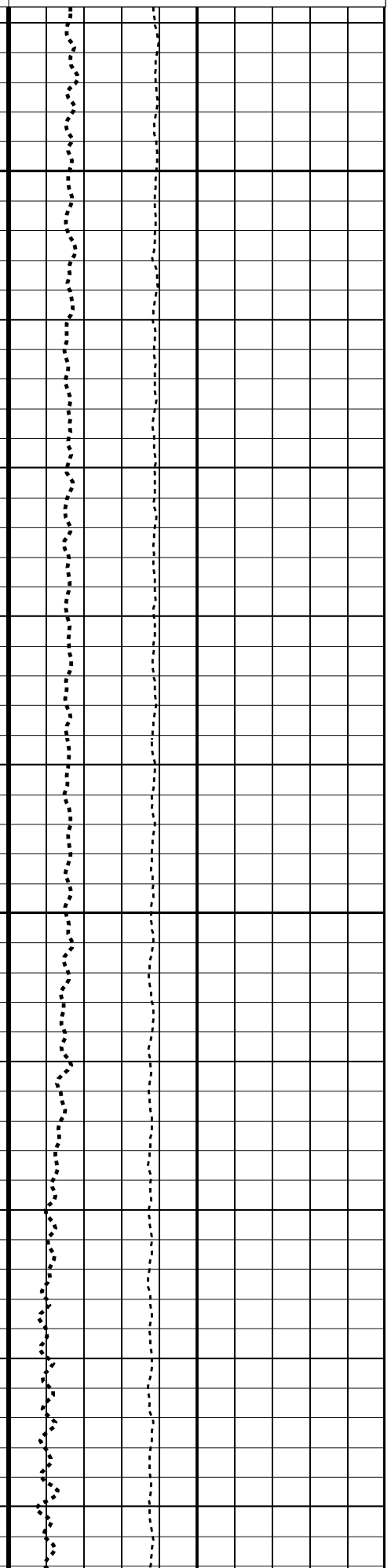
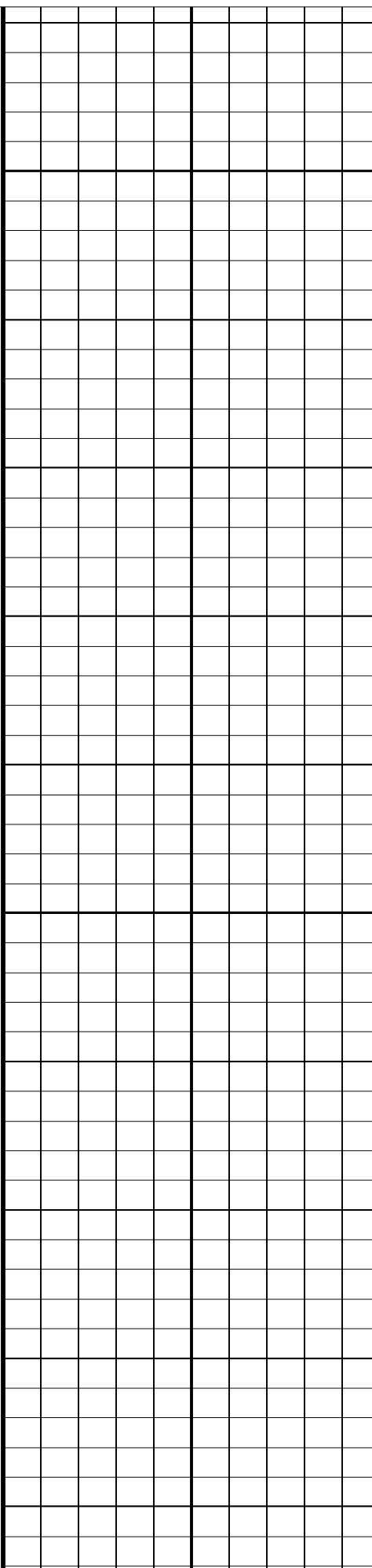
GR\_REP Curve (GR\_REP)  
(GAPI) 150

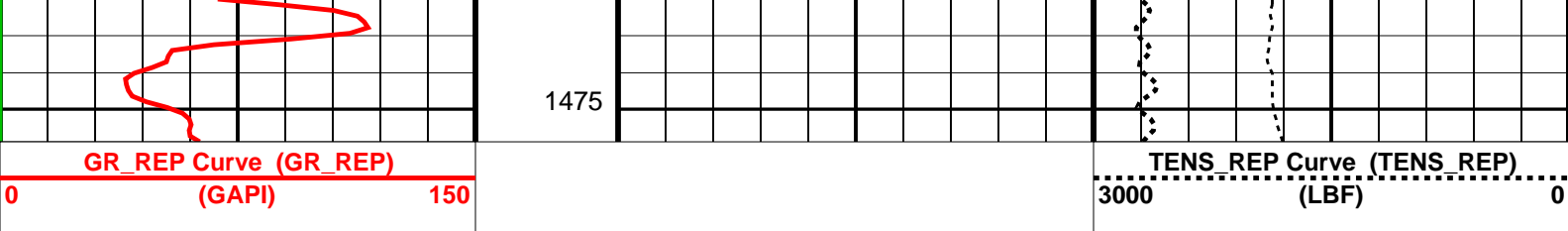
TENS\_REP Curve (TENS\_REP)  
(LBF) 3000 0



1425

1450





Parameters		
DLIS Name	Description	Value
DORL	System and Miscellaneous Depth Offset for Repeat Analysis	0.0 M
Format: CORRELATION_REP Vertical Scale: 1:200		Graphics File Created: 10-Apr-2007 12:01

**OP System Version: 14C0-302**  
MCM

CST-DA-W2	SRPC-3243-Q4_2006	SSTC-C-W2	SRPC-3243-Q4_2006
PGGT-D	SRPC-3243-Q4_2006		

Input DLIS Files						
DEFAULT	HALS_SONIC_TLD_MCFL_023PUP	FN:33	PRODUCER	10-Apr-2007 04:20	1634.0 M	1040.4 M
Output DLIS Files						
DEFAULT	ST_041LUP	FN:54	PRODUCER	10-Apr-2007 12:01		



## Correlation Pass 1

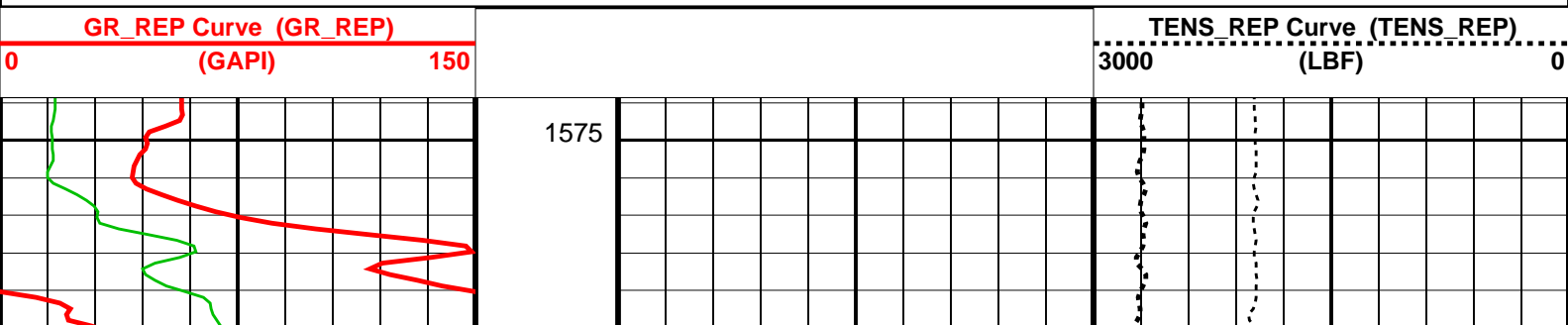
MAXIS Field Log

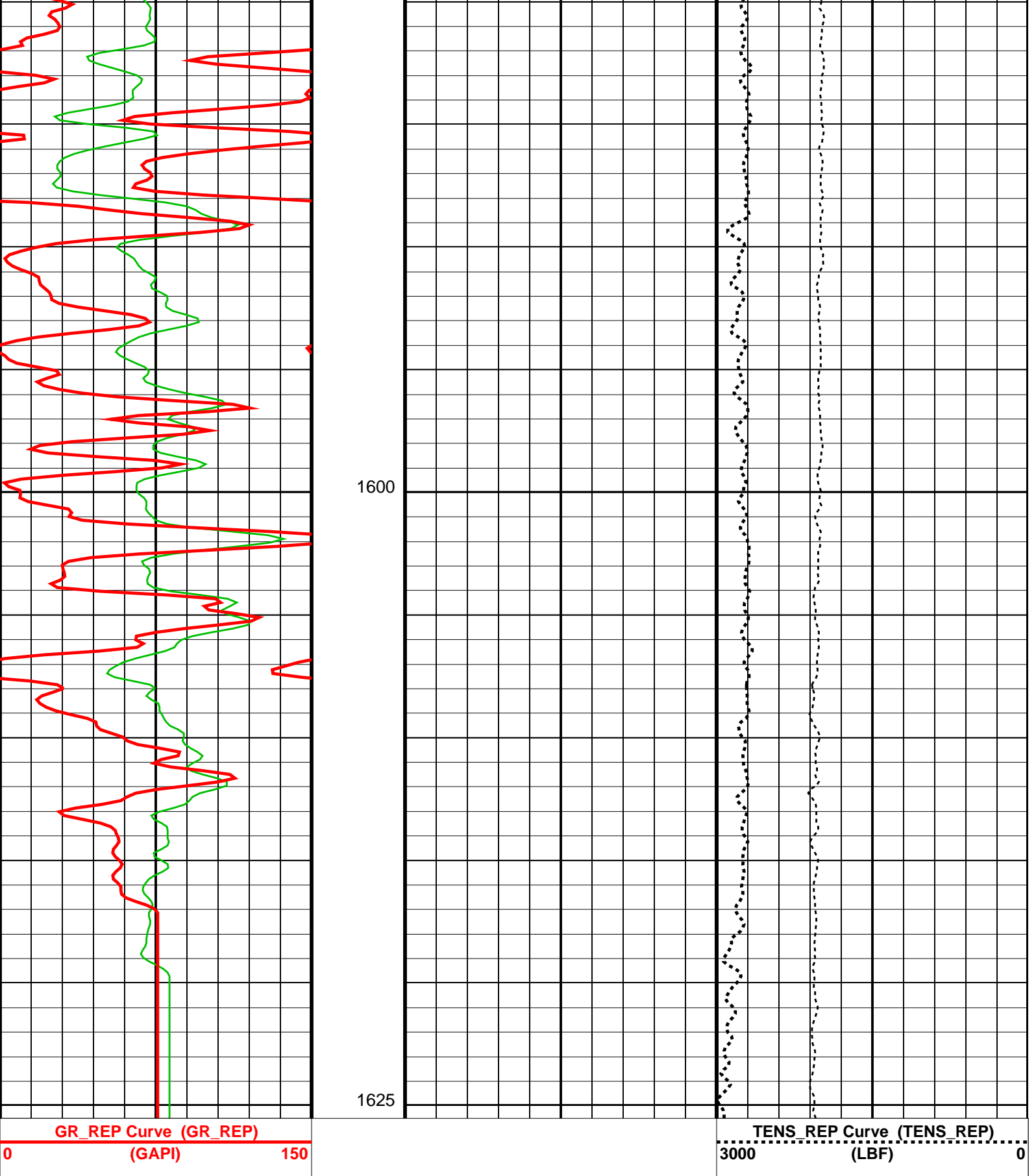
Company: Beach Petroleum Pty. Ltd Well: Kewarra-01

Input DLIS Files						
DEFAULT	HALS_SONIC_TLD_MCFL_023PUP	FN:33	PRODUCER	10-Apr-2007 04:20	1634.0 M	1040.4 M
Output DLIS Files						
DEFAULT	ST_037LUP	FN:50	PRODUCER	10-Apr-2007 11:23	1625.5 M	1573.8 M

**OP System Version: 14C0-302**  
MCM

CST-DA-W2	SRPC-3243-Q4_2006	SSTC-C-W2	SRPC-3243-Q4_2006
PGGT-D	SRPC-3243-Q4_2006		





Parameters		
DLIS Name	Description	Value
DORL	System and Miscellaneous Depth Offset for Repeat Analysis	0.0 M

Format: CORRELATION\_REP    Vertical Scale: 1:200    Graphics File Created: 10-Apr-2007 11:23

**Input DLIS Files**

DEFAULT	HALS_SONIC_TLD_MCFL_023PUP	FN:33	PRODUCER	10-Apr-2007 04:20	1634.0 M	1040.4 M
---------	----------------------------	-------	----------	-------------------	----------	----------

**Output DLIS Files**

DEFAULT	ST_037LUP	FN:50	PRODUCER	10-Apr-2007 11:23		
---------	-----------	-------	----------	-------------------	--	--

Company: **Beach Petroleum Pty. Ltd**

**Schlumberger**

Well: **Kewarra-01**

Field: **Wildcat**

Rig: **Hunt #2**

Country: **Australia**

CST-GR

Side Wall Cores

Scale 1:200