



28-03-2007

SURVEY @ 21m: 0.50°

WOB:0-4 klbs  
RPM:110-135  
SPP:50-150 psi  
FLOW:450-500 gpm

WOB:1-4 klbs  
RPM:110-135  
SPP:100-250 psi  
FLOW:450-500 gpm

WOB:4-10 klbs  
RPM:120-135  
SPP:450-700 psi  
FLOW:450-460 gpm

30

40

50

60

70

80

90

100

NO GAS

NO GAS

SANDSTONE:pl yel-yel,pl org,  
trnsf,f-med,mod-wl srtd,sbang-  
sbrnd,tr pl brn arg mtx,dom lse,  
gd inf por,no fluor.

SANDSTONE:pl yel-yel,pl org,trnsf,  
f-med,mod-wl srtd,sbang-sbrnd,  
tr lt brn arg mtx,dom lse,gd inf por,no  
fluor.

SANDSTONE:lt gry,off wh,trnsf,  
med-crs,mod-wl srtd,sbang-sbrnd,  
tr lt gry arg mtx,tr coal frags,dom  
lse,gd inf por,no fluor.

CLAYSTONE:pl grn-lt gry,occ med  
gry,sity,stky,sli calc,sft-frm,amrph-  
sbbky,occ disp.

CLAYSTONE:dk grnsh gry,pl grn,  
occ med gry,sity,stky,sli calc,v sft-  
sft,amorph-sbbky,occ disp.

MW:8.60 ppg  
FV:40  
PV:8  
YP:14  
Gel:6/9  
WL:N/C  
Sol:1.7  
pH:9.0  
Cl:2.7K  
Cake:1

29-03-2007

WOB:1-12 klbs  
RPM:120-140  
SPP:900-1100 psi  
FLOW:450-460 gpm

0	25	50
0	10	20
20	40	60

110  
120  
130  
140  
150  
160  
170  
180

10K

100K

10

100

100

1K

10K

NO GAS

CLAYSTONE:dk grnsh gry-pl grn,  
med gry i/p,occ slty,stky i/p,rr calc,  
disp-sft,amorph-sbblky.

CLAYSTONE:pl gry/grn,lt grn/gry  
i/p,occ yel/gry,mod slty,stky i/p,  
v sft-occ frm,amorph-sbblky.

0.0000

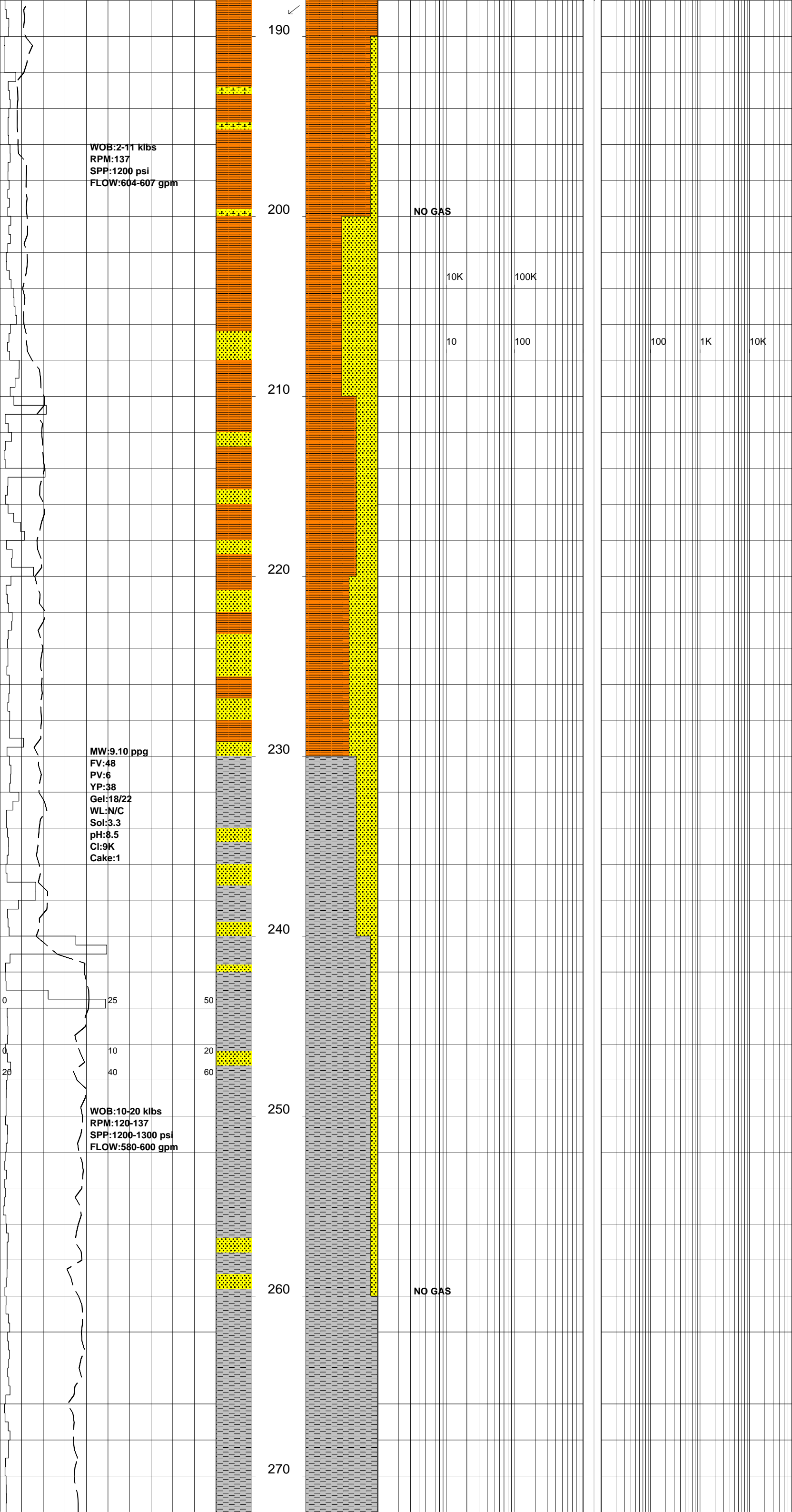
SANDSTONE:clr-trnsl,f-occ v crs, pred med,mod-pr srt,sbang-sbrnd,tr wk sil cmt,no vis mtx,mnr rd & grn liths,gen lse & cln,rr fri aggs,pr-fr inf por,pr vis por,no fluor.

CLAYSTONE:lt gry,pl brn,lt grn i/p, slty i/p,com micro carb spks,disp-occ v sft,amorph-sbblky i/p.

SILTSTONE:lt gry,pl brn,lt grn i/p, arg,com aren,com micro carb spks, sft-frm,amorph-sbblky i/p.

SANDSTONE:clr-trnsl,f-occ v crs, pred med,mod-pr srt,sbang-sbrnd, wk sil cmt,no vis mtx,mnr rd & grn liths,gen lse & cln,rr fri aggs,pr-fr inf por,pr vis por,no fluor.

SILTSTONE:lt gry,pl brn,lt grn i/p, arg,com aren,com micro carb spks, sft-frm,amorph-sbblky i/p.



WOB:2-11 klbs  
RPM:137  
SPP:1200 psi  
FLOW:604-607 gpm

NO GAS

10K

100K

10

100

100

1K

10K

MW:9.10 ppg  
FV:48  
PV:6  
YP:38  
Gel:18/22  
WL:N/C  
Sol:3.3  
pH:8.5  
Cl:9K  
Cake:1

230

SILTSTONE:lt gry,pl brn,lt grn i/p, arg,com aren,com micro carb spks, sft-frm,amorph-sbblky i/p.

240

SANDSTONE:clr-trnsl,f-occ v crs, pred med,mod-pr srt,sbang-sbrnd, wk sil cmt,no vis mtx,mnr rd & grn liths,gen lse & cln,rr fri aggs,pr-fr inf por,pr vis por,no fluor.

250

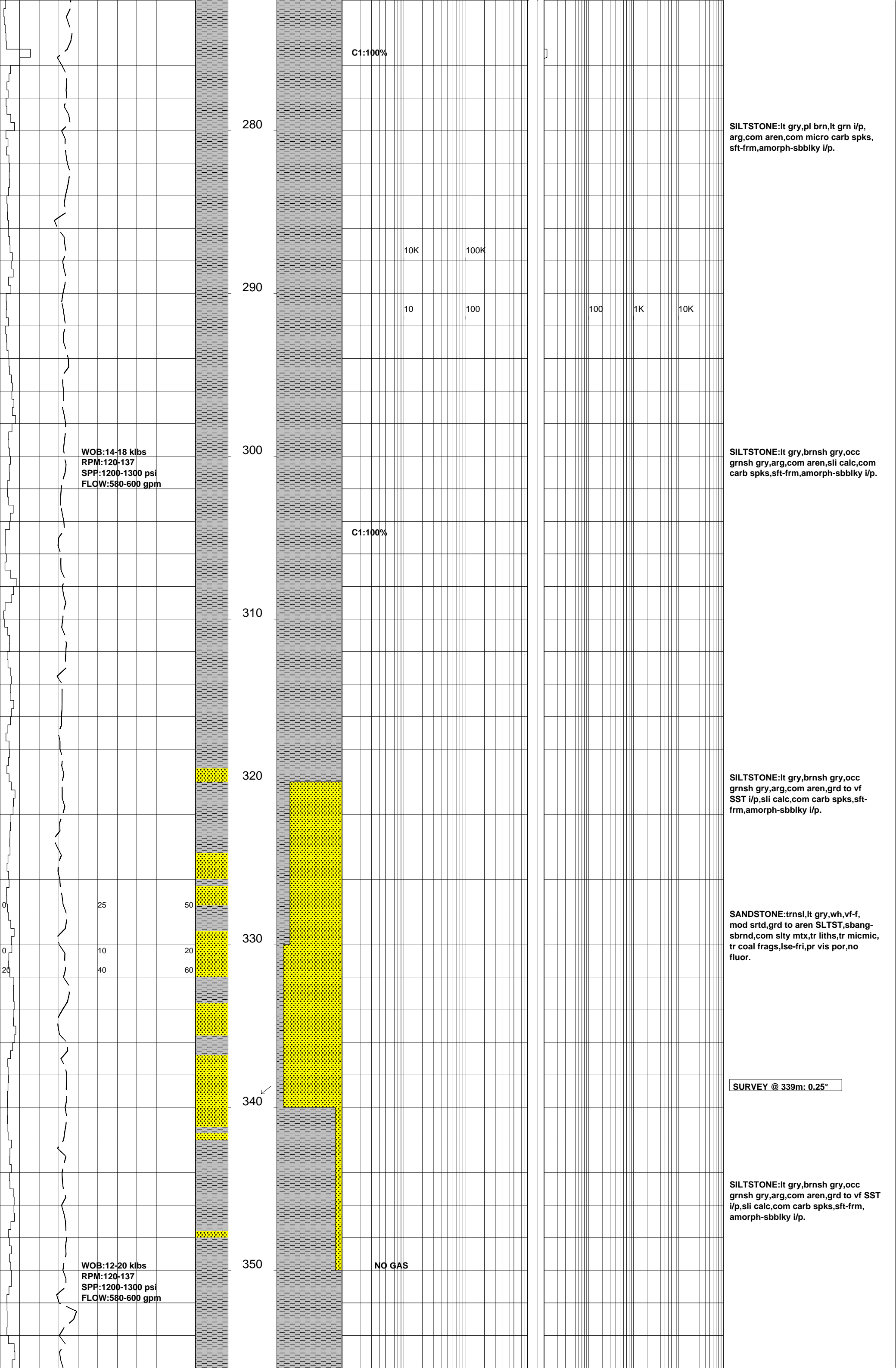
WOB:10-20 klbs  
RPM:120-137  
SPP:1200-1300 psi  
FLOW:580-600 gpm

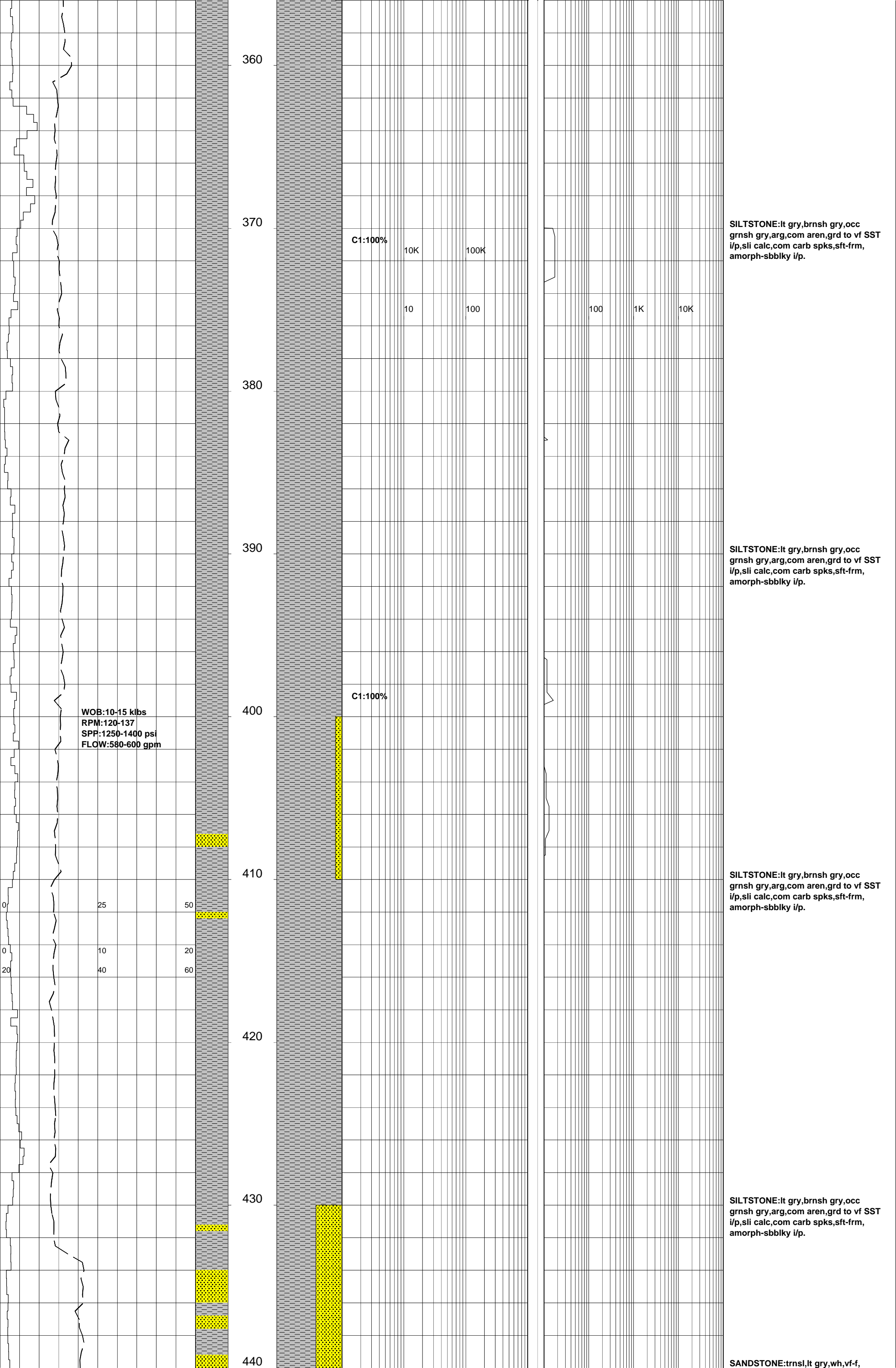
260

NO GAS

SILTSTONE:lt gry,pl brn,lt grn i/p, arg,com aren,com micro carb spks, sft-frm,amorph-sbblky i/p.

270





360

370

380

390

400

410

420

430

440

C1:100%

10K

100K

10

100

100

1K

10K

SILTSTONE:lt gry,brnsh gry,occ  
grnsh gry,arg,com aren,grd to vf SST  
i/p,sli calc,com carb spks,sft frm,  
amorph-sbblky i/p.

SILTSTONE:lt gry,brnsh gry,occ  
grnsh gry,arg,com aren,grd to vf SST  
i/p,sli calc,com carb spks,sft frm,  
amorph-sbblky i/p.

C1:100%

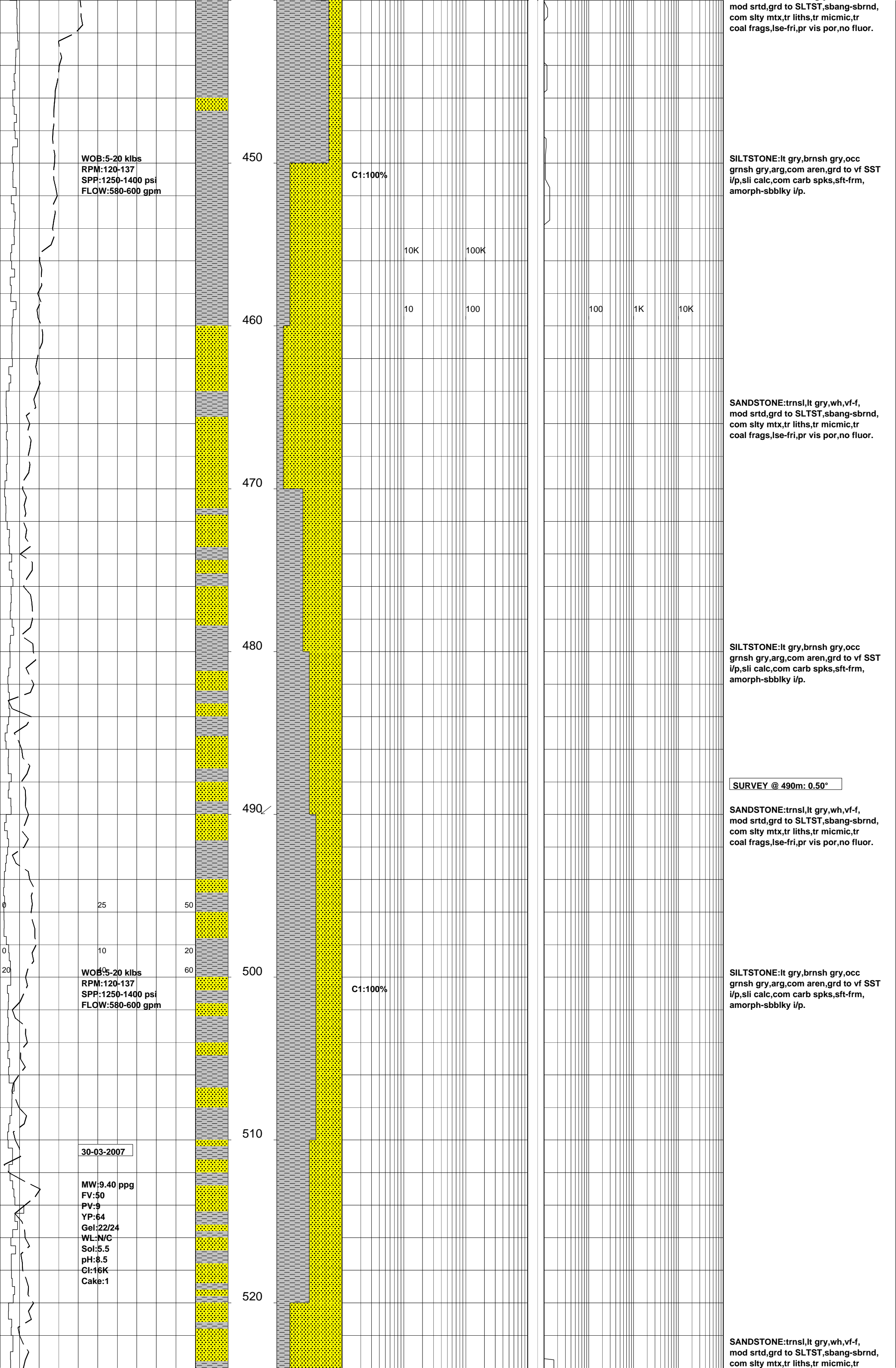
SILTSTONE:lt gry,brnsh gry,occ  
grnsh gry,arg,com aren,grd to vf SST  
i/p,sli calc,com carb spks,sft frm,  
amorph-sbblky i/p.

SILTSTONE:lt gry,brnsh gry,occ  
grnsh gry,arg,com aren,grd to vf SST  
i/p,sli calc,com carb spks,sft frm,  
amorph-sbblky i/p.

SANDSTONE:trnsl,lt gry,wh,vf-f,

WOB:10-15 klbs  
RPM:120-137  
SPP:1250-1400 psi  
FLOW:580-600 gpm

0 25 50  
0 10 20  
20 40 60



mod srt,grd to SLTST,sbang-sbrnd,  
com slty mt,lr liths,lr micmic,lr  
coal frags,lse-fri,pr vis por,no fluor.

**SILTSTONE:**lt gry,brnsh gry,occ  
grnsh gry,arg,com aren,grd to vf SST  
i/p,sli calc,com carb spks,sft frm,  
amorph-sbblky i/p.

**SANDSTONE:**trns,lt gry,wh,vf-f,  
mod srt,grd to SLTST,sbang-sbrnd,  
com slty mt,lr liths,lr micmic,lr  
coal frags,lse-fri,pr vis por,no fluor.

**SILTSTONE:**lt gry,brnsh gry,occ  
grnsh gry,arg,com aren,grd to vf SST  
i/p,sli calc,com carb spks,sft frm,  
amorph-sbblky i/p.

**SANDSTONE:**trns,lt gry,wh,vf-f,  
mod srt,grd to SLTST,sbang-sbrnd,  
com slty mt,lr liths,lr micmic,lr  
coal frags,lse-fri,pr vis por,no fluor.

**SILTSTONE:**lt gry,brnsh gry,occ  
grnsh gry,arg,com aren,grd to vf SST  
i/p,sli calc,com carb spks,sft frm,  
amorph-sbblky i/p.

**SANDSTONE:**trns,lt gry,wh,vf-f,  
mod srt,grd to SLTST,sbang-sbrnd,  
com slty mt,lr liths,lr micmic,lr

WOB:5-20 klbs  
RPM:120-137  
SPP:1250-1400 psi  
FLOW:580-600 gpm

C1:100%

10K 100K

10 100

100 1K 10K

SURVEY @ 490m: 0.50°

25 50  
10 20  
0 60  
20  
WOB:5-20 klbs  
RPM:120-137  
SPP:1250-1400 psi  
FLOW:580-600 gpm

C1:100%

30-03-2007

MW:9.40 ppg  
FV:50  
PV:9  
YP:64  
Gel:22/24  
WL:N/C  
Sol:5.5  
pH:8.5  
Cl:16K  
Cake:1

450

460

470

480

490

500

510

520

coal frags,lse-fri,pr vis por,no fluor.

Mackunda Fm:  
538.8m (-423.1m TVDSS)

SILTSTONE:lt gry,brnsh gry,occ  
grnsh gry,arg,com aren,grd to vf SST  
i/p,sli calc,com carb spks,sft frm,  
amorph-sbblky i/p.

SANDSTONE:clr,opq,lt gry,grn/gry,  
lt olv,f-vf,mod srted,sbang-sbrnd,  
calc cmt,sil mtx,dom lse-fri,gd vis  
por,fr inf por,no fluor.

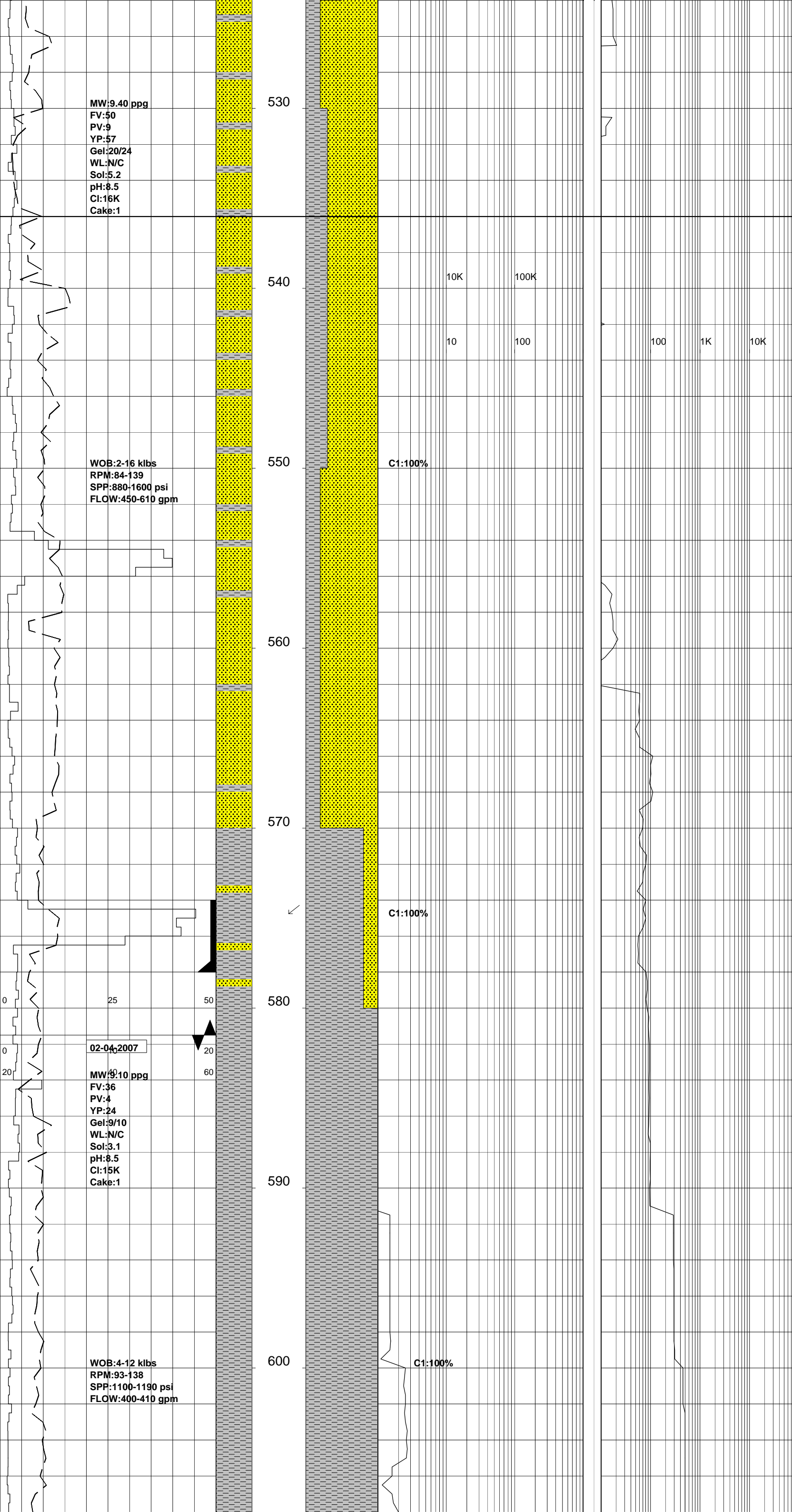
SILTSTONE:lt gry,brnsh gry,occ  
grnsh gry,arg,com aren,grd to vf SST  
i/p,sli calc,com carb spks,sft frm,  
amorph-sbblky i/p.

SURVEY @ 575m: 0.50°

9.625" CASING SHOE @ 578m

BIT #2: SECURITY EBX3CISC  
SIZE: 8.5" JETS: 3X13  
IN: 581m OUT: 1485m  
RUN: 904m HRS: 55.62  
COND: 5-5-WT-A-E-3-ER-TD

SILTSTONE:lt gry,arg,aren i/p,occ  
grd to vf SST,com carb spks,sft-  
frm,sbblky-sbfiss.



MW:9.40 ppg  
FV:50  
PV:9  
YP:57  
Gel:20/24  
WL:N/C  
Sol:5.2  
pH:8.5  
Cl:16K  
Cake:1

530  
540  
550  
560  
570  
580  
590  
600

WOB:2-16 klbs  
RPM:84-139  
SPP:880-1600 psi  
FLOW:450-610 gpm

02-04-2007  
MW:9.10 ppg  
FV:36  
PV:4  
YP:24  
Gel:9/10  
WL:N/C  
Sol:3.1  
pH:8.5  
Cl:15K  
Cake:1

WOB:4-12 klbs  
RPM:93-138  
SPP:1100-1190 psi  
FLOW:400-410 gpm

10K 100K

10 100

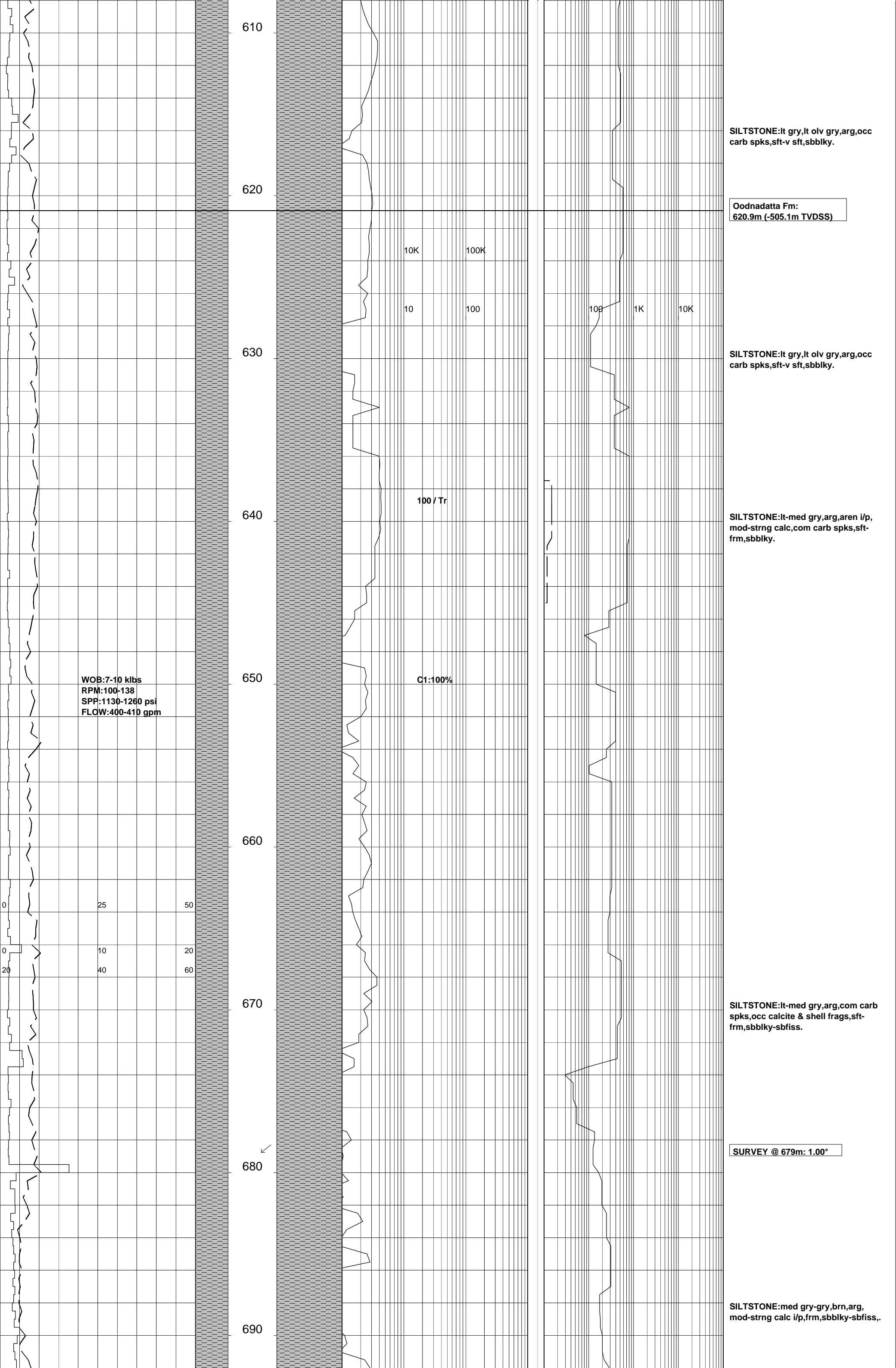
100 1K 10K

C1:100%

C1:100%

C1:100%





610

SILTSTONE:lt gry,lt olv gry,arg,occ carb spks,sft-v sft,sbblky.

620

Oodnadatta Fm:  
620.9m (-505.1m TVDSS)

10K 100K

10 100

100 1K 10K

630

SILTSTONE:lt gry,lt olv gry,arg,occ carb spks,sft-v sft,sbblky.

640

100 / Tr

SILTSTONE:lt-med gry,arg,aren i/p, mod-strng calc,com carb spks,sft-frn,sbblky.

650

WOB:7-10 klbs  
RPM:100-138  
SPP:1130-1260 psi  
FLOW:400-410 gpm

C1:100%

660

0 25 50  
0 10 20  
20 40 60

670

SILTSTONE:lt-med gry,arg,com carb spks,occ calcite & shell frags,sft-frn,sbblky-sbfiss.

680

SURVEY @ 679m: 1.00°

690

SILTSTONE:med gry-gry,brn,arg, mod-strng calc i/p,frn,sbblky-sbfiss,.

WOB:5-10 klbs  
RPM:120-138  
SPP:1330-1450 psi  
FLOW:400-410 gpm

700

98 / 2

C1:100%

10K

100K

710

10

100

100

1K

10K

SILTSTONE:lt-med gry,arg,mnr calc, com carb spks,occ calcite & shell frags,sft-frm,sbblky-sbfiss.

720

98 / 2

C1:100%

SILTSTONE:med-dk gry,arg,grd to CLYST,mnr calc,com carb spks,occ calcite & shell frags,sft-frm,sbblky-sbfiss.

730

98 / 2

SILTSTONE:lt-med gry,dk gry-grysh brn,arg,mnr calc,com carb spks,occ calcite & shell frags,sft-frm,sbblky-sbfiss.

740

98 / 2

0

25

50

750

WOB:5-12 klbs  
RPM:135-145  
SPP:1250-1450 psi  
FLOW:400-410 gpm

0

20

20

60

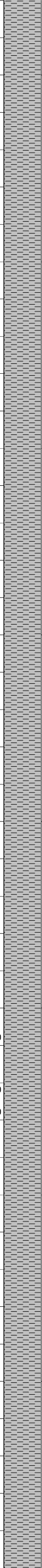
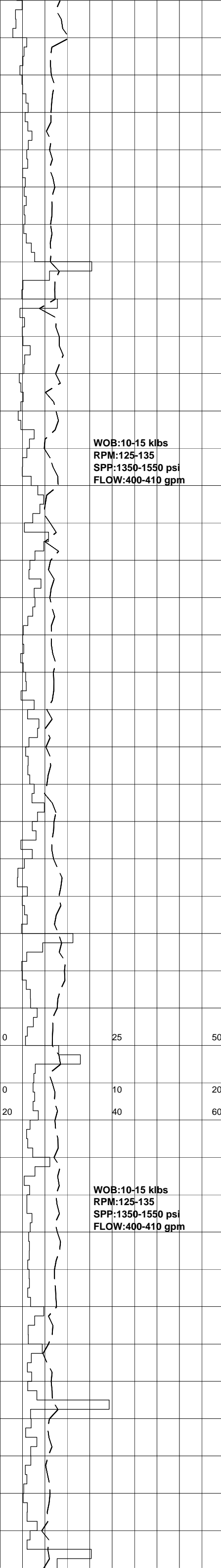
SILTSTONE:med-dk gry,dk gry-grysh brn,arg,mnr calc,com carb spks,occ calcite & shell frags,sft-frm,sbblky-sbfiss.

760

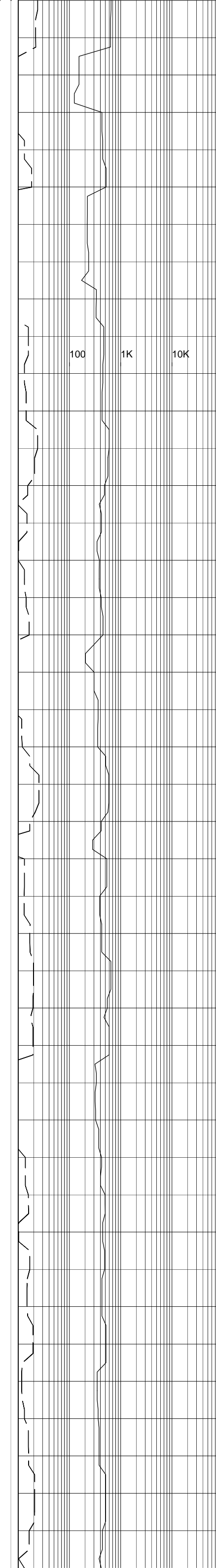
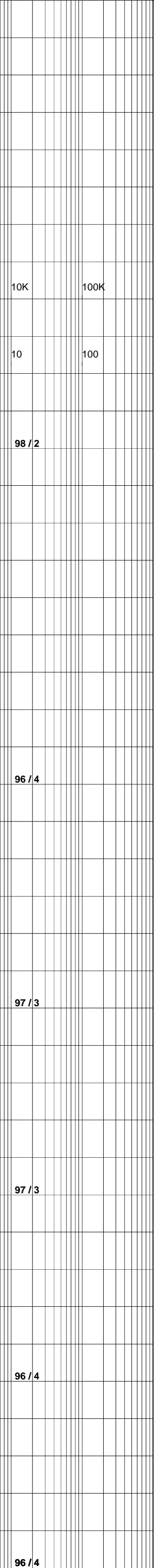
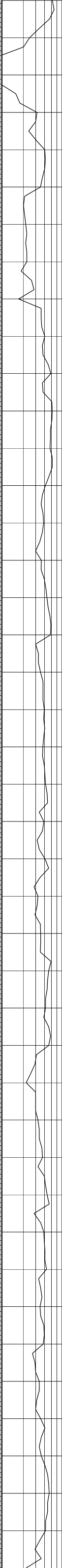
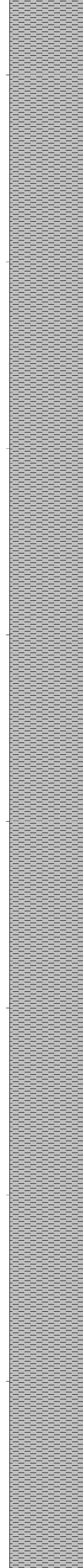
770

98 / 2

SILTSTONE:med-dk gry,dk gry-grysh brn,arg,mnr calc,com carb spks,occ calcite & shell frags,sft-frm,sbblky-sbfiss.



780  
790  
800  
810  
820  
830  
840  
850  
860



calcite & shell frags, sft-frm, sbbkly-sbfiss.

SILTSTONE: med-dk gry, dk gry-grysh brn, arg, mnr calc, com carb spks, occ calcite & shell frags, sft-frm, sbbkly-sbfiss.

SILTSTONE: med-dk gry, dk gry-grysh brn, arg, mnr calc, com carb spks, occ calcite & shell frags, sft-frm, sbbkly-sbfiss.

SILTSTONE: med-dk gry, dk gry-grysh brn, arg, mnr calc, com carb spks, occ calcite, sft-frm, sbbkly.

SILTSTONE: med-dk gry, dk gry-grysh  
brn, arg, mnr calc, com carb spks, occ  
calcite, sft-frm, sbblky.

SILTSTONE: lt gry, v lt gry, med gry,  
brnsh gry, arg, calc, occ carb spks,  
tr pyr, sft, sbblky.

SILTSTONE: lt gry, v lt gry, med gry,  
brnsh gry, arg, calc, occ carb spks,  
tr pyr, sft, sbblky.

SURVEY @ 926m: 0.50°

SILTSTONE: lt gry, v lt gry, med gry,  
brnsh gry, arg, calc i/p, occ carb spks,  
tr pyr, tr glauc, sft, sbblky.

03-04-2007

MW: 8.80 ppg  
FV: 34  
PV: 8  
YP: 9  
Gel: 25/17  
WL: N/C  
Sol: 2.0  
pH: 10.0  
Cl: 21K  
Cake: 1

WOB: 8-12 klbs  
RPM: 95-131  
SPP: 1390-1516 psi  
FLOW: 400-425 gpm

870

880

890

900

910

920

930

940

10K 100K

10 100  
94 / 4 / 2

95 / 3 / 2

95 / 4 / 1

98 / 1 / 1

98 / 2

98 / 2

C1 100%

100 1K 10K

0

25

50

0

10

20

20

40

60



WOB:10-20 klbs  
RPM:125-131  
SPP:1500-1600 psi  
FLOW:400-425 gpm

950

C1 100%

960

10K C1 100% 100K

10 100 100 1K 10K

SANDSTONE:wh-pl gry,vf,wl srtd, sbang,calc cmt,slty mtx,mod abndt glauc,tr felds,tr mica,fri-mod hd,v pr vis por,no fluor.

Coorikiana Sst:  
963.0m (-847.3m TVDSS)

970

97 / 3

Bulldog Shale:  
970.0m (-854.3m TVDSS)

SILTSTONE:lt gry,v lt gry,med gry, brnsh gry,arg,calc i/p,occ carb spks, tr pyr,tr glauc,sft,sbblky.

980

96 / 4

SANDSTONE:wh-pl gry,vf,wl srtd, sbang,calc cmt,slty mtx,mod abndt glauc,tr felds,tr mica,fri-mod hd,v pr vis por,no fluor.

990

92 / 5 / 3

SILTSTONE:lt gry,v lt gry,med gry, brnsh gry,arg,calc i/p,occ carb spks, tr pyr,tr glauc,sft,sbblky.

1000

91 / 5 / 4

WOB:15-20 klbs  
RPM:125-129  
SPP:1370-1570 psi  
FLOW:386-390 gpm

MW:9.00 ppg  
FV:38  
PV:9  
YP:7  
Gel:1/1  
WL:6.8  
Sol:3.4  
pH:10.0  
Cl:19K  
Cake:1

1010

92 / 5 / 3

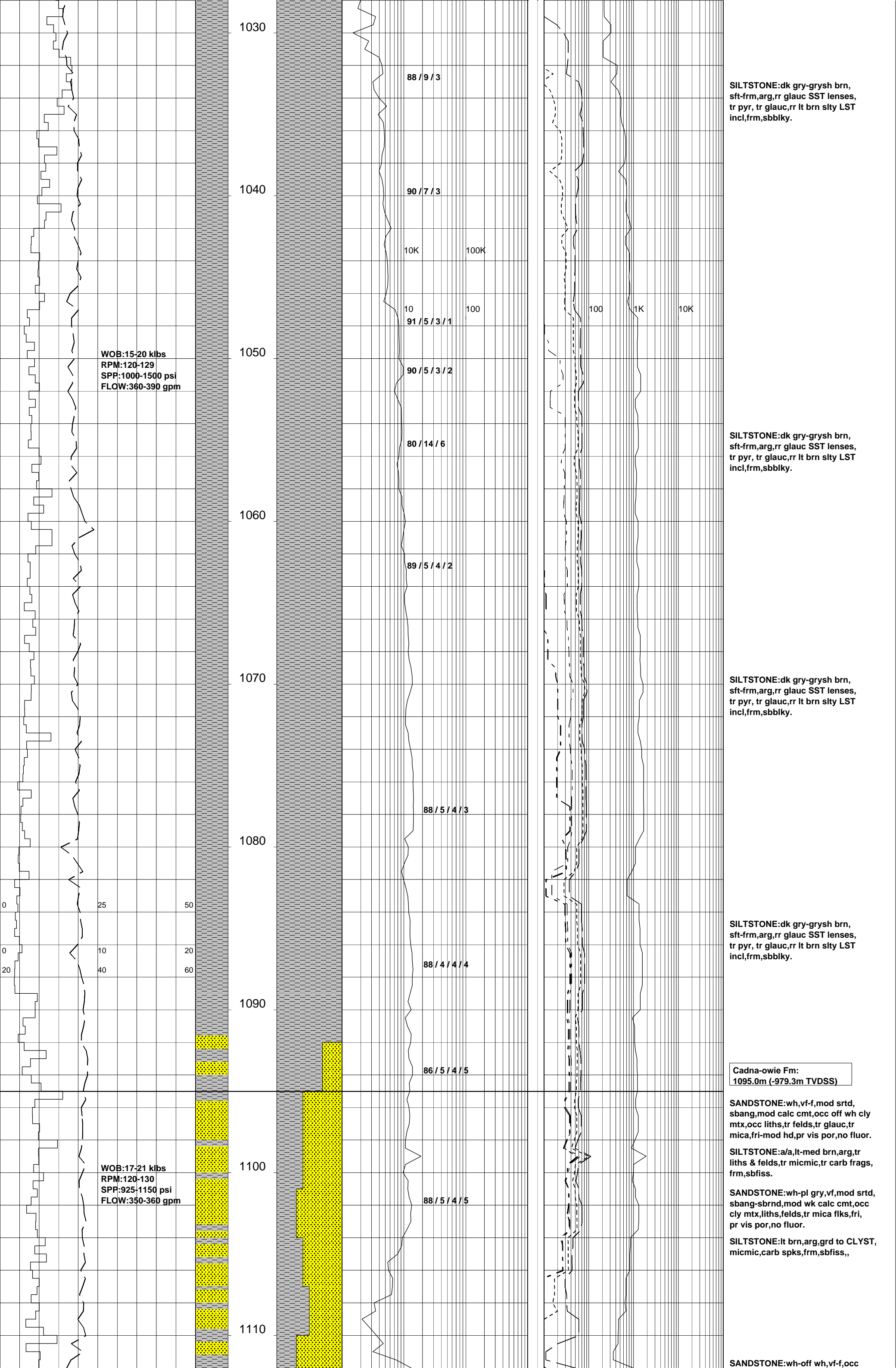
SILTSTONE:med gry,med-dk gry, grysh brn,arg,calc i/p,carb spks, tr pyr, tr glauc,sft,sbblky.

1020

84 / 12 / 4

88 / 9 / 3

CARBIDE LAG CHECK @ 1022m  
Theor. Stks:1400  
Actual Stks:1400  
O.Hole O.G.:0%  
Avg Hole Dia:8.5"  
TG Unit:178



WOB:15-20 klbs  
 RPM:120-129  
 SPP:1000-1500 psi  
 FLOW:360-390 gpm

WOB:17-21 klbs  
 RPM:120-130  
 SPP:925-1150 psi  
 FLOW:350-360 gpm

SILTSTONE:dk gry-grysh brn, sft-frm,arg,rr glauc SST lenses, tr pyr, tr glauc,rr lt brn slty LST incl,frm,sbblky.

SILTSTONE:dk gry-grysh brn, sft-frm,arg,rr glauc SST lenses, tr pyr, tr glauc,rr lt brn slty LST incl,frm,sbblky.

SILTSTONE:dk gry-grysh brn, sft-frm,arg,rr glauc SST lenses, tr pyr, tr glauc,rr lt brn slty LST incl,frm,sbblky.

SILTSTONE:dk gry-grysh brn, sft-frm,arg,rr glauc SST lenses, tr pyr, tr glauc,rr lt brn slty LST incl,frm,sbblky.

Cadna-owie Fm:  
 1095.0m (-979.3m TVDSS)

SANDSTONE:wh,vf-f,mod srtd, sbang,mod calc cmt,occ off wh cly mtx,occ liths,tr felds,tr glauc, tr mica,fri-mod hd,pr vis por,no fluor.

SILTSTONE:a/a,lt-med brn,arg,tr liths & felds,tr micmic,tr carb frags, frm,sbfiss.

SANDSTONE:wh-pl gry,vf,mod srtd, sbang-sbrnd,mod wk calc cmt,occ cly mtx,liths,felds,tr mica flks,fri, pr vis por,no fluor.

SILTSTONE:lt brn,arg,grd to CLYST, micmic,carb spks,frm,sbfiss,,

SANDSTONE:wh-off wh,vf-f,occ

88 / 9 / 3

90 / 7 / 3

10K

100K

10

100

91 / 5 / 3 / 1

90 / 5 / 3 / 2

80 / 14 / 6

89 / 5 / 4 / 2

88 / 5 / 4 / 3

88 / 4 / 4 / 4

86 / 5 / 4 / 5

88 / 5 / 4 / 5

1030

1040

1050

1060

1070

1080

1090

1100

1110

0

25

50

0

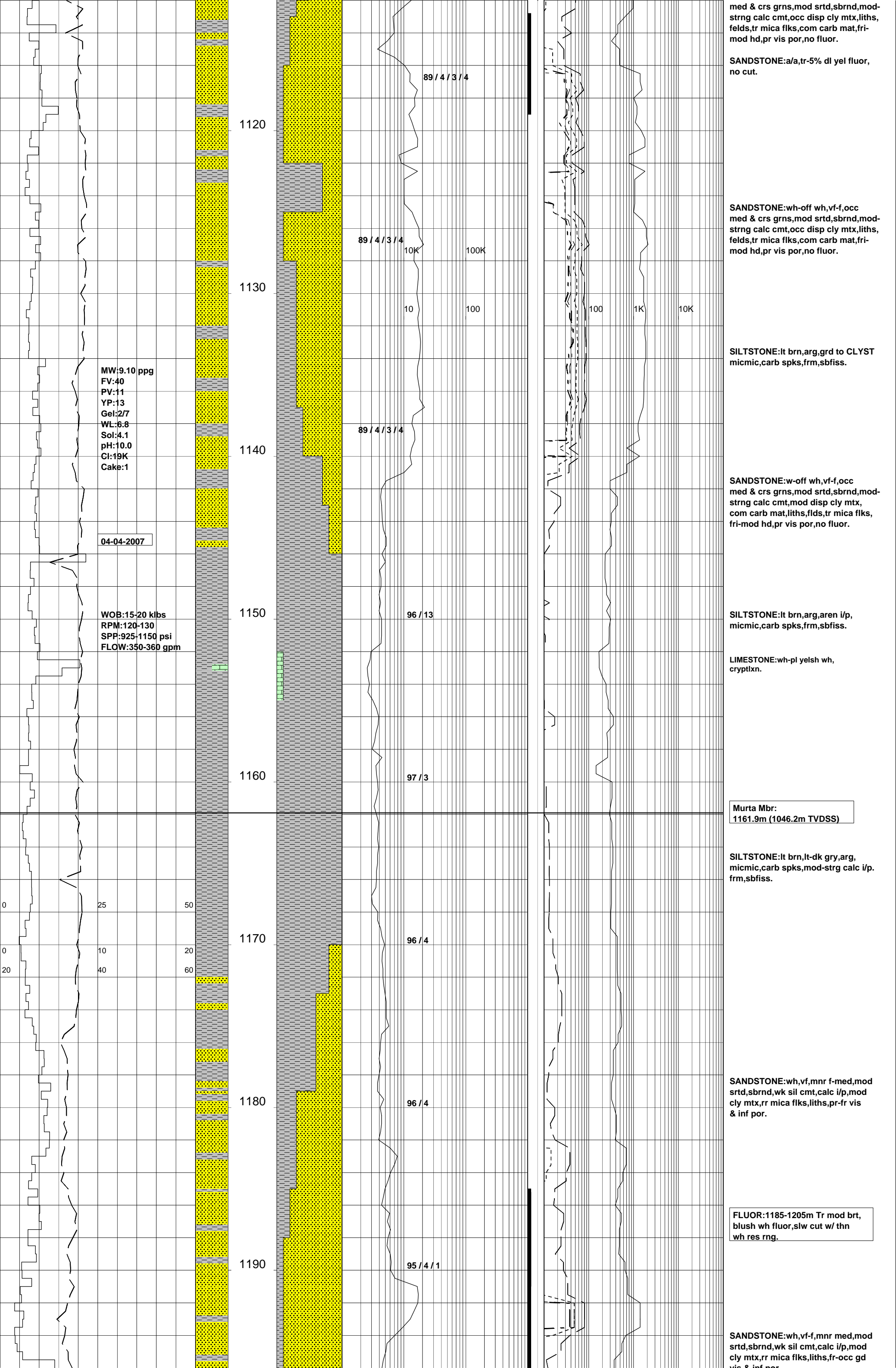
10

20

20

40

60



MW:9.10 ppg  
 FV:40  
 PV:11  
 YP:13  
 Gel:2.7  
 WL:6.8  
 Sol:4.1  
 pH:10.0  
 Cl:19K  
 Cake:1

04-04-2007

WOB:15-20 klbs  
 RPM:120-130  
 SPP:925-1150 psi  
 FLOW:350-360 gpm

89 / 4 / 3 / 4

89 / 4 / 3 / 4

89 / 4 / 3 / 4

96 / 13

97 / 3

96 / 4

96 / 4

95 / 4 / 1

med & crs grns,mod srtd,sbrnd,mod-strng calc cmt,occ disp cly mtx,liths,felds,tr mica flks,com carb mat,fri-mod hd,pr vis por,no fluor.

SANDSTONE:a/a,tr-5% dl yel fluor, no cut.

SANDSTONE:wh-off wh,vf-f,occ med & crs grns,mod srtd,sbrnd,mod-strng calc cmt,occ disp cly mtx,liths,felds,tr mica flks,com carb mat,fri-mod hd,pr vis por,no fluor.

SILTSTONE:lt brn,arg,grd to CLYST micmic,carb spks,frm,sbfiss.

SANDSTONE:w-off wh,vf-f,occ med & crs grns,mod srtd,sbrnd,mod-strng calc cmt,mod disp cly mtx,com carb mat,liths,flds,tr mica flks,fri-mod hd,pr vis por,no fluor.

SILTSTONE:lt brn,arg,aren i/p, micmic,carb spks,frm,sbfiss.

LIMESTONE:wh-pl yelsh wh, cryptltn.

Murta Mbr:  
 1161.9m (1046.2m TVDSS)

SILTSTONE:lt brn,lt-dk gry,arg, micmic,carb spks,mod-strg calc i/p, frm,sbfiss.

SANDSTONE:wh,vf,mnr f-med,mod srtd,sbrnd,wk sil cmt,calc i/p,mod cly mtx,rr mica flks,liths,pr-fr vis & inf por.

FLUOR:1185-1205m Tr mod brt, blush wh fluor,slw cut w/ thn wh res rng.

SANDSTONE:wh,vf-f,mnr med,mod srtd,sbrnd,wk sil cmt,calc i/p,mod cly mtx,rr mica flks,liths,fr-occ gd vis & inf por.

WOB:15-20 klbs  
RPM:125-130  
SPP:900-960 psi  
FLOW:350-380 gpm

1200

96 / 4

1210

94 / 4 / 2

10K

100K

10

100

100

1K

10K

1220

95 / 4 / 1

SURVEY @ 1219m: 1.50°

1230

95 / 5

Namur Sst:  
1230.3m (-1114.6m TVDSS)

1240

98 / 2

SANDSTONE:clr-trnsl,pred med-crs,  
mod-wl srtld,sbrnd,tr qtz ovghts,tr  
mica,lse,gd inf por,no fluor.

SANDSTONE:a/a,pred med-crs,  
mod-wl srtld,sbrnd,tr qtz ovghts,  
tr mica flks,lse,gd vis por,no fluor.

1250

98 / 2

SANDSTONE:wh-off wh,vf-f,mod  
srtld,sbang-sbrnd,wk-mod sil cmt,  
mod wh cly mtx,fri-mod hd,abdnt lse  
qtz grns,fr-gd por,no fluor.

SILTSTONE:med gry-grysh brn,  
lt brn,arg,carb,frm,sbfiss.

SILTSTONE:lt-dk brn,med-dk gry,  
micmic,carb spks,liths & qtz grns  
i/p,frm,sbfiss.

WOB:12-20 klbs  
RPM:120-130  
SPP:900-1000 psi  
FLOW:345-360 gpm

50

20

60

1260

SANDSTONE:clr-trnsl,vf-med,occ  
crs,mod srtld,sbang-sbrnd,mod disp  
cly mtx,lse,fr-gd vis & inf por,no  
fluor.

SANDSTONE:clr-trnsl,med-v crs,  
sbrnd,mod-wl srtld,sbang-sbrnd,tr  
qtz ovghts & xls faces,lse,gd vis  
& inf por,no fluor.

1270

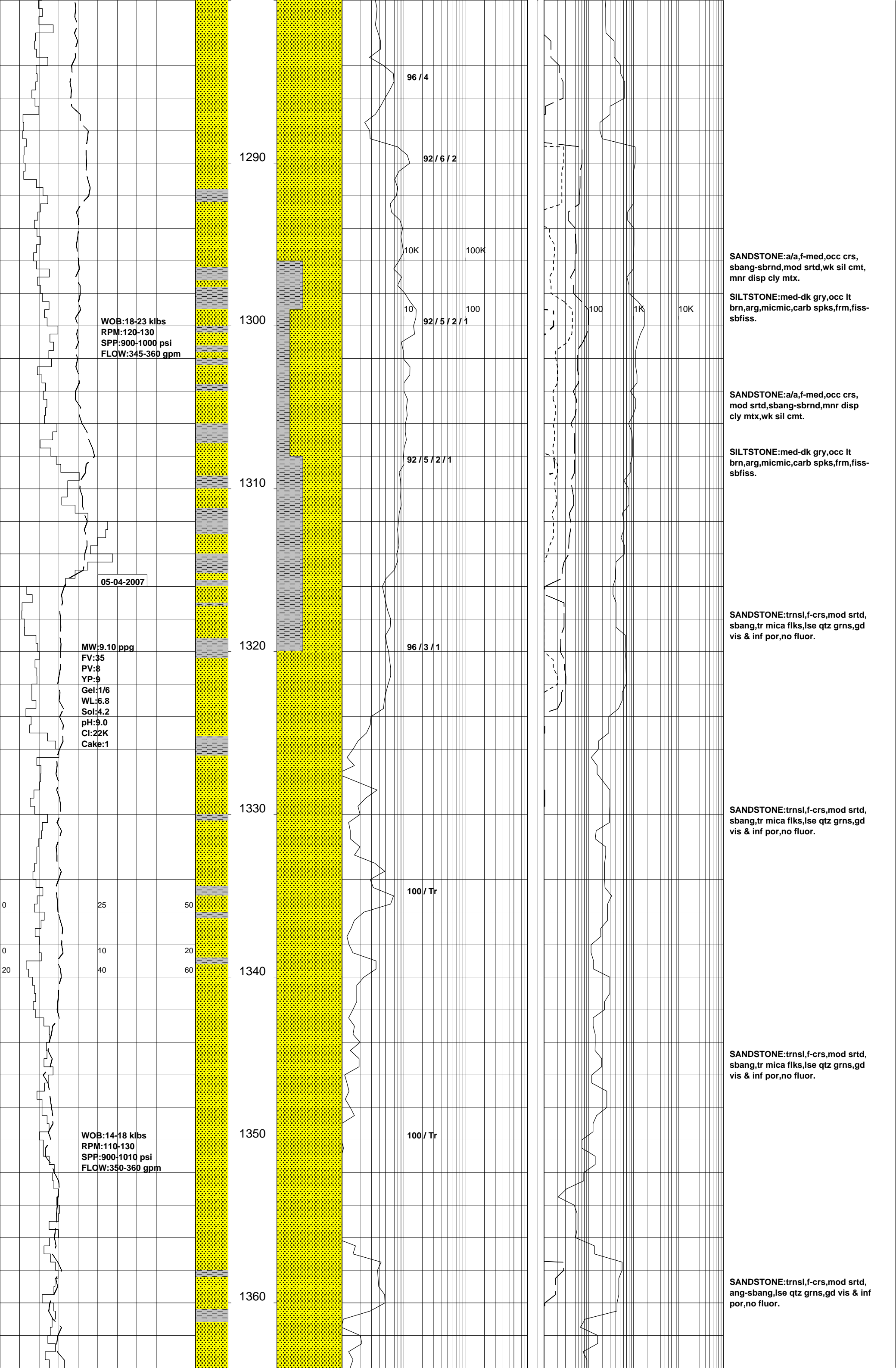
98 / 2

MW:9.20 ppg  
FV:38  
PV:10  
YP:8  
Gel:1/8  
WL:7.8  
Sol:4.9  
pH:10.0  
Cl:20K  
Cake:1

1280

SANDSTONE:clr-trnsl,med-v crs,  
mod-wl srtld,sbrnd,tr qtz ovghts &  
xls faces,lse,gd vis & inf por,no  
fluor.





WOB:18-23 klbs  
 RPM:120-130  
 SPP:900-1000 psi  
 FLOW:345-360 gpm

05-04-2007

MW:9.10 ppg  
 FV:35  
 PV:8  
 YP:9  
 Gel:1/6  
 WL:6.8  
 Sol:4.2  
 pH:9.0  
 Cl:22K  
 Cake:1

WOB:14-18 klbs  
 RPM:110-130  
 SPP:900-1010 psi  
 FLOW:350-360 gpm

96 / 4

92 / 6 / 2

10K

100K

10

92 / 5 / 2 / 1

100

1K

10K

92 / 5 / 2 / 1

96 / 3 / 1

100 / Tr

100 / Tr

SANDSTONE:a/a,f-med,occ crs, sbang-sbrnd,mod srtd,wk sil cmt, mnr disp cly mtx.

SILTSTONE:med-dk gry,occ lt brn,arg,micmic,carb spks,frm,fiss-sbfiss.

SANDSTONE:a/a,f-med,occ crs, mod srtd,sbang-sbrnd,mnr disp cly mtx,wk sil cmt.

SILTSTONE:med-dk gry,occ lt brn,arg,micmic,carb spks,frm,fiss-sbfiss.

SANDSTONE:trnsf,f-crs,mod srtd, sbang,tr mica flks,lse qtz grns,gd vis & inf por,no fluor.

SANDSTONE:trnsf,f-crs,mod srtd, sbang,tr mica flks,lse qtz grns,gd vis & inf por,no fluor.

SANDSTONE:trnsf,f-crs,mod srtd, sbang,tr mica flks,lse qtz grns,gd vis & inf por,no fluor.

SANDSTONE:trnsf,f-crs,mod srtd, ang-sbang,lse qtz grns,gd vis & inf por,no fluor.

0

25

50

0

10

20

20

40

60

1290

1300

1310

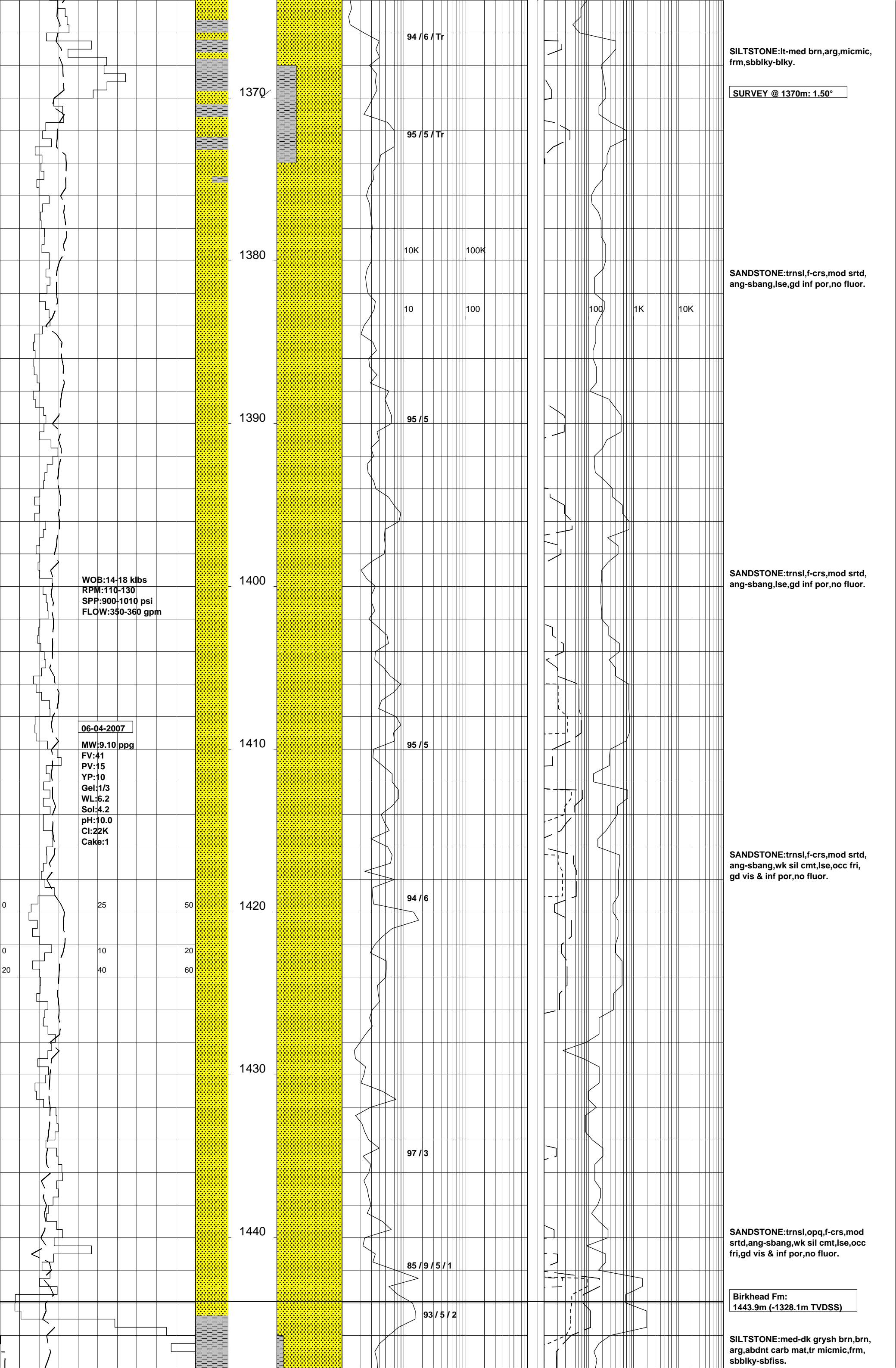
1320

1330

1340

1350

1360



SILTSTONE:lt-med brn,arg,micmic, frm,sbbiky-blky.

SURVEY @ 1370m: 1.50°

SANDSTONE:trnsf,f-crs,mod srtd, ang-sbang,lse,gd inf por,no fluor.

SANDSTONE:trnsf,f-crs,mod srtd, ang-sbang,lse,gd inf por,no fluor.

SANDSTONE:trnsf,f-crs,mod srtd, ang-sbang,wk sil cmt,lse,occ fri, gd vis & inf por,no fluor.

SANDSTONE:trnsf,opq,f-crs,mod srtd,ang-sbang,wk sil cmt,lse,occ fri,gd vis & inf por,no fluor.

Birkhead Fm: 1443.9m (-1328.1m TVDSS)

SILTSTONE:med-dk grysh brn,brn, arg,abndt carb mat,tr micmic,frm, sbbiky-sbfiss.

94 / 6 / Tr

95 / 5 / Tr

10K 100K

10 100 100 1K 10K

95 / 5

WOB:14-18 klbs  
RPM:110-130  
SPP:900-1010 psi  
FLOW:350-360 gpm

06-04-2007  
MW:9.10 ppg  
FV:41  
PV:15  
YP:10  
Gel:1/3  
WL:6.2  
Sol:4.2  
pH:10.0  
Cl:22K  
Cake:1

95 / 5

94 / 6

97 / 3

85 / 9 / 5 / 1

93 / 5 / 2

1370

1380

1390

1400

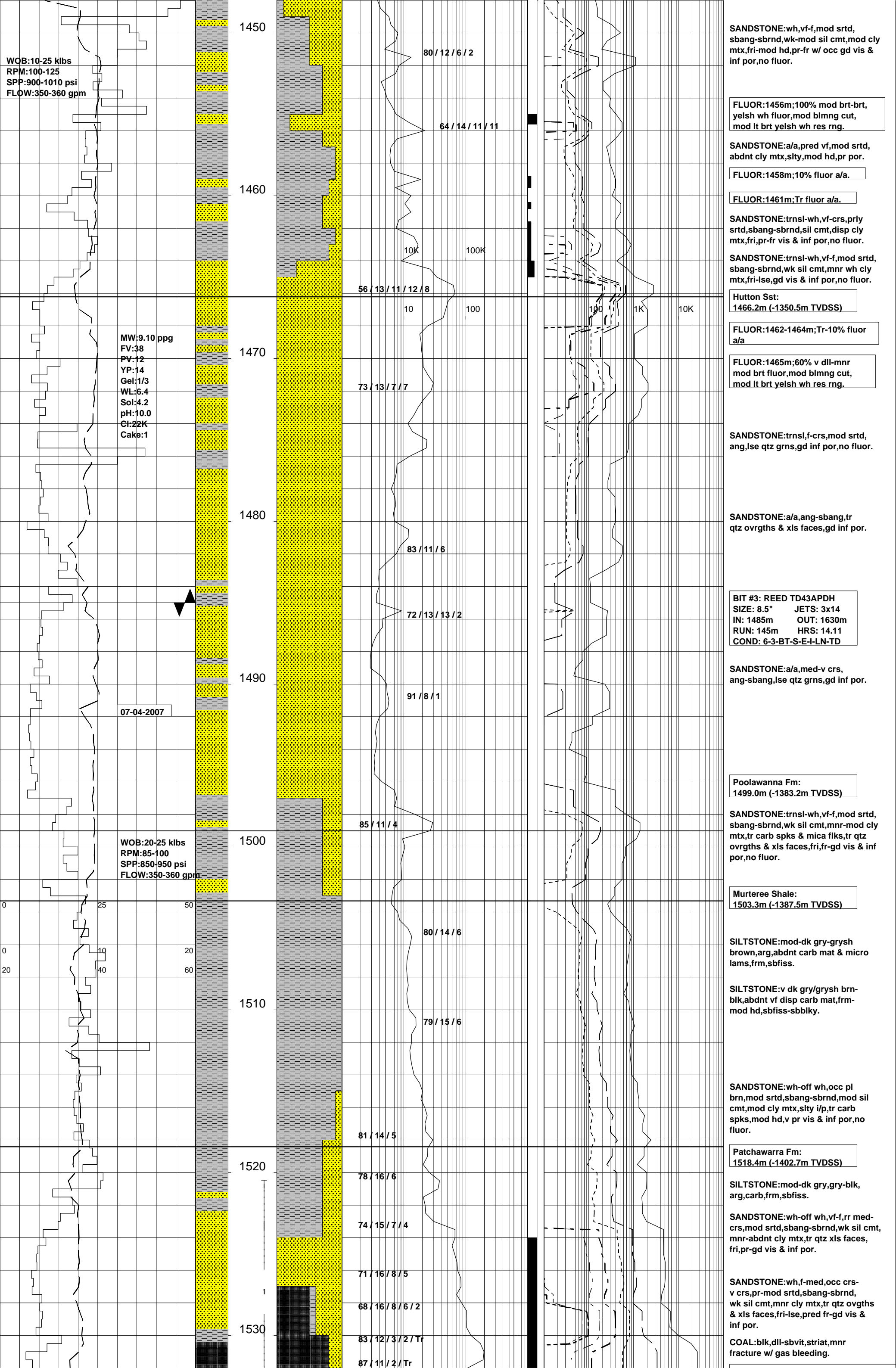
1410

1420

1430

1440

0 25 50  
0 10 20  
20 40 60



WOB:10-25 klbs  
 RPM:100-125  
 SPP:900-1010 psi  
 FLOW:350-360 gpm

MW:9.10 ppg  
 FV:38  
 PV:12  
 YP:14  
 Gel:1/3  
 WL:6.4  
 Sol:4.2  
 pH:10.0  
 Cl:22K  
 Cake:1

07-04-2007

WOB:20-25 klbs  
 RPM:85-100  
 SPP:850-950 psi  
 FLOW:350-360 gpm

1450  
1460  
1470  
1480  
1490  
1500  
1510  
1520  
1530

80 / 12 / 6 / 2  
 64 / 14 / 11 / 11  
 10K 100K  
 56 / 13 / 11 / 12 / 8  
 10 100  
 73 / 13 / 7 / 7  
 83 / 11 / 6  
 72 / 13 / 13 / 2  
 91 / 8 / 1  
 85 / 11 / 4  
 80 / 14 / 6  
 79 / 15 / 6  
 81 / 14 / 5  
 78 / 16 / 6  
 74 / 15 / 7 / 4  
 71 / 16 / 8 / 5  
 68 / 16 / 8 / 6 / 2  
 83 / 12 / 3 / 2 / Tr  
 87 / 11 / 2 / Tr

SANDSTONE:wh,vf-f,mod srted, sbang-sbrnd,wk-mod sil cmt,mod cly mtx,fri-mod hd,pr-fr w/ occ gd vis & inf por,no fluor.

FLUOR:1456m;100% mod brt-brt, yelsh wh fluor,mod blmng cut, mod lt brt yelsh wh res rng.

SANDSTONE:a/a,pred vf,mod srted, abdnt cly mtx,slty,mod hd,pr por.

FLUOR:1458m;10% fluor a/a.

FLUOR:1461m;Tr fluor a/a.

SANDSTONE:trnsi-wh,vf-crs,prly srted,sbang-sbrnd,sil cmt,disp cly mtx,fri,pr-fr vis & inf por,no fluor.

SANDSTONE:trnsi-wh,vf-f,mod srted, sbang-sbrnd,wk sil cmt,mnr wh cly mtx,fri-lse,gd vis & inf por,no fluor.

Hutton Sst:  
 1466.2m (-1350.5m TVDSS)

FLUOR:1462-1464m;Tr-10% fluor a/a

FLUOR:1465m;60% v dll-mnr mod brt fluor,mod blmng cut, mod lt brt yelsh wh res rng.

SANDSTONE:trnsi,f-crs,mod srted, ang,lse qtz grns,gd inf por,no fluor.

SANDSTONE:a/a,ang-sbang,tr qtz ovrgths & xls faces,gd inf por.

BIT #3: REED TD43APDH  
 SIZE: 8.5" JETS: 3x14  
 IN: 1485m OUT: 1630m  
 RUN: 145m HRS: 14.11  
 COND: 6-3-BT-S-E-I-LN-TD

SANDSTONE:a/a,med-v crs, ang-sbang,lse qtz grns,gd inf por.

Poolawanna Fm:  
 1499.0m (-1383.2m TVDSS)

SANDSTONE:trnsi-wh,vf-f,mod srted, sbang-sbrnd,wk sil cmt,mnr-mod cly mtx,tr carb spks & mica flks,tr qtz ovrgths & xls faces,fri,fr-gd vis & inf por,no fluor.

Murteree Shale:  
 1503.3m (-1387.5m TVDSS)

SILTSTONE:mod-dk gry-grysh brown,arg,abdnt carb mat & micro lams,frm,sbfiss.

SILTSTONE:v dk gry/grysh brn-blk,abdnt vf disp carb mat,frm-mod hd,sbfiss-sbbiky.

SANDSTONE:wh-off wh,occ pl brn,mod srted,sbang-sbrnd,mod sil cmt,mod cly mtx,slty i/p,tr carb spks,mod hd,v pr vis & inf por,no fluor.

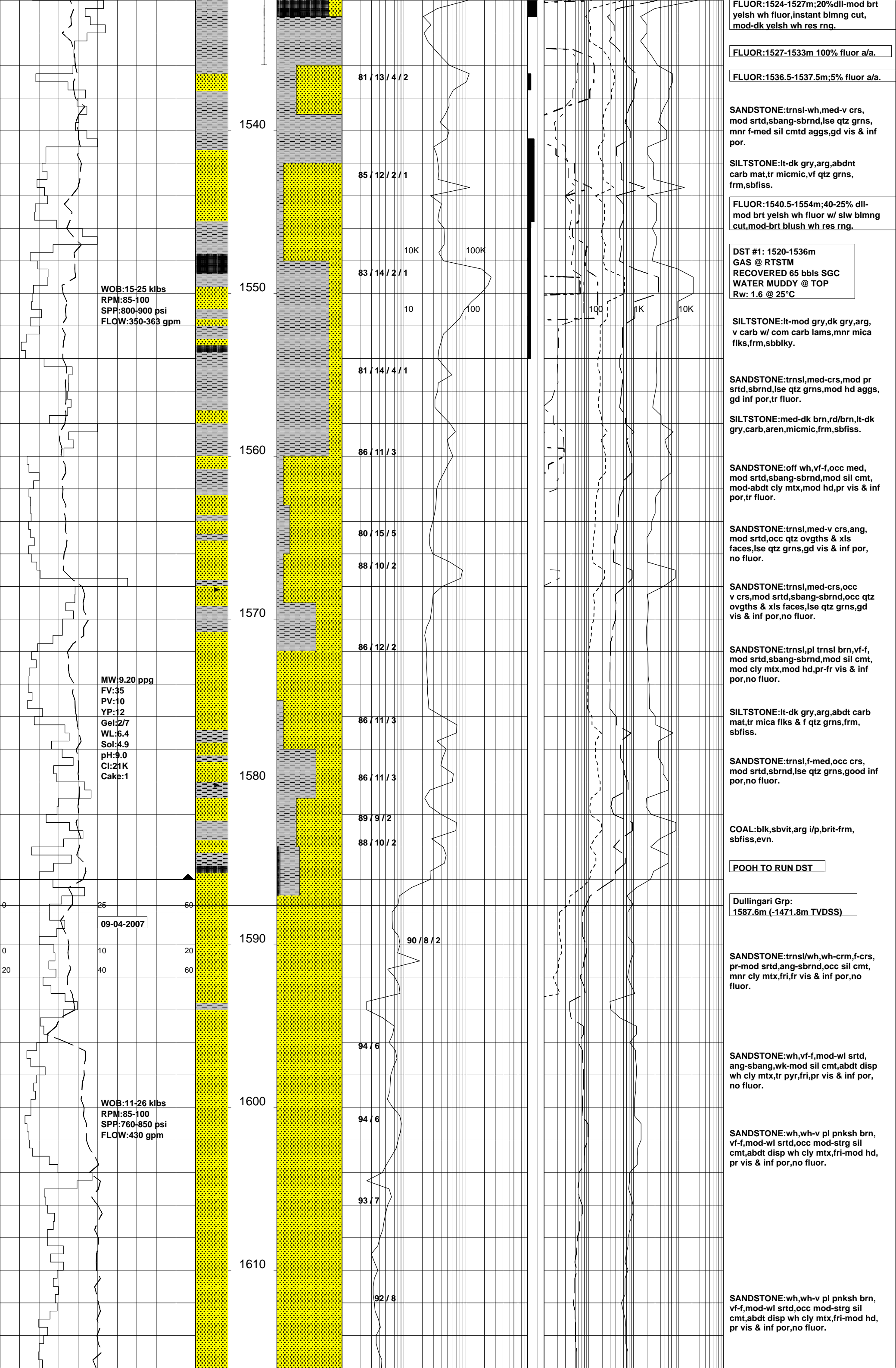
Patchawarra Fm:  
 1518.4m (-1402.7m TVDSS)

SILTSTONE:mod-dk gry,gry-blk, arg,carb,frm,sbfiss.

SANDSTONE:wh-off wh,vf-f,rr med-crs,mod srted,sbang-sbrnd,wk sil cmt, mnr-abdnt cly mtx,tr qtz xls faces, fri,pr-gd vis & inf por.

SANDSTONE:wh,f-med,occ crs-v crs,pr-mod srted,sbang-sbrnd, wk sil cmt,mnr cly mtx,tr qtz ovrgths & xls faces,fri-lse,pred fr-gd vis & inf por.

COAL:blk,dll-sbvit,striat,mnr fracture w/ gas bleeding.



WOB:15-25 klbs  
RPM:85-100  
SPP:800-900 psi  
FLOW:350-363 gpm

MW:9.20 ppg  
FV:35  
PV:10  
YP:12  
Gel:2.7  
WL:6.4  
Sol:4.9  
pH:9.0  
Cl:21K  
Cake:1

09-04-2007

WOB:11-26 klbs  
RPM:85-100  
SPP:760-850 psi  
FLOW:430 gpm

81 / 13 / 4 / 2

85 / 12 / 2 / 1

83 / 14 / 2 / 1

81 / 14 / 4 / 1

86 / 11 / 3

80 / 15 / 5

88 / 10 / 2

86 / 12 / 2

86 / 11 / 3

86 / 11 / 3

89 / 9 / 2

88 / 10 / 2

10K

100K

10

100

100

1K

10K

90 / 8 / 2

94 / 6

94 / 6

93 / 7

92 / 8

MW:9.20 ppg  
 FV:38  
 PV:10  
 YP:14  
 Gel:3/7  
 WL:6.8  
 Sol:4.9  
 pH:9.0  
 Cl:20K  
 Cake:1

1620

93 / 7

SURVEY @ 1620m: 1.50°

SANDSTONE:wh,wh-v pl pnksh brn,  
 vf-f,mod-wl srted,occ mod-strg sil  
 cmt,abdt disp wh cly mtx,fri-mod hd,  
 pr vis & inf por,no fluor.

SILTSTONE:pl blush gry,sil,low grd  
 meta,hd,blky.

93 / 7

1630

KEWARRA-1 REACHED TD  
 @ 15:30 HRS ON 09-04-2007

DRILLER'S DEPTH: 1630m  
 LOGGER'S DEPTH: 1631.7m

10K 100K

10 100

100 1K 10K

LOGGING RUNS:  
 RUN #1:HALS-BHC-PEX-GR  
 RUN #2:CST (SIDEWALL CORES)  
 RUN #3:CST (SIDEWALL CORES)

1640