

**Company: Beach Petroleum Ltd**  
**Well: Bodalla South #18**  
**Field: Bodalla South**  
**Rig: EWS W/O**

**Country: Australia**

**GR-CCL-JE**  
**Perforation Record 4.5" TCP**  
**Scale 1:200**

**Rig:** EWS W/O  
**Field:** Bodalla South  
**Location:** Bodalla south 3D Survey  
**Well:** Bodalla South #18  
**Company:** Beach Petroleum Ltd

LOCATION		Bodalla south 3D Survey	
Elev.:	K.B.	Elev.: 0 m	
	G.L.	153.8 m above Perm. Datum	
	D.F.	153.8 m	
Permanent Datum:	AHD		
Log Measured From:	RT		
Drilling Measured From:	RT		
State:	Max. Well Deviation	Longitude	Latitude
Queensland	5.25 deg	143 25' 10.1" E	16 16' 39.50"S

Logging Date	25-Oct-2007		
Run Number	1		
Depth Driller	1505 m		
Schlumberger Depth	1504 m		
Bottom Log Interval	1504 m		
Top Log Interval	1273 m		
Casing Fluid Type	Brine		
Salinity			
Density			
Fluid Level			
BIT/CASING/TUBING STRING			
Bit Size	8.500 in		
From			
To			
Casing/Tubing Size	7.000 in		
Weight	23 lbm/ft		
Grade			
From			
To			
Maximum Recorded Temperatures			
Logger On Bottom	25-Oct-2007		16:30
Unit Number	3140	AUMB	
Recorded By	Rob Gerhardt		
Witnessed By	Mr. T. Wadham		

PVT DATA			
	Run 1	Run 2	Run 3
Oil Density			
Water Salinity			
Gas Gravity			
Bo			
Bw			
1/Bg			
Bubble Point Pressure			
Bubble Point Temperature			
Solution GOR			
Maximum Deviation	5.25 deg		
CEMENTING DATA			
Primary/Squeeze	Primary		
Casing String No			
Lead Cement Type			
Volume			
Density			
Water Loss			
Additives			
Tail Cement Type			
Volume			
Density			
Water Loss			
Additives			
Expected Cement Top			
Logging Date			
Run Number			
Depth Driller			
Schlumberger Depth			
Bottom Log Interval			
Top Log Interval			
Casing Fluid Type			
Salinity			
Density			
Fluid Level			
BIT/CASING/TUBING STRING			
Bit Size			
From			
To			
Casing/Tubing Size			
Weight			
Grade			
From			
To			
Maximum Recorded Temperatures			
Logger On Bottom			
Unit Number			
Recorded By			
Witnessed By			

## DEPTH SUMMARY LISTING

Date Created: 26-OCT-2007 11:07:35

### Depth System Equipment

Depth Measuring Device	Tension Device	Logging Cable
Type: IDW-B	Type: CMTD-B/A	Type: 7-42V-XS
Serial Number: 2001	Serial Number: 2262	Serial Number: 6284
Calibration Date: 29-Jul-2007	Calibration Date: 04-Sep-2007	Length: 4614.06 M
Calibrator Serial Number: 1009	Calibrator Serial Number: 1050	Conveyance Method: Wireline
Calibration Cable Type: 7-46P	Calibration Gain: 0.93	Rig Type: LAND
Wheel Correction 1: -4	Calibration Offset: -198.00	
Wheel Correction 2: -2		

### Depth Control Parameters

Log Sequence: Subsequent Log In the Well  
Reference Log Name: HALS-BHC-PEX-GR-S  
Reference Log Run Number:  
Reference Log Date: 10-Aug-2007

#### DISCLAIMER

THE USE OF AND RELIANCE UPON THIS RECORDED-DATA BY THE HEREIN NAMED COMPANY (AND ANY OF ITS AFFILIATES, PARTNERS, REPRESENTATIVES, AGENTS, CONSULTANTS AND EMPLOYEES) IS SUBJECT TO THE TERMS AND CONDITIONS AGREED UPON BETWEEN SCHLUMBERGER AND THE COMPANY, INCLUDING: (a) RESTRICTIONS ON USE OF THE RECORDED-DATA; (b) DISCLAIMERS AND WAIVERS OF WARRANTIES AND REPRESENTATIONS REGARDING COMPANY'S USE OF AND RELIANCE UPON THE RECORDED-DATA; AND (c) CUSTOMER'S FULL AND SOLE RESPONSIBILITY FOR ANY INFERENCE DRAWN OR DECISION MADE IN CONNECTION WITH THE USE OF THIS RECORDED-DATA.

REMARKS: RUN NUMBER 1

GR-CCL recorded from PBTD to 1300 mtrs.

PBTD found to be at 1504 Mtrs.

Junk Basket/ Gauge Ring run below GR-CCL

Marker joint found at 1468 - 1471 Mtrs.

Perforation Interval 1447 - 1459 Mtrs, performed with 4.5" TCP 5spf

powerjet 4505 charges.

Firing mechanism used: HDE D/GYAR 2.68"

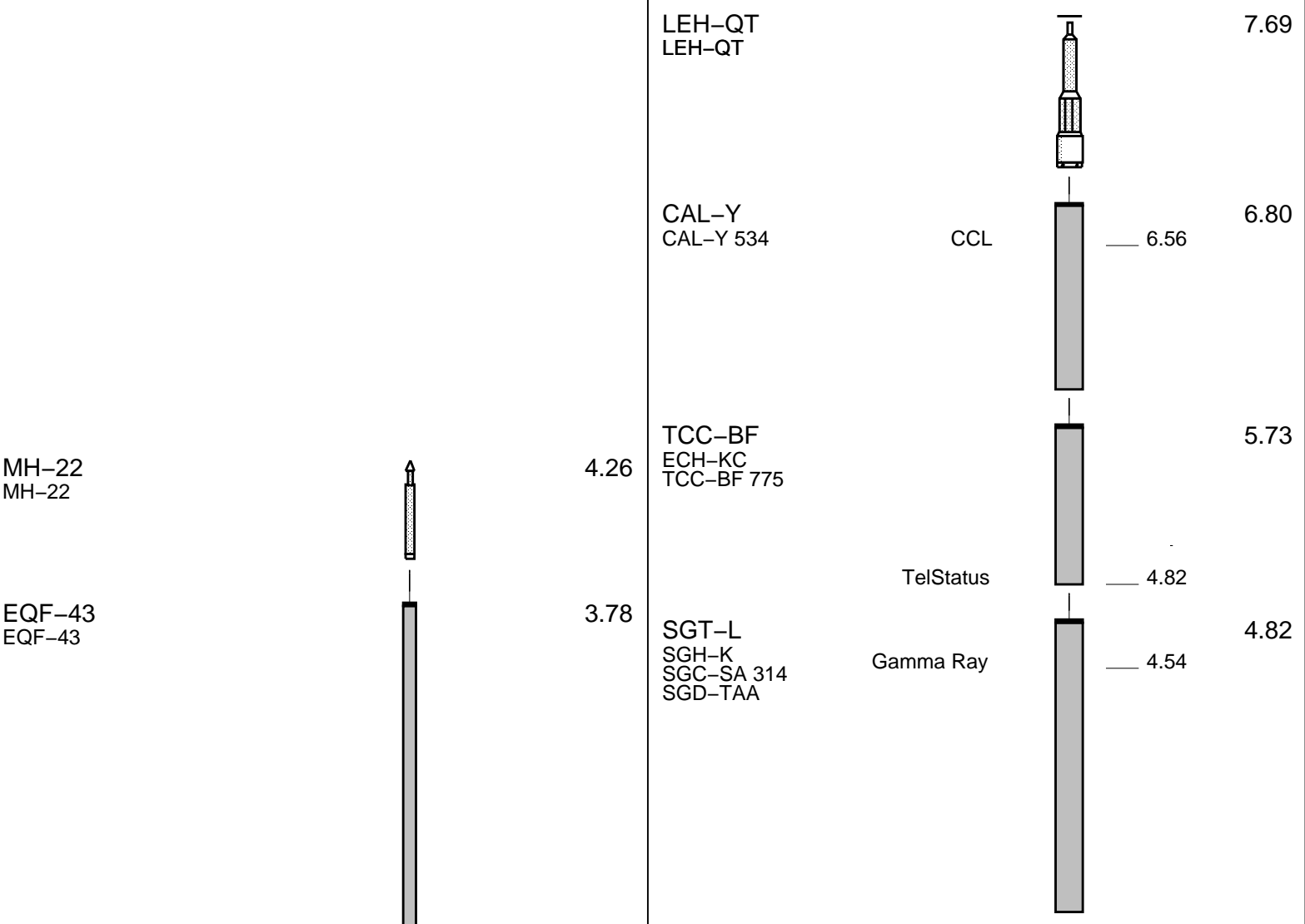
Firing mechanism used: HDF-D/ SXAR 3.68 .  
 TCP guns correlated to HALS-BHC-PEX-GR-SP of 10-Aug-07;  
 Distance from Pip Tag to top shot = 35.64 Mtrs.  
 Pip Tag found at 1410 Mtrs, Guns need to move Down 1.36 Mtrs to be on depth.

RUN 1			RUN 2		
SERVICE ORDER #: PROGRAM VERSION: FLUID LEVEL:			SERVICE ORDER #: PROGRAM VERSION: FLUID LEVEL:		
15C0-309					
LOGGED INTERVAL	START	STOP	LOGGED INTERVAL	START	STOP

**EQUIPMENT DESCRIPTION**

RUN 1	RUN 2
SURFACE EQUIPMENT	SURFACE EQUIPMENT
WITM (SHM)	GSR-U/Y WITM (CTS)-A

RUN 1	RUN 2
DOWNHOLE EQUIPMENT	DOWNHOLE EQUIPMENT



BNS-CCS  
BNS-CCS

PGGT-C  
PGGC 141  
PGGH-A 141

1.96

Gamma Ray

0.48

Casing Co  
Tension

TOOL ZERO

SHM\_GUN

TOOL BOTTOM

0.00

MAXIMUM STRING DIAMETER 1.69 IN  
MEASUREMENTS RELATIVE TO TOOL ZERO  
ALL LENGTHS IN METERS

DF  
Tension HV

TOOL ZERO

0.00

MAXIMUM STRING DIAMETER 6.00 IN  
MEASUREMENTS RELATIVE TO TOOL ZERO  
ALL LENGTHS IN METERS

Production String	(in)		(m)	Well Schematic	(m)	(in)		Casing String
	OD	ID	MD		MD	OD	ID	
Tubing	2.875		0.0		0.0	9.625		Borehole Segment  Casing Shoe Borehole Segment
					198.8	8.500		

Tubing Anchor

6.000

1410.4  
1411.36

Tubing

2.875

1430.47

Perforated Joint

2.875

Tubing

2.875

1432.3

SXAR/HDF

3.680

1442.0

Safety Spacer

4.500

1443.0

TCP

4.500

1447.0

1447.0

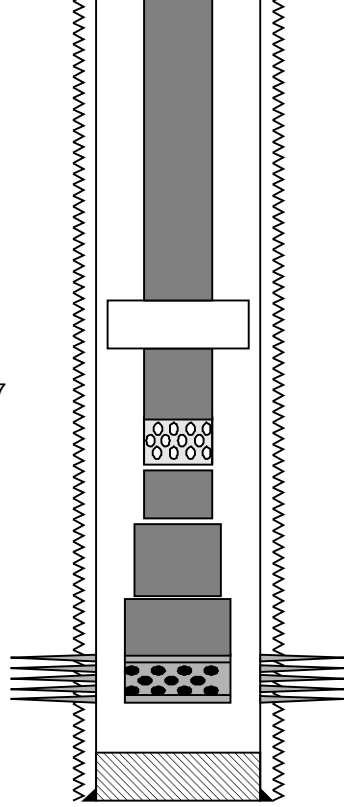
Perforation Zone

1505.0

1505.0

7.000

PBTD  
Casing Shoe



**Schlumberger**

**GR-CCL**

MAXIS Field Log

Company:

Well:

**Input DLIS Files**

DEFAULT	GR_CCL_003LUP	FN:2	PRODUCER	25-Oct-2007 16:14	1506.0 M	1271.8 M
---------	---------------	------	----------	-------------------	----------	----------

**Output DLIS Files**

DEFAULT	GR_CCL_004PUP	FN:3	PRODUCER	25-Oct-2007 16:33	1506.2 M	1272.4 M
---------	---------------	------	----------	-------------------	----------	----------

**OP System Version: 15C0-309**

MCM

SGT-L	15C0-309	TCC-BF	15C0-309
CAL-Y	15C0-309		

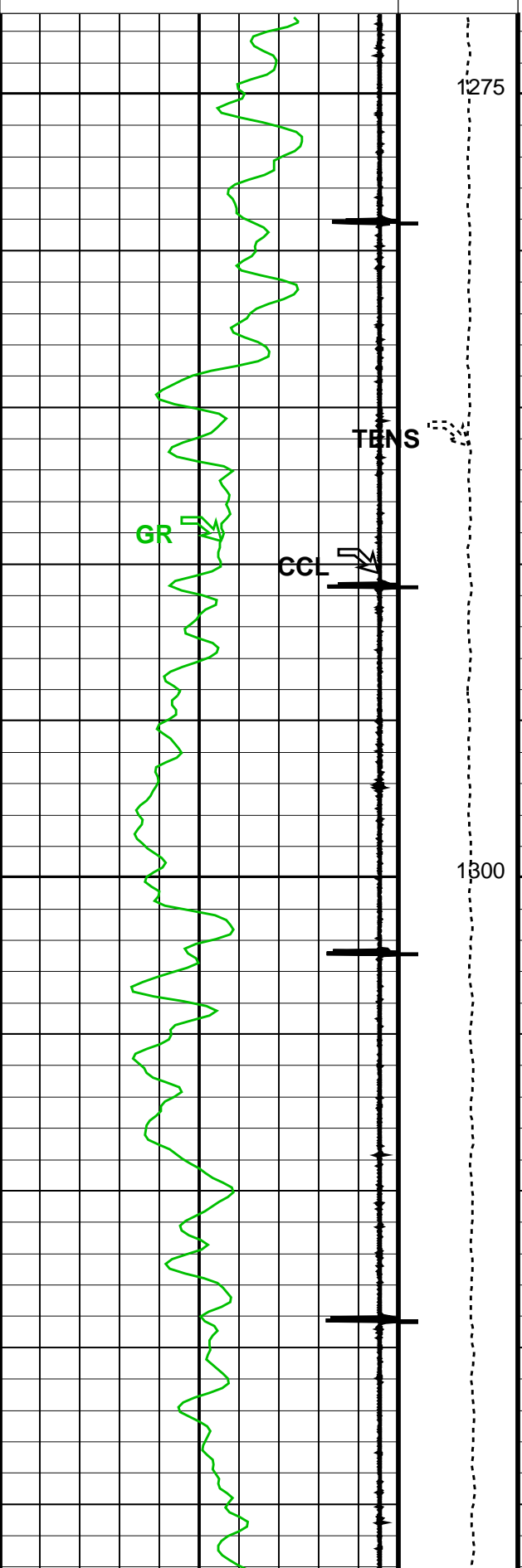
**PIP SUMMARY**

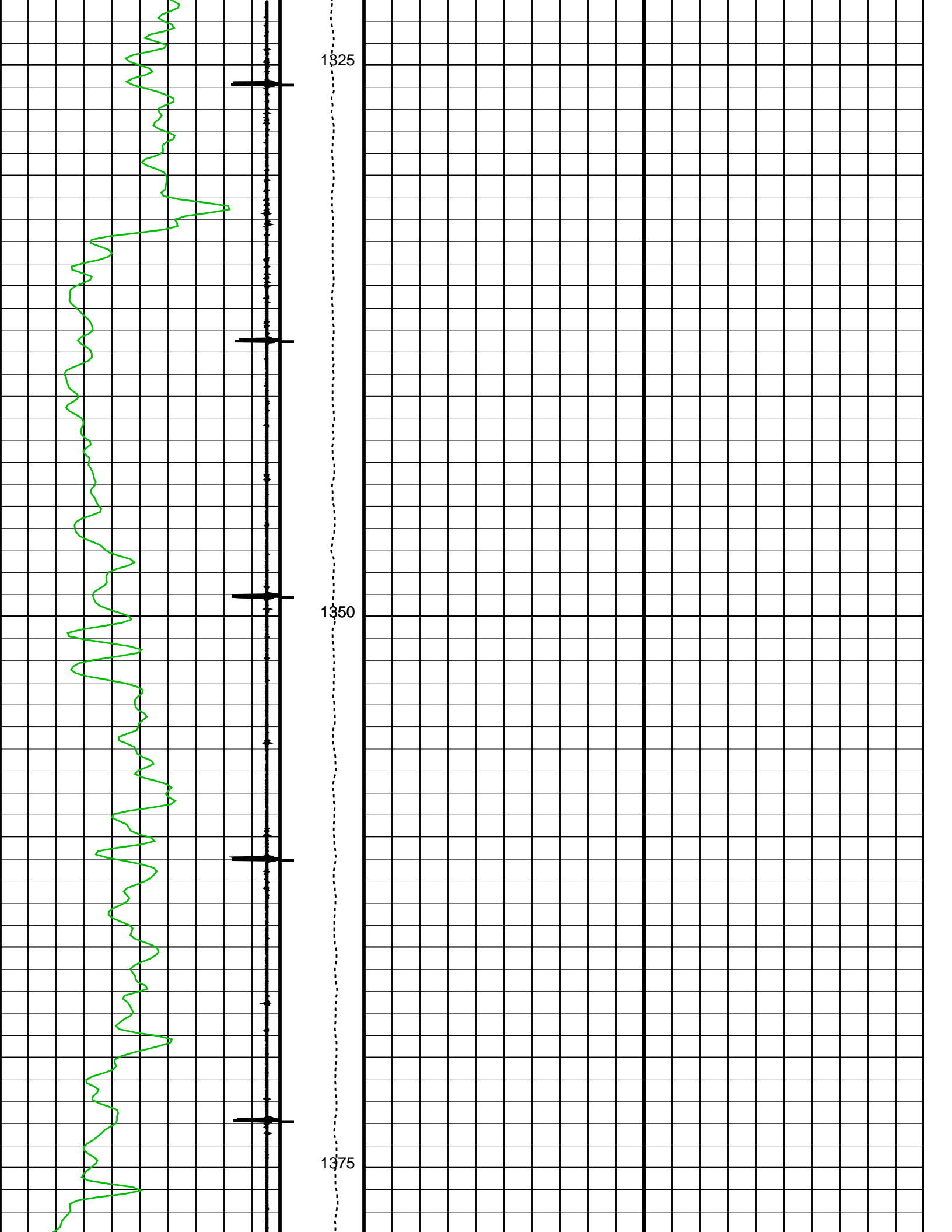
└ Casing Collars

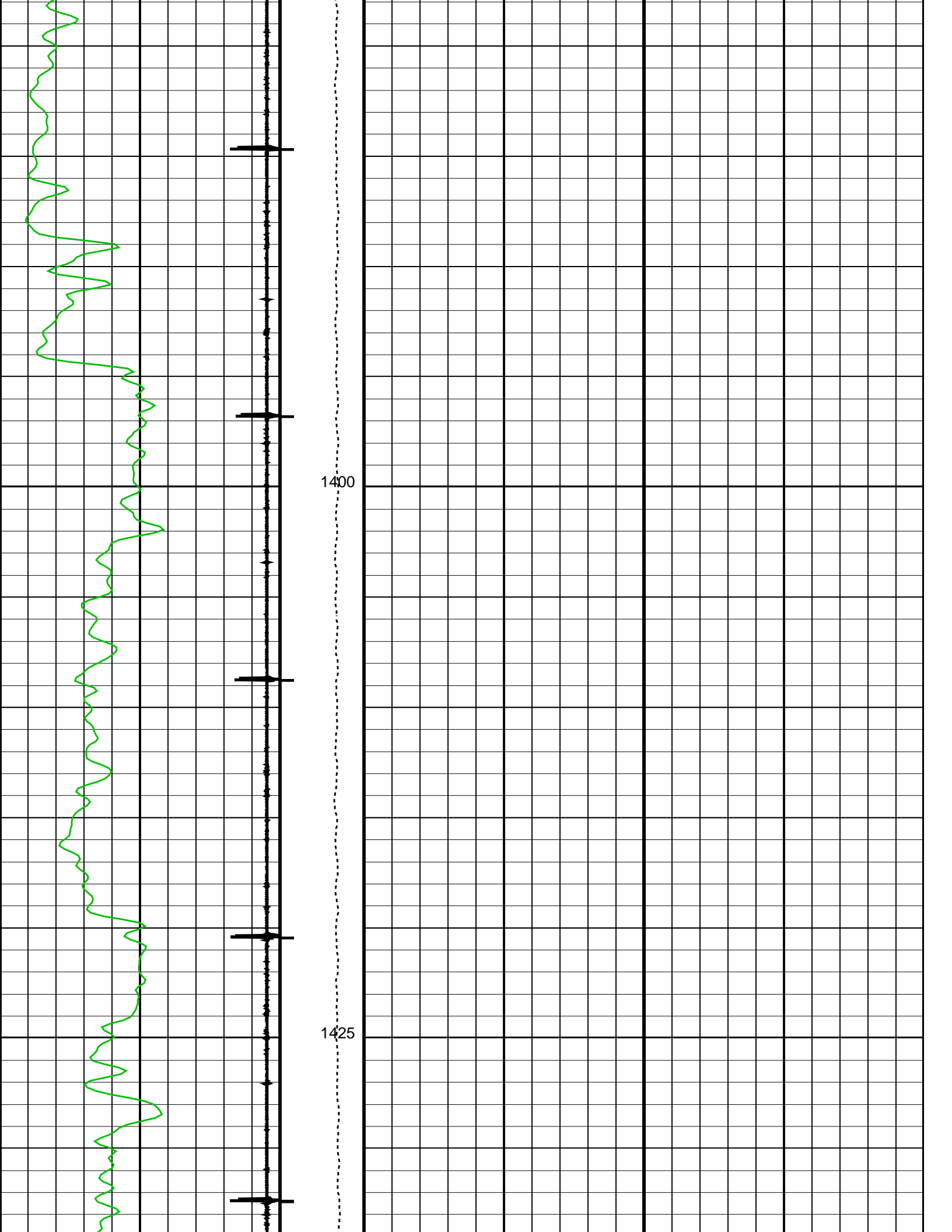
Casing Collar Locator (CCL)      -19      (----)      1

Gamma Ray (GR)      Tension (TENS) (LBF)

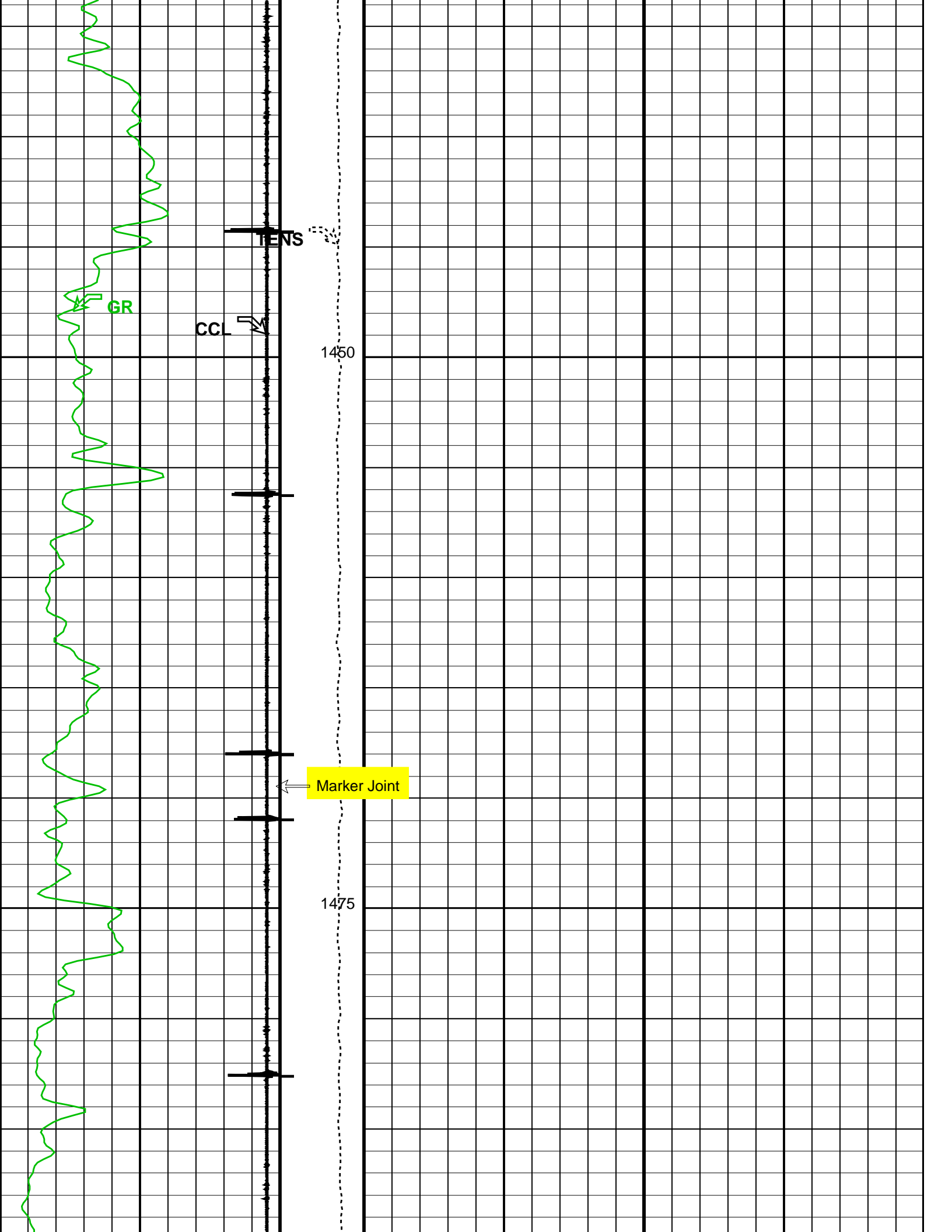
0      150      0      1000

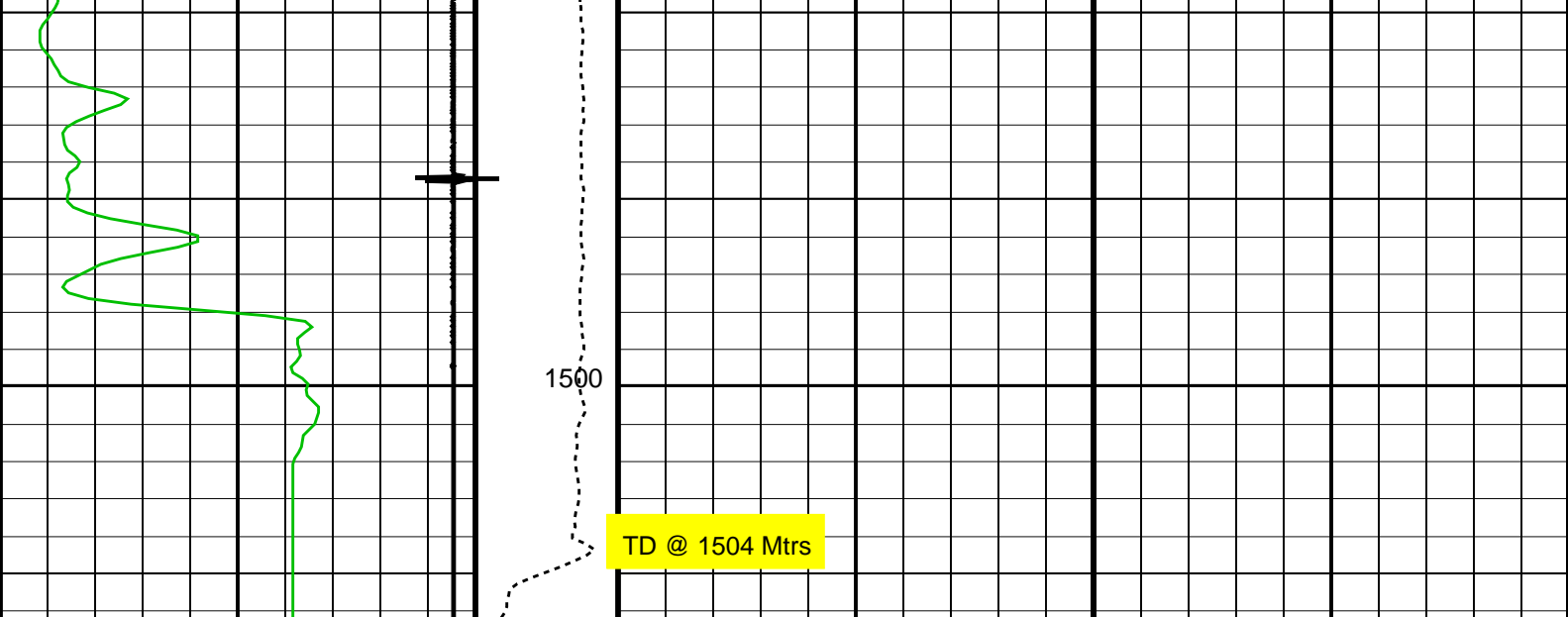












Gamma Ray (GR) (GAPI)	0	150
Casing Collar Locator (CCL)	-19	1

Tension (TENS) (LBF)	0	1000
-------------------------	---	------

**PIP SUMMARY**  
← Casing Collars

Parameters		
DLIS Name	Description	Value
CCLD	CAL-Y: Casing Anomaly Locator - Y	
CCLT	CCL reset delay	12 IN
	CCL Detection Level	0.3 V
	System and Miscellaneous	
DO	Depth Offset for Playback	0.2 M
PP	Playback Processing	NORMAL

Format: CORRELATION    Vertical Scale: 1:200    Graphics File Created: 25-Oct-2007 16:33

<b>OP System Version: 15C0-309</b>			
MCM			
SGT-L	15C0-309	TCC-BF	15C0-309
CAL-Y	15C0-309		

Input DLIS Files						
DEFAULT	GR_CCL_003LUP	FN:2	PRODUCER	25-Oct-2007 16:14	1506.0 M	1271.8 M

Output DLIS Files						
DEFAULT	GR_CCL_004PUP	FN:3	PRODUCER	25-Oct-2007 16:33		



**TCP Correlation**

### Input DLIS Files

DEFAULT	PERFO_008LUP	FN:8	PRODUCER	28-Oct-2007 07:40	1435.2 M	1364.9 M
---------	--------------	------	----------	-------------------	----------	----------

### Output DLIS Files

DEFAULT	PERFO_010PUP	FN:12	PRODUCER	28-Oct-2007 07:52	1435.3 M	1365.7 M
BODALLA_STH_18	PERFO_010PUC	FN:13	CUSTOMER	28-Oct-2007 07:52	1435.3 M	1365.7 M

### OP System Version: 15C0-309

MCM

SHM\_GUN SRPC-3357-Q2\_2007

PGGT-C

SRPC-3357-Q2\_2007

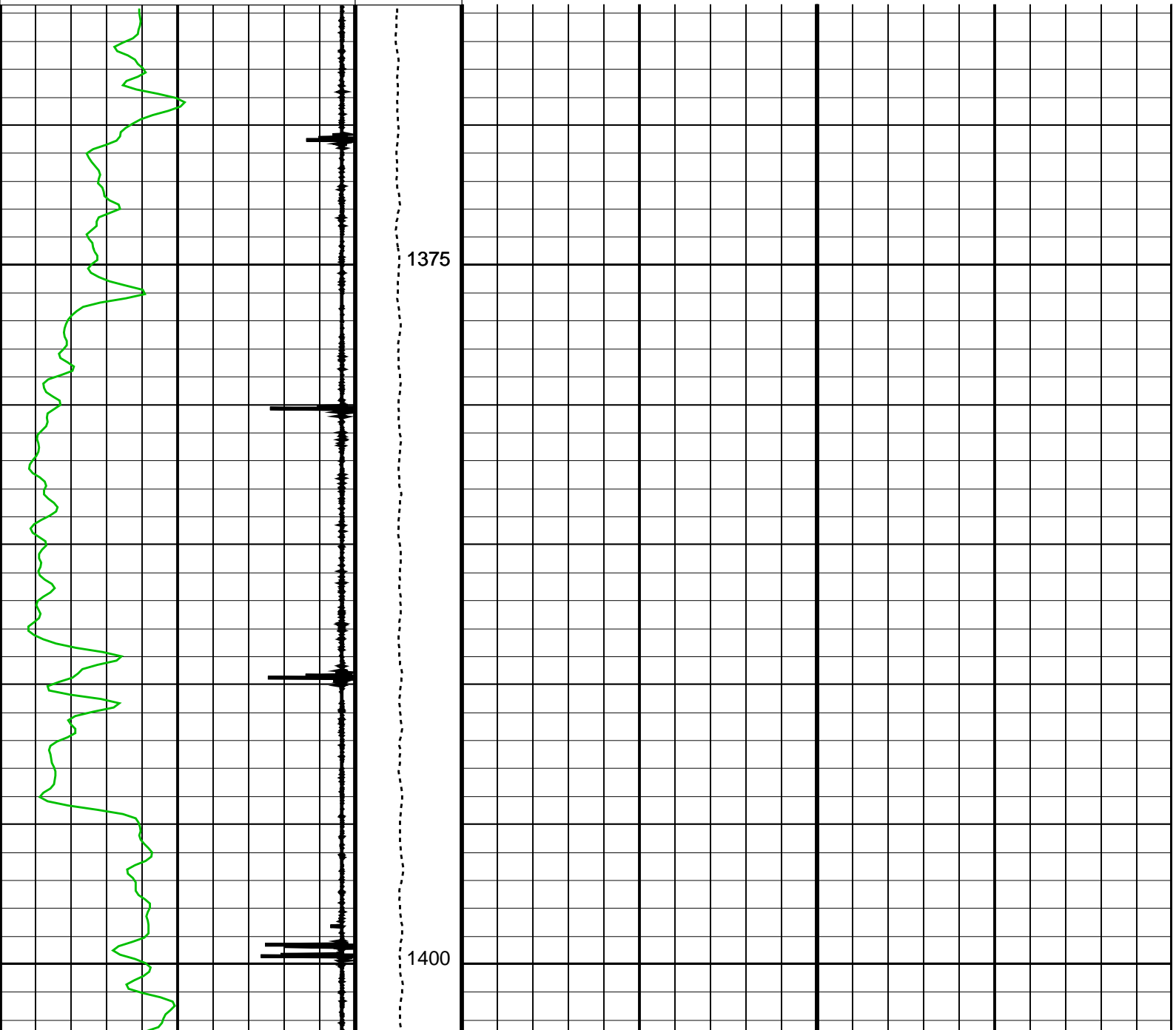
#### Casing Collar Locator (CCL)

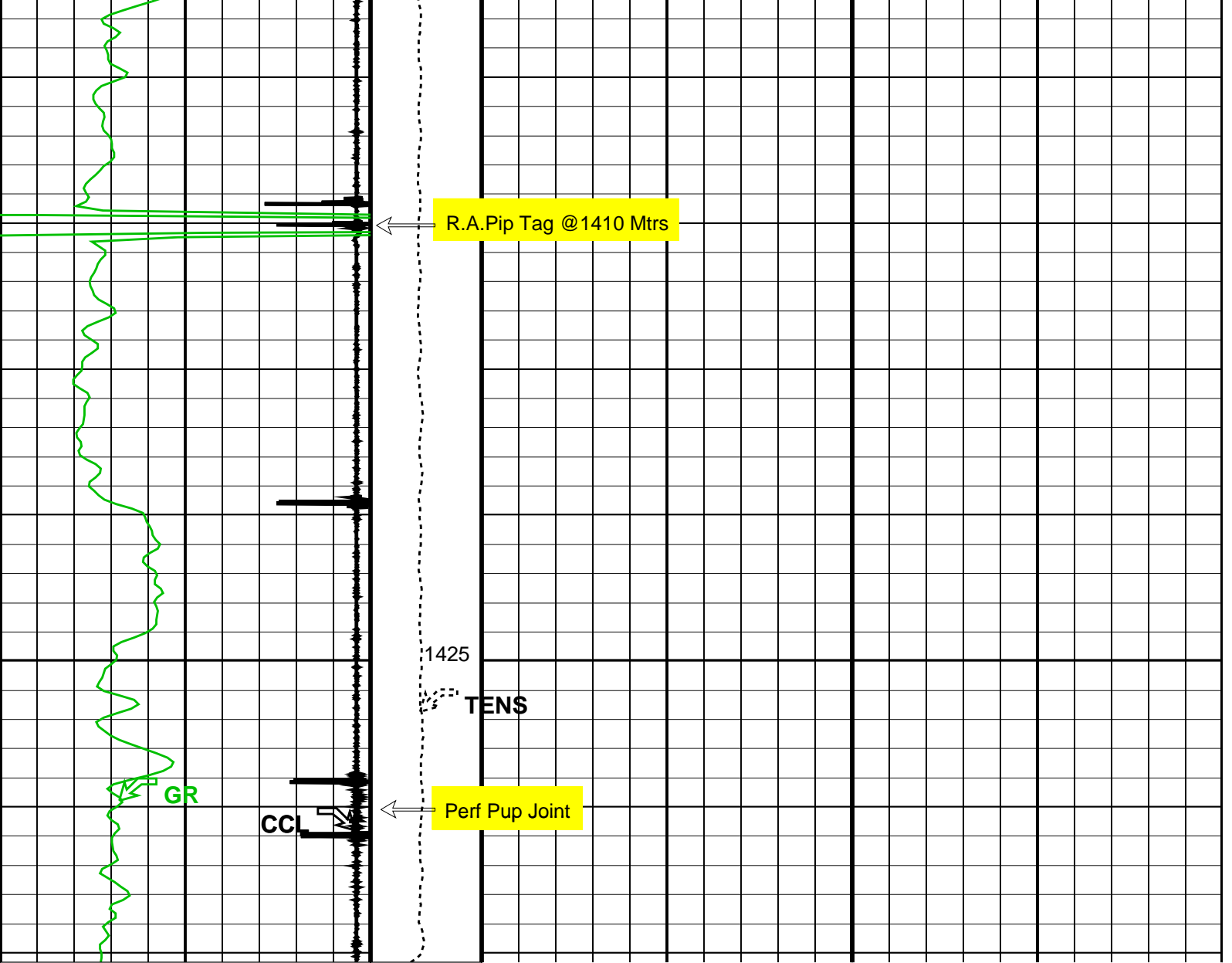
-19 (----) 1

Gamma Ray (GR)  
(GAPI) 100

Tension  
(TENS)  
(LBF)

0 1000





Gamma Ray (GR) (GAPI)	0	100
Casing Collar Locator (CCL) (----	-19	1

Tension (TENS) (LBF)	0	1000
-------------------------	---	------

Parameters		
DLIS Name	Description	Value
DO	System and Miscellaneous	
PP	Depth Offset for Playback Playback Processing	0.1 M NORMAL
Format: CORRELATION Vertical Scale: 1:200		Graphics File Created: 28-Oct-2007 07:52

<b>OP System Version: 15C0-309</b>			
MCM			
SHM_GUN	SRPC-3357-Q2_2007	PGGT-C	SRPC-3357-Q2_2007

Input DLIS Files						
DEFAULT	PERFO_008LUP	FN:8	PRODUCER	28-Oct-2007 07:40	1435.2 M	1364.9 M

Output DLIS Files						
DEFAULT	PERFO_010LUP	FN:10	PRODUCER	28-Oct-2007 07:52		

Company: **Beach Petroleum Ltd**

**Schlumberger**

Well: **Bodalla South #18**

Field: **Bodalla South**

Rig: **EWS W/O**

Country: **Australia**

GR-CCL-JB

Perforation Record 4.5" TCP

Scale 1:200