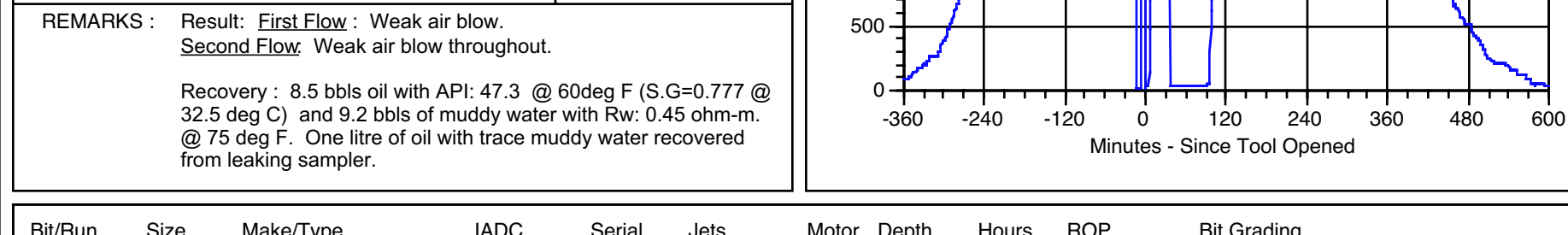
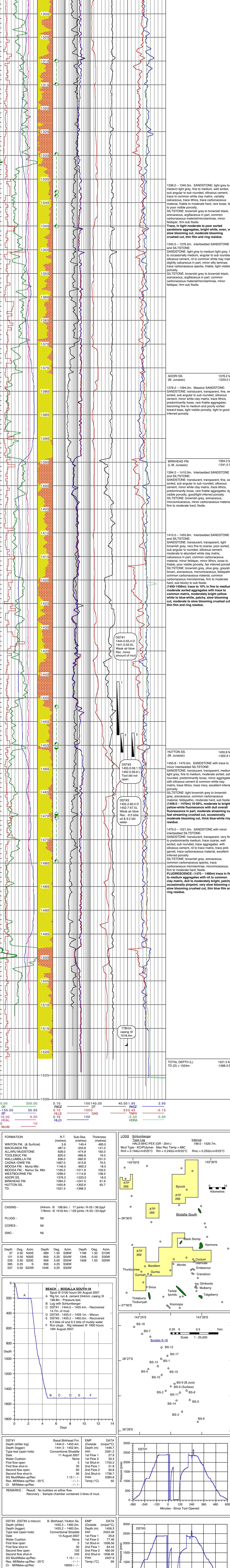
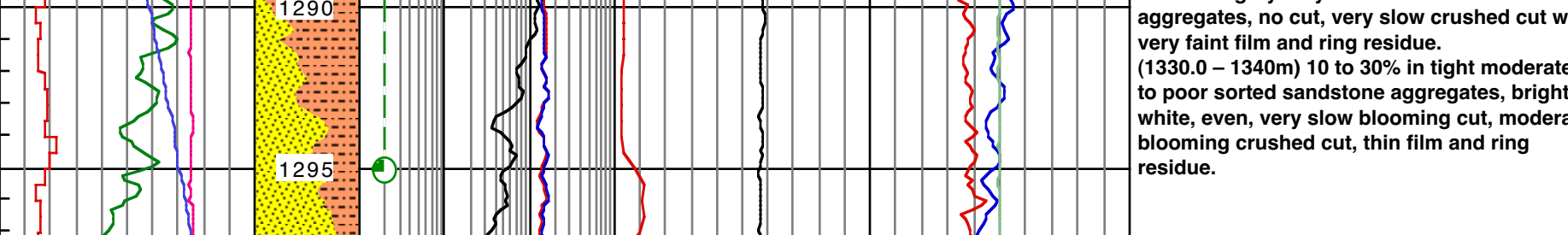
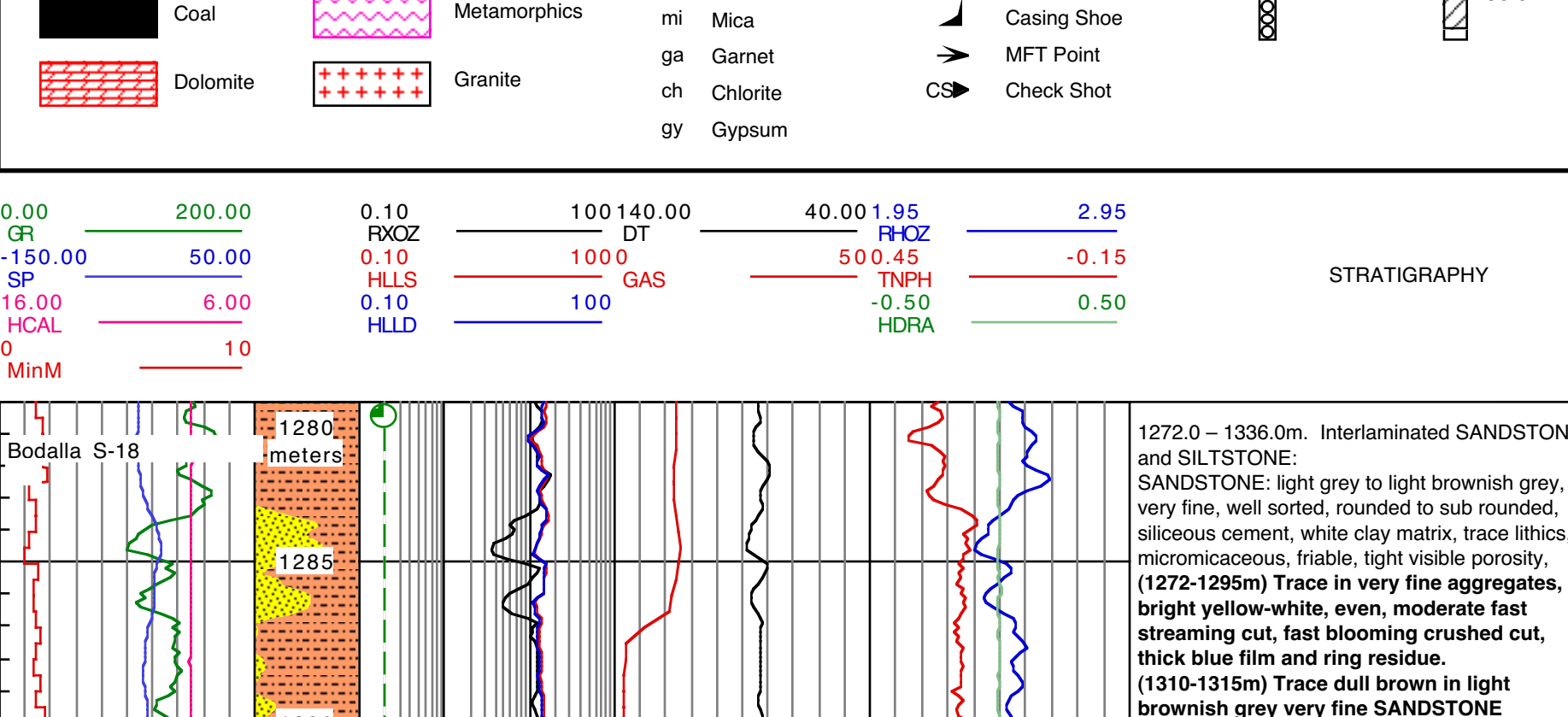


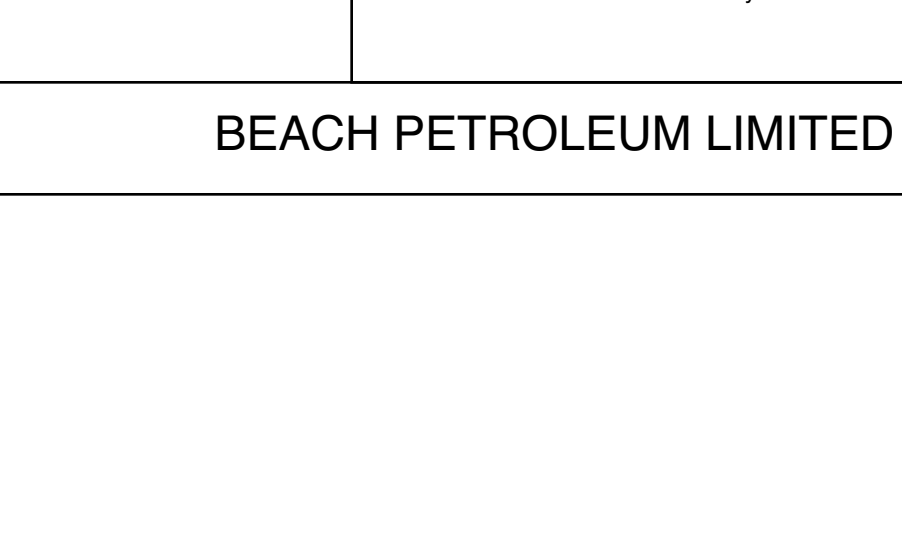
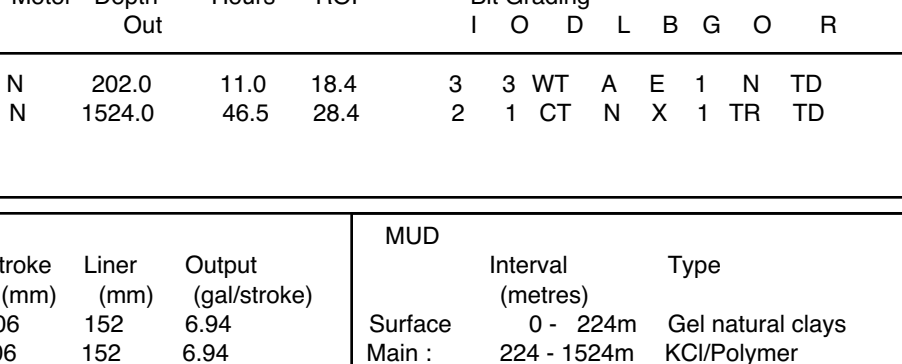
PERMIT:	PL 31	REGION:	EROMANGA - QLD	BASIN	EROMANGA
LOCATION (surface):	(GDA 94) Latitude 26°26'39.5023"S Longitude 143°25'10.1014"E	TOTAL DEPTH:	Driller: 1524.0m. Logger (extrapolated): 1521.5m.	DATUM:	Permanent Datum: MSL Logs Datum: R.T. Drilling Datum: R.T. Elevation: R.T. - 153.2m. G.L. - 149.4m.
MGA 94 (54) Ref.:	741 260644E 7 072 841.178N	DATE:	Spudded: 05/08/2007 Rig Released: 16/08/2007		
Seismic Survey :	Bodalla South 3D	STATUS:	Oil Well		
Seismic Station :	InLine 325 / XLine 187				
Drilling Co.:	Hunt Energy Rig #2	Wireline Logs: Mudlogging:	Schlumberger Geoservices	Composite Log: Wellsite Geologist:	D.A. Short P. Morris Janury 2008



FORMATION	(metres)	Sub-Sea (metres)	Thickness (metres)
WINTON FM. (& Surficial)	3.8	149.4	146.0
MACKUNDA FM.	497.0	-333.8	141.0
ALLARU MUDSTONE	628.0	-474.8	192.0
TOOLEBUC FM.	820.0	-666.8	16.0
WALLUMBILLA FM.	836.0	-682.8	231.0
CADNA-CWIE FM.	1027.0	-913.8	79.5
MOOGA FM. - Murur Mbr.	1146.5	-993.3	18.5
WESTBOURNE FM.	1185.0	-1011.8	103.0
ADORI SS.	1268.0	-1114.8	108.2
BIRKHEAD FM.	1376.2	-1223.0	18.0
HUTTON SS.	1394.2	-1241.0	61.6
TD.	1455.8	-1302.6	65.7

CASING -	244mm @ 198.8m. / 17 joints / K-55 / 36.0ppf 178mm @ 1518.4m. / 129 joints / K-55 / 23.0ppf
PLUGS -	Nil
CORES -	Nil
SWC -	Nil

Depth	Deg.	Azim.	Depth	Deg.	Azim.	Depth	Deg.	Azim.
37	0.70	N46E	669	1.50	S38W	1196	1.50	S10W
121	0.50	N30E	859	6.25	S54W	1346	0.50	S30W
235	0.25	S20E	906	5.00	S55W	1508	1.50	S20W
385	0.25	S	956	4.25	S56W			
537	0.50	S22W	1046	3.25	S33W			



DST#1	Basal Birkhead Fm. 1444.0 - 1455.4m. Conventional Stratidie 11 August 2007	EMP (Outside) (m/psi/°C) 1446.7	DATA (m/psi/°C) 2439.2
Depth (driller)	1445.2 - 1452.9m.	IHH	29.8
Depth (logger)	1445.2 - 1460.0m.	1st Flow 1	27.9
Type test (open hole)	Conventional Stratidie	1st Flow 2	33.4
Date	11 August 2007	2nd Flow 1	17.5
Water Cushman	None	2nd Flow 2	31.8
First flow open	5	2nd Shut-in	1736.7
First flow shut-in	30	FHH	2384.6
Second flow open	60	Temp (°C)	99
Second flow shut-in	90		
SG Mud/Make-up/Rec	1.15 / - / -		
Res. Mf/Make-up/Rec - 25°C	- / - / -		
Cl- Mf/Make-up/Rec	19000 / - / -		

DST#3 (DST#2 a misrun)	B. Birkhead / Hutton Ss. 1455.2 - 1460.0m. Conventional Stratidie 13 August 2007	EMP (Outside) (m/psi/°C) 2424.39	DATA (m/psi/°C) 29.8
Depth (driller)	1455.2 - 1460.0m.	1st Flow 1	77.46
Depth (logger)	1455.2 - 1460.0m.	2nd Flow 1	84.44
Type test (open hole)	Conventional Stratidie	2nd Flow 2	460.59
Date	13 August 2007	2nd Shut-in	1938.45
Water Cushman	None	FHH	2407.9
First flow open	5	Temp (°C)	99
First flow shut-in	30		
Second flow open	60		
Second flow shut-in	240		
SG Mud/Make-up/Rec	1.15 / - / -		
Res. Mf/Make-up/Rec - 25°C	- / - / -		
Cl- Mf/Make-up/Rec	19000 / - / -		

BIT/Run No.	Size (mm)	Make/Type	IADC Code	Serial No.	Jets	Motor	Depth (m)	Hours	ROP	Bit Grading
1/1	311	Hughes / GT-C1	117	6033357	3 x 18	N	202.0	11.0	18.4	3 3 WT A E 1 N TD
2/2	216	REED / DSX419S	437	2140007	4 x 16	N	1524.0	46.5	28.4	2 1 CF N X 1 TR TD

BIT & PUMP PARAMETERS	Press (psi)	Pump (psi)	PUMPS	Stroke (mm)	Liner (mm)	Output (gal/stroke)	MUD	Interval (metres)	Type
1/1	5/20	120/120	No. Type	406	152	6.94	Surface	0 - 224m	Gel natural clays
2/2	5/10	100/120	2 CE DB 550 Duplex	406	152	6.94	Main:	224 - 1524m	KCl/Polymer