

RPM: 80-95
SPP: 0-30 psi
FLOW: 280-310 gpm

WOB: 2-5 klbs
RPM: 95-160
SPP: n/w
FLOW: 475-485 gpm

MW:8.9
FV:43
PV:9
YP:11
GEL:3/7
WL:-
SOL:-
pH:8.6
CL:2000
KCL:-

WOB: 2-8 klbs
RPM: 45-160
SPP: n/w
FLOW: 475-530 gpm

30

40

50

60

70

80

90

100

NO GAS

NO GAS

NO GAS

SANDSTONE:off wh,grysh grn,
occ yelsh brn,pl org,f-med,pred f,
mod srted,sbang-sbrnd,wk sil cmt,
arg mtx,com glauc grns,rr pyr,
no fluor.

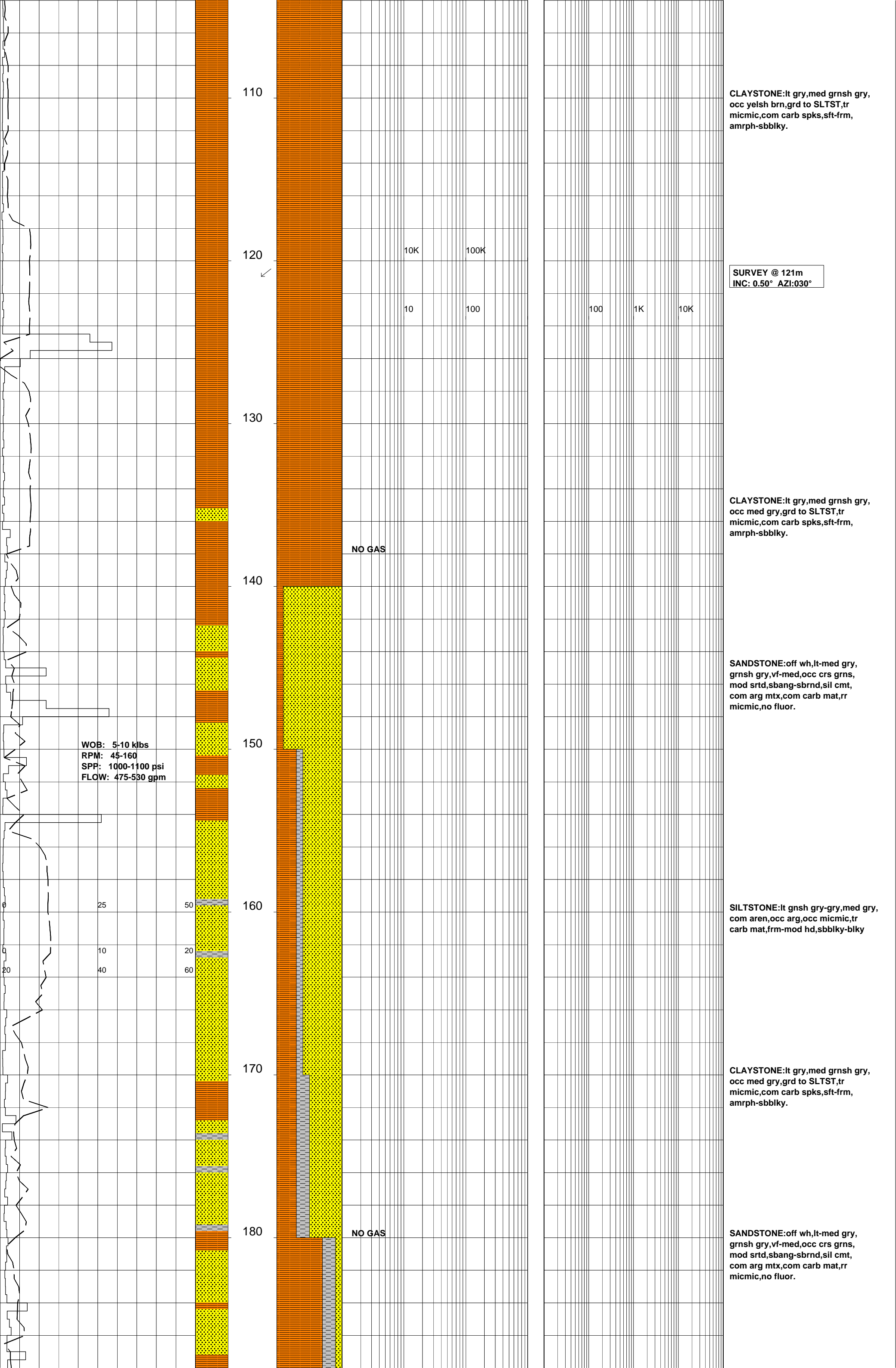
CLAYSTONE:olv gry,med gry,mnr
yelsh brn,grd to SLTST,tr micmic,
sft frm,amrph-sbblky,occ disp.

SURVEY @ 37m
INC: 0.50° AZI:045°

SANDSTONE:off wh,grysh grn,
occ yelsh brn,pl org,f-med,pred f,
mod srted,sbang-sbrnd,wk sil cmt,
arg mtx,com glauc grns,rr pyr,
no fluor.

CLAYSTONE:lt gry-med grnsh gry,
grd to SLTST,tr micmic,com carb
spks,sft frm,amrph-sbblky,
occ disp.

CLAYSTONE:lt gry-med grnsh gry,
grd to SLTST,tr micmic,com carb
spks,sft frm,amrph-sbblky,
occ disp.



CLAYSTONE:lt gry,med grnsh gry, occ yelsh brn,grd to SLTST,tr micmic,com carb spks,sft frm, amrph-sbblky.

SURVEY @ 121m
INC: 0.50° AZI:030°

CLAYSTONE:lt gry,med grnsh gry, occ med gry,grd to SLTST,tr micmic,com carb spks,sft frm, amrph-sbblky.

SANDSTONE:off wh,lt-med gry, grnsh gry,vf-med,occ crs grns, mod srtd,sbang-sbrnd,sil cmt, com arg mtx,com carb mat,rr micmic,no fluor.

SILTSTONE:lt gnsh gry-gry,med gry, com aren,occ arg,occ micmic,tr carb mat,frm-mod hd,sbblky-blky

CLAYSTONE:lt gry,med grnsh gry, occ med gry,grd to SLTST,tr micmic,com carb spks,sft frm, amrph-sbblky.

SANDSTONE:off wh,lt-med gry, grnsh gry,vf-med,occ crs grns, mod srtd,sbang-sbrnd,sil cmt, com arg mtx,com carb mat,rr micmic,no fluor.

WOB: 5-10 klbs
RPM: 45-160
SPP: 1000-1100 psi
FLOW: 475-530 gpm

25 50
10 20
20 60

10K 100K
10 100

100 1K 10K

NO GAS

NO GAS

MW:8.9
 FV:22
 PV:9
 YP:10
 GEL:27
 WL:-
 SOL:3.9
 pH:8.6
 CL:2000
 KCL:-

WOB: 5-10 klbs
 RPM: 45-160
 SPP: 1000-1100 psi
 FLOW: 500-550 gpm

07/08/2007

WOB: 4-10 klbs
 RPM: 80-155
 SPP: 550-650 psi
 FLOW: 400-410 gpm

MW:8.6
 FV:Water
 PV:-
 YP:-
 GEL:-
 WL:-
 SOL:0.6
 pH:9.0
 CL:18,000
 KCL:3.7

190
 200
 210
 220
 230
 240
 250
 260
 270

NO GAS

NO GAS

NO GAS

10K 100K
 10 100

100 1K 10K

9.625" CASING SHOE DEPTH @ 198.83m

8.50" HOLE @ 202m

BIT#2: REED PDC DSX419S
 SIZE: 8.5" JETS: 4X16
 IN: 202m OUT: 1524m
 RUN: 1322m HRS: 46.5
 COND: 2-1-CT-N-X-1-TR-TD

SANDSTONE: lt med gry, lt grnsh gry, f-med grn, mod-pr srtd, sbang, silc cmt, rr arg mtx, com liths, mnr felds, com glauc, rr carb mat, pred lse, mnr fri, pr vis por, fr inf por, no show.

SILTSTONE: med gry-med dk gry, grnsh gry, arg, aren i/p, sft, amrph-sbbiky.

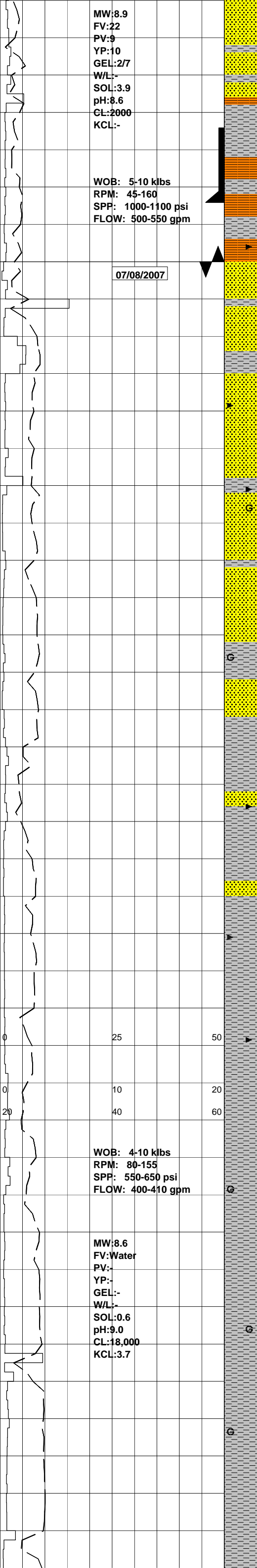
SURVEY @ 235m
 INC: 0.50° AZI: 160°

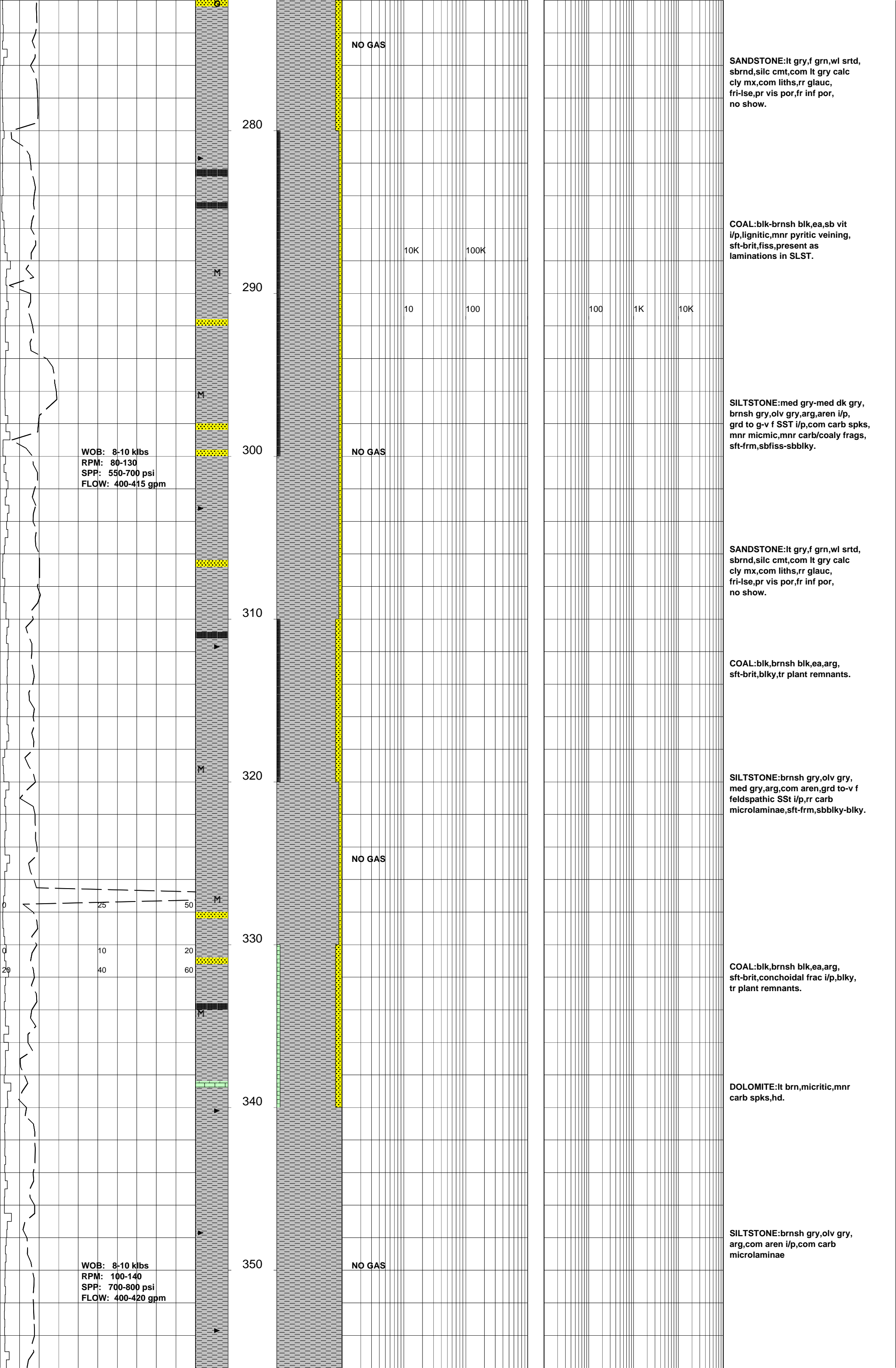
SANDSTONE: med dk gry, dk grnsh gry, f-med grn, pr srtd, sbrnd, silc cmt, mnr-abdnt i/p arg mtx, calc i/p, abdnt rd grn & brn liths, glauc i/p, mnr felds, com carb/coaly frags, pred lse, mnr fri, pr vis por, no fluor.

SILTSTONE: med gry-med dk gry, grnsh gry, arg, aren i/p, sft, amrph-sbbiky.

SILTSTONE: brnsh gry, olv gry, arg, mnr carb/coaly frags, rr brn mica, tr glauc, sft-frm, blkly.

SILTSTONE: brnsh gry, olv gry, arg, mnr carb/coaly frags, rr brn mica, tr glauc, sft-frm, blkly.





280
290
300
310
320
330
340
350

NO GAS
NO GAS
NO GAS
NO GAS
NO GAS
NO GAS
NO GAS

SANDSTONE:lt gry,f grn,wl srted, sbrnd,silc cmt,com lt gry calc cly mx,com liths,rr glauc, fri-lse,pr vis por,fr inf por, no show.

COAL:blk-brnsh blk,ea,sb vit i/p,lignitic,mnr pyritic veining, sft-brit,fiss,present as laminations in SLST.

SILTSTONE:med gry-med dk gry, brnsh gry,olv gry,arg,aren i/p, grd to g-v f SST i/p,com carb spks, mnr micmic,mnr carb/coaly frags, sft-frm,sbfiss-sbblky.

SANDSTONE:lt gry,f grn,wl srted, sbrnd,silc cmt,com lt gry calc cly mx,com liths,rr glauc, fri-lse,pr vis por,fr inf por, no show.

COAL:blk,brnsh blk,ea,arg, sft-brit,blk, tr plant remnants.

SILTSTONE:brnsh gry,olv gry, med gry,arg,com aren,grd to-v f feldspathic SSt i/p,rr carb microlaminae,sft-frm,sbblky-blky.

COAL:blk,brnsh blk,ea,arg, sft-brit,conchoidal frac i/p,blk, tr plant remnants.

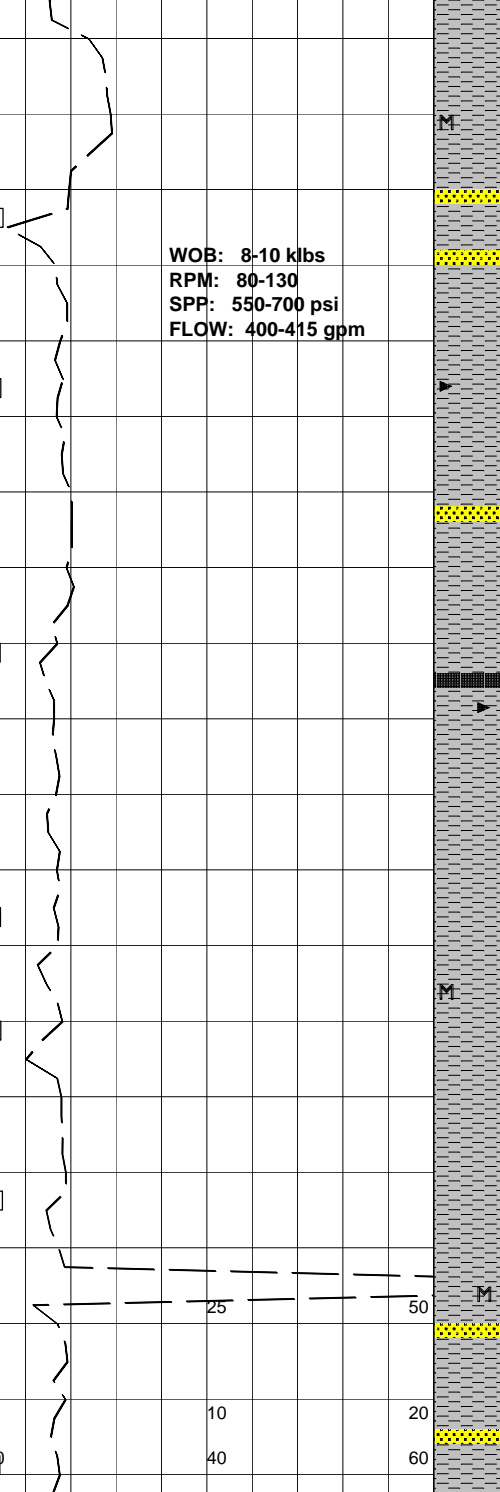
DOLOMITE:lt brn,micritic,mnr carb spks,hd.

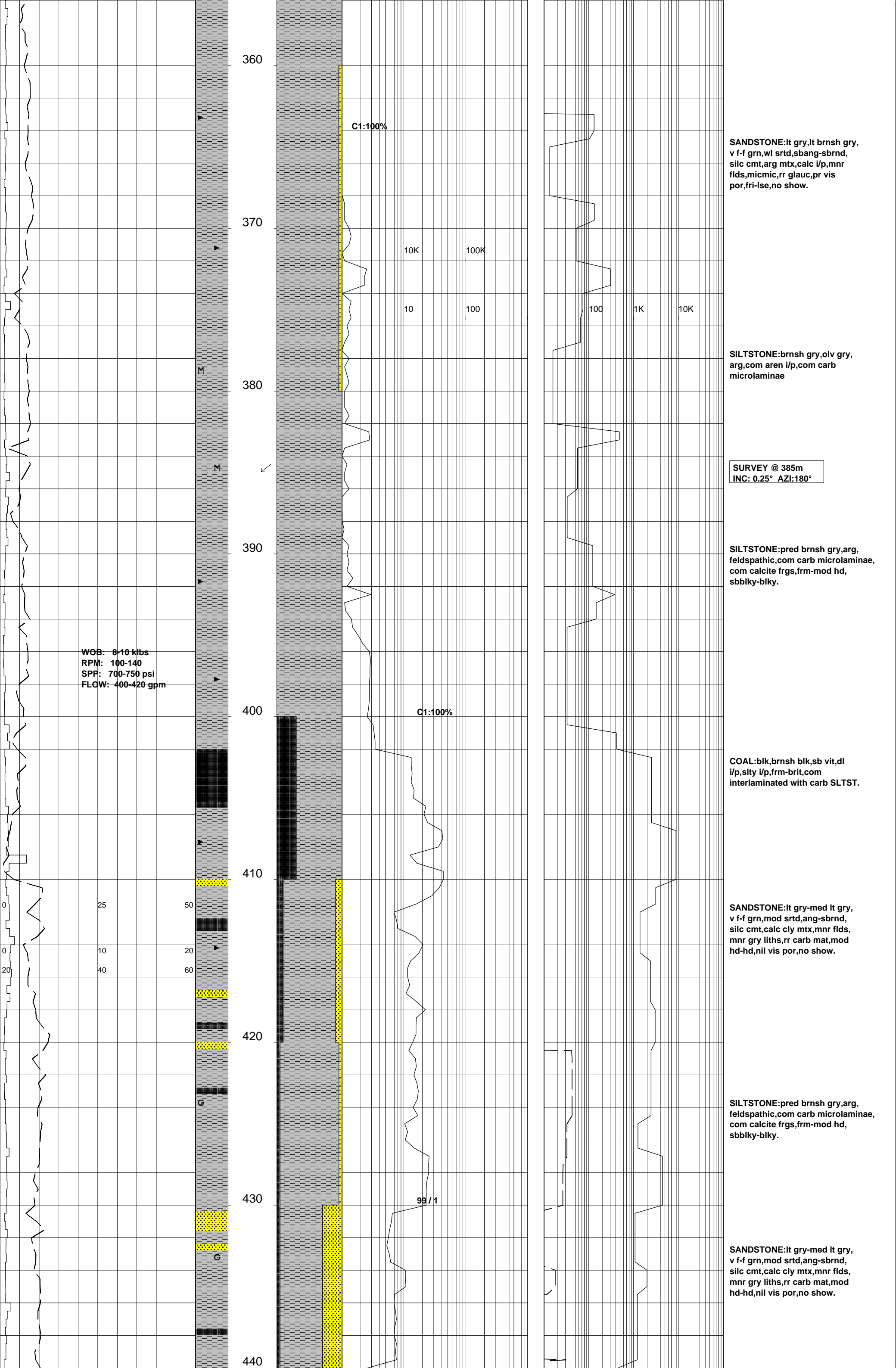
SILTSTONE:brnsh gry,olv gry, arg,com aren i/p,com carb microlaminae

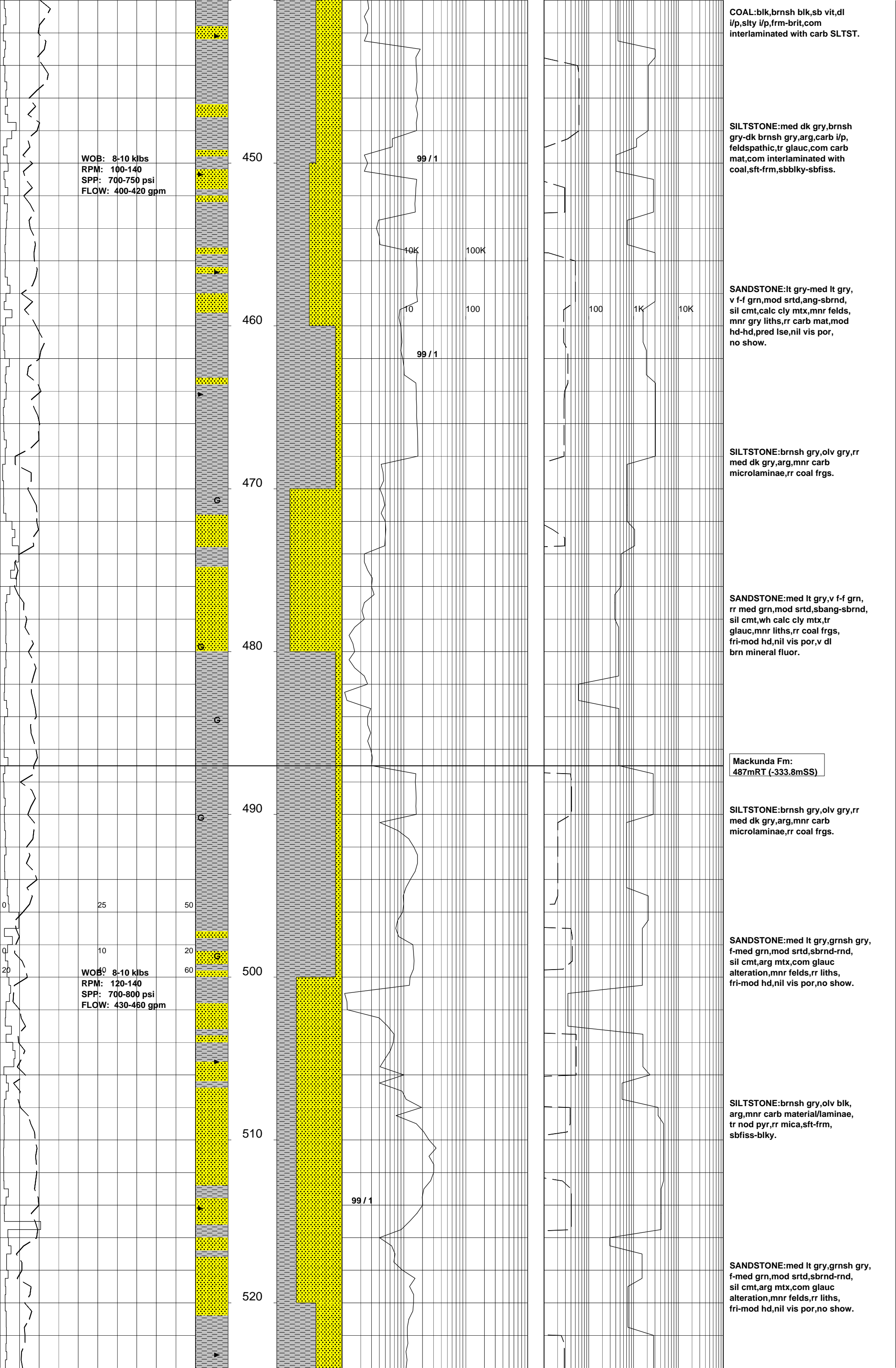
10K 100K
10 100 100 1K 10K

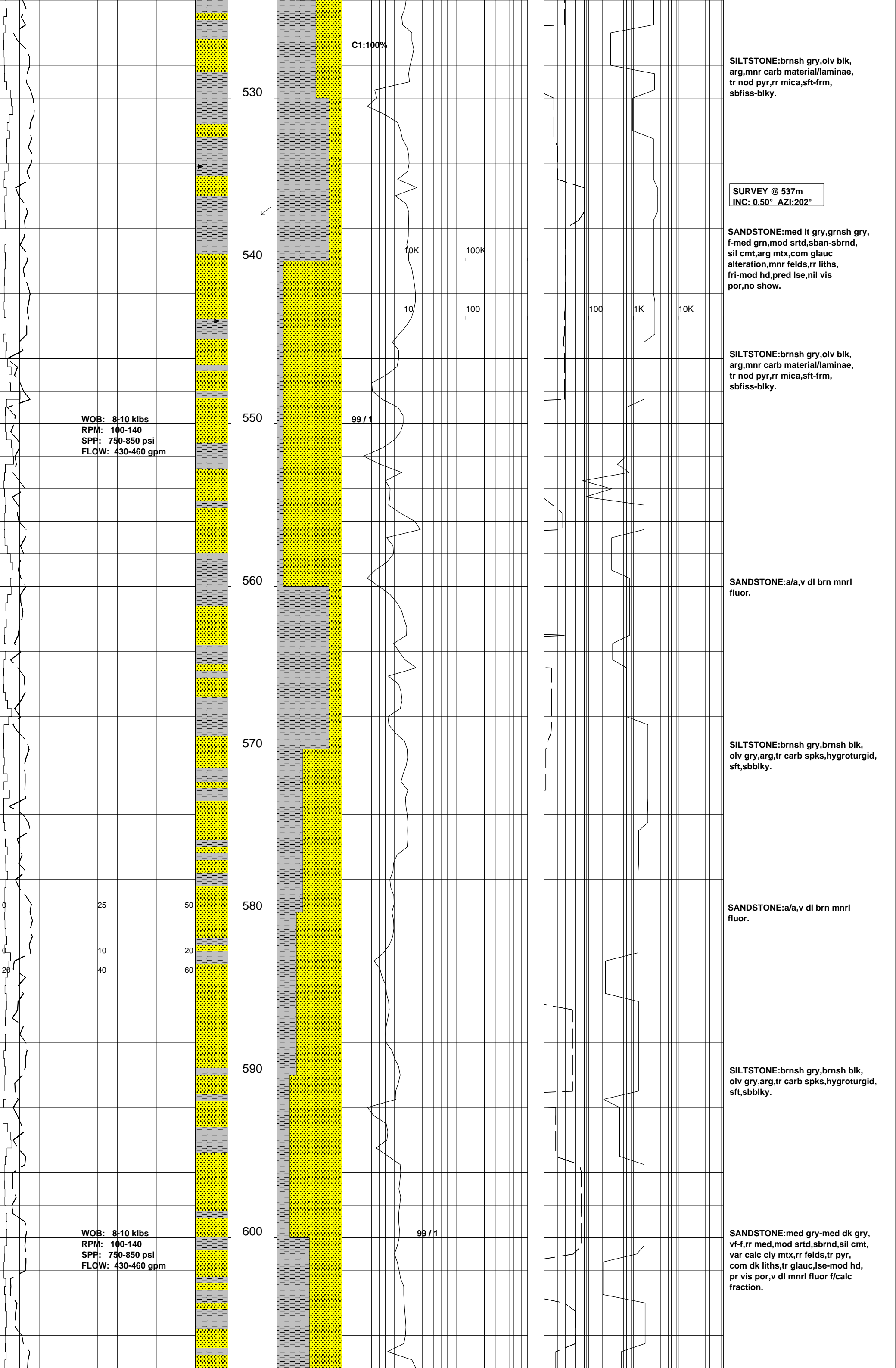
WOB: 8-10 klbs
RPM: 80-130
SPP: 550-700 psi
FLOW: 400-415 gpm

WOB: 8-10 klbs
RPM: 100-140
SPP: 700-800 psi
FLOW: 400-420 gpm









C1:100%

530

SILTSTONE:brnsh gry,olv blk, arg,mnr carb material/laminae, tr nod pyr,rr mica,sft-frm, sbfiss-blky.

SURVEY @ 537m
INC: 0.50° AZI:202°

540

SANDSTONE:med lt gry,grnsh gry, f-med grn,mod srtd,sban-sbrnd, sil cmt,arg mtx,com glauc alteration,mnr felds,rr liths, fri-mod hd,pred lse,nil vis por,no show.

10K 100K
10 100

100 1K 10K

SILTSTONE:brnsh gry,olv blk, arg,mnr carb material/laminae, tr nod pyr,rr mica,sft-frm, sbfiss-blky.

WOB: 8-10 klbs
RPM: 100-140
SPP: 750-850 psi
FLOW: 430-460 gpm

550

99 / 1

560

SANDSTONE:a/a,v dl brn mnrl fluor.

570

SILTSTONE:brnsh gry,brnsh blk, olv gry,arg,tr carb spks,hygroturgid, sft,sbblky.

580

SANDSTONE:a/a,v dl brn mnrl fluor.

25 50
10 20
40 60

590

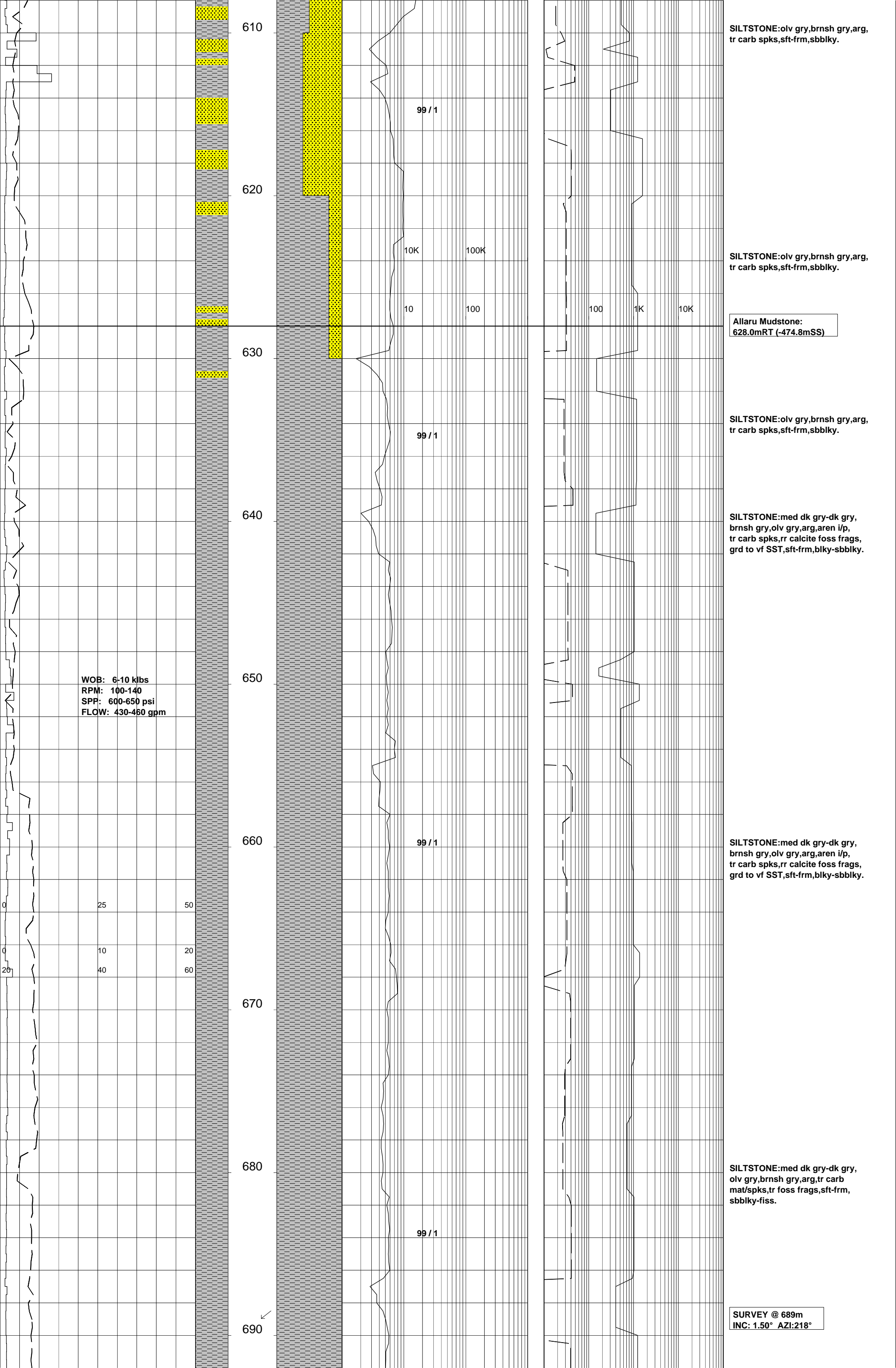
SILTSTONE:brnsh gry,brnsh blk, olv gry,arg,tr carb spks,hygroturgid, sft,sbblky.

WOB: 8-10 klbs
RPM: 100-140
SPP: 750-850 psi
FLOW: 430-460 gpm

600

99 / 1

SANDSTONE:med gry-med dk gry, vf-f,rr med,mod srtd,sbrnd,sil cmt, var calc cly mtx,rr felds,tr pyr, com dk liths,tr glauc,lse-mod hd, pr vis por,v dl mnrl fluor f/calc fraction.



SILTSTONE: olv gry, brnsh gry, arg, tr carb spks, sft frm, sbbly.

99 / 1

SILTSTONE: olv gry, brnsh gry, arg, tr carb spks, sft frm, sbbly.

10K

100K

10

100

100

1K

10K

Allaru Mudstone:
628.0mRT (-474.8mSS)

SILTSTONE: olv gry, brnsh gry, arg, tr carb spks, sft frm, sbbly.

99 / 1

SILTSTONE: med dk gry-dk gry, brnsh gry, olv gry, arg, aren i/p, tr carb spks, rr calcite foss frags, grd to vf SST, sft frm, blkly-sbbly.

WOB: 6-10 klbs
RPM: 100-140
SPP: 600-650 psi
FLOW: 430-460 gpm

SILTSTONE: med dk gry-dk gry, brnsh gry, olv gry, arg, aren i/p, tr carb spks, rr calcite foss frags, grd to vf SST, sft frm, blkly-sbbly.

99 / 1

0	25	50
0	10	20
20	40	60

SILTSTONE: med dk gry-dk gry, olv gry, brnsh gry, arg, tr carb mat/spks, tr foss frags, sft frm, sbbly-fiss.

99 / 1

SURVEY @ 689m
INC: 1.50° AZI: 218°

690 ↙

WOB: 7-10 klbs
RPM: 120-150
SPP: 600-650 psi
FLOW: 400-420 gpm

08/08/2007

MW:8.8
FV:29
PV:-
YP:-
GEL:-
WL:-
SOL:2.0
pH:9.0
CL:20,000
KCL:4.0

700

710

720

730

740

750

760

770

10K

100K

99 / 1

10

100

100

1K

10K

97 / 3 / Tr

98 / 2

98 / 2

25

50

WOB: 7-10 klbs
RPM: 100-150
SPP: 460-550 psi
FLOW: 400-410 gpm

20

60

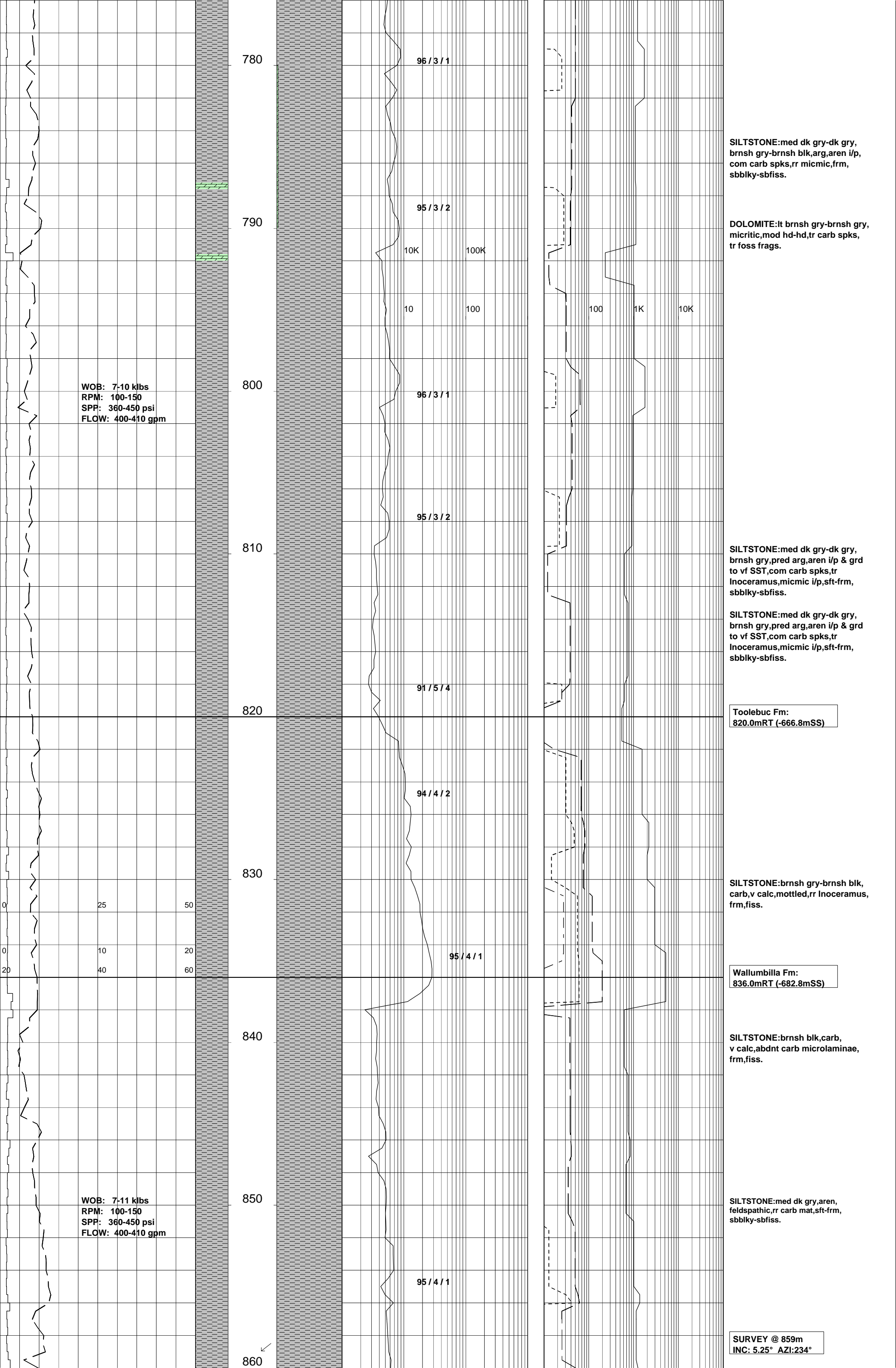
SILTSTONE: med dk gry-dk gry, olv gry, brnsh gry, arg, tr carb mat/spks, tr foss frags, sft frm, sbblky-fiss.

SILTSTONE: med dk gry-dk gry, olv gry, brnsh gry, arg, tr carb mat/spks, tr foss frags, sft frm, sbblky-fiss.

SILTSTONE: med dk gry-dk gry, olv gry, brnsh gry, arg, tr carb mat/spks, tr foss frags, mnr micmic, sft frm, sbblky-fiss.

SILTSTONE: med dk gry-dk gry, brnsh gry-brnsh blk, arg, aren i/p, com carb spks, rr micmic, frm, sbblky-sbfiss.

LIMESTONE: (Tr) brnsh gry, micritic, mnr nod pyr, hd.



780

96/3/1

SILTSTONE: med dk gry-dk gry, brnsh gry-brnsh blk, arg, aren i/p, com carb spks, rr micmic, frm, sbbiky-sbfiss.

790

95/3/2

DOLOMITE: lt brnsh gry-brnsh gry, micritic, mod hd-hd, tr carb spks, tr foss frags.

10K 100K

10 100

100 1K 10K

WOB: 7-10 klbs
RPM: 100-150
SPP: 360-450 psi
FLOW: 400-410 gpm

800

96/3/1

810

95/3/2

SILTSTONE: med dk gry-dk gry, brnsh gry, pred arg, aren i/p & grd to vf SST, com carb spks, tr Inoceramus, micmic i/p, sft-frm, sbbiky-sbfiss.

SILTSTONE: med dk gry-dk gry, brnsh gry, pred arg, aren i/p & grd to vf SST, com carb spks, tr Inoceramus, micmic i/p, sft-frm, sbbiky-sbfiss.

820

91/5/4

Toolebuc Fm:
820.0mRT (-666.8mSS)

830

94/4/2

SILTSTONE: brnsh gry-brnsh blk, carb, v calc, mottled, rr Inoceramus, frm, fiss.

0 25 50

0 10 20

20 40 60

95/4/1

Wallumbilla Fm:
836.0mRT (-682.8mSS)

840

SILTSTONE: brnsh blk, carb, v calc, abdnt carb microlaminae, frm, fiss.

WOB: 7-11 klbs
RPM: 100-150
SPP: 360-450 psi
FLOW: 400-410 gpm

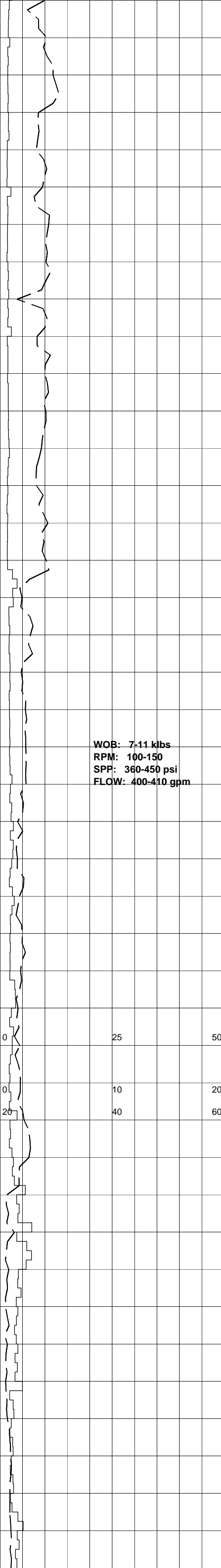
850

95/4/1

SILTSTONE: med dk gry, aren, feldspathic, rr carb mat, sft-frm, sbbiky-sbfiss.

860

SURVEY @ 859m
INC: 5.25° AZI: 234°



WOB: 7-11 klbs
 RPM: 100-150
 SPP: 360-450 psi
 FLOW: 400-410 gpm

870

95 / 4 / 1

10K 100K

880

10 GAS TRAP FAILURE

100 1K 10K

890

93 / 4 / 2 / 1

900

SILTSTONE: med dk gry-dk gry,
 arg, tr glauc, rr carb spks, com
 micmic, sft-frm, sbblky-sbfiss.

SURVEY @ 906m
 INC: 5.25° AZI: 235°

910

94 / 4 / 1 / 1

SILTSTONE: med dk gry-dk gry,
 arg, tr glauc, rr carb spks, com
 micmic, sft-frm, sbblky-sbfiss.

920

CARBIDE LAG CHECK @ 922m
 THEOR STRKS: 1200
 ACT STRKS: 1200
 OPEN HOLE OG: 0%
 T GAS: 142U

930

94 / 6

SILTSTONE: med dk gry-dk gry,
 arg, tr glauc, rr carb spks, com
 micmic, sft-frm, sbblky-sbfiss.

940

97 / 2 / 1

SILTSTONE: med dk gry-dk gry,
 arg, tr glauc, rr carb spks, com
 micmic, sft-frm, sbblky-sbfiss.

SILTSTONE: med dk gry, arg,
 tr micmic, sft-frm, sbblky-blky,
 fiss i/p.

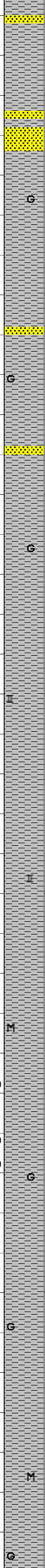
SILTSTONE: med dk gry, arg,
 tr micmic, sft-frm, sbblky-blky,
 fiss i/p.

SILTSTONE: med dk gry, arg,
 tr micmic, sft-frm, sbblky-blky,
 fiss i/p.

WOB: 2-10 klbs
RPM: 100-150
SPP: 650-850 psi
FLOW: 395-400 gpm

WOB: 3-5 klbs
RPM: 100-150
SPP: 650-850 psi
FLOW: 395-400 gpm

MW:9.4
FV:34
PV:9
YP:7
GEL:1/2
WL:12
SOL:6.1
pH:9.0
CL:22,000
KCL:4.5



950
960
970
980
990
1000
1010
1020

88 / 11 / 1

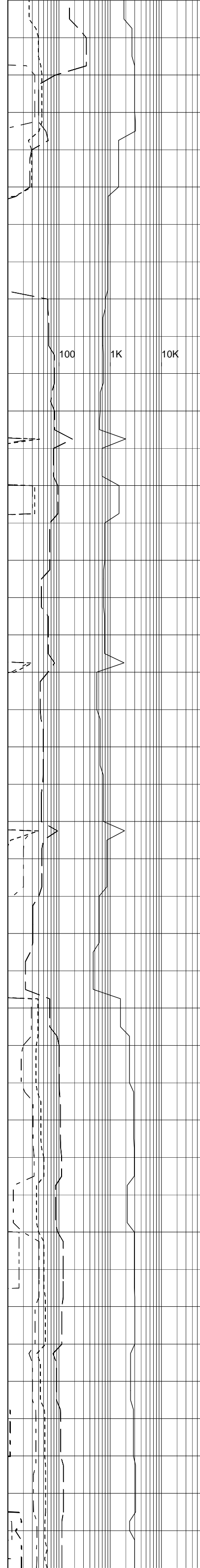
97 / 1 / 1 / 1

90 / 10

90 / 10

95 / 3 / 1 / 1 / 1

10K 100K
10 100 1K 10K



SANDSTONE: med gry, grnsh gry, vf, wl srted, sil cmt, arg mtx, mnr glauc, rr flds, interlam w/& grd to SLTST, fri-mod hd, ti-pr vis por, no show

SURVEY @ 956m
INC: 4.25° AZI: 236°

SILTSTONE: med dk gry, brnsh gry, olv gry, arg, aren i/p, micmic, rr carb spks, rr calcite/foss frags, sft, sbblky

SANDSTONE: med gry, grnsh gry, vf, mod srted, sbang-sbrnd, sil cmt, arg mtx, mnr glauc, rr felds, interlam w/& grd to SLTST, fri-mod hd, lse- f-med grn, pr-ti vis por, fr inf por, no show

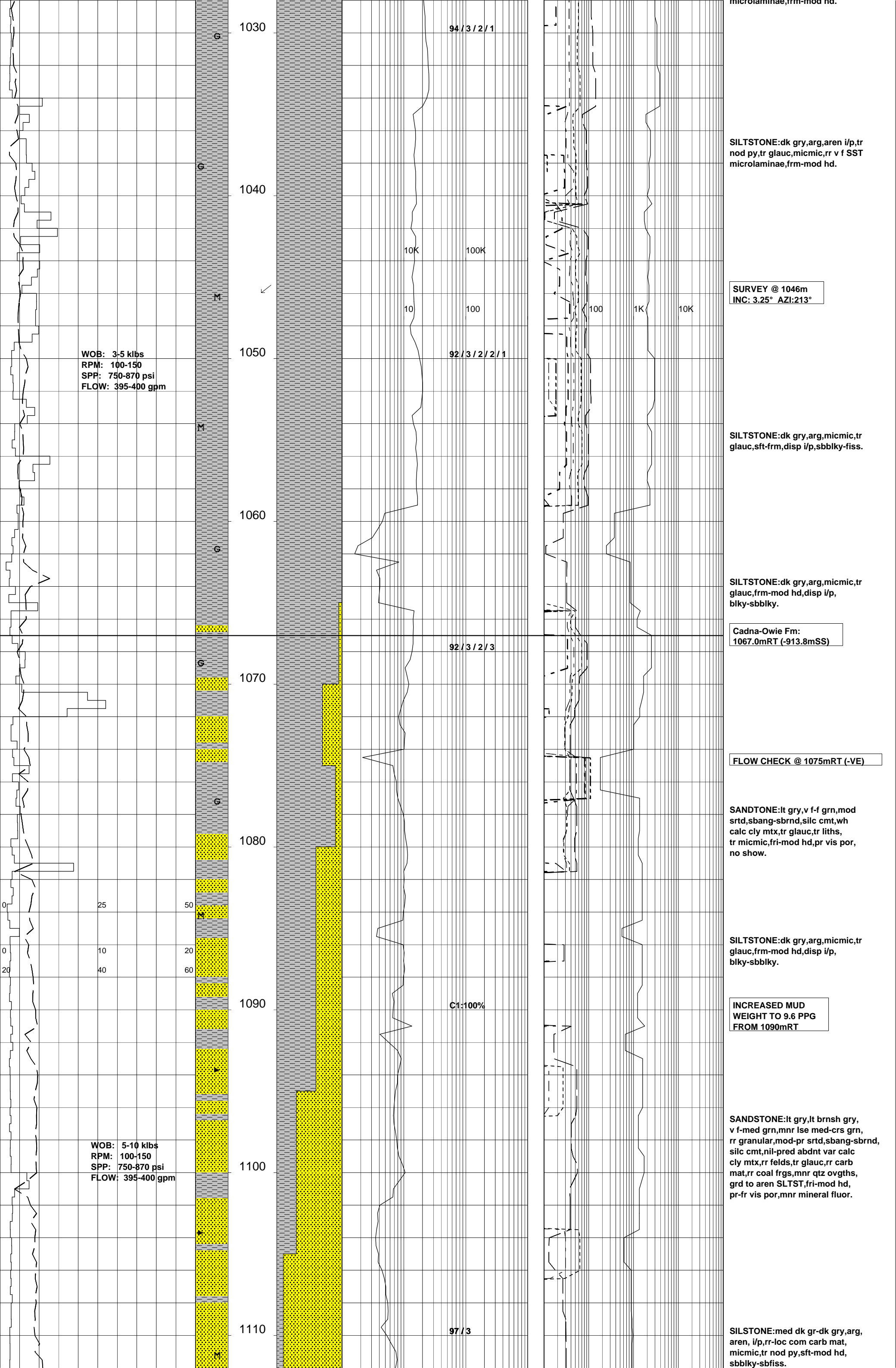
SILTSTONE: dk gry, arg, micmic, tr inoceramus, aren i/p, frm-mod hd, sbfiss.

SILTSTONE: dk gry, arg, micmic, tr inoceramus, aren i/p, frm-mod hd, sbfiss.

SILTSTONE: dk gry, arg, micmic, tr inoceramus, aren i/p, frm-mod hd, sbfiss.

SILTSTONE: dk gry, arg, micmic, tr inoceramus, aren i/p, frm-mod hd, sbfiss.

SILTSTONE: dk gry, arg, aren i/p, tr nod py, tr glauc, micmic, rr v f SST microlaminar frm mod hd



microlaminae,rrm-mod hd.

SILTSTONE:dk gry,arg,aren i/p,tr nod py,tr glauc,micmic,rr v f SST microlaminae,frm-mod hd.

SURVEY @ 1046m
INC: 3.25° AZI:213°

SILTSTONE:dk gry,arg,micmic,tr glauc,sft-frm,disp i/p,sbblky-fiss.

SILTSTONE:dk gry,arg,micmic,tr glauc,frm-mod hd,disp i/p, blky-sbblky.

Cadna-Owie Fm:
1067.0mRT (-913.8mSS)

FLOW CHECK @ 1075mRT (-VE)

SANDTONE:lt gry,v f-f grn,mod srted,sbang-sbrnd,silc cmt,wh calc cly mtx,tr glauc,tr liths, tr micmic,fri-mod hd,pr vis por, no show.

SILTSTONE:dk gry,arg,micmic,tr glauc,frm-mod hd,disp i/p, blky-sbblky.

INCREASED MUD WEIGHT TO 9.6 PPG FROM 1090mRT

SANDSTONE:lt gry,lt brnsh gry, v f-med grn,mnr lse med-crs grn, rr granular,mod-pr srted,sbang-sbrnd, silc cmt,nil-pred abndnt var calc cly mtx,rr felds,tr glauc,rr carb mat,rr coal frgs,mnr qtz ovgths, grd to aren SLTST,fri-mod hd, pr-fr vis por,mnr mineral fluor.

SILTSTONE:med dk gr-dk gry,arg, aren, i/p,rr-loc com carb mat, micmic,tr nod py,sft-mod hd, sbblky-sbfiss.

WOB: 3-5 klbs
RPM: 100-150
SPP: 750-870 psi
FLOW: 395-400 gpm

WOB: 5-10 klbs
RPM: 100-150
SPP: 750-870 psi
FLOW: 395-400 gpm

94/3/2/1

92/3/2/2/1

92/3/2/3

C1:100%

97/3

1030

1040

1050

1060

1070

1080

1090

1100

1110

10K

100K

10

100

100

1K

10K

0

0

20

25

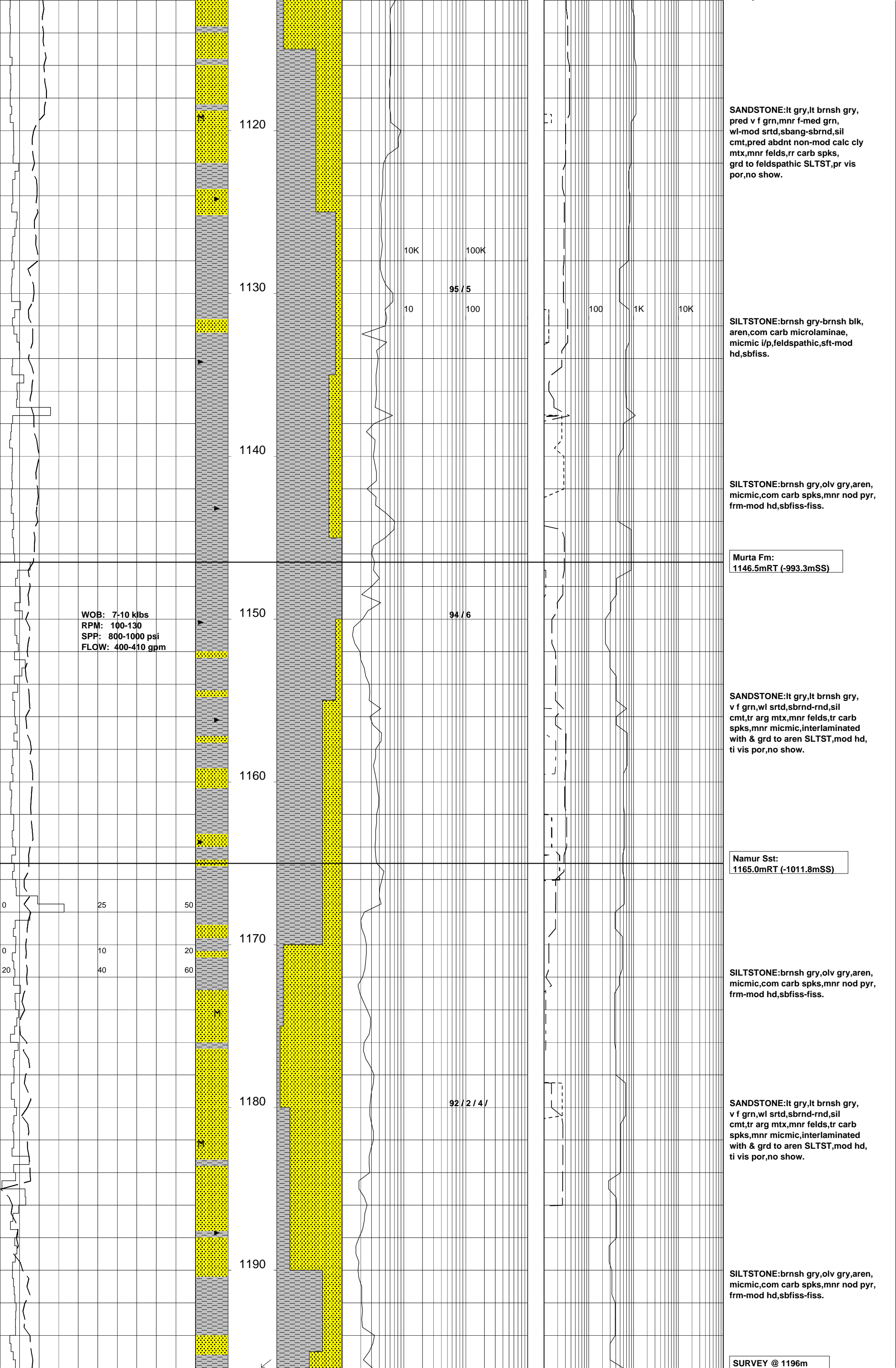
10

40

50

20

60



SANDSTONE:lt gry,lt brnsh gry, pred v f grn,mnr f-med grn, wl-mod srted,sbang-sbrnd,sil cmt,pred abdnt non-mod calc cly mtx,mnr felds,rr carb spks, grd to feldspathic SLTST,pr vis por,no show.

SILTSTONE:brnsh gry-brnsh blk, aren,com carb microlaminae, micmic i/p,feldspathic,sft-mod hd,sbfiss.

SILTSTONE:brnsh gry,olv gry,aren, micmic,com carb spks,mnr nod pyr, frm-mod hd,sbfiss-fiss.

Murta Fm:
1146.5mRT (-993.3mSS)

SANDSTONE:lt gry,lt brnsh gry, v f grn,wl srted,sbrnd-rnd,sil cmt,tr arg mtx,mnr felds,tr carb spks,mnr micmic,interlaminated with & grd to aren SLTST,mod hd, ti vis por,no show.

Namur Sst:
1165.0mRT (-1011.8mSS)

SILTSTONE:brnsh gry,olv gry,aren, micmic,com carb spks,mnr nod pyr, frm-mod hd,sbfiss-fiss.

SANDSTONE:lt gry,lt brnsh gry, v f grn,wl srted,sbrnd-rnd,sil cmt,tr arg mtx,mnr felds,tr carb spks,mnr micmic,interlaminated with & grd to aren SLTST,mod hd, ti vis por,no show.

SILTSTONE:brnsh gry,olv gry,aren, micmic,com carb spks,mnr nod pyr, frm-mod hd,sbfiss-fiss.

SURVEY @ 1196m

WOB: 7-10 klbs
RPM: 100-130
SPP: 900-1050 psi
FLOW: 400-410 gpm

MW:9.5
FV:39
PV:17
YP:13
GEL:1/7
WL:7.4
SOL:6.7
pH:9.0
CL:23,000
KCL:4.8

WOB: 3-8 klbs
RPM: 100-130
SPP: 900-1050 psi
FLOW: 400-410 gpm

0 10 20 30 40 50 60

1200
1210
1220
1230
1240
1250
1260
1270
1280

96 / 4

10K 100K

10 100

95 / 5

94 / 3 / 3

90 / 3 / 3 / 3 / 1

SANDSTONE:lt gry,lt brnsh gry, v f grn,wl srtd,sbrnd-rnd,sil cmt,tr arg mtx,mnr felds,tr carb spks,mnr micmic,interlaminated with & grd to aren SLTST,mod hd, ti vis por,no show.

SANDSTONE:med lt gry,vf-med, pr srtd,sbang-sbrnd,sil cmt,mnr-abdnt calc cly mtx,interlam /SLTST, rr carb mat/lam,rr felds,lse-mod hd, pr vis por,no show.

SILTSTONE:med dk gry-brnsh gry, aren,micmic,com carb lam,rr sndy lam,frm-mod hd,sbblky-sbfiss.

SANDSTONE:lt gry-med lt gry, trnsI,trnsp,f-med,mod srtd,sbang-sbrnd,sil cmt,com var calc wh cly mtx,rr carb lam,rr COAL frags,tr qtz ovrgths,rr weathered flds, lse-mod hd,pr vis por,no show.

SILTSTONE:med dk gry-brnsh gry, aren,micmic,com carb lam,rr sndy lam,frm-mod hd,sbblky-sbfiss.

SANDSTONE:lt gry-med lt gry, trnsp,trnsI,pred f-med,rr crs, mod srtd,ang-sbrnd,sil cmt,com wh calc cly mtx,rr carb & stly lam, tr liths,tr glauc,lse-fri,pr vis por,no show.

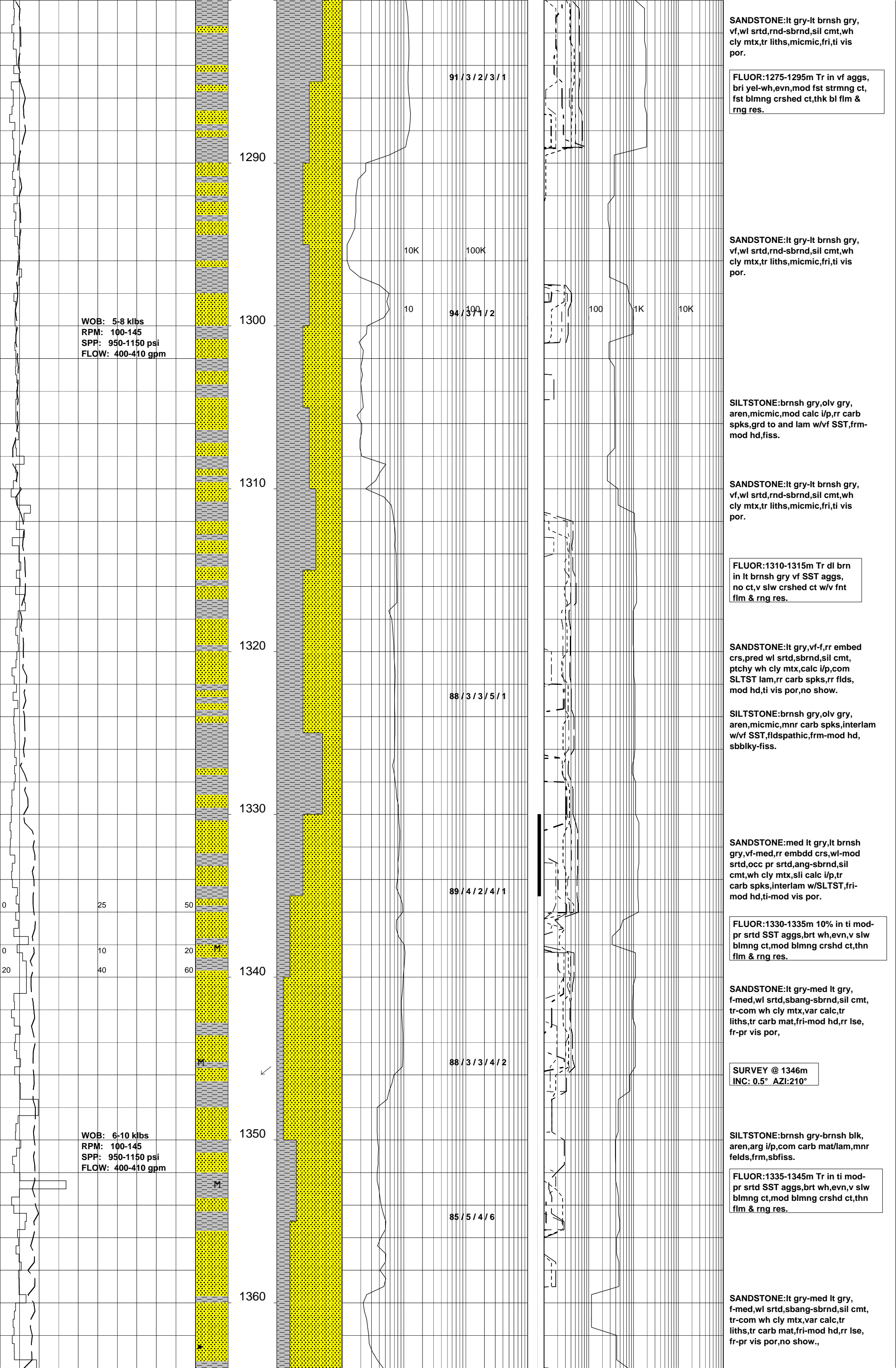
SILTSTONE:med dk gry-brnsh gry, aren,micmic,com carb lam,rr sndy lam,frm-mod hd,sbblky-sbfiss.

SANDSTONE:trnsI,trnsp,lt gry-med lt gry,f-pred med,rr crs, mod srtd,sbang-sbrnd,sil cmt, com wh calc cly mtx i/p,tr carb lam,tr felds,pred lse,rr fri,pr vis por,gd inf por,no show.

Westbourne Fm:
1268.0mRT (-1114.8mSS)

SILTSTONE:med dk gry-brnsh gry, aren,micmic,com carb lam,rr sndy lam,frm-mod hd,sbblky-sbfiss.

SILTSTONE:brnsh gry,olv gry, aren,micmic,mod calc i/p,rr carb spks,grd to lam w/vf SST,frm-mod hd,fiss.



SANDSTONE:lt gry-lt brnsh gry, vf,wl srted,rnd-sbrnd,sil cmt,wh cly mtx,tr liths,micmic,fri,ti vis por.

FLUOR:1275-1295m Tr in vf aggs, bri yel-wh,evn,mod fst strmg ct, fst blmg crshed ct,thk bl flm & rng res.

SANDSTONE:lt gry-lt brnsh gry, vf,wl srted,rnd-sbrnd,sil cmt,wh cly mtx,tr liths,micmic,fri,ti vis por.

SILTSTONE:brnsh gry,olv gry, aren,micmic,mod calc i/p,rr carb spks,grd to and lam w/vf SST,frm-mod hd,fiss.

SANDSTONE:lt gry-lt brnsh gry, vf,wl srted,rnd-sbrnd,sil cmt,wh cly mtx,tr liths,micmic,fri,ti vis por.

FLUOR:1310-1315m Tr dl brn in lt brnsh gry vf SST aggs, no ct,v slw crshed ct w/v fnt flm & rng res.

SANDSTONE:lt gry,vf-f,rr embed crs,pred wl srted,sbrnd,sil cmt, ptchy wh cly mtx,calc i/p,com SLTST lam,rr carb spks,rr flds, mod hd,ti vis por,no show.

SILTSTONE:brnsh gry,olv gry, aren,micmic,mnr carb spks,interlam w/vf SST,fldspathic,frm-mod hd, sbbkly-fiss.

SANDSTONE:med lt gry,lt brnsh gry,vf-med,rr embdd crs,wl-mod srted,occ pr srted,ang-sbrnd,sil cmt,wh cly mtx,sli calc i/p,tr carb spks,interlam w/SLTST,fri-mod hd,ti-mod vis por.

FLUOR:1330-1335m 10% in ti mod-pr srted SST aggs,brt wh,evn,v slw blmg ct,mod blmg crshed ct,thn flm & rng res.

SANDSTONE:lt gry-med lt gry, f-med,wl srted,sbang-sbrnd,sil cmt, tr-com wh cly mtx,var calc,tr liths,tr carb mat,fri-mod hd,rr lse, fr-pr vis por,

SURVEY @ 1346m
INC: 0.5° AZI:210°

SILTSTONE:brnsh gry-brnsh blk, aren,arg i/p,com carb mat/lam,mnr felds,frm,sbfiss.

FLUOR:1335-1345m Tr in ti mod-pr srted SST aggs,brt wh,evn,v slw blmg ct,mod blmg crshed ct,thn flm & rng res.

SANDSTONE:lt gry-med lt gry, f-med,wl srted,sbang-sbrnd,sil cmt, tr-com wh cly mtx,var calc,tr liths,tr carb mat,fri-mod hd,rr lse, fr-pr vis por,no show.,

WOB: 5-8 klbs
RPM: 100-145
SPP: 950-1150 psi
FLOW: 400-410 gpm

WOB: 6-10 klbs
RPM: 100-145
SPP: 950-1150 psi
FLOW: 400-410 gpm

91 / 3 / 2 / 3 / 1

94 / 3 / 1 / 2

88 / 3 / 3 / 5 / 1

89 / 4 / 2 / 4 / 1

88 / 3 / 3 / 4 / 2

85 / 5 / 4 / 6

1290

1300

1310

1320

1330

1340

1350

1360

10K

100K

10

100

100

1K

10K

0

25

50

0

10

20

20

40

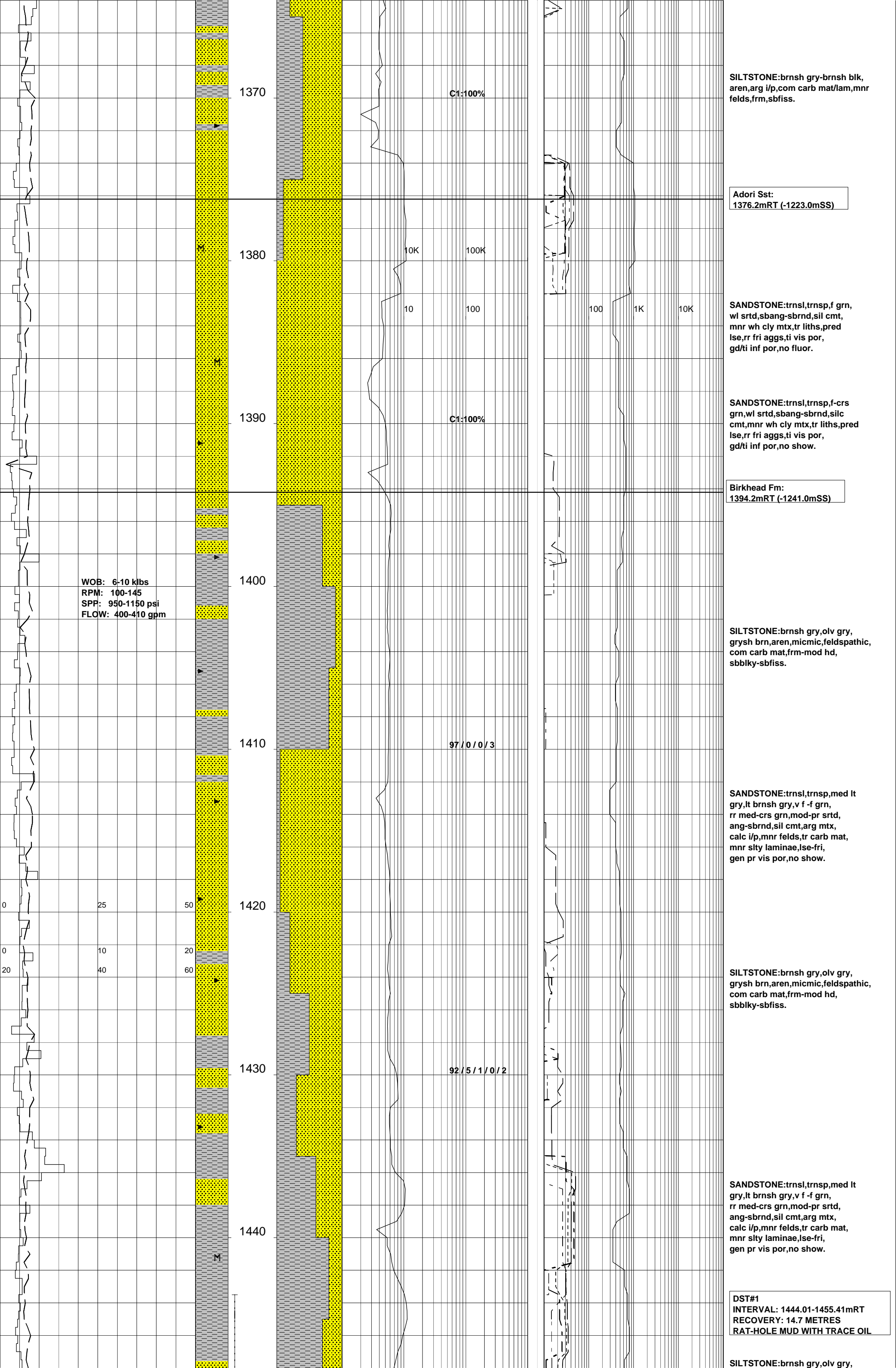
60

M

M

M

M



SILTSTONE:brnsh gry-brnsh blk, aren, arg i/p, com carb mat/lam, mnr felds, frm, sbfiss.

Adori Sst:
1376.2mRT (-1223.0mSS)

SANDSTONE:trnsl, trnsp, f grn, wl srtd, sbang-sbrnd, sil cmt, mnr wh cly mtx, tr liths, pred lse, rr fri aggs, ti vis por, gd/ti inf por, no fluor.

SANDSTONE:trnsl, trnsp, f-crs grn, wl srtd, sbang-sbrnd, silc cmt, mnr wh cly mtx, tr liths, pred lse, rr fri aggs, ti vis por, gd/ti inf por, no show.

Birkhead Fm:
1394.2mRT (-1241.0mSS)

SILTSTONE:brnsh gry, olv gry, grysh brn, aren, micmic, feldspathic, com carb mat, frm-mod hd, sbbky-sbfiss.

SANDSTONE:trnsl, trnsp, med lt gry, lt brnsh gry, v f-f grn, rr med-crs grn, mod-pr srtd, ang-sbrnd, sil cmt, arg mtx, calc i/p, mnr felds, tr carb mat, mnr slty laminae, lse-fri, gen pr vis por, no show.

SILTSTONE:brnsh gry, olv gry, grysh brn, aren, micmic, feldspathic, com carb mat, frm-mod hd, sbbky-sbfiss.

SANDSTONE:trnsl, trnsp, med lt gry, lt brnsh gry, v f-f grn, rr med-crs grn, mod-pr srtd, ang-sbrnd, sil cmt, arg mtx, calc i/p, mnr felds, tr carb mat, mnr slty laminae, lse-fri, gen pr vis por, no show.

DST#1
INTERVAL: 1444.01-1455.41mRT
RECOVERY: 14.7 METRES
RAT-HOLE MUD WITH TRACE OIL

SILTSTONE:brnsh gry, olv gry,

WOB: 6-10 klbs
RPM: 100-145
SPP: 950-1150 psi
FLOW: 400-410 gpm

C1:100%

C1:100%

97/0/0/3

92/5/1/0/2

1370

1380

1390

1400

1410

1420

1430

1440

10K

100K

10

100

100

1K

10K

0

25

50

0

10

20

20

40

60

WOB: 6-10 klbs
RPM: 100-120
SPP: 950-1150 psi
FLOW: 380-400 gpm

1450
1460
1470
1480
1490
1500
1510
1520
1530

81/4/4/7/4

64/6/7/12/11 100K

68/3/5/12/12

72/3/4/8/13

81/3/3/7/6

86/1/0/7/6

grysh brn,aren,micmic,occ brnsh
blk,feldspathic,com carb mat,
frm-mod hd,sbbkly-sbfiss.

DST#2
INTERVAL: 1455.02-1459.07mRT
STATUS:MIS-RUN

Hutton Sst:
1455.8mRT (-1302.6mSS)

DST#3
INTERVAL: 1455.22-1459.95mRT
RECOVERY: 8.5 BBLS OIL
9.2 BBLS MUDDY WATER

OLIFEROUS ODOUR AT SHKS

SANDSTONE:trnsl,trnsp,lt brnsh
gry,f-med grn,wl srtd,sbang-sbrnd,
sil cmt,mnr aggs with variably
calc cly mtx,tr quartzose liths,
tr carb mat,pred lse,20% fri aggs,
pr-fr vis por,gd inf por.

FLUOR: (1450-1470m) 10-50% bri
yel-wh in f-med grn aggs with
variable mtx,occ dl overall fluor
from lse sand,mod-fst blmg cut,
with blmg/stmg c/c,thn-thk
film & r/r.

RIG PUMP FAILURE @ 147mRT
UNABLE TO CIRCULATE
FOR 75 MINS

SILTSTONE:brnsh gry,olv gry,
aren,com v grn,

SANDSTONE:trnsl,trnsp,f-pred
med grn,tr crs grn,wl srtd,
sbang-sbrnd,sil cmt,com wh
cly mtx,var calc,tr garnet,
tr felds,tr liths,gd inf por,

SANDSTONE:trnsl,trnsp,f-pred
med grn,f-crs grn,wl srtd,
sbang-sbrnd,sil cmt,com wh
cly mtx,var calc,tr garnet,
tr felds,tr liths,gd inf por,
no fluor.

SILTSTONE:brnsh gry,aren,com
carb spks,tr carb microlaminae,
micmic,frm-mod hd,fiss.

SURVEY @ 1508m
INC: 1.50° AZI:200°

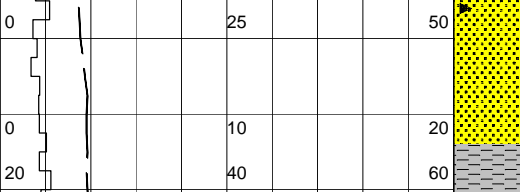
SANDSTONE:trnsl,trnsp,f-pred
med grn,f-crs grn,wl srtd,
sbang-sbrnd,sil cmt,com wh
cly mtx,var calc,tr garnet,
tr felds,tr liths,gd inf por,
no fluor.

7" CASING SHOE
SET @ 1518.4mRT

BODALLA SOUTH-18 REACHED
TD @ 1730 HRS ON 09-08-2007

LOGGING RUNS:
RUN#1:
PEX-HALS-BHC

DRILLER'S DEPTH:
1524m RT/-1370.8m SS



1540

LOGGER'S DEPTH
1523m RT/-1369.8m SS