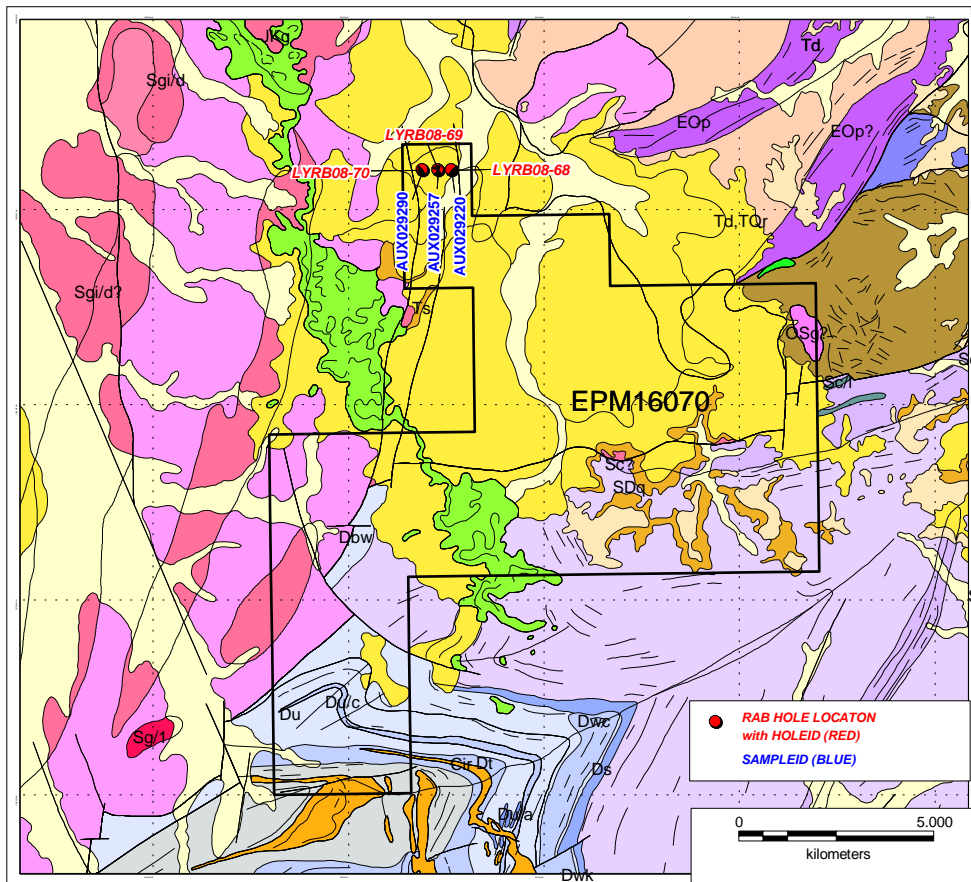


## **APPENDIX III**

***Petrology of RAB holes (LYRB08-68 to 70)  
at the Lynd Project - Dido Dam.  
Tenement Number EPM16070.***

<b>Report Name:</b>	<b>Petrology of RAB holes (LYRB08-68 to 70) at the Lynd Project – Clayhole Creek. Tenement Number EPM16070.</b>
<b>Author:</b>	<b>Fiona Best – PHD Candidate CODES University of Tasmania</b>
<b>Date:</b>	<b>February 2010</b>

A number of representative rock chips from each of the 3 RAB holes (LYRB08-68 to 70) drilled at the Lynd Project, Clayhole Creek, EPM16070, were thin sectioned and studied at the University of Tasmania. An overview of the main lithologies observed in these holes is given in *Table 1* and *Figure 1*, and the end of hole geology of each RAB hole is detailed in *Table 2*.



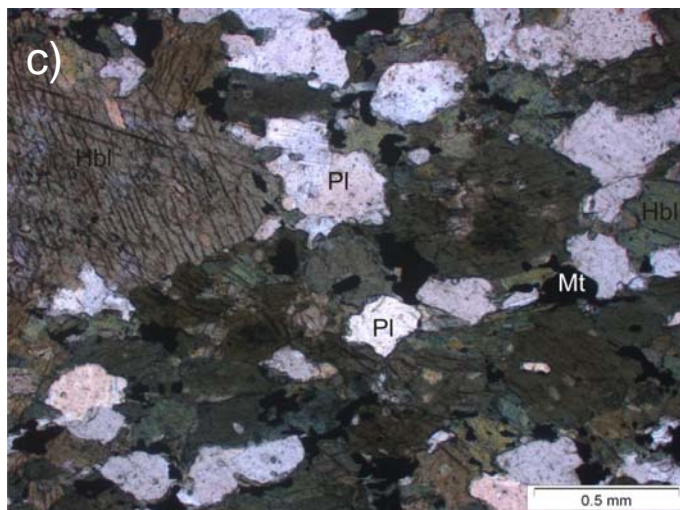
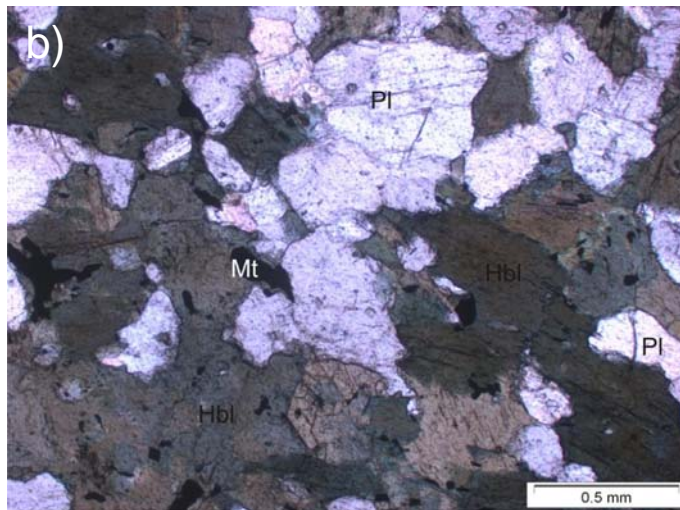
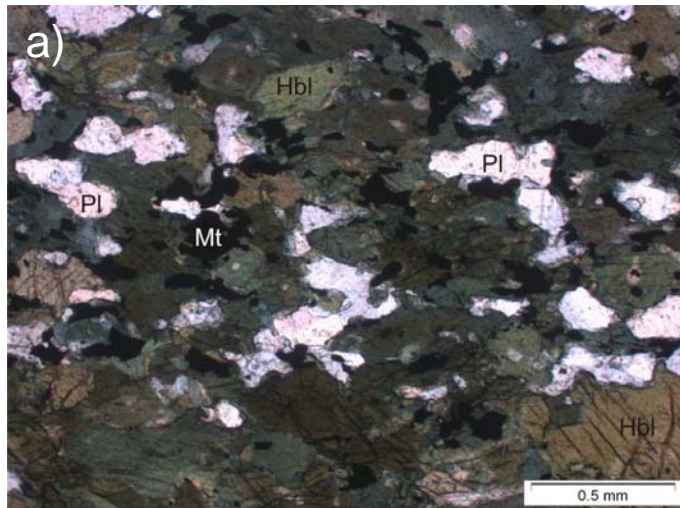
**Figure 1:** Location of Samples and 100,000 Scale State Interpreted Geology

Rock Type	Petrographic Description
<p><b>HORNBLENDE GABBRO</b></p> <p>Hornblende (55-60%) Plagioclase (35-40%) Magnetite (2-5%)</p>	<ul style="list-style-type: none"> <li>• Fine grained Equigranular, interlocking subhedral hornblende and plagioclase (partially altered by sericite). Weakly foliated. &lt;0.2 mm magnetites.</li>   <li>• Medium grained Granular, interlocking subhedral hornblende and plagioclase. Hornblende is deep green, often twinned and predominantly slightly larger (0.5 - 2 mm) than plagioclase (&lt;0.5 mm). Smaller rounded plagioclase and magnetite crystals are commonly included in hornblende. Magnetites (generally &lt;0.3 mm) have curved boundaries at the contact with hornblende and plagioclase.</li> </ul>

**Table 1:** The major petrographic characteristics of the main lithologies observed in RAB holes from the EPM16070, Lynd Project.

Hole ID	Sample ID	Easting	Northing	End of Hole Depth (m)	End of Hole Geology
LYRB08-68	AUX029220	257649	7885 999	66	Gabbro (hbl)
LYRB08-69	AUX029257	257297	7886 000	70	Gabbro (hbl)
LYRB08-70	AUX029290	256901	7886 006	60	Gabbro (hbl)

**Table 2:** End of hole geology, RAB holes LYRB08-068 to LYRB08-70



**Figure 2:** Photomicrographs of thin sections from end of hole samples of RAB holes, EMP16070, under polarized light: all three samples have been described as HORNBLENDE GABBRO (a) SampleID:AUX029220 HoleID:LYRB08-68, (b) SampleID:AUX029257 HoleID:LYRB08-69 and (c) SampleID:AUX029290 HoleID:LYRB08-70, under polarized light showing minerals Hornblende (Hbl), Magnetite(Mt) and Plagioclase (Pl).