

# SmartTrans

## HOLDINGS LIMITED

### EPM 14502 “MARLBOROUGH FAULT CENTRAL”

### Final Report on Exploration for the four year period 20th October 2006 to 19<sup>th</sup> October 2010

Compiled in accordance with the provisions of the  
Mineral Resources Amendment Regulation (No. 4) 2008  
Subordinate Legislation 2008 No. 367

Author:

James Laurie  
Director, SmartTrans Holdings Limited  
PO Box 334 Leederville  
WA 6903

Date:

December 2011

Submitted by:

SmartTrans Holdings Limited

**Distribution:**

Department of Natural Resources and Mines	(1) (online)
Australia Oriental Minerals NL (Holder)	(2) (CD) or email
SmartTrans Holdings Limited	(1) (Hard Copy)
	(1) (CD)

**ABSTRACT** .

EPM 14502 formed approximately one third of the Marlborough Fault Project which also included EPMs 14500 and 14501.

The tenements were held by Australia Oriental Minerals NL. SmartTrans Holdings Limited was farming in to the Project by sole-funding exploration.

The tenement was originally applied for in 1997 and was granted in 2006. The tenement expired on 19<sup>th</sup> October 2010.

Structural analysis and interpretation of the Queensland Government's AIRDATA aeromagnetic survey had delineated a previously unrecognised major regional scale fault system, now referred to as the "Marlborough Fault Zone", on the Eastern side of the Connors Arch.

This structure had been identified as being highly prospective for the formation of porphyry-style copper-gold targets in structurally prepared dilation zones.

A detailed review of historical and reprocessed data possibly reduced the potential for the occurrence of an exposed porphyry-copper style target. However, there were very good indications of structurally-controlled gold-copper mineralisation related to dilations along the Marlborough Fault Zone.

## **TABLE OF CONTENTS**

### **ABSTRACT**

<b>1. INTRODUCTION.....</b>	<b>1</b>
1.1 Tenure .....	1
1.2 Location and Access .....	1
1.3 Exploration Rationale .....	4
<b>2. PREVIOUS EXPLORATION.....</b>	<b>4</b>
<b>3. SUMMARY OF WORK COMPLETED.....</b>	<b>5</b>
3.1 Work Completed 20/10/2006 – 19/10/2007.....	5
3.2 Work Completed 20/10/2007 – 19/10/2008 .....	13
3.3 Work Completed 20/10/2008 – 19/10/2009 .....	15
3.4 Work Completed 20/10/2009 – 19/10/2010 .....	15
<b>4. CONCLUSIONS.....</b>	<b>15</b>
<b>6. BIBLIOGRAPHY.....</b>	<b>22</b>

## **LIST OF FIGURES**

Figure 1:	Locality Plan
Figure 2:	Access
Figure 3:	Sample Location Plan
Figure 4:	Stream Sediment Sample Locations
Figure 5:	Total Magnetic Intensity
Figure 6:	Structural Analysis Map
Figure 7:	Structural Analysis overlain on TMI and Stream Sediment Sampling
Figure 8:	Target Zones 2008
Figure 9:	Target Map
Figure 10:	Prospect Map Christensen's Workings, Owen's Creek
Figure 11:	Prospect Map Connor's Range

## **LIST OF APPENDICES**

Appendix 1:	Geochemical Data – Rock Chip Sampling
Appendix 2:	Geochemical Data – Soil Sampling
Appendix 3:	Geochemical Data – Stream Sediment Sampling

## 1. **INTRODUCTION**

### 1.1 **Tenure**

EPM 14502 was granted on 20<sup>th</sup> October 2006 for a period of four years. The tenement was held by Australia Oriental Minerals NL. SmartTrans Holdings Limited farmed in to the Project by sole-funding exploration. The tenement was not renewed beyond the original four year period.

The tenement originally comprised three hundred and ninety seven sub blocks. A 50% relinquishment (198 sub-blocks) was carried out on 4<sup>th</sup> November 2008 and a further 50% relinquishment was carried out on 19<sup>th</sup> October 2009.

At the end of the tenure the tenement was described as follows:

BIM	BLOCK	A	B	C	D	E	F	G	H	J	K	L	M	N	O	P	Q	R	S	T	U	V	W	X	Y	Z	
CLER	993			C	D	E			H	J	K			N	O	P				T	U					Z	
CLER	1574			C	D				H	J				N	O					S	T	U			X	Y	Z
CLER	1575																					V					
CLER	1429																Q	R	S			V	W	X	Y		
CLER	921																	R	S	T	U		W	X	Y	Z	
CLER	994																					V					
CLER	1430																					V	W	X	Y	Z	
CLER	1065					E					K																
CLER	1138		B	C	D	E		G	H	J	K		M	N	O	P			R	S	T	U					
CLER	1502	A	B	C	D	E	F	G	H	J	K	L		N	O	P	Q						V	W	X		
CLER	1503	A					F				L																
CLER	1066	A					F				L	M					Q	R				V	W				
CLER	1501				D	E				J	K					P						U					

Number of sub-blocks 99.

### 1.2 **Location and Access**

#### Location

The tenement's location is shown on Figure 1 and lies 40 to 60 kilometres to the West and Southwest of Mackay, Queensland.

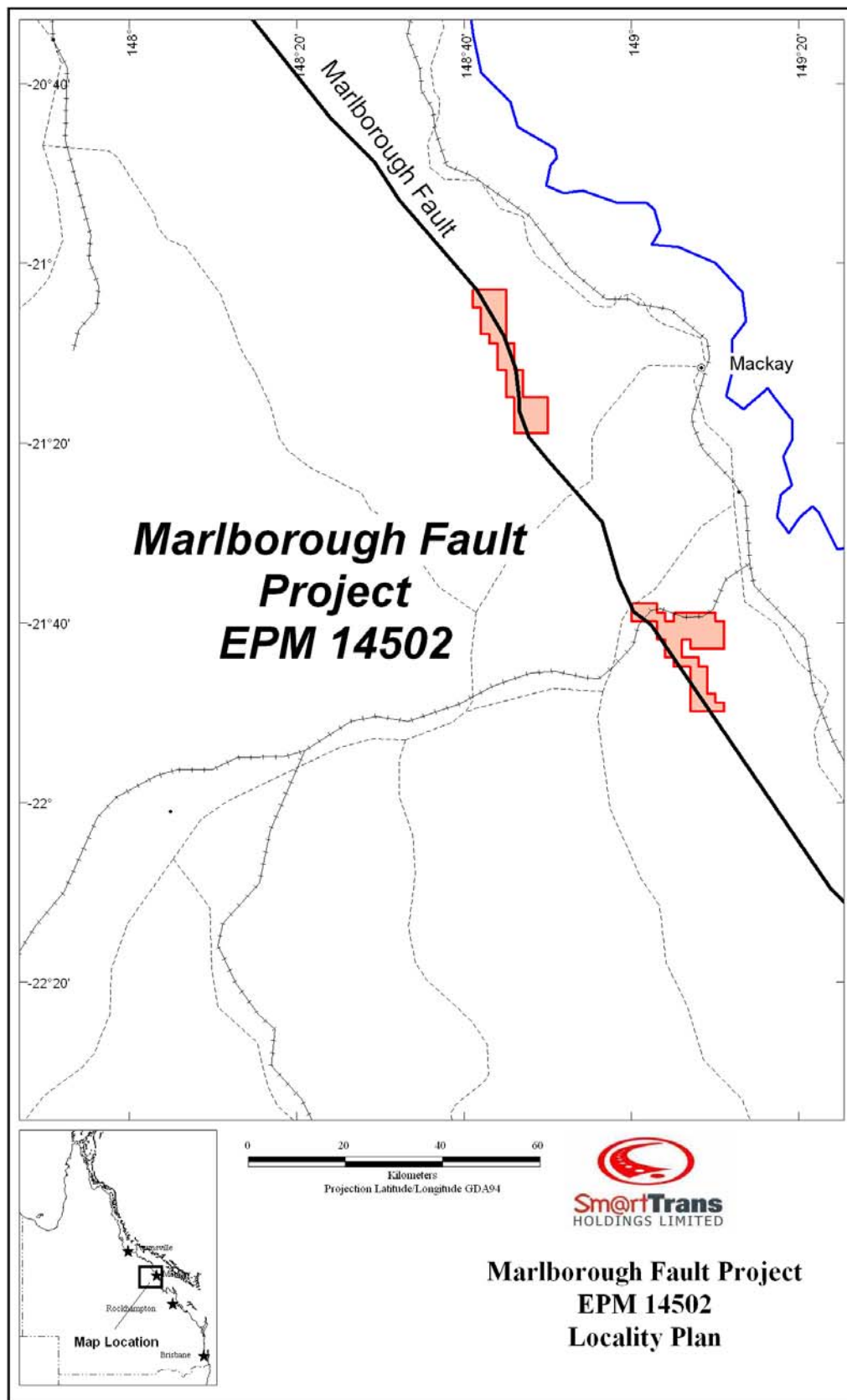


Figure 1: EPM 14502 Locality Plan

## Access

The tenement was divided into two blocks. The Northern block was bisected by the Mackay-Eungella Road and the Southern block was cut by the Marlborough-Sarina Road shown in yellow on Figure 2.

The tenement was covered by a mixture of lowland farming areas where access was very good and was provided by shire roads and farm tracks. Access to elevated, more mountainous, areas was provided by forestry roads and tracks.



Figure 2: Access

### 1.3 Exploration Rationale

Mineral deposits often form in structurally active areas where large crustal steep faults are intersected by other structures to produce active dilatant sites and deep plumbing systems during periods of intrusion and hydrothermal activity.

These sites may be covered by alluvium or younger strata but display characteristic magnetic and radiometric signatures.

Aeromagnetic and radiometric data, together with the sparse, geochemically-oriented previous exploration have been used to produce a structural interpretation and identify such “plumbing-zone” targets.

The premise for developing structural targets is:

- a. Periods of heat flow and fluid circulation;
- b. Permeability of large volumes of fluids through active structures, especially dilatant sites; and
- c. Smaller-scale effects such as favourable temperature and chemical conditions. (Cox, 1997)

## 2. PREVIOUS EXPLORATION

A review of previous exploration revealed a strong bias towards geochemical sampling without any structural interpretation.

The Queensland Mines Department conducted an aeromagnetic and radiometric survey covering part of the tenement as part of its AIRDATA program. This data was acquired for interpretation purposes and the delineation of general targets for tenement acquisition purposes in areas not held under Exploration Licences.

A review of open-file data revealed the following geochemical sampling:

- 14 Rock Chip samples (Appendix 1)
- 83 Soil samples (Appendix 2)
- 492 Stream-sediment samples (Appendix 3).

During 1996 and 1997 the current holder of the tenement, Australia Oriental Minerals NL (“AOM”), previously Marlborough Gold Mines NL (“MGM”) commissioned a confidential study of the Connors Arch in Queensland by consultants Etheridge Henley and Williams (“EHW”). EHW produced two reports, Cox, 1997 and Bacigalupo-Rose, 1997 that prompted MGM to apply for the area covered by EPM 14502.

### **3. SUMMARY OF WORK COMPLETED**

#### **3.1 Work Completed 20/10/2006 – 19/10/2007**

The tenement was granted on 20<sup>th</sup> October 2006, approximately ten years after its application date.

SmartTrans Holdings Limited (“SMA”), as Operator of the Connors Arch Joint Venture with AOM, carried out a comprehensive desk review of the EHW reports with the aim of verifying the methodology, work done, findings and targets identified by EHW.

This work comprised the capture of all of the original data in digital format, compilation of various data sets including geochemistry, geophysics into the Company’s EXPLORER database, and the purchase of ASTER image coverage of the tenement area.

This data was assimilated to produce targets for further exploration.

#### **Geochemistry**

All previous geochemical sampling was digitised and the location of these samples is shown on Figure 3. The following had been collected :

- 14 Rock Chip samples (Appendix 1)
- 83 Soil samples (Appendix 2)
- 492 Stream-sediment samples (Appendix 3).



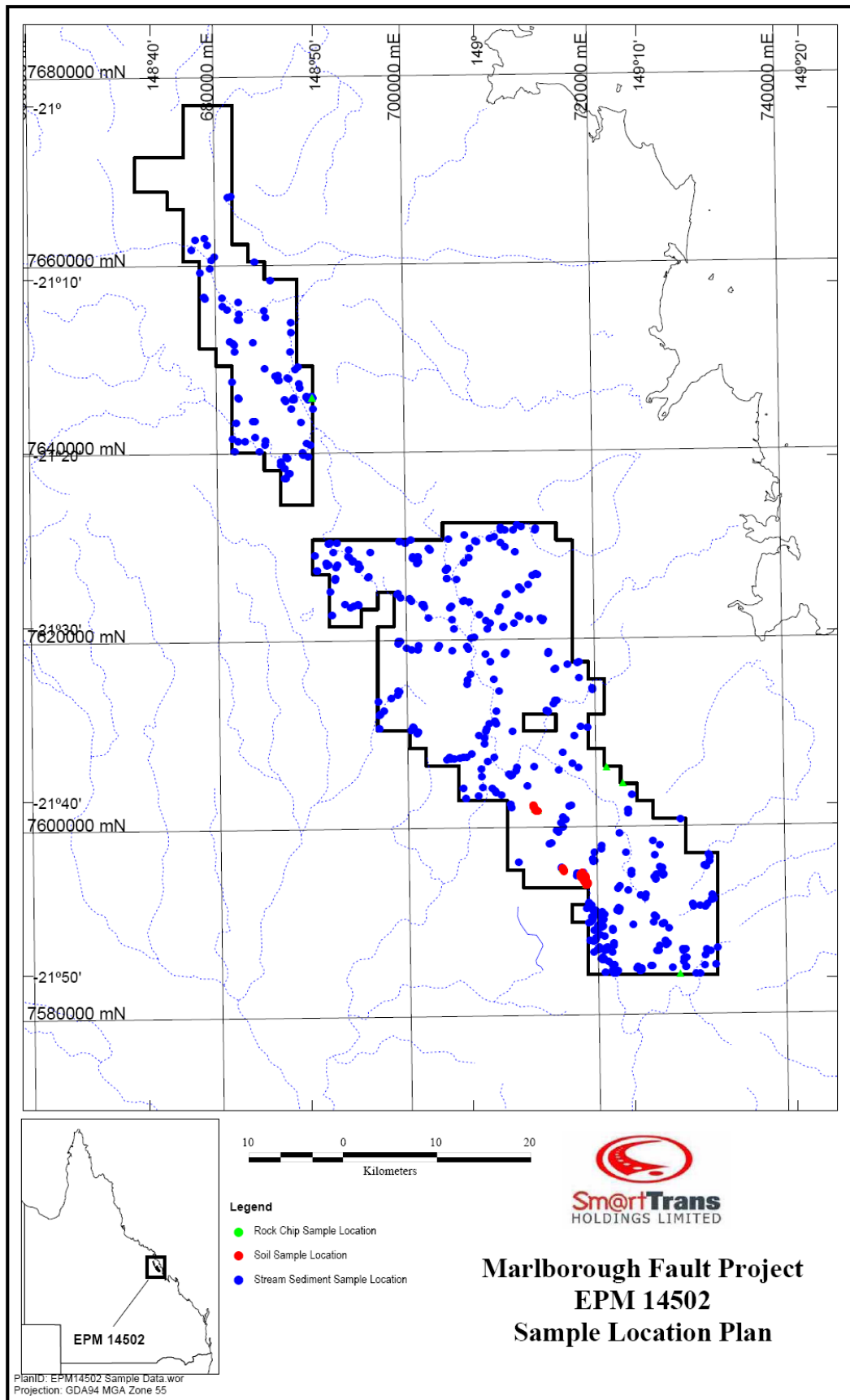


Figure 3: Sample Location Plan

It was found that there were three types of Stream Sediment sampling:

- BLEG Samples;
- Sieved samples; and
- Bulk samples

The distribution of these samples is shown on Figure 4.

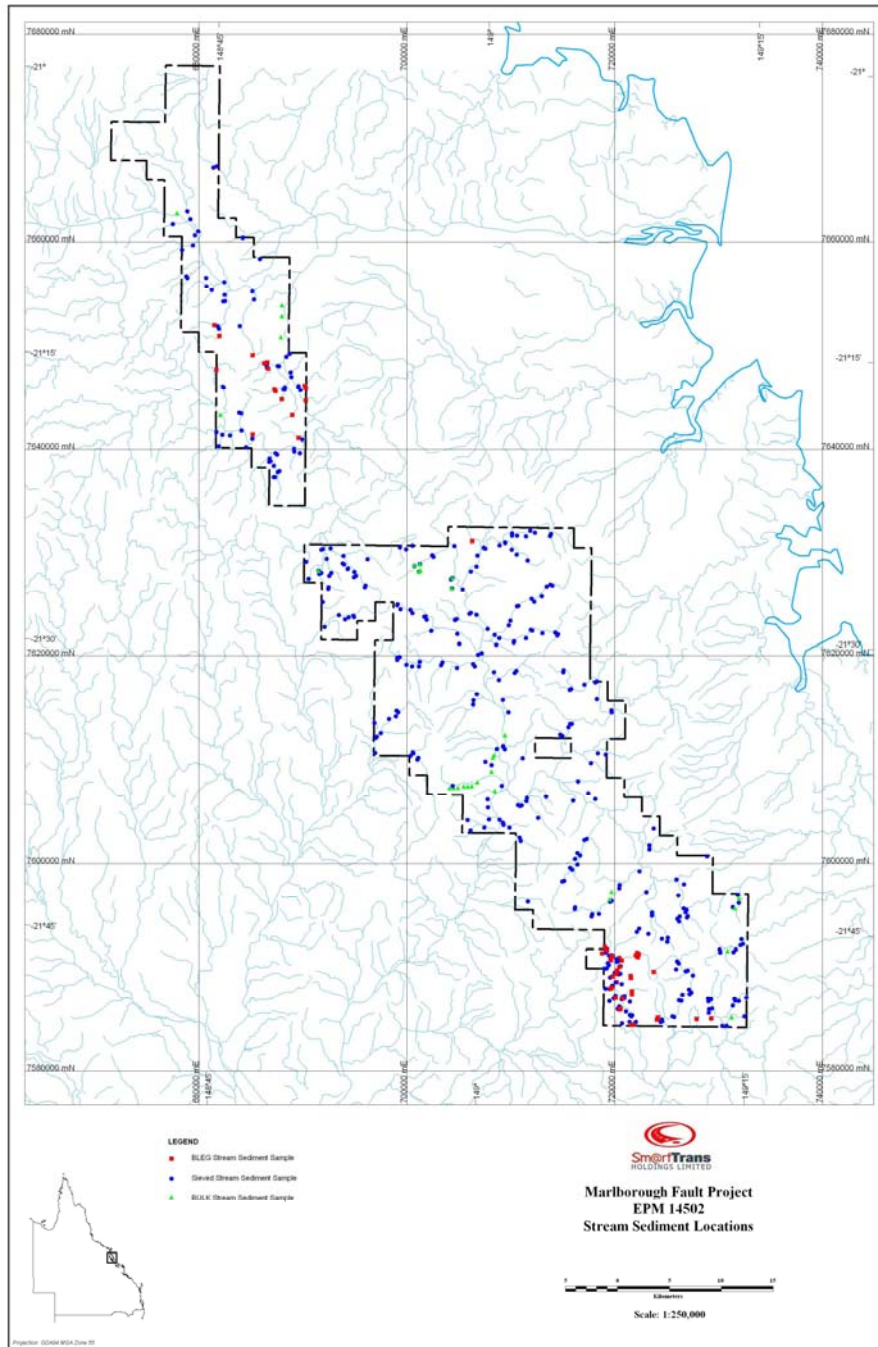


Figure 4: Stream Sediment Sample Locations

### Geophysics

Cox, 1997 reported that EHW had produced interpretative maps at 1:100,000 scale covering EPM14502 comprising the following images:

- Total Magnetic Intensity
- First Vertical Derivative
- KUT Radiometrics, and
- K Channel Pseudocolour.

These plans were reviewed and recompiled and Figure 5 shows the Total Magnetic Intensity of the tenement area.

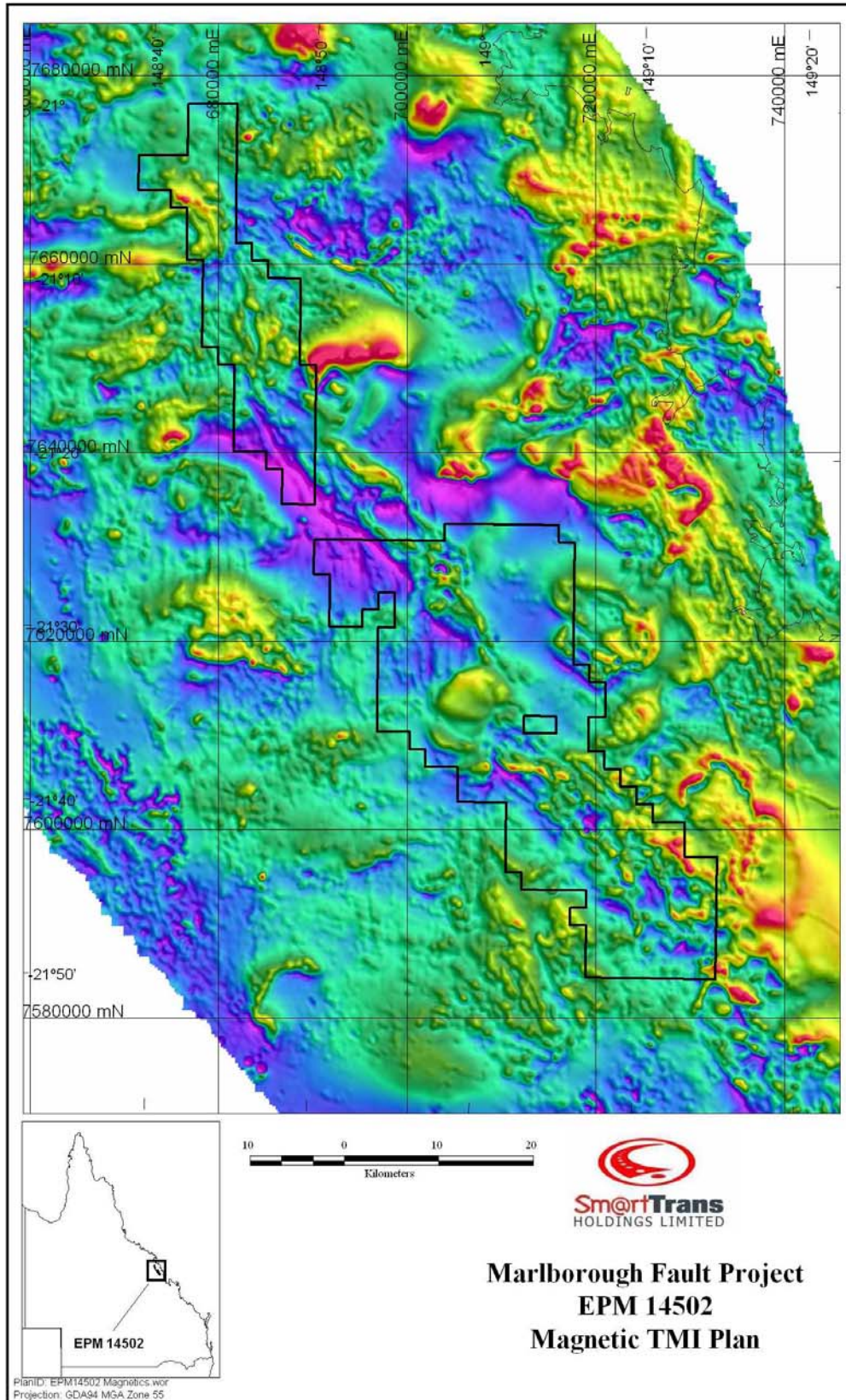


Figure 5: Total Magnetic Intensity

### Structural Analysis

The geophysical surveys were used to outline regionally significant structures and structural patterns that may not have been recognised in traditional geological maps. SmartTrans conducted a review of the work by Cox 1997 who had conducted a regional analysis of the sequence and geometry of deformation events and the timing of mineralisation to develop targeting criteria which included:

- Regional to local structural patterns;
- Timing of events and mineralisation;
- Local fault kinematics; and
- Deposit –scale structural controls.

These criteria were then used to produce targets and the development of an exploration strategy.

Figure 6 shows the structural analysis of the region and Figure 7 shows the amalgamation of magnetics and the structural interpretation of the area.



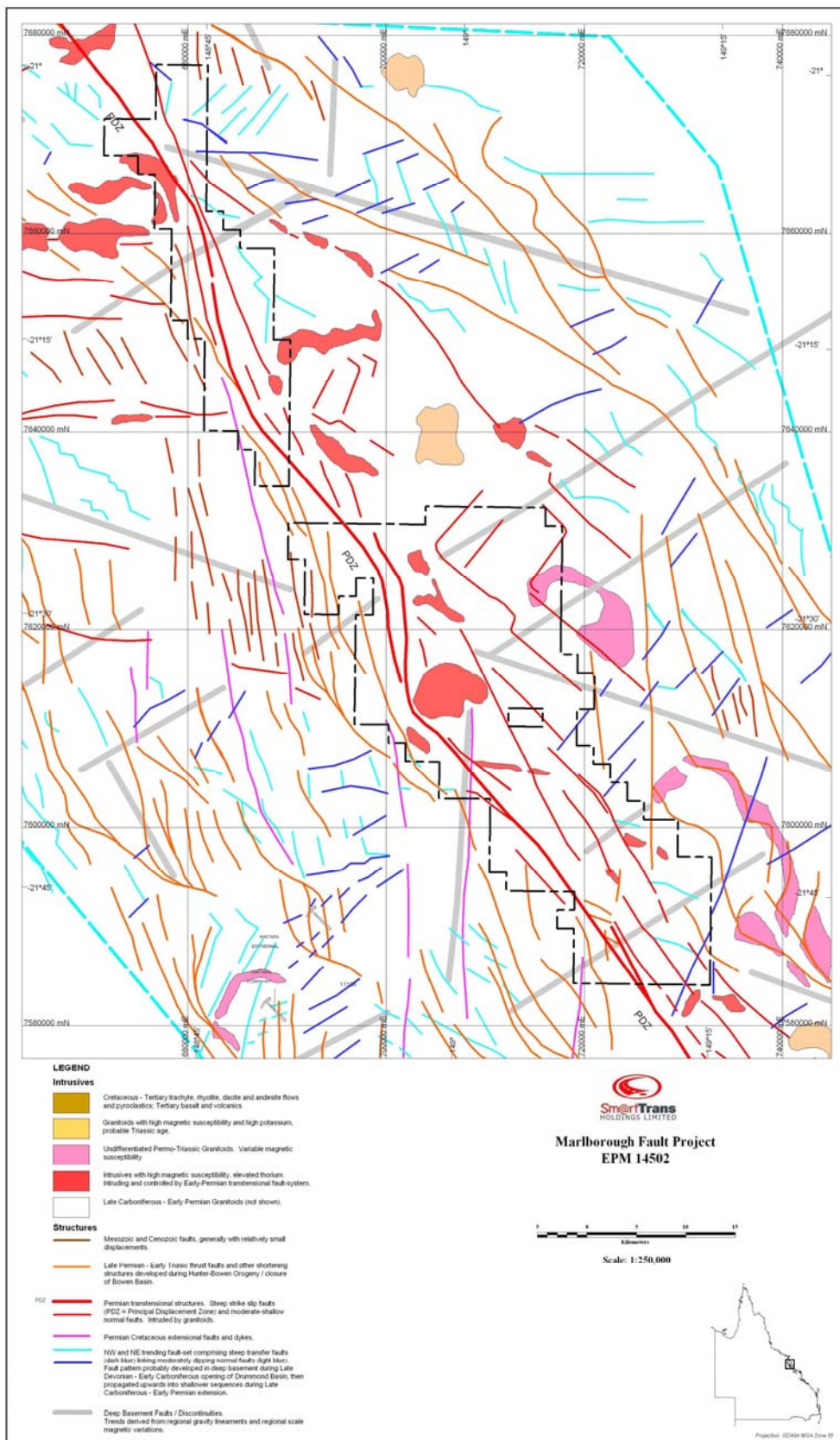


Figure 6: Structural Analysis Map

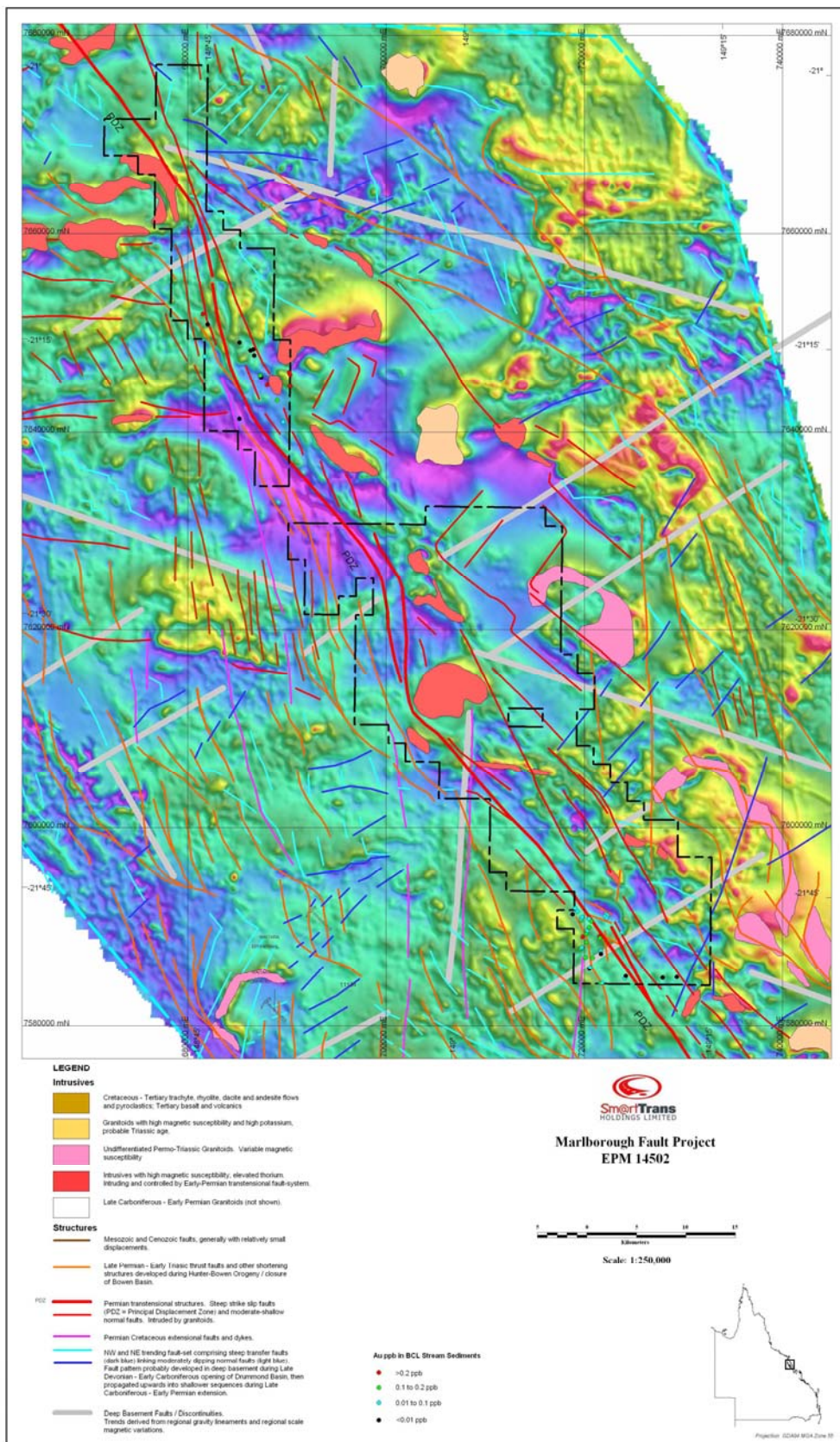


Figure 7: Structural analysis overlain on TMI and Stream Sediment Sampling

### 3.2 Work Completed 20/10/2007 – 19/10/2008

#### Data Management and Data interpretation

A further review of the data was conducted to assess the potential specifically for porphyry/intrusive-style mineralisation. This review built on the structural study completed earlier as well as previous exploration work by CRA, Geopeko, BP Minerals and ACM.

Rock chip, soil samples and stream sediment sampling data was compiled and thematic maps of the following data were constructed:

- Rock Chips
  - Gold
  - Molybdenum
  - Copper
- Stream Sediments
  - Lead
  - Zinc
  - Copper
  - Gold
- BCL samples
  - Gold
- Panned Concentrates
  - Copper
  - Silver
  - Gold

#### Geophysics

The aeromagnetic data was reprocessed and reduced to pole and this was used as a backdrop for interpretation. This resulted in a slight shift in the anomalies but not significant enough to alter the original structural interpretation.

Target zones are shown on Figure 8.



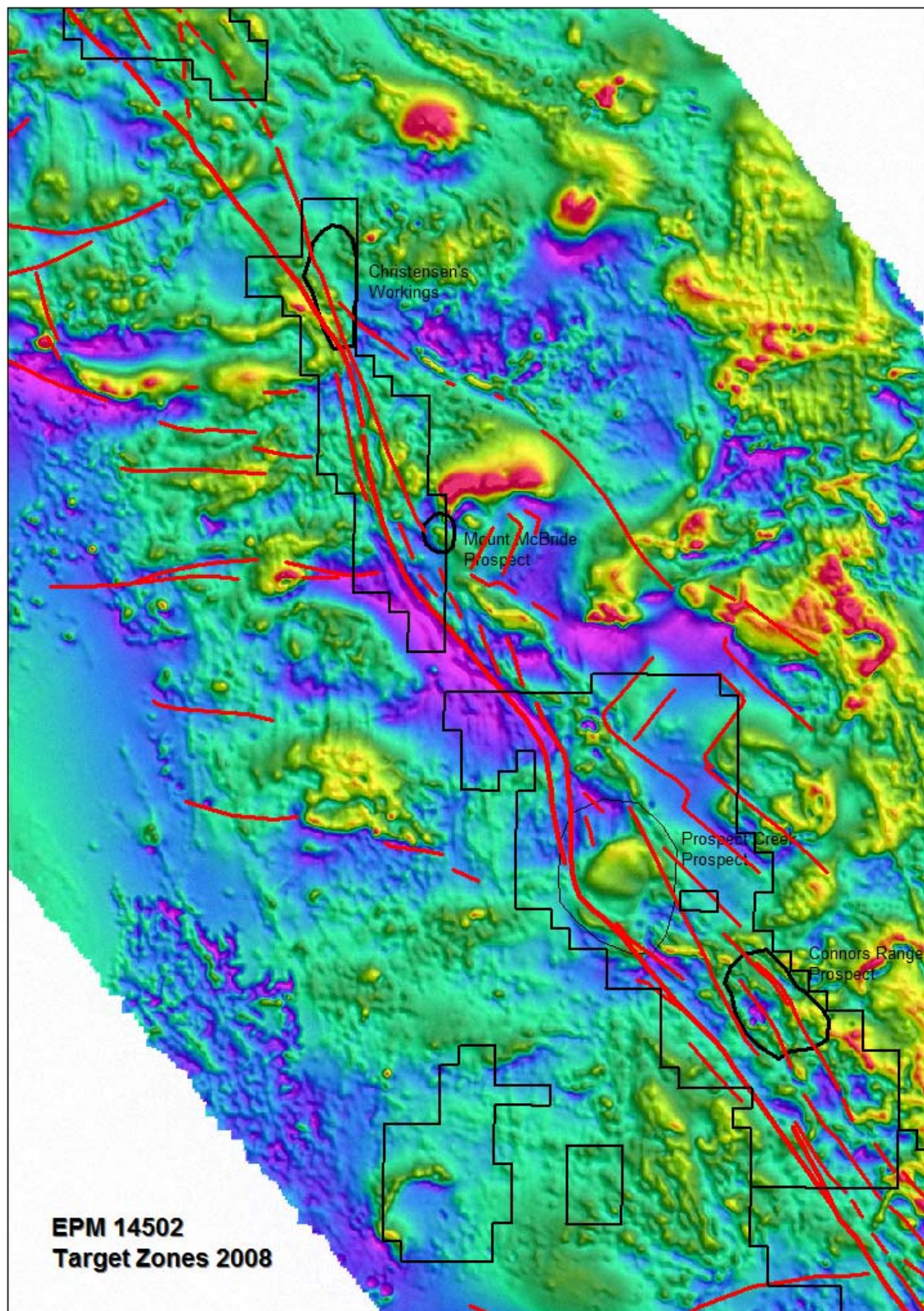


Figure 8: Target Zones 2008

### **3.3 Work Completed 20/10/2008 – 19/10/2009**

Work during the year comprised a comprehensive review of all data, with particular emphasis on areas selected for relinquishment.

A combination of magnetics, mapped geology, mineral occurrences (from Mindep) structural interpretation and geochemistry were used to determine areas suitable for relinquishment

Areas selected for relinquishment had no known mineral occurrences except for Tally Ho Creek in the North West corner with non anomalous stream sediment geochemistry.

Ordered scatter plots of geochemical data were constructed and used to determine anomalous thresholds.

All the base metals as well as arsenic and silver from previous surveys were low. However as most of the central and southern part of the proposed relinquished block had not been sampled for gold there remained the possibility for vein/structural style epithermal/mesothermal gold mineralization similar to Normanby/Mt Hector.

### **3.4 Work Completed 20/10/2009 – 19/10/2010**

There was no field work carried out during the year. Work was confined to office studies. This included interpretation and review of existing data and the review and ranking of areas for relinquishment. No new anomalies or prospects were generated.

## **4. CONCLUSIONS**

It was concluded that the original study of EHW was of a high standard and that there was general agreement with the findings of this study.

EPM 14502 contains a “regional-scale fault system on the Eastern side of the Connors Arch (that) was previously unrecognised. Much of it is covered by alluvium and sedimentary sequences and has only now become apparent

because of the new (AIRDATA) aeromagnetic survey” (Cox, 1977). This structure is referred to as the Marlborough Fault Zone (“MFZ”).

Two standout targets have been identified in the MFZ:

- Mt McBride District; and
- Prospect Creek District.

#### Mt McBride District (Figure 9)

This prospect lies on the Eastern side of the MFZ in an area where Carmila Beds are intruded by granitoids in the vicinity of the Bong-Bong (Cu/ Au), Pine Vale (Cu/Au) and another unnamed Cu/Au mine.

Structures are dominated by a major splay off the MFZ and NE trending faults and fractures that are interpreted to be shallow level extensional structures accommodation DILATION at the change in orientation of the MFZ (Cox, 1977).

Geophysical signatures contain areas of very low magnetic susceptibility and elevated Uranium.

The concurrence of mineralisation and the presence of a favourable structural setting with distinct intrusives has identified this area as being worth further follow-up exploration.

#### Prospect Creek District (Figure 9)

Prospect Creek is located on a transform fault system, the MFZ, where the principal displacement zone has become intruded, indistinct and undergoes a change in direction.

The zone has a complex geophysical signature that contains elements of moderate to low magnetic susceptibility plutons, a high magnetic susceptibility pluton that is possible buried, a possible low K / high Th signature caused by hydrothermal alteration and a possibly reversely-magnetised intrusion in the south west of the area.

The prospect is situated in a distinct major bend in the MFZ and has all of the requirements for mineral deposit formation (Cox, 1997).

The Prospect Creek prospect has been downgraded as an exposed porphyry style target.

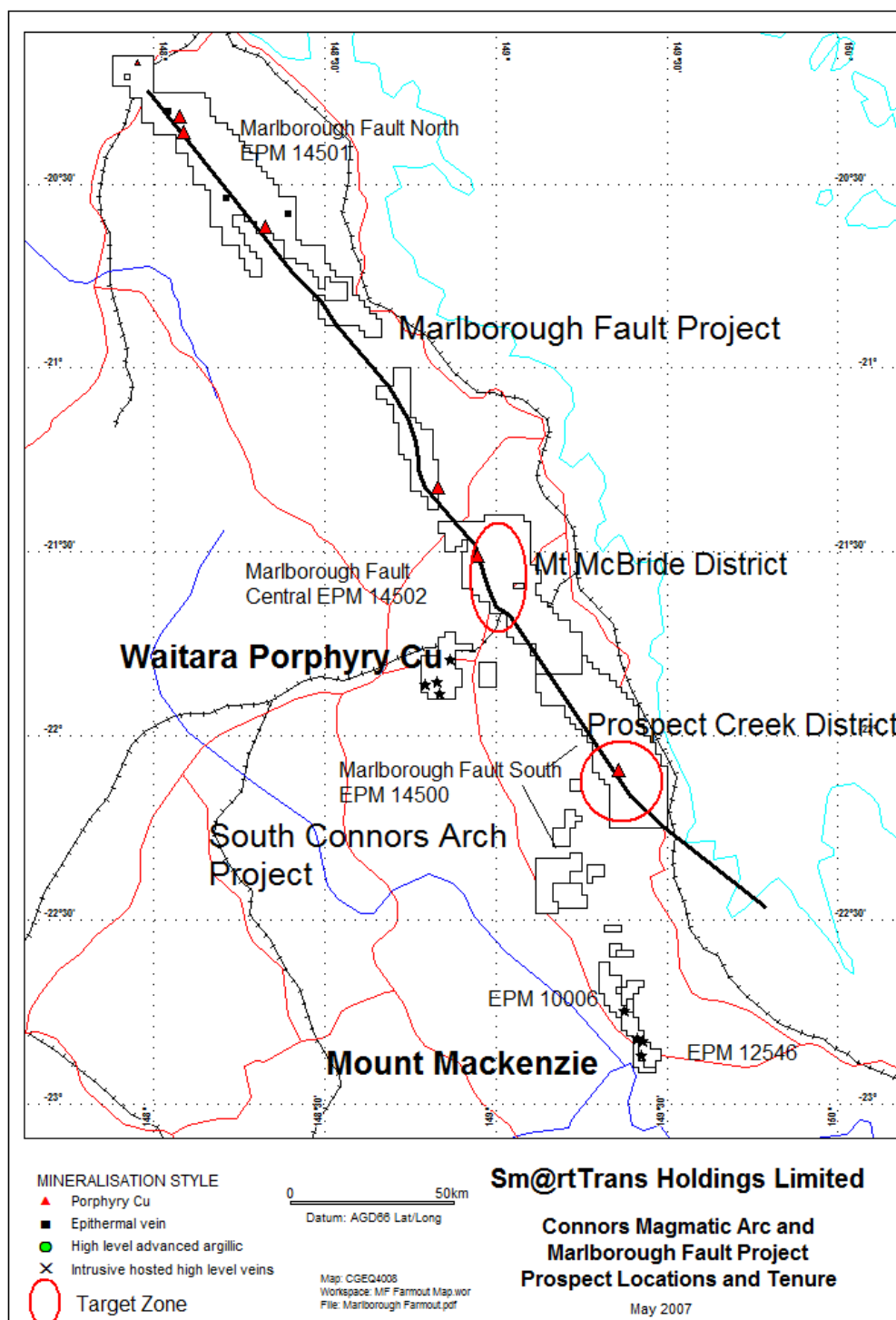


Figure 9: Target Map

In a study by Farmer 2008, prospects were identified at the following locations:

- Mount McBride (including West Bong Bong)
- Christensen's Workings (including Owen's Creek)
- Connor's Range

#### Mount McBride, West Bong Bong:

This is part of the Mt Mc Bride target area of EHW. The stream sediment coverage is good with low base metals geochemistry. One BLEG sample of 8 ppb Au and weakly anomalous Pb most likely drain from the Bong Bong workings.

#### Christensen's Workings, Owen's Creek (Figure 10)

This area has been quite well explored and has been drilled by C.R.A. in the early 1990's. Anomalous stream sediment sampling was followed up by grid soil sampling, IP and drilling at Owen's Creek where a large zone of clay-silica-sericite alteration hosted by an intrusive was recognized. Fourteen reverse circulation holes were drilled to a maximum depth of 91 meters. The best result was 14 meters @ 0.56 g/t Au with weak zinc anomalism. Molybdenum was not assayed. Follow up drilling around this location failed to extend significant gold mineralisation.

Anomalous gold and base metals geochemistry is open to the north towards Christensen's workings ( three quartz veins up to 1 meter wide with galena and pyrite) and close to the intersection of a deep seated basement structure and NW trending major fault.



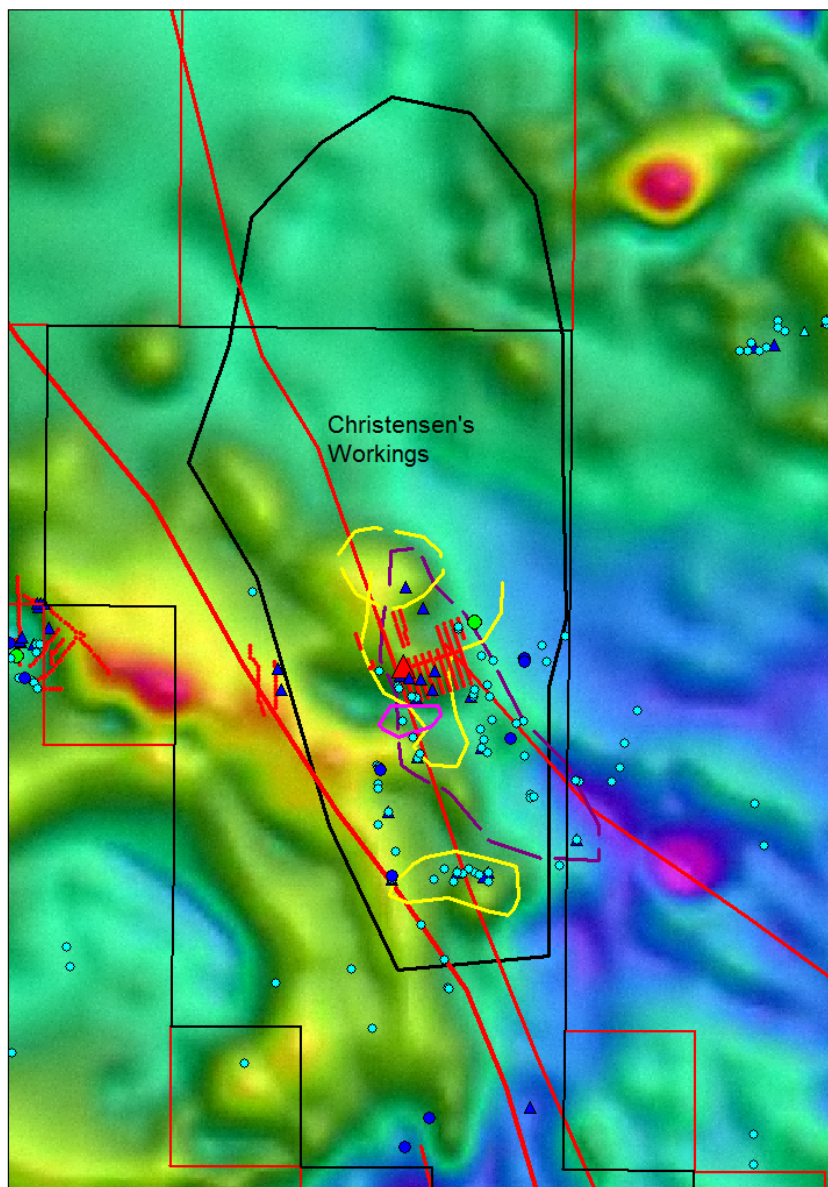


Figure 10: Prospect Map Christensen's Workings, Owen's Creek

### Connor's Range (Figure 11)

Connor's Range lies within the Prospect Creek target district. An interesting magnetic low feature sits astride a major North West trending fault. This area has only partly been covered by stream sediments (no gold assays carried out). The area is quite large and is at the margin of the Urannah Batholith and Whelan Creek Volcanics. The magnetic low feature has been mapped as part of the Batholith but is most likely to be a discrete intrusive body.

There are discrete gold in stream sediment anomalies both BLEG and SS in Murray Creek. In most cases these have been re-sampled and the results have been negative.

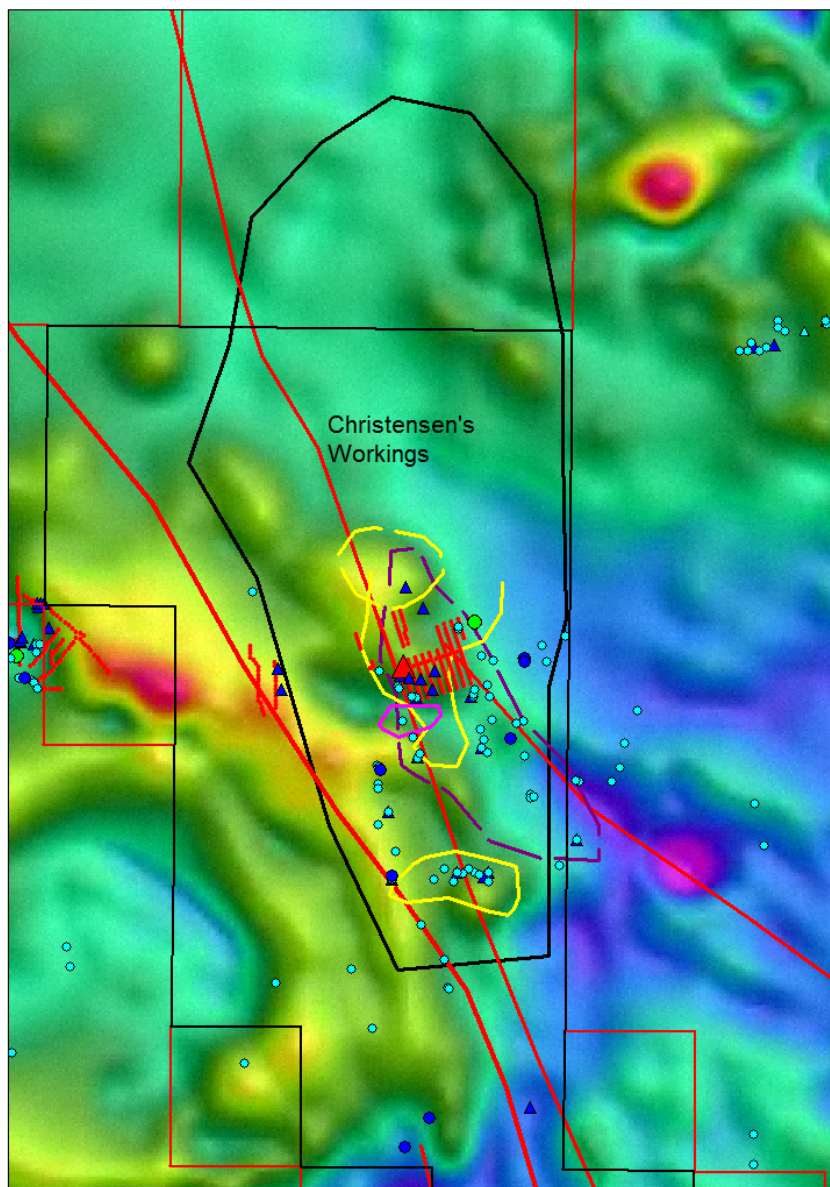


Figure 11: Prospect Map Connor's Range



## 6. **BIBLIOGRAPHY**

Bacigalupo-Rose, S 1996 Exploration of the South Connors Arch Area, Qld. Unpublished confidential report by Etheridge Henley Williams for Marlborough Gold Mines NL.

Bacigalupo-Rose, S 1997 Review of Geochemistry of selected targets, Connors Arch Queensland. Two volumes. Unpublished confidential report by Etheridge Henley Williams for Marlborough Gold Mines NL.

Cox, S 1997 Structural Prospectivity of Connors Arch, Queensland. Unpublished confidential report by Etheridge Henley Williams for Marlborough Gold Mines NL.

Farmer, M 2008 Review of Exploration Potential of the SmartTrans Tenements, Northern Queensland. Unpublished confidential report for SmartTrans Holdings Limited.

Laurie, J 2007 EPM 14502 "MARLBOROUGH FAULT CENTRAL" Annual Report on Exploration for the twelve month period ended 20/10/2007.

Laurie, J 2008 EPM 14502 "MARLBOROUGH FAULT CENTRAL" Annual Report on Exploration for the twelve month period ended 20/10/2008.

Laurie, J 2008 EPM 14502 "MARLBOROUGH FAULT CENTRAL" Partial Relinquishment Report December 2008.

Laurie, J 2009 EPM 14502 "MARLBOROUGH FAULT CENTRAL" Annual Report on Exploration for the twelve month period ended 20/10/2009.

Laurie, J 2009 EPM 14502 "MARLBOROUGH FAULT CENTRAL" Partial Relinquishment Report November 2009.

Laurie, J 2011 EPM 14502 "MARLBOROUGH FAULT CENTRAL" Annual Report on Exploration for the twelve month period ended 20/10/2010.

# **APPENDICES**

# **APPENDIX 1**

## Rock Chip Sampling

Prospect_Code	Company	Sheet_Number	Sample	Data_Type	Grid_ID	Locality	Collection_Method	Country	State	Amg_N	Amg_E
ACBR	ACM	8754	62845	RC	AMG2			AUS	QLD	7584191	728691
BMSA	BMA	8754	5862	RC	AMG2		G	AUS	QLD	7604500	722838
BMSA	BMA	8754	7401	RC	AMG2		G	AUS	QLD	7606169	721135
PZGT	PENZ	8754	MCSRC1	RC	AMG2	Mickys Creek South	G	AUS	QLD	7601616	713772
PZGT	PENZ	8754	MCSRC7	RC	AMG2	Mickys Creek South	G	AUS	QLD	7601757	713468
PZGT	PENZ	8754	MCSRC9	RC	AMG2	Mickys Creek South	G	AUS	QLD	7601877	713455
PZGT	PENZ	8754	OCRC15	RC	AMG2	Oaky Creek	G	AUS	QLD	7593756	718799
PZGT	PENZ	8754	OCRC3	RC	AMG2	Oaky Creek	G	AUS	QLD	7595501	716348
PZGT	PENZ	8754	OCRC39.5	RC	AMG2	Oaky Creek	G	AUS	QLD	7594658	718240
PZGT	PENZ	8754	OCRC4	RC	AMG2	Oaky Creek	G	AUS	QLD	7595482	716355
PZGT	PENZ	8754	OCRC6	RC	AMG2	Oaky Creek	G	AUS	QLD	7595433	716379
PZGT	PENZ	8754	OCRC7	RC	AMG2	Oaky Creek	G	AUS	QLD	7595414	716388
RMPR	ROSS	8655	1240067	RC	AMG2	Bong Bong	G	AUS	QLD	7645700	690200
RMPR	ROSS	8655	1240068	RC	AMG2		G	AUS	QLD	7645700	690200



Job_No	Tenement_Type	Tenement	Report_Type	Report	Open_File
PIL90003	EPM	6020	CR	22164	Y
PIL87057	EPM	4623	CR	17394	Y
PIL87057	EPM	4623	CR	17394	Y
ALS81059	EPM	2964	CR	9656	Y
ALS81059	EPM	2964	CR	9656	Y
ALS81059	EPM	2964	CR	9656	Y
ALS81059	EPM	2964	CR	9656	Y
ALS81059	EPM	2964	CR	9656	Y
ALS81059	EPM	2964	CR	9656	Y
ALS81059	EPM	2964	CR	9656	Y
ALS81059	EPM	2964	CR	9656	Y
ALS81059	EPM	2964	CR	9656	Y
ALS81059	EPM	2964	CR	9656	Y
ALS81059	EPM	2964	CR	9656	Y
ALS87061	EPM	4863	CR	18320	Y
ALS87061	EPM	4863	CR	18320	Y

# **APPENDIX 2**

## Soil Sampling

Prospect_Code	Company	Sheet_Number	Sample	Data_Type	Mesh	Sample_ID	Grid_ID	Location_Accuracy	Country	State	Amg_N	Amg_E	Au
PZGT	PENZ	8754	MCSSL1	SOIL	-80#	528594	AMG2		50 AUS	QLD	7601616	713772	-3
PZGT	PENZ	8754	MCSSL10	SOIL	-80#	528595	AMG2		50 AUS	QLD	7601922	713430	5
PZGT	PENZ	8754	MCSSL11	SOIL	-80#	528596	AMG2		50 AUS	QLD	7601992	713379	5
PZGT	PENZ	8754	MCSSL12	SOIL	-80#	528597	AMG2		50 AUS	QLD	7602030	713347	-3
PZGT	PENZ	8754	MCSSL13	SOIL	-80#	528598	AMG2		50 AUS	QLD	7602081	713309	3
PZGT	PENZ	8754	MCSSL14	SOIL	-80#	528599	AMG2		50 AUS	QLD	7602144	713310	10
PZGT	PENZ	8754	MCSSL15	SOIL	-80#	528600	AMG2		50 AUS	QLD	7602208	713303	10
PZGT	PENZ	8754	MCSSL16	SOIL	-80#	528601	AMG2		50 AUS	QLD	7602259	713303	5
PZGT	PENZ	8754	MCSSL17	SOIL	-80#	528602	AMG2		50 AUS	QLD	7602329	713284	15
PZGT	PENZ	8754	MCSSL2	SOIL	-80#	528603	AMG2		50 AUS	QLD	7601648	713728	3
PZGT	PENZ	8754	MCSSL3	SOIL	-80#	528604	AMG2		50 AUS	QLD	7601680	713690	10
PZGT	PENZ	8754	MCSSL4	SOIL	-80#	528605	AMG2		50 AUS	QLD	7601642	713639	15
PZGT	PENZ	8754	MCSSL5	SOIL	-80#	528606	AMG2		50 AUS	QLD	7601674	713575	5
PZGT	PENZ	8754	MCSSL6	SOIL	-80#	528607	AMG2		50 AUS	QLD	7601706	713525	3
PZGT	PENZ	8754	MCSSL7	SOIL	-80#	528608	AMG2		50 AUS	QLD	7601757	713468	10
PZGT	PENZ	8754	MCSSL8	SOIL	-80#	528609	AMG2		50 AUS	QLD	7601826	713480	5
PZGT	PENZ	8754	MCSSL9	SOIL	-80#	528610	AMG2		50 AUS	QLD	7601877	713455	5
PZGT	PENZ	8754	OCSL1	SOIL	-80#	528817	AMG2		50 AUS	QLD	7595540	716324	5
PZGT	PENZ	8754	OCSL10	SOIL	-80#	528818	AMG2		50 AUS	QLD	7595353	716419	3
PZGT	PENZ	8754	OCSL11	SOIL	-80#	528819	AMG2		50 AUS	QLD	7595324	716426	15
PZGT	PENZ	8754	OCSL12	SOIL	-80#	528820	AMG2		50 AUS	QLD	7595312	716450	15
PZGT	PENZ	8754	OCSL13	SOIL	-80#	528821	AMG2		50 AUS	QLD	7595293	716465	5
PZGT	PENZ	8754	OCSL14	SOIL	-80#	528822	AMG2		50 AUS	QLD	7595208	716455	3
PZGT	PENZ	8754	OCSL15	SOIL	-80#	528823	AMG2		50 AUS	QLD	7593754	718797	-3
PZGT	PENZ	8754	OCSL16	SOIL	-80#	528824	AMG2		50 AUS	QLD	7593804	718795	5
PZGT	PENZ	8754	OCSL17	SOIL	-80#	528825	AMG2		50 AUS	QLD	7593853	718793	3
PZGT	PENZ	8754	OCSL18	SOIL	-80#	528826	AMG2		50 AUS	QLD	7593899	718791	3
PZGT	PENZ	8754	OCSL19	SOIL	-80#	528827	AMG2		50 AUS	QLD	7593935	718769	3
PZGT	PENZ	8754	OCSL2	SOIL	-80#	528828	AMG2		50 AUS	QLD	7595520	716331	10
PZGT	PENZ	8754	OCSL20	SOIL	-80#	528829	AMG2		50 AUS	QLD	7593962	718748	10
PZGT	PENZ	8754	OCSL201	SOIL	-80#	528830	AMG2		50 AUS	QLD	7593708	718799	5
PZGT	PENZ	8754	OCSL202	SOIL	-80#	528831	AMG2		50 AUS	QLD	7593715	718855	3



PZGT	PENZ	8754	OCSL203	SOIL	-80#	528832	AMG2	50	AUS	QLD	7593748	718903	3
PZGT	PENZ	8754	OCSL205	SOIL	-80#	528833	AMG2	50	AUS	QLD	7593818	718945	10
PZGT	PENZ	8754	OCSL206	SOIL	-80#	528834	AMG2	50	AUS	QLD	7593854	718969	3
PZGT	PENZ	8754	OCSL207	SOIL	-80#	528835	AMG2	50	AUS	QLD	7593888	719001	3
PZGT	PENZ	8754	OCSL209	SOIL	-80#	528836	AMG2	50	AUS	QLD	7593970	718979	3
PZGT	PENZ	8754	OCSL21	SOIL	-80#	528837	AMG2	50	AUS	QLD	7594001	718716	5
PZGT	PENZ	8754	OCSL210	SOIL	-80#	528838	AMG2	50	AUS	QLD	7594016	718953	10
PZGT	PENZ	8754	OCSL211	SOIL	-80#	528839	AMG2	50	AUS	QLD	7594050	718920	3
PZGT	PENZ	8754	OCSL213	SOIL	-80#	528840	AMG2	50	AUS	QLD	7594123	718860	5
PZGT	PENZ	8754	OCSL215	SOIL	-80#	528841	AMG2	50	AUS	QLD	7594203	718805	3
PZGT	PENZ	8754	OCSL216	SOIL	-80#	528842	AMG2	50	AUS	QLD	7594239	718776	5
PZGT	PENZ	8754	OCSL217	SOIL	-80#	528843	AMG2	50	AUS	QLD	7594259	718747	10
PZGT	PENZ	8754	OCSL218	SOIL	-80#	528844	AMG2	50	AUS	QLD	7594288	718716	5
PZGT	PENZ	8754	OCSL219	SOIL	-80#	528845	AMG2	50	AUS	QLD	7594326	718728	5
PZGT	PENZ	8754	OCSL22	SOIL	-80#	528846	AMG2	50	AUS	QLD	7594039	718685	3
PZGT	PENZ	8754	OCSL221	SOIL	-80#	528847	AMG2	50	AUS	QLD	7594423	718755	5
PZGT	PENZ	8754	OCSL223	SOIL	-80#	528848	AMG2	50	AUS	QLD	7594519	718766	3
PZGT	PENZ	8754	OCSL225	SOIL	-80#	528849	AMG2	50	AUS	QLD	7594609	718740	10
PZGT	PENZ	8754	OCSL227	SOIL	-80#	528850	AMG2	50	AUS	QLD	7594686	718721	15
PZGT	PENZ	8754	OCSL229	SOIL	-80#	528851	AMG2	50	AUS	QLD	7594752	718683	10
PZGT	PENZ	8754	OCSL23	SOIL	-80#	528852	AMG2	50	AUS	QLD	7594076	718666	3
PZGT	PENZ	8754	OCSL24	SOIL	-80#	528853	AMG2	50	AUS	QLD	7594112	718640	3
PZGT	PENZ	8754	OCSL25	SOIL	-80#	528854	AMG2	50	AUS	QLD	7594144	718609	3
PZGT	PENZ	8754	OCSL26	SOIL	-80#	528855	AMG2	50	AUS	QLD	7594183	718575	-3
PZGT	PENZ	8754	OCSL27	SOIL	-80#	528856	AMG2	50	AUS	QLD	7594207	718558	3
PZGT	PENZ	8754	OCSL28	SOIL	-80#	528857	AMG2	50	AUS	QLD	7594260	718542	5
PZGT	PENZ	8754	OCSL29	SOIL	-80#	528858	AMG2	50	AUS	QLD	7594308	718532	3
PZGT	PENZ	8754	OCSL3	SOIL	-80#	528859	AMG2	50	AUS	QLD	7595501	716345	5
PZGT	PENZ	8754	OCSL30	SOIL	-80#	528860	AMG2	50	AUS	QLD	7594369	718523	3
PZGT	PENZ	8754	OCSL31	SOIL	-80#	528861	AMG2	50	AUS	QLD	7594398	718482	5
PZGT	PENZ	8754	OCSL32	SOIL	-80#	528862	AMG2	50	AUS	QLD	7594427	718441	10
PZGT	PENZ	8754	OCSL33	SOIL	-80#	528863	AMG2	50	AUS	QLD	7594452	718403	5
PZGT	PENZ	8754	OCSL34	SOIL	-80#	528864	AMG2	50	AUS	QLD	7594481	718365	5

PZGT	PENZ	8754	OCSL35	SOIL	-80#	528865	AMG2	50	AUS	QLD	7594515	718319	5
PZGT	PENZ	8754	OCSL36	SOIL	-80#	528866	AMG2	50	AUS	QLD	7594544	718283	5
PZGT	PENZ	8754	OCSL37	SOIL	-80#	528867	AMG2	50	AUS	QLD	7594564	718269	5
PZGT	PENZ	8754	OCSL38	SOIL	-80#	528868	AMG2	50	AUS	QLD	7594607	718257	5
PZGT	PENZ	8754	OCSL4	SOIL	-80#	528869	AMG2	50	AUS	QLD	7595482	716357	10
PZGT	PENZ	8754	OCSL40	SOIL	-80#	528870	AMG2	50	AUS	QLD	7594699	718221	5
PZGT	PENZ	8754	OCSL42	SOIL	-80#	528871	AMG2	50	AUS	QLD	7594791	718227	3
PZGT	PENZ	8754	OCSL44	SOIL	-80#	528872	AMG2	50	AUS	QLD	7594870	718251	3
PZGT	PENZ	8754	OCSL45	SOIL	-80#	528873	AMG2	50	AUS	QLD	7594914	718276	-3
PZGT	PENZ	8754	OCSL46	SOIL	-80#	528874	AMG2	50	AUS	QLD	7594955	718310	-3
PZGT	PENZ	8754	OCSL47	SOIL	-80#	528875	AMG2	50	AUS	QLD	7594995	718332	3
PZGT	PENZ	8754	OCSL48	SOIL	-80#	528876	AMG2	50	AUS	QLD	7595031	718371	5
PZGT	PENZ	8754	OCSL49	SOIL	-80#	528877	AMG2	50	AUS	QLD	7595065	718393	3
PZGT	PENZ	8754	OCSL5	SOIL	-80#	528878	AMG2	50	AUS	QLD	7595457	716369	15
PZGT	PENZ	8754	OCSL6	SOIL	-80#	528879	AMG2	50	AUS	QLD	7595433	716379	15
PZGT	PENZ	8754	OCSL7	SOIL	-80#	528880	AMG2	50	AUS	QLD	7595419	716388	10
PZGT	PENZ	8754	OCSL8	SOIL	-80#	528881	AMG2	50	AUS	QLD	7595397	716395	5
PZGT	PENZ	8754	OCSL9	SOIL	-80#	528882	AMG2	50	AUS	QLD	7595373	716407	5

Au1	Cu	Pb	Zn	Ag	As	Bi	Mo	Sn	Sb	W	Job_No	Tenement_Type	Tenement	Report_Type	Report	Open_File
10	25	75	1		15	-4	5	-1	10	ALS81056	EPM	2964	CR	9656	Y	
30	25	85	1		15	-4	-5	-1	10	ALS81056	EPM	2964	CR	9656	Y	
35	25	80	1		20	8	15	-1	20	ALS81056	EPM	2964	CR	9656	Y	
10	15	35	1		10	-4	-5	-1	10	ALS81056	EPM	2964	CR	9656	Y	
20	20	55	1		20	-4	-5	-1	15	ALS81056	EPM	2964	CR	9656	Y	
70	50	830	1		20	-4	20	-1	10	ALS81056	EPM	2964	CR	9656	Y	
10	20	70	1		10	-4	-5	-1	-10	ALS81056	EPM	2964	CR	9656	Y	
10	30	130	1		15	-4	25	-1	-10	ALS81056	EPM	2964	CR	9656	Y	
10	30	70	1		10	-4	5	-1	20	ALS81056	EPM	2964	CR	9656	Y	
15	20	35	1		10	-4	-5	-1	-10	ALS81056	EPM	2964	CR	9656	Y	
20	25	70	1		20	-4	-5	-1	-10	ALS81056	EPM	2964	CR	9656	Y	
20	30	135	2		20	-4	5	-1	-10	ALS81056	EPM	2964	CR	9656	Y	
10	15	25	1		10	-4	-5	-1	10	ALS81056	EPM	2964	CR	9656	Y	
30	20	60	1		15	-4	-5	-1	10	ALS81056	EPM	2964	CR	9656	Y	
30	25	50	1		10	-4	5	-1	10	ALS81056	EPM	2964	CR	9656	Y	
10	20	40	1		10	-4	-5	-1	10	ALS81056	EPM	2964	CR	9656	Y	
10	15	20	1		15	-4	-5	-1	-10	ALS81056	EPM	2964	CR	9656	Y	
15	55	75	1	-5	20	-4	5	-1	10	ALS81056	EPM	2964	CR	9656	Y	
20	240	45	2	-5	20	68	-5	-1	20	ALS81056	EPM	2964	CR	9656	Y	
10	85	45	2	-5	15	16	-5	-1	30	ALS81056	EPM	2964	CR	9656	Y	
40	95	210	2	-5	20	-4	5	-1	20	ALS81056	EPM	2964	CR	9656	Y	
40	105	310	2	-5	25	4	-5	-1	10	ALS81056	EPM	2964	CR	9656	Y	
10	40	55	1	-5	20	-4	5	-1	20	ALS81056	EPM	2964	CR	9656	Y	
20	35	55	1	20	15	-4	-5	-1	20	ALS81056	EPM	2964	CR	9656	Y	
60	55	95	1	-5	25	-4	20	-1	10	ALS81056	EPM	2964	CR	9656	Y	
20	45	105	1	-5	15	-4	-5	-1	20	ALS81056	EPM	2964	CR	9656	Y	
60	145	135	1	-5	10	-4	5	-1	10	ALS81056	EPM	2964	CR	9656	Y	
25	60	160	1	-5	10	-4	15	-1	10	ALS81056	EPM	2964	CR	9656	Y	
20	75	75	2	10	25	8	-5	-1	20	ALS81056	EPM	2964	CR	9656	Y	
85	90	290	1	-5	15	-4	10	-1	10	ALS81056	EPM	2964	CR	9656	Y	
45	30	65	1	-5	15	-4	5	-1	-10	ALS81056	EPM	2964	CR	9656	Y	
30	35	85	1	-5	10	-4	-5	-1	10	ALS81056	EPM	2964	CR	9656	Y	

30	40	85	1	-5	15	-4	10	-1	-10	ALS81056	EPM	2964	CR	9656	Y
10	20	80	2	-5	10	-4	10	-1	-10	ALS81056	EPM	2964	CR	9656	Y
10	30	150	1	-5	15	-4	5	-1	-10	ALS81056	EPM	2964	CR	9656	Y
10	40	135	1	-5	10	4	10	-1	-10	ALS81056	EPM	2964	CR	9656	Y
60	135	285	2	-5	25	-4	20	-1	10	ALS81056	EPM	2964	CR	9656	Y
20	60	220	1	25	15	-4	10	-1	10	ALS81056	EPM	2964	CR	9656	Y
60	45	105	1	-5	20	4	15	-1	-10	ALS81056	EPM	2964	CR	9656	Y
30	50	70	1	-5	15	8	5	-1	-10	ALS81056	EPM	2964	CR	9656	Y
15	80	180	1	-5	20	4	10	-1	10	ALS81056	EPM	2964	CR	9656	Y
15	55	70	1	-5	20	4	10	-1	10	ALS81056	EPM	2964	CR	9656	Y
10	35	55	1	-5	15	-4	5	-1	10	ALS81056	EPM	2964	CR	9656	Y
15	40	105	1	-5	15	12	5	-1	-10	ALS81056	EPM	2964	CR	9656	Y
25	55	75	1	-5	10	-4	10	-1	10	ALS81056	EPM	2964	CR	9656	Y
15	45	165	1	-5	15	-4	-5	-1	10	ALS81056	EPM	2964	CR	9656	Y
90	160	305	2	-5	20	-4	30	-1	-10	ALS81056	EPM	2964	CR	9656	Y
20	45	90	1	-5	15	4	-5	-1	-10	ALS81056	EPM	2964	CR	9656	Y
35	35	55	1	-5	15	8	-5	-1	10	ALS81056	EPM	2964	CR	9656	Y
20	30	50	1	-5	15	-4	-5	-1	10	ALS81056	EPM	2964	CR	9656	Y
110	35	60	1	-5	15	-4	5	-1	-10	ALS81056	EPM	2964	CR	9656	Y
25	30	25	1	-5	15	-4	5	-1	10	ALS81056	EPM	2964	CR	9656	Y
20	60	80	-1	-5	20	-4	-5	-1	-10	ALS81056	EPM	2964	CR	9656	Y
10	50	80	1	-5	10	-4	-5	-1	10	ALS81056	EPM	2964	CR	9656	Y
5	55	100	1	-5	10	-4	-5	-1	-10	ALS81056	EPM	2964	CR	9656	Y
20	100	125	1	-5	10	-4	-5	-1	-10	ALS81056	EPM	2964	CR	9656	Y
30	105	175	1	-5	10	-4	5	-1	10	ALS81056	EPM	2964	CR	9656	Y
30	100	145	1	-5	10	-4	10	-1	-10	ALS81056	EPM	2964	CR	9656	Y
20	35	105	1	5	10	-4	5	-1	10	ALS81056	EPM	2964	CR	9656	Y
10	40	25	1	15	25	-4	5	-1	20	ALS81056	EPM	2964	CR	9656	Y
10	40	40	1	10	5	-4	-5	-1	-10	ALS81056	EPM	2964	CR	9656	Y
10	30	20	1	-5	10	4	-5	-1	10	ALS81056	EPM	2964	CR	9656	Y
40	75	115	1	-5	15	4	15	-1	10	ALS81056	EPM	2964	CR	9656	Y
15	50	65	1	15	10	-4	-5	-1	20	ALS81056	EPM	2964	CR	9656	Y
10	30	50	1	-5	10	-4	-5	-1	10	ALS81056	EPM	2964	CR	9656	Y

15	40	35	1	-5	10	4	-5	-1	10	ALS81056	EPM	2964	CR	9656	Y
10	30	45	1	15	10	-4	-5	-1	-10	ALS81056	EPM	2964	CR	9656	Y
20	40	60	1	-5	10	-4	5	-1	-10	ALS81056	EPM	2964	CR	9656	Y
40	55	65	1	-5	15	-4	-5	-1	-10	ALS81056	EPM	2964	CR	9656	Y
10	55	15	1	10	25	8	5	-1	20	ALS81056	EPM	2964	CR	9656	Y
10	25	15	1	-5	10	-4	-5	-1	10	ALS81056	EPM	2964	CR	9656	Y
10	25	40	-1	15	10	-4	-5	-1	-10	ALS81056	EPM	2964	CR	9656	Y
10	35	25	1	-5	10	-4	5	-1	-10	ALS81056	EPM	2964	CR	9656	Y
10	30	25	1	30	10	-4	5	-1	10	ALS81056	EPM	2964	CR	9656	Y
10	20	15	1	5	10	-4	-5	-1	-10	ALS81056	EPM	2964	CR	9656	Y
10	25	25	1	5	1	-4	-5	-1	-10	ALS81056	EPM	2964	CR	9656	Y
10	40	45	1	20	10	-4	-5	-1	10	ALS81056	EPM	2964	CR	9656	Y
20	55	60	1	10	10	4	-5	-1	-10	ALS81056	EPM	2964	CR	9656	Y
2	35	15	1	15	20	-4	5	-1	15	ALS81056	EPM	2964	CR	9656	Y
5	40	15	1	15	20	4	10	-1	20	ALS81056	EPM	2964	CR	9656	Y
5	40	15	1	25	25	-4	5	-1	30	ALS81056	EPM	2964	CR	9656	Y
15	125	15	1	15	30	32	5	-1	20	ALS81056	EPM	2964	CR	9656	Y
15	160	40	1	10	20	4	10	-1	20	ALS81056	EPM	2964	CR	9656	Y

# **APPENDIX 3**

## Stream Sediment Sampling

Prospect_Code	Company	Sheet_Number	Sample	Data_Type	Mesh	Sample_ID	Grid_ID	Locality	Country	State	Amg_N	Amg_E	Sampler
ACBR	ACM	8754	59131	BCL	N/A	7505	AMG2		AUS	QLD	7584321	721630	
ACBR	ACM	8754	59132	BCL	N/A	7506	AMG2		AUS	QLD	7584331	721827	
ACBR	ACM	8754	59137	BCL	N/A	7511	AMG2		AUS	QLD	7584808	724086	
ACBR	ACM	8754	59138	BCL	N/A	7512	AMG2		AUS	QLD	7585022	724197	
ACBR	ACM	8754	59139	BCL	N/A	7513	AMG2		AUS	QLD	7587589	721672	
ACBR	ACM	8754	59140	BCL	N/A	7514	AMG2		AUS	QLD	7587283	721679	
ACBR	ACM	8754	59141	BCL	N/A	7515	AMG2		AUS	QLD	7585790	720504	
ACBR	ACM	8754	59142	BCL	N/A	7516	AMG2		AUS	QLD	7585883	720613	
ACBR	ACM	8754	59143	BCL	N/A	7517	AMG2		AUS	QLD	7586878	720820	
ACBR	ACM	8754	59144	BCL	N/A	7518	AMG2		AUS	QLD	7588452	720211	
ACBR	ACM	8754	59145	BCL	N/A	7519	AMG2		AUS	QLD	7588992	719832	
ACBR	ACM	8754	59146	BCL	N/A	7520	AMG2		AUS	QLD	7589614	720281	
ACBR	ACM	8754	59147	BCL	N/A	7521	AMG2		AUS	QLD	7589298	720187	
ACBR	ACM	8754	59148	BCL	N/A	7522	AMG2		AUS	QLD	7589071	721575	
ACBR	ACM	8754	59149	BCL	N/A	7523	AMG2		AUS	QLD	7588874	721585	
ACBR	ACM	8754	59150	BCL	N/A	7524	AMG2		AUS	QLD	7589960	720516	
ACBR	ACM	8754	59151	BCL	N/A	7525	AMG2		AUS	QLD	7587824	719637	
ACBR	ACM	8754	59152	BCL	N/A	7526	AMG2		AUS	QLD	7587932	719751	
ACBR	ACM	8754	59153	BCL	N/A	7527	AMG2		AUS	QLD	7586934	720128	
ACBR	ACM	8754	59154	BCL	N/A	7528	AMG2		AUS	QLD	7590825	720479	
ACBR	ACM	8754	59155	BCL	N/A	7529	AMG2		AUS	QLD	7590555	720697	
ACBR	ACM	8754	59156	BCL	N/A	7530	AMG2		AUS	QLD	7591280	722204	
ACBR	ACM	8754	59157	BCL	N/A	7531	AMG2		AUS	QLD	7591176	722348	
ACBR	ACM	8754	59158	BCL	N/A	7532	AMG2		AUS	QLD	7591047	722060	
ACBR	ACM	8754	59159	BCL	N/A	7533	AMG2		AUS	QLD	7590891	722248	
ACBR	ACM	8754	59160	BCL	N/A	7534	AMG2		AUS	QLD	7589467	723769	
ACBR	ACM	8754	59163	BCL	N/A	7537	AMG2		AUS	QLD	7590587	719701	
ACBR	ACM	8754	59164	BCL	N/A	7538	AMG2		AUS	QLD	7590816	719683	
ACBR	ACM	8754	59165	BCL	N/A	7539	AMG2		AUS	QLD	7590990	719777	
ACBR	ACM	8754	59166	BCL	N/A	7540	AMG2		AUS	QLD	7591269	718840	
ACBR	ACM	8754	59167	BCL	N/A	7541	AMG2		AUS	QLD	7591853	719083	
ACBR	ACM	8754	59168	BCL	N/A	7542	AMG2		AUS	QLD	7591559	719312	

ACBR	ACM	8754	69725 BCL	N/A	7713 AMG2		AUS	QLD	7584865	727901
ACBR	ACM	8754	69726 BCL	N/A	7714 AMG2		AUS	QLD	7584937	729339
BENMOHR	AXIS	8655	BMD-01 SSS	-80	1267869 AMG	BONG BONG	AUS	QLD	7645973	689623
CACO	CRA	8654	114602 SSS	-80#	160807 AMG2		AUS	QLD	7607462	704443
CACO	CRA	8654	114603 BULK	N/A	160808 AMG2		AUS	QLD	7607260	704153
CACO	CRA	8654	114604 BULK	N/A	160809 AMG2		AUS	QLD	7607302	704541
CACO	CRA	8654	114605 BULK	N/A	160810 AMG2		AUS	QLD	7607300	704941
CACO	CRA	8654	114606 BULK	N/A	160811 AMG2		AUS	QLD	7607417	705536
CACO	CRA	8654	114607 BULK	N/A	160812 AMG2		AUS	QLD	7607442	705892
CACO	CRA	8654	114608 BULK	N/A	160813 AMG2		AUS	QLD	7607467	706268
CACO	CRA	8654	114611 BULK	N/A	160814 AMG2		AUS	QLD	7607839	706809
CACO	CRA	8654	158944 SSS	-80#	160906 AMG2		AUS	QLD	7604122	705882
CACO	CRA	8654	158947 SSS	-80#	160909 AMG2		AUS	QLD	7603097	706143
CACO	CRA	8654	158960 SSS	-80#	160921 AMG2		AUS	QLD	7610157	701141
CACO	CRA	8654	158961 SSS	-80#	160922 AMG2		AUS	QLD	7610000	701030
CACO	CRA	8754	113637 SSS	-80#	161368 AMG2		AUS	QLD	7606199	718155
CACO	CRA	8754	113638 SSS	-80#	161369 AMG2		AUS	QLD	7606729	717499
CACO	CRA	8754	113639 SSS	-80#	161370 AMG2		AUS	QLD	7607882	716499
CACO	CRA	8754	113640 SSS	-80#	161371 AMG2		AUS	QLD	7609658	717745
CACO	CRA	8754	113641 SSS	-80#	161372 AMG2		AUS	QLD	7610466	719171
CACO	CRA	8754	113643 SSS	-80#	161374 AMG2		AUS	QLD	7612203	714988
CACO	CRA	8754	113645 SSS	-80#	161375 AMG2		AUS	QLD	7603301	723787
CACO	CRA	8754	113646 SSS	-80#	161376 AMG2		AUS	QLD	7601674	723378
CACO	CRA	8754	113647 SSS	-80#	161377 AMG2		AUS	QLD	7601336	723364
CACO	CRA	8754	113649 SSS	-80#	161378 AMG2		AUS	QLD	7598403	725965
CACO	CRA	8754	113650 SSS	-80#	161379 AMG2		AUS	QLD	7597922	726708
CACO	CRA	8754	113651 SSS	-80#	161380 AMG2		AUS	QLD	7595464	726919
CACO	CRA	8754	113652 SSS	-80#	161381 AMG2		AUS	QLD	7595574	726677
CACO	CRA	8754	113653 SSS	-80#	161382 AMG2		AUS	QLD	7595216	726867
CACO	CRA	8754	113654 SSS	-80#	161383 AMG2		AUS	QLD	7594773	726292
CACO	CRA	8754	113655 SSS	-80#	161384 AMG2		AUS	QLD	7594296	726219
CACO	CRA	8754	113656 SSS	-80#	161385 AMG2		AUS	QLD	7594558	726074
CACO	CRA	8754	113657 SSS	-80#	161386 AMG2		AUS	QLD	7594821	727068



CACO	CRA	8754	113658	SSS	-80#	161387	AMG2	AUS	QLD	7594681	726979
CACO	CRA	8754	113659	SSS	-80#	161388	AMG2	AUS	QLD	7596843	726149
CACO	CRA	8754	113660	SSS	-80#	161389	AMG2	AUS	QLD	7607456	709187
CACO	CRA	8754	113661	SSS	-80#	161390	AMG2	AUS	QLD	7606147	707797
CACO	CRA	8754	113662	SSS	-80#	161391	AMG2	AUS	QLD	7605373	707832
CACO	CRA	8754	113663	SSS	-80#	161392	AMG2	AUS	QLD	7604200	707926
CACO	CRA	8754	113664	SSS	-80#	161393	AMG2	AUS	QLD	7603379	707485
CACO	CRA	8754	113668	SSS	-80#	161394	AMG2	AUS	QLD	7595674	716220
CACO	CRA	8754	113669	SSS	-80#	161395	AMG2	AUS	QLD	7595528	716202
CACO	CRA	8754	113670	SSS	-80#	161396	AMG2	AUS	QLD	7595009	717861
CACO	CRA	8754	113671	SSS	-80#	161397	AMG2	AUS	QLD	7594780	717824
CACO	CRA	8754	113672	SSS	-80#	161398	AMG2	AUS	QLD	7595049	718495
CACO	CRA	8754	113673	SSS	-80#	161399	AMG2	AUS	QLD	7597881	720496
CACO	CRA	8754	113674	SSS	-80#	161400	AMG2	AUS	QLD	7597557	720482
CACO	CRA	8754	113675	BULK	N/A	161401	AMG2	AUS	QLD	7597219	719736
CACO	CRA	8754	113676	SSS	-80#	161402	AMG2	AUS	QLD	7596203	719588
CACO	CRA	8754	113677	BULK	N/A	161403	AMG2	AUS	QLD	7596482	719543
CACO	CRA	8754	113678	SSS	-80#	161404	AMG2	AUS	QLD	7596324	719740
CACO	CRA	8754	113679	SSS	-80#	161405	AMG2	AUS	QLD	7599215	722424
CACO	CRA	8754	113680	SSS	-80#	161406	AMG2	AUS	QLD	7602273	717340
CACO	CRA	8754	113681	SSS	-80#	161407	AMG2	AUS	QLD	7602177	717112
CACO	CRA	8754	113682	SSS	-80#	161408	AMG2	AUS	QLD	7600975	716432
CACO	CRA	8754	113683	SSS	-80#	161409	AMG2	AUS	QLD	7600760	716712
CACO	CRA	8754	113684	SSS	-80#	161410	AMG2	AUS	QLD	7600396	716225
CACO	CRA	8754	113685	SSS	-80#	161411	AMG2	AUS	QLD	7599883	716443
CACO	CRA	8754	113686	SSS	-80#	161412	AMG2	AUS	QLD	7599543	715740
CACO	CRA	8754	113687	SSS	-80#	161413	AMG2	AUS	QLD	7599373	715931
CACO	CRA	8754	113689	SSS	-80#	161414	AMG2	AUS	QLD	7598278	715181
CACO	CRA	8754	113690	SSS	-80#	161415	AMG2	AUS	QLD	7598207	714984
CACO	CRA	8754	113692	SSS	-80#	161416	AMG2	AUS	QLD	7606018	716048
CACO	CRA	8754	113693	SSS	-80#	161417	AMG2	AUS	QLD	7606420	713425
CACO	CRA	8754	113694	SSS	-80#	161418	AMG2	AUS	QLD	7605980	711511
CACO	CRA	8754	113695	SSS	-80#	161419	AMG2	AUS	QLD	7605552	711068

CACO	CRA	8754	113696	SSS	-80#	161420	AMG2	AUS	QLD	7605476	710929
CACO	CRA	8754	113697	SSS	-80#	161421	AMG2	AUS	QLD	7605589	710738
CACO	CRA	8754	113698	SSS	-80#	161422	AMG2	AUS	QLD	7606297	711598
CACO	CRA	8754	113699	SSS	-80#	161423	AMG2	AUS	QLD	7603635	709331
CACO	CRA	8754	113778	SSS	-80#	161436	AMG2	AUS	QLD	7603856	709254
CACO	CRA	8754	113779	SSS	-80#	161437	AMG2	AUS	QLD	7604141	708936
CACO	CRA	8754	113780	SSS	-80#	161438	AMG2	AUS	QLD	7603390	709910
CACO	CRA	8754	114558	SSS	-80#	161462	AMG2	AUS	QLD	7600654	728923
CACO	CRA	8754	114564	SSS	-80#	161468	AMG2	AUS	QLD	7595697	731413
CACO	CRA	8754	114565	BULK	N/A	161469	AMG2	AUS	QLD	7595620	731604
CACO	CRA	8754	114566	SSS	-80#	161470	AMG2	AUS	QLD	7596892	731877
CACO	CRA	8754	114567	SSS	-80#	161471	AMG2	AUS	QLD	7596108	731962
CACO	CRA	8754	114568	BULK	N/A	161472	AMG2	AUS	QLD	7596611	732009
CACO	CRA	8754	114589	SSS	-80#	161493	AMG2	AUS	QLD	7610609	718428
CACO	CRA	8754	114592	SSS	-80#	161496	AMG2	AUS	QLD	7610125	711179
CACO	CRA	8754	114593	SSS	-80#	161497	AMG2	AUS	QLD	7610983	709466
CACO	CRA	8754	114594	SSS	-80#	161498	AMG2	AUS	QLD	7611250	709295
CACO	CRA	8754	114595	SSS	-80#	161499	AMG2	AUS	QLD	7611024	708691
CACO	CRA	8754	114596	BULK	N/A	161500	AMG2	AUS	QLD	7610433	708428
CACO	CRA	8754	114597	BULK	N/A	161501	AMG2	AUS	QLD	7610211	708325
CACO	CRA	8754	114598	BULK	N/A	161502	AMG2	AUS	QLD	7612273	709489
CACO	CRA	8754	114599	BULK	N/A	161503	AMG2	AUS	QLD	7608851	708187
CACO	CRA	8754	114600	SSS	-80#	161504	AMG2	AUS	QLD	7609449	708196
CACO	CRA	8754	114601	SSS	-80#	161505	AMG2	AUS	QLD	7609775	707580
CACO	CRA	8754	114612	BULK	N/A	161506	AMG2	AUS	QLD	7606982	708492
CACO	CRA	8754	114623	SSS	-80#	161507	AMG2	AUS	QLD	7591602	730127
CACO	CRA	8754	114624	SSS	-80#	161508	AMG2	AUS	QLD	7591334	730201
CACO	CRA	8754	114625	SSS	-80#	161509	AMG2	AUS	QLD	7591615	731679
CACO	CRA	8754	114626	BULK	N/A	161510	AMG2	AUS	QLD	7591474	730908
CACO	CRA	8754	114627	SSS	-80#	161511	AMG2	AUS	QLD	7591356	731461
CACO	CRA	8754	114629	SSS	-80#	161512	AMG2	AUS	QLD	7592583	732221
CACO	CRA	8754	114630	SSS	-80#	161513	AMG2	AUS	QLD	7592118	732357
CACO	CRA	8754	114631	SSS	-80#	161514	AMG2	AUS	QLD	7592024	732146

CACO	CRA	8754	114651 BULK	N/A	161533 AMG2	AUS	QLD	7585067	731322
CACO	CRA	8754	114652 SSS	-80#	161534 AMG2	AUS	QLD	7584223	730387
CACO	CRA	8754	114661 SSS	-80#	161543 AMG2	AUS	QLD	7584918	729317
CACO	CRA	8754	114662 SSS	-80#	161544 AMG2	AUS	QLD	7585884	729389
CACO	CRA	8754	114663 SSS	-80#	161545 AMG2	AUS	QLD	7585816	729127
CACO	CRA	8754	114664 SSS	-80#	161546 AMG2	AUS	QLD	7585473	729086
CACO	CRA	8754	114665 SSS	-80#	161547 AMG2	AUS	QLD	7586599	729064
CACO	CRA	8754	114666 SSS	-80#	161548 AMG2	AUS	QLD	7586854	729008
CACO	CRA	8754	114667 SSS	-80#	161549 AMG2	AUS	QLD	7586800	729300
CACO	CRA	8754	114668 SSS	-80#	161550 AMG2	AUS	QLD	7587287	727250
CACO	CRA	8754	114669 SSS	-80#	161551 AMG2	AUS	QLD	7587445	727411
CACO	CRA	8754	114670 SSS	-80#	161552 AMG2	AUS	QLD	7587733	727165
CACO	CRA	8754	114671 SSS	-80#	161553 AMG2	AUS	QLD	7589110	727551
CACO	CRA	8754	114672 SSS	-80#	161554 AMG2	AUS	QLD	7589578	727040
CACO	CRA	8754	114673 SSS	-80#	161555 AMG2	AUS	QLD	7589503	726874
CACO	CRA	8754	114674 SSS	-80#	161556 AMG2	AUS	QLD	7589714	725940
CACO	CRA	8754	114675 SSS	-80#	161557 AMG2	AUS	QLD	7590470	726023
CACO	CRA	8754	114676 SSS	-80#	161558 AMG2	AUS	QLD	7590285	726206
CACO	CRA	8754	114678 SSS	-80#	161560 AMG2	AUS	QLD	7585122	732505
CACO	CRA	8754	114679 SSS	-80#	161561 AMG2	AUS	QLD	7584213	730813
CACO	CRA	8754	114680 SSS	-80#	161562 AMG2	AUS	QLD	7586802	731558
CACO	CRA	8754	114681 SSS	-80#	161563 AMG2	AUS	QLD	7586642	731614
CACO	CRA	8754	114682 SSS	-80#	161564 AMG2	AUS	QLD	7586614	731983
CACO	CRA	8754	114683 SSS	-80#	161565 AMG2	AUS	QLD	7586956	732711
CACO	CRA	8754	114687 SSS	-80#	161569 AMG2	AUS	QLD	7586186	731407
CACO	CRA	8754	157528 SSS	-80#	161588 AMG2	AUS	QLD	7597169	723083
CACO	CRA	8754	157529 SSS	-80#	161589 AMG2	AUS	QLD	7593304	722167
CACO	CRA	8754	157530 SSS	-80#	161590 AMG2	AUS	QLD	7593112	723284
CACO	CRA	8754	157531 SSS	-80#	161591 AMG2	AUS	QLD	7593621	722398
CACO	CRA	8754	157532 SSS	-80#	161592 AMG2	AUS	QLD	7592619	724584
CACO	CRA	8754	157533 SSS	-80#	161593 AMG2	AUS	QLD	7592709	725157
CACO	CRA	8754	157534 SSS	-80#	161594 AMG2	AUS	QLD	7592341	725090
CACO	CRA	8754	157535 SSS	-80#	161595 AMG2	AUS	QLD	7594875	723619

CACO	CRA	8754	157536	SSS	-80#	161596	AMG2	AUS	QLD	7595162	723627
CACO	CRA	8754	157838	SSS	-80#	161640	AMG2	AUS	QLD	7585273	721492
CACO	CRA	8754	157839	SSS	-80#	161641	AMG2	AUS	QLD	7585144	721631
CACO	CRA	8754	157841	SSS	-80#	161642	AMG2	AUS	QLD	7584599	721474
CACO	CRA	8754	157843	SSS	-80#	161644	AMG2	AUS	QLD	7584367	721834
CACO	CRA	8754	157898	SSS	-80#	161698	AMG2	AUS	QLD	7584816	724585
CACO	CRA	8754	157899	SSS	-80#	161699	AMG2	AUS	QLD	7584644	724616
CACO	CRA	8754	157900	SSS	-80#	161700	AMG2	AUS	QLD	7584601	724444
CACO	CRA	8754	157921	SSS	-80#	161721	AMG2	AUS	QLD	7585126	725586
CACO	CRA	8754	157922	SSS	-80#	161722	AMG2	AUS	QLD	7585080	725738
CACO	CRA	8754	157930	SSS	-80#	161730	AMG2	AUS	QLD	7590701	719634
CACO	CRA	8754	157932	SSS	-80#	161732	AMG2	AUS	QLD	7591038	719483
CACO	CRA	8754	157933	SSS	-80#	161733	AMG2	AUS	QLD	7591617	719320
CACO	CRA	8754	157934	SSS	-80#	161734	AMG2	AUS	QLD	7591573	719180
CACO	CRA	8754	157951	SSS	-80#	161751	AMG2	AUS	QLD	7590927	719801
CACO	CRA	8754	157952	SSS	-80#	161752	AMG2	AUS	QLD	7590440	720217
CACO	CRA	8754	157985	SSS	-80#	161773	AMG2	AUS	QLD	7587242	726538
CACO	CRA	8754	157986	SSS	-80#	161774	AMG2	AUS	QLD	7586691	726241
CACO	CRA	8754	157987	SSS	-80#	161775	AMG2	AUS	QLD	7586645	726450
CACO	CRA	8754	158822	SSS	-80#	161806	AMG2	AUS	QLD	7587842	719633
CACO	CRA	8754	158823	SSS	-80#	161807	AMG2	AUS	QLD	7588476	720137
CACO	CRA	8754	158824	SSS	-80#	161808	AMG2	AUS	QLD	7589270	720239
CACO	CRA	8754	158825	SSS	-80#	161809	AMG2	AUS	QLD	7589955	720480
CACO	CRA	8754	158826	SSS	-80#	161810	AMG2	AUS	QLD	7586906	720042
CACO	CRA	8754	158827	SSS	-80#	161811	AMG2	AUS	QLD	7587147	720114
CACO	CRA	8754	158828	SSS	-80#	161812	AMG2	AUS	QLD	7586892	720958
CACO	CRA	8754	158829	SSS	-80#	161813	AMG2	AUS	QLD	7587115	720991
CACO	CRA	8754	158830	SSS	-80#	161814	AMG2	AUS	QLD	7587033	720794
CACO	CRA	8754	158831	SSS	-80#	161815	AMG2	AUS	QLD	7585809	720472
CACO	CRA	8754	158880	SSS	-80#	161846	AMG2	AUS	QLD	7596244	711667
CACO	CRA	8754	158886	SSS	-80#	161850	AMG2	AUS	QLD	7602410	710904
CACO	CRA	8754	158887	SSS	-80#	161851	AMG2	AUS	QLD	7602087	710975
CACO	CRA	8754	158991	SSS	-80#	161859	AMG2	AUS	QLD	7604354	712679

CACO	CRA	8754	A113646	SSS	-80#	161884	AMG2	AUS	QLD	7601674	723378
CACO	CRA	8754	A113670	SSS	-80#	161885	AMG2	AUS	QLD	7595009	717861
CACO	CRA	8754	A113672	SSS	-80#	161886	AMG2	AUS	QLD	7595049	718495
CACO	CRA	8754	A113690	SSS	-80#	161887	AMG2	AUS	QLD	7598207	714984
CACO	CRA	8754	A113695	SSS	-80#	161888	AMG2	AUS	QLD	7605552	711068
CACO	CRA	8754	A114594	SSS	-80#	161894	AMG2	AUS	QLD	7611250	709295
CACO	CRA	8754	A114627	SSS	-80#	161895	AMG2	AUS	QLD	7591356	731461
CACO	CRA	8754	A114631	SSS	-80#	161896	AMG2	AUS	QLD	7592024	732146
CACO	CRA	8754	A114666	SSS	-80#	161901	AMG2	AUS	QLD	7586854	729008
CACO	CRA	8754	A114667	SSS	-80#	161902	AMG2	AUS	QLD	7586800	729300
CACO	CRA	8754	A157843	SSS	-80#	161908	AMG2	AUS	QLD	7584367	721834
CACO	CRA	8754	A158829	SSS	-80#	161926	AMG2	AUS	QLD	7587115	720991
CAUR	CRA	8654	168575	SSS	-80#	190558	AMG2	AUS	QLD	7620072	706880
CAUR	CRA	8654	168577	SSS	-80#	190559	AMG2	AUS	QLD	7619191	706423
CAUR	CRA	8654	168578	SSS	-80#	190560	AMG2	AUS	QLD	7618958	706584
CAUR	CRA	8654	168579	SSS	-80#	190561	AMG2	AUS	QLD	7615247	706407
CAUR	CRA	8654	168580	SSS	-80#	190562	AMG2	AUS	QLD	7615659	706447
CAUR	CRA	8654	168581	SSS	-80#	190563	AMG2	AUS	QLD	7616238	706764
CAUR	CRA	8654	168596	SSS	-80#	190564	AMG2	AUS	QLD	7621114	705075
CAUR	CRA	8654	168599	SSS	-80#	190565	AMG2	AUS	QLD	7619809	699120
CAUR	CRA	8654	168600	SSS	-80#	190566	AMG2	AUS	QLD	7619587	699115
CAUR	CRA	8654	168601	SSS	-80#	190567	AMG2	AUS	QLD	7619843	699330
CAUR	CRA	8654	168602	SSS	-80#	190568	AMG2	AUS	QLD	7619111	700009
CAUR	CRA	8654	168603	SSS	-80#	190569	AMG2	AUS	QLD	7618954	700521
CAUR	CRA	8654	168604	SSS	-80#	190570	AMG2	AUS	QLD	7618947	701202
CAUR	CRA	8654	168605	SSS	-80#	190571	AMG2	AUS	QLD	7619397	701268
CAUR	CRA	8654	168606	SSS	-80#	190572	AMG2	AUS	QLD	7619088	703336
CAUR	CRA	8654	168607	SSS	-80#	190573	AMG2	AUS	QLD	7619327	703468
CAUR	CRA	8654	168608	SSS	-80#	190574	AMG2	AUS	QLD	7618809	704870
CAUR	CRA	8654	168844	SSS	-80#	190661	AMG2	AUS	QLD	7612120	697151
CAUR	CRA	8654	168845	SSS	-80#	190662	AMG2	AUS	QLD	7612027	697034
CAUR	CRA	8654	168846	SSS	-80#	190663	AMG2	AUS	QLD	7612475	697527
CAUR	CRA	8654	168847	SSS	-80#	190664	AMG2	AUS	QLD	7614490	699190

CAUR	CRA	8654	168848	SSS	-80#	190665	AMG2	AUS	QLD	7614639	699047
CAUR	CRA	8654	168849	SSS	-80#	190666	AMG2	AUS	QLD	7614106	698985
CAUR	CRA	8654	168875	SSS	-80#	190670	AMG2	AUS	QLD	7613448	696930
CAUR	CRA	8654	168886	SSS	-80#	190681	AMG2	AUS	QLD	7610611	700657
CAUR	CRA	8654	168887	SSS	-80#	190682	AMG2	AUS	QLD	7610701	700589
CAUR	CRA	8654	168888	SSS	-80#	190683	AMG2	AUS	QLD	7610349	700385
CAUR	CRA	8654	168922	SSS	-80#	190699	AMG2	AUS	QLD	7613840	698305
CAUR	CRA	8654	168924	SSS	-80#	190701	AMG2	AUS	QLD	7610647	696994
CAUR	CRA	8655	168146	SSS	-80#	190802	AMG2	AUS	QLD	7629712	702468
CAUR	CRA	8655	168147	SSS	-80#	190803	AMG2	AUS	QLD	7629565	702607
CAUR	CRA	8655	168148	SSS	-80#	190804	AMG2	AUS	QLD	7627544	704424
CAUR	CRA	8655	168149	SSS	-80#	190805	AMG2	AUS	QLD	7627386	704277
CAUR	CRA	8655	168150	SSS	-80#	190806	AMG2	AUS	QLD	7626502	704379
CAUR	CRA	8655	168378	SSS	-80#	190836	AMG2	AUS	QLD	7645845	688271
CAUR	CRA	8655	168379	SSS	-80#	190837	AMG2	AUS	QLD	7645661	688288
CAUR	CRA	8655	168380	SSS	-80#	190838	AMG2	AUS	QLD	7645669	688148
CAUR	CRA	8655	168381	SSS	-80#	190839	AMG2	AUS	QLD	7647963	687616
CAUR	CRA	8655	168382	SSS	-80#	190840	AMG2	AUS	QLD	7647905	687730
CAUR	CRA	8655	168383	SSS	-80#	190841	AMG2	AUS	QLD	7647734	686597
CAUR	CRA	8655	168384	SSS	-80#	190842	AMG2	AUS	QLD	7647989	686536
CAUR	CRA	8655	168389	SSS	-80#	190847	AMG2	AUS	QLD	7645598	689807
CAUR	CRA	8655	168390	SSS	-80#	190848	AMG2	AUS	QLD	7645874	689594
CAUR	CRA	8655	168391	SSS	-80#	190849	AMG2	AUS	QLD	7646886	688926
CAUR	CRA	8655	168392	SSS	-80#	190850	AMG2	AUS	QLD	7647313	688835
CAUR	CRA	8655	168393	SSS	-80#	190851	AMG2	AUS	QLD	7648837	688434
CAUR	CRA	8655	168394	SSS	-80#	190852	AMG2	AUS	QLD	7649123	688745
CAUR	CRA	8655	168395	BULK	N/A	190853	AMG2	AUS	QLD	7650700	687941
CAUR	CRA	8655	168397	BULK	N/A	190855	AMG2	AUS	QLD	7653818	688029
CAUR	CRA	8655	168398	BULK	N/A	190856	AMG2	AUS	QLD	7652751	688038
CAUR	CRA	8655	168504	SSS	-80#	190861	AMG2	AUS	QLD	7630626	704585
CAUR	CRA	8655	168505	SSS	-80#	190862	AMG2	AUS	QLD	7629677	706810
CAUR	CRA	8655	168582	SSS	-80#	190863	AMG2	AUS	QLD	7624100	706194
CAUR	CRA	8655	168583	SSS	-80#	190864	AMG2	AUS	QLD	7624011	706072

CAUR	CRA	8655	168584	SSS	-80#	190865	AMG2	AUS	QLD	7623905	706733
CAUR	CRA	8655	168586	SSS	-80#	190866	AMG2	AUS	QLD	7624828	699092
CAUR	CRA	8655	168587	SSS	-80#	190867	AMG2	AUS	QLD	7624923	699150
CAUR	CRA	8655	168588	SSS	-80#	190868	AMG2	AUS	QLD	7624438	699426
CAUR	CRA	8655	168589	SSS	-80#	190869	AMG2	AUS	QLD	7624393	700367
CAUR	CRA	8655	168590	SSS	-80#	190870	AMG2	AUS	QLD	7624080	700568
CAUR	CRA	8655	168591	SSS	-80#	190871	AMG2	AUS	QLD	7623710	701710
CAUR	CRA	8655	168592	SSS	-80#	190872	AMG2	AUS	QLD	7623748	701850
CAUR	CRA	8655	168593	SSS	-80#	190873	AMG2	AUS	QLD	7623448	701924
CAUR	CRA	8655	168594	SSS	-80#	190874	AMG2	AUS	QLD	7622339	702368
CAUR	CRA	8655	168595	SSS	-80#	190875	AMG2	AUS	QLD	7622081	704890
CAUR	CRA	8655	168597	SSS	-80#	190876	AMG2	AUS	QLD	7623392	704663
CAUR	CRA	8655	168598	SSS	-80#	190877	AMG2	AUS	QLD	7623492	704823
CAUR	CRA	8655	168615	SSS	-80#	190878	AMG2	AUS	QLD	7628149	706177
CAUR	CRA	8655	168616	SSS	-80#	190879	AMG2	AUS	QLD	7628622	706733
CAUR	CRA	8655	171856	SSS	-80#	191104	AMG2	AUS	QLD	7627544	704424
CAUR	CRA	8655	171857	SSS	-80#	191105	AMG2	AUS	QLD	7627386	704277
CAUR	CRA	8655	171858	BULK	N/A	191106	AMG2	AUS	QLD	7627544	704424
CAUR	CRA	8655	171859	BULK	N/A	191107	AMG2	AUS	QLD	7626508	704373
CAUR	CRA	8655	171862	SSS	-80#	191110	AMG2	AUS	QLD	7630477	699352
CAUR	CRA	8655	171863	SSS	-80#	191111	AMG2	AUS	QLD	7630295	699974
CAUR	CRA	8655	171864	SSS	-80#	191112	AMG2	AUS	QLD	7630641	700555
CAUR	CRA	8655	171868	SSS	-80#	191116	AMG2	AUS	QLD	7627602	694953
CAUR	CRA	8655	171869	SSS	-80#	191117	AMG2	AUS	QLD	7627709	695126
CAUR	CRA	8655	171870	SSS	-80#	191118	AMG2	AUS	QLD	7628110	694976
CAUR	CRA	8655	171872	SSS	-80#	191119	AMG2	AUS	QLD	7629359	692301
CAUR	CRA	8655	171873	SSS	-80#	191120	AMG2	AUS	QLD	7628006	692742
CAUR	CRA	8655	171874	SSS	-80#	191121	AMG2	AUS	QLD	7627733	692577
CAUR	CRA	8655	171875	SSS	-80#	191122	AMG2	AUS	QLD	7626436	692478
CAUR	CRA	8655	171876	SSS	-80#	191123	AMG2	AUS	QLD	7626607	692491
CAUR	CRA	8655	171877	SSS	-80#	191124	AMG2	AUS	QLD	7629354	696249
CAUR	CRA	8655	171878	SSS	-80#	191125	AMG2	AUS	QLD	7628011	691789
CAUR	CRA	8655	171880	SSS	-80#	191127	AMG2	AUS	QLD	7627921	691611

CAUR	CRA	8655	171881	SSS	-80#	191128	AMG2	AUS	QLD	7628220	691540
CAUR	CRA	8655	171882	BULK	N/A	191129	AMG2	AUS	QLD	7628220	691540
CAUR	CRA	8655	171887	SSS	-80#	191134	AMG2	AUS	QLD	7627423	690563
CAUR	CRA	8655	171888	BULK	N/A	191135	AMG2	AUS	QLD	7627423	690563
CAUR	CRA	8655	171893	SSS	-80#	191140	AMG2	AUS	QLD	7625163	691934
CAUR	CRA	8655	171912	SSS	-80#	191160	AMG2	AUS	QLD	7628662	700745
CAUR	CRA	8655	171913	BULK	N/A	191161	AMG2	AUS	QLD	7628802	700771
CAUR	CRA	8655	171914	SSS	-80#	191162	AMG2	AUS	QLD	7628856	701312
CAUR	CRA	8655	171915	BULK	N/A	191163	AMG2	AUS	QLD	7628856	701312
CAUR	CRA	8655	171916	BULK	N/A	191164	AMG2	AUS	QLD	7628119	701199
CAUR	CRA	8655	171916A	SSS	-80#	191165	AMG2	AUS	QLD	7628119	701199
CAUR	CRA	8655	171917	BULK	N/A	191166	AMG2	AUS	QLD	7628296	701366
CAUR	CRA	8655	171918	SSS	-80#	191167	AMG2	AUS	QLD	7626393	705408
CAUR	CRA	8655	171951	SSS	-80#	191188	AMG2	AUS	QLD	7630384	692693
CAUR	CRA	8655	171955	SSS	-80#	191192	AMG2	AUS	QLD	7629089	690356
CAUR	CRA	8655	171980	SSS	-80#	191209	AMG2	AUS	QLD	7623826	694883
CAUR	CRA	8655	171981	SSS	-80#	191210	AMG2	AUS	QLD	7623693	694940
CAUR	CRA	8655	171982	SSS	-80#	191211	AMG2	AUS	QLD	7623658	694424
CAUR	CRA	8655	171983	SSS	-80#	191212	AMG2	AUS	QLD	7623477	694073
CAUR	CRA	8655	171984	SSS	-80#	191213	AMG2	AUS	QLD	7623863	693481
CAUR	CRA	8655	171985	SSS	-80#	191214	AMG2	AUS	QLD	7622723	692111
CAUR	CRA	8655	172075	SSS	-80#	191262	AMG2	AUS	QLD	7628937	693872
CAUR	CRA	8655	172076	SSS	-80#	191263	AMG2	AUS	QLD	7628822	693993
CAUR	CRA	8655	172077	SSS	-80#	191264	AMG2	AUS	QLD	7628394	694329
CAUR	CRA	8655	172078	SSS	-80#	191265	AMG2	AUS	QLD	7628457	694387
CAUR	CRA	8655	172079	SSS	-80#	191266	AMG2	AUS	QLD	7626762	696054
CAUR	CRA	8655	172080	SSS	-80#	191267	AMG2	AUS	QLD	7626622	695983
CAUR	CRA	8655	172082	SSS	-80#	191269	AMG2	AUS	QLD	7629655	693940
CAUR	CRA	8655	172083	SSS	-80#	191270	AMG2	AUS	QLD	7630255	691803
CAUR	CRA	8655	172084	SSS	-80#	191271	AMG2	AUS	QLD	7630325	691968
CAUR	CRA	8655	172517	SSS	-80#	191329	AMG2	AUS	QLD	7662891	678911
CAUR	CRA	8655	172518	SSS	-80#	191330	AMG2	AUS	QLD	7662114	679201
CAUR	CRA	8655	172524	SSS	-80#	191336	AMG2	AUS	QLD	7659652	679452



CAUR	CRA	8655	172534	SSS	-80#	191346	AMG2	AUS	QLD	7661644	677507
CAUR	CRA	8655	172535	SSS	-80#	191347	AMG2	AUS	QLD	7654372	685322
CAUR	CRA	8655	172536	SSS	-80#	191348	AMG2	AUS	QLD	7651768	683969
CAUR	CRA	8655	172537	SSS	-80#	191349	AMG2	AUS	QLD	7654800	682500
CAUR	CRA	8655	172538	SSS	-80#	191350	AMG2	AUS	QLD	7654209	682532
CAUR	CRA	8655	172539	SSS	-80#	191351	AMG2	AUS	QLD	7654173	682367
CAUR	CRA	8655	172540	SSS	-80#	191352	AMG2	AUS	QLD	7655295	681253
CAUR	CRA	8655	172541	SSS	-80#	191353	AMG2	AUS	QLD	7655622	680765
CAUR	CRA	8655	172542	SSS	-80#	191354	AMG2	AUS	QLD	7656468	680730
CAUR	CRA	8655	172543	SSS	-80#	191355	AMG2	AUS	QLD	7656450	678898
CAUR	CRA	8655	172544	SSS	-80#	191356	AMG2	AUS	QLD	7656622	678797
CAUR	CRA	8655	172545	SSS	-80#	191357	AMG2	AUS	QLD	7656045	682462
CAUR	CRA	8655	172548	SSS	-80#	191358	AMG2	AUS	QLD	7667285	681748
CAUR	CRA	8655	172554	SSS	-80#	191361	AMG2	AUS	QLD	7667164	681431
CAUR	CRA	8655	172562	SSS	-80#	191368	AMG2	AUS	QLD	7660322	684232
CAUR	CRA	8655	172616	SSS	-80#	191422	AMG2	AUS	QLD	7639580	689722
CAUR	CRA	8655	172617	SSS	-80#	191423	AMG2	AUS	QLD	7639720	689203
CAUR	CRA	8655	172618	SSS	-80#	191424	AMG2	AUS	QLD	7639994	689162
CAUR	CRA	8655	172619	SSS	-80#	191425	AMG2	AUS	QLD	7637290	687229
CAUR	CRA	8655	172620	SSS	-80#	191426	AMG2	AUS	QLD	7637282	687356
CAUR	CRA	8655	172621	SSS	-80#	191427	AMG2	AUS	QLD	7637756	687597
CAUR	CRA	8655	172622	SSS	-80#	191428	AMG2	AUS	QLD	7637849	687763
CAUR	CRA	8655	172623	SSS	-80#	191429	AMG2	AUS	QLD	7638800	686897
CAUR	CRA	8655	172624	SSS	-80#	191430	AMG2	AUS	QLD	7639441	687534
CAUR	CRA	8655	172625	SSS	-80#	191431	AMG2	AUS	QLD	7639557	687383
CAUR	CRA	8655	172626	SSS	-80#	191432	AMG2	AUS	QLD	7641700	684110
CAUR	CRA	8655	172627	SSS	-80#	191433	AMG2	AUS	QLD	7641217	683017
CAUR	CRA	8655	172628	SSS	-80#	191434	AMG2	AUS	QLD	7641277	682268
CAUR	CRA	8655	172629	SSS	-80#	191435	AMG2	AUS	QLD	7640226	681918
CAUR	CRA	8655	172633	SSS	-80#	191439	AMG2	AUS	QLD	7643399	683888
CAUR	CRA	8655	172634	SSS	-80#	191440	AMG2	AUS	QLD	7643340	684091
CAUR	CRA	8655	172636	SSS	-80#	191442	AMG2	AUS	QLD	7640912	685149
CAUR	CRA	8655	172643	SSS	-80#	191449	AMG2	AUS	QLD	7640150	684568

CAUR	CRA	8655	172644	SSS	-80#	191450	AMG2	AUS	QLD	7645903	682329
CAUR	CRA	8655	172663	SSS	-80#	191469	AMG2	AUS	QLD	7655174	685172
CAUR	CRA	8655	172664	BULK	N/A	191470	AMG2	AUS	QLD	7662711	677925
CAUR	CRA	8655	172669	SSS	-80#	191475	AMG2	AUS	QLD	7658292	685889
CAUR	CRA	8655	172670	SSS	-80#	191476	AMG2	AUS	QLD	7660548	679627
CAUR	CRA	8655	172671	SSS	-80#	191477	AMG2	AUS	QLD	7660929	679940
CAUR	CRA	8655	172673	SSS	-80#	191479	AMG2	AUS	QLD	7659205	678401
CAUR	CRA	8655	172674	SSS	-80#	191480	AMG2	AUS	QLD	7651502	681972
CAUR	CRA	8655	172675	SSS	-80#	191481	AMG2	AUS	QLD	7651726	681828
CAUR	CRA	8655	172685	SSS	-80#	191491	AMG2	AUS	QLD	7641550	681705
CAUR	CRA	8655	172688	SSS	-80#	191494	AMG2	AUS	QLD	7645839	682411
CAUR	CRA	8655	172701	BULK	N/A	191506	AMG2	AUS	QLD	7643211	682094
CAUR	CRA	8655	172728	SSS	-80#	191532	AMG2	AUS	QLD	7640848	689966
CAUR	CRA	8655	172774	SSS	-80#	191565	AMG2	AUS	QLD	7638370	687236
CAUR	CRA	8655	172775	SSS	-80#	191566	AMG2	AUS	QLD	7638757	686795
CAUR	CRA	8655	172778	SSS	-80#	191569	AMG2	AUS	QLD	7639062	686818
CAUR	CRA	8754	168521	SSS	-80#	191675	AMG2	AUS	QLD	7617396	718158
CAUR	CRA	8754	168522	SSS	-80#	191676	AMG2	AUS	QLD	7617490	718330
CAUR	CRA	8754	168523	SSS	-80#	191677	AMG2	AUS	QLD	7616754	715829
CAUR	CRA	8754	168524	SSS	-80#	191678	AMG2	AUS	QLD	7616678	715702
CAUR	CRA	8754	168525	SSS	-80#	191679	AMG2	AUS	QLD	7618574	715116
CAUR	CRA	8754	168526	SSS	-80#	191680	AMG2	AUS	QLD	7618396	715065
CAUR	CRA	8754	168527	SSS	-80#	191681	AMG2	AUS	QLD	7617176	717102
CAUR	CRA	8754	168528	SSS	-80#	191682	AMG2	AUS	QLD	7615742	718325
CAUR	CRA	8754	168538	SSS	-80#	191692	AMG2	AUS	QLD	7614486	719746
CAUR	CRA	8754	168539	SSS	-80#	191693	AMG2	AUS	QLD	7614683	719714
CAUR	CRA	8754	168540	SSS	-80#	191694	AMG2	AUS	QLD	7613061	715577
CAUR	CRA	8754	168541	SSS	-80#	191695	AMG2	AUS	QLD	7613359	715737
CAUR	CRA	8754	168542	SSS	-80#	191696	AMG2	AUS	QLD	7613365	715921
CAUR	CRA	8754	168543	SSS	-80#	191697	AMG2	AUS	QLD	7612332	714806
CAUR	CRA	8754	168544	SSS	-80#	191698	AMG2	AUS	QLD	7614483	709802
CAUR	CRA	8754	168545	SSS	-80#	191699	AMG2	AUS	QLD	7615686	709259
CAUR	CRA	8754	168546	SSS	-80#	191700	AMG2	AUS	QLD	7617613	708902

CAUR	CRA	8754	168547	SSS	-80#	191701	AMG2	AUS	QLD	7618334	710424
CAUR	CRA	8754	168548	SSS	-80#	191702	AMG2	AUS	QLD	7618524	710558
CAUR	CRA	8754	168549	SSS	-80#	191703	AMG2	AUS	QLD	7618371	708396
CAUR	CRA	8754	168550	SSS	-80#	191704	AMG2	AUS	QLD	7621034	708632
CAUR	CRA	8754	168576	SSS	-80#	191705	AMG2	AUS	QLD	7620231	707231
CAUR	CRA	8755	168506	SSS	-80#	191706	AMG2	AUS	QLD	7630454	707421
CAUR	CRA	8755	168507	SSS	-80#	191707	AMG2	AUS	QLD	7630351	707573
CAUR	CRA	8755	168508	SSS	-80#	191708	AMG2	AUS	QLD	7630663	708961
CAUR	CRA	8755	168509	SSS	-80#	191709	AMG2	AUS	QLD	7630901	709478
CAUR	CRA	8755	168510	SSS	-80#	191710	AMG2	AUS	QLD	7631798	710153
CAUR	CRA	8755	168511	SSS	-80#	191711	AMG2	AUS	QLD	7631575	710170
CAUR	CRA	8755	168512	SSS	-80#	191712	AMG2	AUS	QLD	7631558	710634
CAUR	CRA	8755	168513	SSS	-80#	191713	AMG2	AUS	QLD	7630253	710134
CAUR	CRA	8755	168514	SSS	-80#	191714	AMG2	AUS	QLD	7629779	710600
CAUR	CRA	8755	168515	SSS	-80#	191715	AMG2	AUS	QLD	7629204	711657
CAUR	CRA	8755	168551	SSS	-80#	191718	AMG2	AUS	QLD	7621669	708925
CAUR	CRA	8755	168552	SSS	-80#	191719	AMG2	AUS	QLD	7621978	708482
CAUR	CRA	8755	168553	SSS	-80#	191720	AMG2	AUS	QLD	7626878	713856
CAUR	CRA	8755	168554	SSS	-80#	191721	AMG2	AUS	QLD	7626769	714046
CAUR	CRA	8755	168555	SSS	-80#	191722	AMG2	AUS	QLD	7626684	713486
CAUR	CRA	8755	168556	SSS	-80#	191723	AMG2	AUS	QLD	7625728	713027
CAUR	CRA	8755	168557	SSS	-80#	191724	AMG2	AUS	QLD	7625194	712279
CAUR	CRA	8755	168558	SSS	-80#	191725	AMG2	AUS	QLD	7625451	712039
CAUR	CRA	8755	168559	SSS	-80#	191726	AMG2	AUS	QLD	7624725	710628
CAUR	CRA	8755	168560	SSS	-80#	191727	AMG2	AUS	QLD	7624762	710756
CAUR	CRA	8755	168561	SSS	-80#	191728	AMG2	AUS	QLD	7623351	710000
CAUR	CRA	8755	168562	SSS	-80#	191729	AMG2	AUS	QLD	7622895	709825
CAUR	CRA	8755	168563	SSS	-80#	191730	AMG2	AUS	QLD	7621921	714521
CAUR	CRA	8755	168564	SSS	-80#	191731	AMG2	AUS	QLD	7622022	714585
CAUR	CRA	8755	168565	SSS	-80#	191732	AMG2	AUS	QLD	7622190	714307
CAUR	CRA	8755	168566	SSS	-80#	191733	AMG2	AUS	QLD	7622117	713079
CAUR	CRA	8755	168567	SSS	-80#	191734	AMG2	AUS	QLD	7622438	711963
CAUR	CRA	8755	168568	SSS	-80#	191735	AMG2	AUS	QLD	7622386	712083

CAUR	CRA	8755	168569	SSS	-80#	191736	AMG2	AUS	QLD	7621660	711486
CAUR	CRA	8755	168570	SSS	-80#	191737	AMG2	AUS	QLD	7621257	710320
CAUR	CRA	8755	168571	SSS	-80#	191738	AMG2	AUS	QLD	7621358	710359
CAUR	CRA	8755	168585	SSS	-80#	191742	AMG2	AUS	QLD	7622555	707800
CAUR	CRA	8755	168610	SSS	-80#	191743	AMG2	AUS	QLD	7631716	713890
CAUR	CRA	8755	168611	SSS	-80#	191744	AMG2	AUS	QLD	7631538	713813
CAUR	CRA	8755	168612	SSS	-80#	191745	AMG2	AUS	QLD	7631849	712347
CAUR	CRA	8755	168613	SSS	-80#	191746	AMG2	AUS	QLD	7632044	711916
CAUR	CRA	8755	168614	SSS	-80#	191747	AMG2	AUS	QLD	7631513	711492
MIMC	MIM	8754	685753	SSS	-80#	816026	AMG2	Murray Creek	AUS	QLD	7584606 722082 RL
MIMC	MIM	8754	685755	SSS	-80#	816028	AMG2	Murray Creek	AUS	QLD	7586794 720690 RL
MIMC	MIM	8754	685756	SSS	-80#	816029	AMG2	Murray Creek	AUS	QLD	7587830 719661 RL
MIMC	MIM	8754	685757	SSS	-80#	816030	AMG2	Murray Creek	AUS	QLD	7588106 719776 RL
MIMC	MIM	8754	685758	SSS	-80#	816031	AMG2	Murray Creek	AUS	QLD	7589309 720562 RL
MIMC	MIM	8754	685759	SSS	-80#	816032	AMG2	Murray Creek	AUS	QLD	7590507 720379 RL
MIMC	MIM	8754	685760	SSS	-80#	816033	AMG2	Murray Creek	AUS	QLD	7591645 719313 RL
MIMC	MIM	8754	685761	SSS	-80#	816034	AMG2	Murray Creek	AUS	QLD	7591335 719187 RL
MIMC	MIM	8754	685762	SSS	-80#	816035	AMG2	Murray Creek	AUS	QLD	7589805 719273 RL
MIMC	MIM	8754	685765	SSS	-80#	816038	AMG2	Murray Creek	AUS	QLD	7591061 719766 RL
PZBH	PENZ	8754	A3801	SSS	N/A	549249	AMG2	AUS	QLD	7590110	719473
PZBH	PENZ	8754	A3802	SSS	N/A	549250	AMG2	AUS	QLD	7590314	719373
PZBH	PENZ	8754	A3803	SSS	N/A	549251	AMG2	AUS	QLD	7590878	719659
PZBH	PENZ	8754	A3804	SSS	N/A	549252	AMG2	AUS	QLD	7590891	719793
PZBH	PENZ	8754	A3805	SSS	N/A	549253	AMG2	AUS	QLD	7590687	720206
PZBH	PENZ	8754	A3806	SSS	N/A	549254	AMG2	AUS	QLD	7590541	720454
PZBH	PENZ	8754	A3807	SSS	N/A	549255	AMG2	AUS	QLD	7590019	720607
PZBH	PENZ	8754	A3808	SSS	N/A	549256	AMG2	AUS	QLD	7589231	720441
PZBH	PENZ	8754	A3809	SSS	N/A	549257	AMG2	AUS	QLD	7588277	720708
PZBH	PENZ	8754	A3811	SSS	N/A	549258	AMG2	AUS	QLD	7586573	721489
PZBH	PENZ	8754	A3812	SSS	N/A	549259	AMG2	AUS	QLD	7585232	721705
PZBH	PENZ	8754	A663	SSS	N/A	549315	AMG2	AUS	QLD	7589771	719044
PZBH	PENZ	8754	A664	SSS	N/A	549316	AMG2	AUS	QLD	7589403	720022
PZBH	PENZ	8754	A665	SSS	N/A	549317	AMG2	AUS	QLD	7588902	719590

PZBH	PENZ	8754 A670	SSS	N/A	549318 AMG2	AUS	QLD	7587819	719642
PZBH	PENZ	8754 A671	SSS	N/A	549319 AMG2	AUS	QLD	7587817	719159
PZBH	PENZ	8754 A685	SSS	N/A	549330 AMG2	AUS	QLD	7588977	719742
PZBH	PENZ	8754 A689	SSS	N/A	549333 AMG2	AUS	QLD	7586936	720123
PZBH	PENZ	8754 A692	SSS	N/A	549334 AMG2	AUS	QLD	7586637	719535
PZBH	PENZ	8754 A694	SSS	N/A	549335 AMG2	AUS	QLD	7586090	720466
PZBH	PENZ	8754 A695	SSS	N/A	549336 AMG2	AUS	QLD	7585785	720516
PZBH	PENZ	8754 R38	SSS	N/A	549571 AMG2	AUS	QLD	7585855	720313
PZBH	PENZ	8754 R39	SSS	N/A	549572 AMG2	AUS	QLD	7586892	719926
PZBH	PENZ	8754 R40	SSS	N/A	549573 AMG2	AUS	QLD	7587796	719524
PZBH	PENZ	8754 R41	SSS	N/A	549574 AMG2	AUS	QLD	7588125	719837
PZBH	PENZ	8754 S18	SSS	N/A	549611 AMG2	AUS	QLD	7589047	719824
PZBH	PENZ	8754 S19	SSS	N/A	549612 AMG2	AUS	QLD	7585613	721101
PZBH	PENZ	8754 S24	SSS	N/A	549617 AMG2	AUS	QLD	7584463	720726
RMPR	ROSS	8655 1241081	BCL	-3#	816881 AMG2	AUS	QLD	7641000	689600 BPG
RMPR	ROSS	8655 1241082	BCL	-3#	816883 AMG2	AUS	QLD	7643200	689000 BPG
RMPR	ROSS	8655 1241083	BCL	-3#	816885 AMG2	AUS	QLD	7641300	685200 BPG
RMPR	ROSS	8655 1241084	BCL	-3#	816887 AMG2	AUS	QLD	7644700	688000 BPG
RMPR	ROSS	8655 1241088	BCL	-3#	816895 AMG2	AUS	QLD	7645500	687400 BPG
RMPR	ROSS	8655 1241089	BCL	-3#	816897 AMG2	AUS	QLD	7645700	687300 BPG
RMPR	ROSS	8655 1241090	BCL	-3#	816899 AMG2	AUS	QLD	7647700	686700 BPG
RMPR	ROSS	8655 1241099	BCL	-3#	816909 AMG2	AUS	QLD	7649000	685200 BPG
RMPR	ROSS	8655 1241102	BCL	-3#	816913 AMG2	AUS	QLD	7631050	706300 BPG
RMPR	ROSS	8655 1241121	BCL	-3#	816949 AMG2	AUS	QLD	7648200	686300 BPG
RMPR	ROSS	8655 1241122	BCL	-3#	816951 AMG2	AUS	QLD	7648300	686600 BPG
RMPR	ROSS	8655 1241126	BCL	-3#	816959 AMG2	AUS	QLD	7647600	681700 BPG
RMPR	ROSS	8655 1241133	BCL	-3#	816973 AMG2	AUS	QLD	7651850	681500 BPG
RMPR	ROSS	8655 1241134	BCL	-3#	816975 AMG2	AUS	QLD	7650800	682000 BPG
RMPR	ROSS	8655 1241141	BCL	-3#	816977 AMG2	AUS	QLD	7646000	690200 BPG
RMPR	ROSS	8655 1241142	BCL	-3#	816979 AMG2	AUS	QLD	7645800	690300 BPG
RMPR	ROSS	8655 1241150	BCL	-3#	816995 AMG2	AUS	QLD	7644600	690300 BPG



						-0.1				3.4			
						-0.1				6.2			
						8.2	25	16	52	10	-5		
RHY	O	GRT	FLO	ANT	FLO		11	10	52	-1	-5	-2	11
ANT	O	ANT	FLO	GRT	FLO		21	10	79	-1	-5	-2	12
GRT	FLO	RHY	FLO				16	10	98	-1	-5	-2	10
GRT	FLO	ANT	FLO				17	10	58	-1	-5	-2	6
QFPY	FLO	ANT	FLO	GRT	FLO		32	10	62	-1	-5	-2	6
ANT	O	GRT	FLO	ANT	FLO		7	7	36	-1	-5	-2	7
DRT	O	GRT	FLO	ANT	FLO		5	7	34	-1	-5	-2	3
ANT	O	GRT	FLO	ANT	FLO		6	4	34	-1	-5	-2	5
RHY	O	TUF	FLO	AGL	FLO		5	8	34	-1	-5	-2	18
TUF	FLO	ANT	FLO	QFPY	FLO		8	4	27	-1		0	9
TUF	O	RHY	FLO	TUF	FLO		6	5	27	1		0	14
TUF	FLO	DRT	FLO	ANT	FLO		10	8	38	1		0	12
ALUV	DSD						7	7	13	-1		-2	3
GRT	FLO	QFPY	FLO				9	11	18	-1		-2	6
ANT	O	ANT	FLO	RHY	FLO	Dents Gully	8	23	25	-1		-2	11
ANT	FLO	RHY	FLO	FPY	FLO	Lower John Creek	7	12	25	-1		-2	6
APL	FLO	ANT	FLO	RHY	FLO	Turkey Creek	6	9	38	-1		-2	6
GRT	FLO	ANT	FLO	SND	FLO	Spots Creek	8	12	30	-1		-2	8
QFPY	FLO	ANT	FLO	GRT	FLO		4	10	18	-1		-2	3
QFPY	FLO	ANT	FLO	GRT	FLO		2	4	9	-1		-2	3
GRT	FLO	QFPY	FLO	ANT	FLO	Bullock Plain Creek	4	8	13	-1		-2	3
ANT	O	ANT	FLO	CNGL	FLO		11	7	28	-1		-2	3
GRT	FLO	BLT	FLO				7	7	18	-1		-2	3
GRT	FLO	DRT	FLO	GRT	FLO		12	15	35	-1		-2	8
GRT	FLO	QFPY	FLO				10	11	25	-1		-2	5
SND	DSD					Oaky Creek	3	16	20	-1		-2	3
SND	DSD	GRT	DSD				8	23	30	-1		-2	3
ANT	FLO	GRT	FLO				8	23	33	-1		-2	3
GRT	O	SND	DSD				5	9	18	-1		-2	3
GRT	DSD	SND	DSD			Tributary of Oaky Creek	7	9	23	-1		-2	5

SND	DSD					Oaky Creky	12	17	43	1	-2	10
SND	DSD						5	17	20	-1	-2	3
GRT	FLO					Stony Creek	5	7	32	-1	-2	5
APL	FLO	QFPY	FLO	APL	O		8	6	32	-0.5	-2	13
GRT	FLO	RHY	FLO	QFPY	FLO		9	9	35	-0.5	-2	11
GRT	FLO	RHY	FLO	APL	FLO		-1	21	8	0.5	-2	3
GRT	FLO	RHY	FLO	FPY	FLO		12	9	48	-0.5	0	16
GRT	O	GRT	FLO	ANT	FLO		13	25	77	1	4	3
APL	O	APL	FLO	GRD	FLO		44	59	180	0.5	4	8
GRD	O	GRT	FLO	APL	FLO	Oaky Creek	51	66	280	1	8	10
GRD	O	GRT	FLO	APL	FLO		8	26	92	-0.5	-2	1
GRT	O	GRT	FLO	APL	FLO		25	42	230	-0.5	4	3
GRT	O	RHY	FLO	GRT	FLO		5	25	77	-0.5	4	4
GRT	FLO	ANT	FLO	QFPY	FLO	Oaky Creek	18	28	104	-0.5	4	4
GRT	FLO	ANT	FLO	QFPY	FLO		24	22	89	1	4	6
TUF	O	GRT	FLO	GRT	FLO	Oaky Creek	27	45	147	0.5	4	6
CNGL	O	APL	FLO	GRT	FLO		26	39	125	1	4	8
CNGL	O	APL	FLO	ANT	FLO		21	19	100	0.5	4	4
ANT	FLO	GRT	FLO			Oaky Creek	15	28	92	0.5	4	4
ANT	FLO	GRT	FLO	FPY	FLO		7	19	66	-0.5	2	4
DRT	O	GRT	FLO	ANT	FLO	Spring Creek	11	12	50	-0.5	-2	3
RHY	O	RHY	FLO	GRT	FLO		37	7	50	0.5	-2	11
GRT	FLO	QFPY	FLO				7	16	60	-0.5	-2	3
GRT	FLO	QFPY	FLO	ANT	FLO		5	7	39	-0.5	-2	4
GRT	FLO	RHY	FLO	ANT	FLO		14	9	50	-0.5	-2	3
SED	O	ANT	FLO	GRT	FLO	Spring Creek	9	22	92	0.5	2	4
SED	O	ANT	FLO	GRT	FLO	Spring Creek	24	25	86	0.5	4	4
GRT	O	GRT	FLO			Spring Creek	1	12	83	-0.5	-2	3
GRT	FLO	GRD	FLO	ANT	FLO	Spring Creek	3	15	75	-0.5	-2	4
TUF	FLO	DRT	FLO	MQZ	FLO		17	15	87	0.5	-2	10
ANT	FLO	TUF	FLO	BLT	FLO		13	39	80	0.5	-2	18
ANT	FLO	GRT	FLO	RHY	FLO		8	42	138	0.5	-2	8
GRD	FLO	GRT	FLO	RHY	FLO		4	120	133	0.5	-2	6



ANT	FLO	GRT	FLO	MQZ	FLO		2	120	185	0.5		-2		2
GRT	FLO	ANT	FLO				1	120	150	0.5		-2		1
							3	18	53	0.5		-2		4
							6	7	72	0.5		2		4
GRT	FLO	QFPY	FLO				3	12	84	0.5		-2		3
							7	19	87	0.5		-2		3
GRT	FLO	ANT	FLO				7	7	21	0.5		10		6
RHY	FLO	ANT	FLO	QFPY	FLO		8	10	42	-1		-2		4
ANT	FLO	AGL	FLO				10	5	35	-1		-2		2
SND	DSD						30	12	20	1		-2		7
ANT	FLO	DRT	FLO				12	7	26	1		-2		2
GRT	O	GRT	FLO	ANT	FLO		11	7	29	-1		-2		2
GRT	O	APL	O	GRT	FLO		9	7	35	-1		-2		1
GRT	FLO	RHY	FLO	ANT	FLO		2	7	19	-1	5	-2		3
CNGL	O	RHY	FLO	TUF	FLO		2	4	14	-1	5	-2		3
TUF	O	ANT	FLO	RHY	FLO		2	4	18	-1	-5	-2		1
GRT	FLO	RHY	FLO			Prospect Creek	2	4	16	-1	-5	4		1
SND	DSD					Capsize creek	4	7	39	-1	-5	-2		5
SND	DSD						5	4	21	-1	-5	-2		2
SND	DSD						5	2	22	-1	-5	-2		3
RHY	FLO	GRT	FLO				4	7	18	-1	-5	-2		2
							3	2	24	-1	-5	-2		1
							1	2	12	-1	-5	-2		-1
RHY	O						7	4	26	-1	-5	-2		10
GRT	FLO	GRD	FLO	RHY	FLO		10	10	36	-1	-5	-2		8
GRT	O	GRT	FLO	DRT	FLO		11	20	44	-1	-5	-2		15
ANT	FLO	GRT	FLO	DRT	FLO		31	20	75	-1	15	-2		5
GRT	FLO	ANT	FLO				45	14	78	-1	10	-2		5
ANT	FLO	CNGL	FLO	BLT	FLO		16	25	51	-1	10	-2		10
ANT	O	GRT	FLO	ANT	FLO		40	12	44	-1	10	-2		9
GRT	O	ANT	FLO	GRD	FLO		19	22	50	-1	10	-2		7
GRT	FLO	ANT	FLO	BLT	FLO	Plantation Creek	16	17	48	-1	10	-2		5
GRD	O	GRT	FLO	ANT	FLO	Marion Creek	23	20	54	-1	5	-2		7

FPY	FLO	MQZ	FLO				20	24	66	1	-5	-2	5
METS	O	RHY	FLO	TUF	FLO	Palmer Creek	6	16	33	1	-5	-2	2
GRT	O	QFPY	FLO				8	18	36	-1	-5	-2	7
GRT	O	QFPY	FLO	ANT	FLO	Boomerang Creek	3	16	34	-1	-5	-2	6
GRT	O	QFPY	FLO	ANT	FLO		2	11	17	-1	-5	-2	1
GRT	O	MQZ	FLO	ANT	FLO		3	20	21	-1	-5	-2	5
GRT	O	MQZ	FLO	ANT	FLO		1	4	10	-1	-5	-2	2
GRT	O	APL	FLO	GRT	FLO	Boomerang Creek	3	15	34	-1	-5	-2	2
GRT	O	RHY	FLO	GRT	FLO		5	22	47	-1	-5	-2	4
ANT	O	ANT	FLO	GRT	FLO		2	9	25	-1	-5	-2	4
APL	FLO	ANT	FLO	QFPY	FLO		8	13	40	-1	-5	-2	5
ANT	O	TUF	FLO	GRT	FLO	Middle Creek	5	11	17	-1	10	-2	2
ANT	O	RHY	FLO	ANT	FLO		10	18	49	1	5	-2	5
DRT	O	GRT	FLO	ANT	FLO		18	11	52	1	15	-2	10
DRT	O	ANT	FLO	BLT	FLO	Middle Creek	5	11	32	-1	-5	-2	2
ANT	O	QFPY	FLO	TUF	FLO		16	18	57	1	5	-2	10
GRT	FLO	BLT	FLO	ANT	FLO		16	15	58	1	10	-2	6
GRT	O	GRT	FLO	ANT	FLO		5	11	24	-1	-5	-2	2
TUF	O	RHY	FLO	ANT	FLO		1	15	36	-1	-5	-2	5
GRT	O	ANT	FLO	GRT	FLO		31	30	59	-1	5	-2	6
XTUF	O	XTUF	FLO				33	21	49	-1	5	-2	7
XTUF	O	XTUF	FLO	GRT	FLO	Palmer Creek	20	16	34	1	5	-2	10
GRT	O	GRT	FLO				18	16	28	1	5	-2	15
TUF	O	QFPY	FLO	ANT	FLO		10	16	32	1	5	-2	2
GRT	O	XTUF	FLO	GRD	FLO	Palmer Creek	17	19	34	1	-5	-2	8
TUF	O	TUF	FLO	ANT	FLO	Cattle Creek	1	9	30	1	-5	-2	2
ANT	O	RHY	FLO	GRT	FLO	Stony Creek	20	15	94	1	-5	-2	7
RHY	O	ANT	FLO	TUF	FLO	Stony Creek	19	22	70	-1	5	-2	4
RHY	FLO	TUF	FLO			Stony Creek	3	7	20	-1	-5	-2	-1
TUF	O	RHY	FLO	AGL	FLO	Stony Creek	42	14	76	-1	-5	-2	5
TUF	O	ANT	FLO	AGL	FLO	Stony Creek	22	40	64	-1	-5	-2	2
TUF	FLO	ANT	FLO	RHY	FLO	Stony Creek	19	14	66	-1	-5	-2	5
TUF	FLO	ANT	FLO	RHY	FLO		21	14	62	-1	-5	-2	3

SOIL	DSD	GRD	O			12	25	29	-1	-5	-2	3
TUF	O	ANT	FLO	RHY	FLO	17	30	48	1	5	-2	5
AGL	O	ANT	FLO	RHY	FLO	9	17	40	1	5	-2	4
TUF	O	TUF	FLO			3	12	32	1	10	-2	2
TUF	FLO	SYN	FLO	FPY	FLO	6	1	27	1	5	-2	9
QFPY	O	ANT	FLO	TUF	FLO	6	14	25	1	5	-2	4
TUF	O	ANT	FLO	GRT	FLO	3	12	25	1	5	-2	4
TUF	O	TUF	FLO	GRT	FLO	3	14	35	1	5	-2	8
TUF	O	TUF	FLO	ANT	FLO	7	7	14	1	-5	-2	20
AGL	O	TUF	FLO	ANT	FLO	7	14	30	1	5	-2	5
GRT	O	TUF	FLO	AGL	FLO	10	17	68	1	-5	-2	5
GRT	O	GRT	FLO			5	17	57	1	5	-2	4
GRT	O	GRT	FLO	ANT	FLO	15	22	116	1	5	-2	2
GRT	FLO	RHY	FLO	TUF	FLO	4	12	32	1	5	-2	1
DRT	O	GRT	FLO	ANT	FLO	17	22	108	1	-5	-2	4
DRT	FLO	GRT	FLO	FPY	FLO	7	12	56	1	-5	-2	2
GRT	O	TUF	FLO	DRT	FLO	7	15	17	-1	-5	-2	3
GRT	O	FPY	FLO	DRT	FLO	16	16	68	-1	10	-2	12
GRT	O	ANT	FLO	TUF	FLO	19	19	35	-1	-5	-2	15
RHY	O	GRT	FLO	AGL	FLO	29	21	56	-1	10	-2	5
GRT	O	GRT	FLO	RHY	FLO	6	13	35	-1	5	-2	-1
GRT	O	GRT	FLO	TUF	FLO	9	11	39	-1	-5	-2	-1
GRT	FLO	RHY	FLO	ANT	FLO	18	10	42	-1	-5	-2	-1
TUF	FLO	RHY	FLO	ANT	FLO	10	24	50	-1	10	-2	3
TUF	O	RHY	FLO	GRT	FLO	7	11	40	-1	-5	-2	-1
GRT	FLO	RHY	FLO	TUF	FLO	13	13	24	-1	-5	-2	7
GRT	FLO	SYN	FLO	DRT	FLO	21	24	62	-1	5	-2	12
TUF	O	ANT	FLO	GRT	FLO	4	18	35	-1	-5	-2	1
TUF	O	ANT	FLO	RHY	FLO	7	14	32	-1	10	-2	5
TUF	O	ANT	FLO	TUF	FLO	4	17	54	-1	-5	-2	5
GRT	FLO	TUF	FLO	ANT	FLO	9	8	53	-1	10	-2	10
GRT	O	TUF	FLO	GRT	FLO	4	9	25	-1	-5	-2	8
ANT	O	GRT	FLO	TUF	FLO	10	36	138	-1			7

Boomerang Creek

QFPY	FLO	ANT	FLO	GRT	FLO		0	0	0	0				0
GRD	O	GRT	FLO	APL	FLO	Oaky Creek	48	62	280	-1				9
GRT	O	GRT	FLO	APL	FLO		0	2	0	0				0
GRT	FLO	GRD	FLO	ANT	FLO	Spring Creek	0	0	0	0				0
GRD	FLO	GRT	FLO	RHY	FLO		5	120	140	-1		-2		2
GRT	FLO	RHY	FLO			Prospect Creek	0	0	0	0		2		0
ANT	O	GRT	FLO	ANT	FLO		39	9	46	-1				13
GRD	O	GRT	FLO	ANT	FLO	Marion Creek	0	0	0	0				0
GRT	O	APL	FLO	GRT	FLO	Boomerang Creek	0	0	0	0				0
GRT	O	RHY	FLO	GRT	FLO		11	31	48	-1				5
TUF	FLO	SYN	FLO	FPY	FLO		5	12	27	-1				8
GRT	FLO	SYN	FLO	DRT	FLO		20	20	60	-1				12
SND	DSD						7	10	21	-1	-5	-2		7
FPY	FLO	ANT	FLO	TUF	FLO		2	13	18	-1	-5	-2		4
SND	DSD						1	6	12	-1	-5	-2		4
TUF	O						6	13	32	-1	-5	-2		10
							4	11	14	-1	-5	-2		3
							2	10	12	-1	-5	-2		1
							6	11	27	-1	-5	-2		9
GRT	FLO	ANT	FLO	FPY	FLO		5	9	29	-1	-5	-2		15
GRT	O	ANT	FLO	FPY	FLO		5	7	19	-1	-5	-2		12
GRT	O	ANT	O	GRT	FLO		7	9	38	-1	-5	-2		16
GRT	FLO	ANT	FLO	QFPY	FLO		5	9	27	-1	-5	-2		13
GRT	FLO	ANT	FLO				6	7	0	-1	-5	-2		7
GRT	O	ANT	O	DRT	O		4	11	32	-1	-5	-2		8
GRT	FLO	ANT	FLO				17	7	30	-1	-5	-2		12
GRT	O	GRT	FLO	ANT	FLO		3	7	26	-1	-5	-2		8
MQZ						Boundary Ck	3	9	23	-1	-5	-2		10
GRT	FLO	ANT	FLO				2	9	16	-1	-5	-2		4
GRT	O	ANT	O	GRT	FLO		5	8	19	-1	-5	-2		11
GRT	O	FPY	O	GRT	FLO	Back Ck	-1	6	11	-1	-5	-2		8
DRT	O	ANT	O	DRT	FLO		6	6	19	-1	-5	-2		11
GRT	O	GRT	FLO	ANT	FLO		2	4	9	-1	-5	-2		4

ANT	O	GRT	FLO	ANT	FLO			4	10	27	-1	-5	-2	14
GRT	O	ANT	O	GRT	FLO			2	12	33	-1	-5	-2	12
GRT	FLO	APL	FLO					2	5	16	-1	-5	-2	8
ANT	FLO	DRT	FLO	GRD	FLO	py		4	5	27	-1	-5	-2	12
GRT	FLO	ANT	FLO	QFPY	FLO			8	5	33	-1	-5	-2	15
GRT	FLO	ANT	FLO	FPY	FLO			5	0	33	-1	-5	-2	11
GRT	FLO	ANT	FLO	DRT	FLO			6	14	24	-1	-5	-2	13
GRT	O	ANT	O	QFPY	O			4	8	10	-1	-5	-2	6
GRT	FLO	ANT	FLO	GRD	FLO		-40	8	4	17	-1	5	-2	8
GRD	O	GRD	FLO	ANT	FLO		-40	8	4	19	-1	-5	-2	6
SND							-40	7	7	24	-1	5	-2	6
SND							-40	9	3	12	-1	-5	2	5
RHY	FLO	ANT	FLO	GRT	FLO		-40	8	2	21	-1	-5	-2	7
GRT	O							5	4	22	-1	-5	-2	7
GRT	O	GRT	FLO	DRT	FLO			12	5	18	-1	-5	-2	15
GRT	O	DRT	FLO	GRT	FLO			11	6	22	1	-5	-2	19
DRT	FLO	APL	FLO	ANT	FLO			10	4	19	1	-5	-2	10
								6	2	18	-1	-5	-2	10
APL	FLO	GRT	FLO	DRT	FLO			7	2	34	-1	-5	-2	10
ANT	FLO	DRT	FLO	APL	FLO			10	3	21	-1	-5	-2	12
GAB	FLO	ANT	FLO	MZT	FLO	below Bong Bong Mine		55	62	82	1	5	-2	49
ANT	O	QZPY	O	MZT	FLO	py		17	20	52	-1	10	-2	14
SLST	O	GYWK	O	ANT	FLO			12	12	32	1	-5	-2	9
ANT	O	ANT	FLO	SHLE	FLO			29	9	25	-1	5	-2	17
								19	3	20	-1	5	-2	11
GRT	O	ANT	O	ANT	FLO			20	4	33	-1	5	-2	26
ANT	O	GRT	FLO	ANT	FLO			4	4	31	-1	-5	-2	6
DRT	O	ANT	O					5	6	25	-1	-5	-2	4
								5	14	25	-1	-5	-2	4
TUF	O	TUF	FLO	SLST	FLO		-40	3	9	8	-1	20	-2	1
TUF	O	GYWK	FLO	SHLE	FLO		-40	3	11	29	-1	25	-2	7
						Prospect Ck		1	13	21	-1	5	-2	3
								44	13	21	-1	5	-2	5

QFPY	O	QFPY	FLO	ANT	FLO		1	13	23	-1	5	-2	1
GRT	FLO						11	9	19	-1	-5	-2	11
GRT	O	ANT	O	ANT	FLO		11	9	12	-1	-5	-2	7
GRT	FLO	GRT	FLO				0	14	26	-1	-5	-2	12
GAB	FLO	ANT	FLO	GRT	FLO		9	14	19	-1	-5	-2	0
GRT	FLO	GRD	FLO	GRT	FLO		7	11	19	-1	-5	-2	9
ANT	FLO	ANT	FLO	GRT	FLO	Spring Ck	12	7	14	-1	-5	-2	9
ANT	O	ANT	FLO				6	7	12	-1	5	-2	6
							6	9	12	-1	-5	-2	6
ANT	FLO	RHY	FLO	MQZ	FLO		5	9	24	-1	-5	-2	11
TUF	FLO	ANT	FLO	TUF	FLO		21	4	10	-1	-5	-2	6
ANT	FLO	RHY	FLO	TUF	FLO		3	4	10	-1	-5	-2	6
							3	4	7	-1	-5	-2	5
TUF	FLO	ANT	FLO	RHY	FLO		3	11	27	-1	5	-2	6
TUF	O	TUF	FLO	TUF	FLO		3	9	22	-1	10	-2	4
SND	DSD						7	7	30	-1	5	-2	9
GRT	FLO	ANT	FLO	DRT	FLO		9	2	6	-1	-5	-2	5
SND	DSD						10	11	36	-1	0	-2	17
SND	DSD						9	4	30	-1	-5	-2	12
SND	DSD						9	6	15	-1	-5	-2	12
GRT	O	BLT	O	GRT	FLO		4	2	13	-1	-5	-2	6
GRT	FLO						7	4	14	-1	-5	-2	7
GRD	FLO	GRT	FLO	BLT	FLO		10	4	16	-1	-5	-2	10
GRT	O	BLT	O	GRT	FLO	Stockyard Ck	10	2	18	-1	-5	-2	11
GRT	FLO	BLT	FLO	MQZ	FLO		8	2	14	-1	-5	-2	11
GRT	FLO	MQZ	FLO				12	2	22	-1	-5	-2	9
GRT	FLO						14	2	19	-1	-5	-2	9
SND	DSD						10	2	18	-1	-5	-2	7
GRT	O	GRT	FLO	MQZ	FLO		3	4	20	-1	-5	-2	3
GRT	O	QZVN	O	GRT	FLO	epidote	4	4	20	-1	5	-2	8
GRT	O	GRT	FLO				0	6	20	-1	-5	-2	12
GRT	O	GRT	FLO	MQZ	FLO		4	4	16	-1	-5	-2	6
GRT	FLO	BLT	FLO	MQZ	FLO		1	2	13	-1	-5	-2	3

SND	DSD									-1	2	2	-1	-5	-2	2
SND	DSD									-1	4	6	-1	-5	-2	2
SND	DSD									3	2	16	-1	-5	-2	3
SND	DSD									4	4	18	-1	-5	-2	6
MQZ	FLO	GRT	FLO							1	4	14	-1	-5	-2	2
SND	DSD									12	7	26	-1	10	-2	9
SND	DSD									13	5	26	-1	5	-2	8
CNGL	O	GRT	FLO					epid in granite		5	5	12	-1	-5	-2	4
CNGL	O	GRT	FLO					epid in granite		7	5	21	-1	-5	-2	6
SND	DSD									21	7	154	-1	-5	-2	17
SND	DSD									19	9	125	-1	0	0	15
SND	DSD									22	10	57	-1	5	-2	18
SND	DSD	CLY	DSD							2	7	16	-1	5	-2	7
PHY	FLO	DRT	FLO							12	4	12	-1	-5	-2	6
GRT	O	GRD	O	GRT	FLO					2	3	7	-1	-5	-2	1
GRT	O	GRT	FLO							-1	10	12	-1	-5	-2	1
GRT	O	GRT	FLO							-1	7	7	-1	-5	-2	2
GRT	FLO	MQZ	FLO	SLST	FLO					1	4	16	-1	-5	-2	3
GRT	FLO	PHY	FLO							2	6	14	-1	-5	-2	5
SND	DSD									2	4	14	-1	-5	-2	5
GRT	O									-1	7	14	-1	-5	-2	3
GRT	FLO	ANT	FLO	PHY	FLO					16	4	27	-1	-5	-2	10
GRT	FLO	ANT	FLO	PHY	FLO					16	4	25	-1	-5	-2	13
GRT	FLO	PHY	FLO	ANT	FLO					10	4	18	-1	-5	-2	8
GRT	FLO	DRT	FLO	PHY	FLO					18	5	30	-1	-5	-2	15
GRT	O	ANT	O	GRT	FLO					12	5	15	-1	-5	-2	10
GRT	O	ANT	O	GRT	FLO					16	4	25	-1	-5	-2	12
GRT	FLO	GRD	FLO	MQZ	FLO					13	5	18	-1	10	2	11
GRT	O	GRT	FLO	DRT	FLO					2	4	14	-1	-5	2	3
GRT	O	ANT	O	GRT	FLO					16	5	20	-1	5	2	13
SND	DSD									6	9	32	-1	-5	-2	11
GRT	O	ANT	O	GRT	FLO					4	7	34	-1	-5	-2	5
GRT	FLO	ANT	FLO	SLST	FLO					4	3	16	-1	-5	-2	1

SND	DSD						9	7	14	-1	-5	-2	10
GRT	FLO	ANT	FLO	QZPY	FLO	Alligator Ck	4	3	17	-1	-5	-2	4
ANT	O	FPY	O	GRT	FLO		6	7	29	-1	-5	-2	4
SND	DSD						7	10	27	1	-5	-2	12
SND	DSD						4	5	17	1	-5	-2	7
SND	DSD						4	-1	11	-1	2	-2	1
SND	DSD						4	3	16	-1	2	-2	2
GRT	FLO	MQZ	FLO				7	4	27	-1	4	-2	5
GRT	FLO	ANT	FLO				4	4	17	-1	-5	2	4
GRT	FLO	ANT	FLO				9	9	34	-1	-5	-2	10
GRT	FLO	ANT	FLO				6	5	27	-1	-5	-2	6
SND	DSD						4	3	21	-1	-5	-2	4
SLST	O						6	4	20	-1	10	2	4
GYWK	O	SLST	O	FIRK	FLO		6	4	32	-1	10	-2	1
SND	DSD						1	3	10	-1	-5	-2	-1
GRT	O	GRD	O	ANT	O		5	-1	14	-1	-5	2	5
							6	-1	14	-1	-5	2	4
GRT	O	GRT	FLO	ANT	FLO	Blacks Ck	6	5	29	-1	-5	2	10
GRT	O	ANT	O	GRT	FLO	Howling Ck	16	10	40	-1	-5	2	14
GRT	O	ANT	O	GRT	FLO		11	6	40	-1	-5	2	14
GRT	O	ANT	O	GRT	FLO	py	15	5	37	-1	-5	-2	10
GRT	O	ANT	O	GRT	FLO		11	10	24	-1	-5	18	12
GRT	O	ANT	O	GRT	FLO		11	6	29	-1	-5	-2	27
GRT	O	ANT	O	DRT	O	py	15	7	26	-1	-5	-2	12
GRT	O	GRT	FLO	APL	FLO	Blacks Ck, galena	7	6	26	-1	-5	-2	9
GRT	O	ANT	O	GRT	FLO		15	10	22	-1	-5	-2	14
GRT	FLO					iron oxide	16	7	34	-1	-5	-2	12
GRT	O	ANT	O	GRT	FLO	Cleanskin Ck	8	10	26	-1	-5	-2	9
GRT	O	GRT	FLO	ANT	FLO		13	14	40	-1	-5	-2	12
GRT	O	ANT	O	GRT	FLO		18	-1	21	-1	-5	-2	11
GRD	O	GRT	FLO	GRD	FLO		12	-1	19	-1	-5	-2	10
GRT	FLO	ANT	FLO				21	24	35	3	-5	-2	16
ANT	FLO						10	27	35	0	-5	-2	0



GRT	O	ANT	O	GRT	FLO		9	-1	14	1	-5	-2	6
GRT	O	ANT	O	GRT	FLO	Cattele Ck	8	10	19	1	-5	-2	8
ANT	FLO	GRT	FLO	ANT	FLO		5	-1	17	-1	-5	-2	2
GRT	O	TUF	O	ANT	FLO	Grass Tree Ck, py	4	-1	14	-1	-5	-2	5
GRT	O	GRT	FLO	ANT	FLO	Cattele Ck	9	15	21	1	-5	-2	8
GRT	FLO	ANT	FLO	BLT	FLO	py	4	6	27	1	-5	-2	10
GRT	O	ANT	O	GRT	FLO		3	-1	9	-1	-5	-2	2
GRT	O	GRT	FLO	ANT	FLO		5	22	24	1	-5	-2	11
GRT	FLO	ANT	FLO	ANT	FLO		19	20	21	1	-5	-2	10
GRT	O	GRT	FLO	ANT	FLO		20	15	51	-1	-5	-2	19
GRT	O	ANT	O	GRT	FLO		4	-1	27	1	-5	-2	4
DRT	O						11	10	21	-1	-5	-2	8
ANT	FLO	DRT	FLO	ANT	FLO		6	-1	12	-1	-5	-2	8
DRT	FLO	GRD	FLO	GRT	FLO		15	10	35	-1	-5	-2	14
SND	DSD						12	10	33	-1	-5	-2	14
							12	8	45	-1	-5	-2	15
GRT	FLO	ANT	FLO	ANT	FLO	Crescent Ck	7	12	26	-1	5	-2	8
GRT	FLO	ANT	FLO			West Funnel Ck	7	10	26	-1	-5	-2	17
ANT	O	APL	FLO	GRT	FLO		8	13	33	-1	5	-2	11
FPY	FLO	TUF	FLO				4	13	26	-1	10	-2	8
TSDS	O	GRT	FLO	ANT	FLO		8	12	31	-1	-5	-2	9
ANT	FLO	LITF	FLO	TUF	FLO	Crescent Ck	7	15	35	-1	15	-2	13
GRT	FLO	DRT	FLO	ANT	FLO	Dingo Ck	9	13	26	-1	-5	-2	13
						West Funnel Ck	6	10	23	-1	-5	-2	8
ANT	FLO	ANT	FLO	TUF	FLO		7	10	14	-1	-5	-2	4
FPY	FLO	TUF	FLO	ANT	FLO		6	13	21	-1	-5	-2	4
TUF	FLO	ANT	FLO	GRT	FLO		3	13	14	-1	5	-2	3
FPY	FLO	ANT	FLO	GRT	FLO	Oaky Ck	3	13	26	-1	5	-2	4
						Funnel Ck	3	10	18	-1	-5	-2	4
ANT	O	FPY	FLO	GRT	FLO	Spot Ck	3	13	21	-1	5	-2	5
FPY	FLO	TUF	FLO	GRT	FLO		3	13	26	-1	5	-2	3
QFPY	FLO						2	7	16	-1	-5	-2	1
GRT	FLO	FPY	FLO	ANT	FLO	Hut Ck	3	13	26	-1	15	-2	4

TUF	FLO	GRT	FLO	RHY	FLO		2	13	26	-1	10	-2	4	
TUF	O	TUF	FLO	FPY	FLO		4	15	33	-1	10	-2	6	
TUF	O	TUF	FLO				2	10	12	-1	-5	-2	2	
							4	10	21	-1	10	-2	2	
							2	13	45	-1	5	-2	4	
GYWK	O	SHLE	O	GYWK	FLO	-40	3	9	31	-1	20	-2	20	
SLST	FLO	GYWK	FLO	TUF	FLO	-40	2	5	18	-1	10	-2	4	
TUF	O	SHLE	FLO	SLST	FLO	-40	3	13	31	-1	15	-2	6	
TUF	O	SHLE	FLO	TUF	FLO	-40	2	7	21	-1	5	-2	3	
SHLE	FLO	AGL	FLO	SLST	FLO	-80	4	13	21	-1	25	-2	5	
SLST	FLO	GYWK	FLO	SHLE	FLO	-40	3	9	26	-1	10	-2	7	
GYWK	FLO	SHLE	FLO	TUF	FLO	-40	2	7	14	-1	10	-2	3	
TUF	FLO	GYWK	FLO	SHLE	FLO	-80	4	9	31	-1	10	-2	5	
TUF	FLO	TUF	FLO			-80	2	11	19	-1	10	-2	3	
FPY	O	BLSH	O	TUF	FLO	fossil plants in SSB	-80	4	11	33	-1	10	-2	4
SLST	FLO	TUF	FLO	TUF	FLO	Raspberry Ck		7	15	38	-1	10	-2	8
ANT	FLO	ANT	FLO			Running Ck		4	13	28	-1	10	-2	8
TUF	O	AGL	FLO	TUF	FLO			4	13	33	-1	5	-2	14
GYWK	FLO	AGL	FLO	TUF	FLO	Running Ck		13	15	53	-1	20	-2	26
ANT	O	TUF	FLO	GYWK	FLO			4	13	33	-1	10	-2	7
TUF	FLO	TUF	FLO					4	13	30	-1	-5	-2	4
DRT	FLO	TUF	FLO					7	15	46	-1	5	-2	14
DRT	O	DRT	FLO					7	13	28	-1	10	-2	6
BX	O	DRT	FLO					4	11	30	-1	5	-2	6
DRT	FLO					Running Ck		7	15	38	-1	10	-2	12
TUF	O	FPY	FLO					4	13	35	-1	10	-2	6
TUF	FLO	FPY	FLO					7	15	33	-1	15	-2	6
TUF	FLO	TUF	FLO	AGL	FLO	Raspberry Ck		8	15	41	-1	10	-2	12
ANT	O	TUF	FLO	AGL	FLO			44	15	41	-1	10	-2	8
TUF	O	TUF	FLO	ANT	FLO			13	15	46	-1	10	-2	18
TUF	FLO	TUF	FLO	FPY	FLO			6	15	41	-1	10	-2	12
TUF	FLO	ANT	FLO	BLT	FLO			6	15	41	-1	5	-2	9
TUF	O	TUF	FLO	ANT	FLO	Raspberry Ck		6	13	31	-1	10	-2	7



40	15	60	2
35	20	55	2
5	15	20	-2
20	25	45	
50	35	70	
25	25	45	
20	20	40	
10	15	45	-2
10	15	30	-2
30	30	0	2
10	15	35	2
40	40	55	-2
10	15	35	-2
2	10	240	-2

Active sediments	0.05
Active sediments	0.1
Active sediments	-0.05
Active sediments	0.2
Active sediments	-0.05
Active sediments	0.15
Active sediments	-0.05
Active sediments	-0.05
Active sediments	0.05
Active sediments	-0.05
Active sediments	-0.05
Active sediments	0.05
Active sediments	0.2
Active sediments	-0.05
Active sediments	0.3
Active sediments	0.25
Active sediments	0.25



	AAL90011	EPM	6020 CR	22164 Y
	AAL90011	EPM	6020 CR	22164 Y
	AM16649-0	EPM	10178 CR	31176 Y
1	ZCL69023	EPM	579 CR	3430 Y
-1	ZCL69023	EPM	579 CR	3430 Y
-1	ZCL69023	EPM	579 CR	3430 Y
1	ZCL69023	EPM	579 CR	3430 Y
-1	ZCL69023	EPM	579 CR	3430 Y
-1	ZCL69023	EPM	579 CR	3430 Y
1	ZCL69023	EPM	579 CR	3430 Y
-1	ZCL69023	EPM	579 CR	3430 Y
2	ZCL69023	EPM	579 CR	3430 Y
-1	ZCL69024	EPM	579 CR	3430 Y
2	ZCL69024	EPM	579 CR	3430 Y
2	ZCL69024	EPM	579 CR	3430 Y
1	ZCL69024	EPM	579 CR	3430 Y
1	ZCL69024	EPM	579 CR	3430 Y
1	ZCL69024	EPM	579 CR	3430 Y
1	ZCL69024	EPM	579 CR	3430 Y
1	ZCL69024	EPM	579 CR	3430 Y
1	ZCL69024	EPM	579 CR	3430 Y
1	ZCL69024	EPM	579 CR	3430 Y
2	ZCL69024	EPM	579 CR	3430 Y
3	ZCL69024	EPM	579 CR	3430 Y
1	ZCL69024	EPM	579 CR	3430 Y
1	ZCL69024	EPM	579 CR	3430 Y
1	ZCL69024	EPM	579 CR	3430 Y
2	ZCL69024	EPM	579 CR	3430 Y
2	ZCL69024	EPM	579 CR	3430 Y
2	ZCL69024	EPM	579 CR	3430 Y
3	ZCL69024	EPM	579 CR	3430 Y
2	ZCL69024	EPM	579 CR	3430 Y
3	ZCL69024	EPM	579 CR	3430 Y
1	ZCL69024	EPM	579 CR	3430 Y



2	ZCL69025	EPM	579 CR	3430 Y
2	ZCL69025	EPM	579 CR	3430 Y
2	ZCL69025	EPM	579 CR	3430 Y
2	ZCL69025	EPM	579 CR	3430 Y
2	ZCL69025	EPM	579 CR	3430 Y
2	ZCL69025	EPM	579 CR	3430 Y
5	ZCL69025	EPM	579 CR	3430 Y
-1	ZCL69024	EPM	579 CR	3430 Y
-1	ZCL69024	EPM	579 CR	3430 Y
-1	ZCL69024	EPM	579 CR	3430 Y
1	ZCL69024	EPM	579 CR	3430 Y
-1	ZCL69024	EPM	579 CR	3430 Y
1	ZCL69024	EPM	579 CR	3430 Y
1	ZCL69023	EPM	579 CR	3430 Y
1	ZCL69023	EPM	579 CR	3430 Y
1	ZCL69023	EPM	579 CR	3430 Y
1	ZCL69023	EPM	579 CR	3430 Y
-1	ZCL69023	EPM	579 CR	3430 Y
-1	ZCL69023	EPM	579 CR	3430 Y
-1	ZCL69023	EPM	579 CR	3430 Y
1	ZCL69023	EPM	579 CR	3430 Y
-1	ZCL69023	EPM	579 CR	3430 Y
-1	ZCL69023	EPM	579 CR	3430 Y
-1	ZCL69023	EPM	579 CR	3430 Y
-1	ZCL69023	EPM	579 CR	3430 Y
-1	ZCL69023	EPM	579 CR	3430 Y
1	ZCL69023	EPM	579 CR	3430 Y
-1	ZCL69023	EPM	579 CR	3430 Y
-1	ZCL69023	EPM	579 CR	3430 Y
-1	ZCL69023	EPM	579 CR	3430 Y
1	ZCL69023	EPM	579 CR	3430 Y
1	ZCL69023	EPM	579 CR	3430 Y
1	ZCL69023	EPM	579 CR	3430 Y



-1	ZCL69023	EPM	579 CR	3430 Y
1	ZCL69023	EPM	579 CR	3430 Y
2	ZCL69023	EPM	579 CR	3430 Y
2	ZCL69023	EPM	579 CR	3430 Y
2	ZCL69023	EPM	579 CR	3430 Y
2	ZCL69023	EPM	579 CR	3430 Y
2	ZCL69023	EPM	579 CR	3430 Y
2	ZCL69023	EPM	579 CR	3430 Y
2	ZCL69023	EPM	579 CR	3430 Y
2	ZCL69023	EPM	579 CR	3430 Y
2	ZCL69023	EPM	579 CR	3430 Y
2	ZCL69023	EPM	579 CR	3430 Y
2	ZCL69023	EPM	579 CR	3430 Y
1	ZCL69023	EPM	579 CR	3430 Y
1	ZCL69023	EPM	579 CR	3430 Y
2	ZCL69023	EPM	579 CR	3430 Y
2	ZCL69023	EPM	579 CR	3430 Y
2	ZCL69023	EPM	579 CR	3430 Y
2	ZCL69023	EPM	579 CR	3430 Y
1	ZCL69023	EPM	579 CR	3430 Y
1	ZCL69023	EPM	579 CR	3430 Y
1	ZCL69023	EPM	579 CR	3430 Y
-1	ZCL69023	EPM	579 CR	3430 Y
1	ZCL69023	EPM	579 CR	3430 Y
1	ZCL69023	EPM	579 CR	3430 Y
1	ZCL69023	EPM	579 CR	3430 Y
2	ZCL69023	EPM	579 CR	3430 Y
1	ZCL69023	EPM	579 CR	3430 Y
2	ZCL69023	EPM	579 CR	3430 Y
1	ZCL69023	EPM	579 CR	3430 Y
3	ZCL69023	EPM	579 CR	3430 Y
2	ZCL69023	EPM	579 CR	3430 Y
2	ZCL69023	EPM	579 CR	3430 Y
2	ZCL69023	EPM	579 CR	3430 Y



3	ZCL69024	EPM	579 CR	3430 Y
0	ZCL69024	EPM	579 CR	3430 Y
8	ZCL69025	EPM	579 CR	3430 Y
5	ZCL69024	EPM	579 CR	3430 Y
0	ZCL69024	EPM	579 CR	3430 Y
1	ZCL69024	EPM	579 CR	3430 Y
0	ZCL69024	EPM	579 CR	3430 Y
2	ZCL69024	EPM	579 CR	3430 Y
1	ZCL69024	EPM	579 CR	3430 Y
0	ZCL69024	EPM	579 CR	3430 Y
2	ZCL69023	EPM	579 CR	3430 Y
0	ZCL69023	EPM	579 CR	3430 Y
1	ZCL70007	EPM	896 CR	3711 Y
4	ZCL70007	EPM	896 CR	3711 Y
1	ZCL70007	EPM	896 CR	3711 Y
1	ZCL70007	EPM	896 CR	3711 Y
1	ZCL70007	EPM	896 CR	3711 Y
1	ZCL70007	EPM	896 CR	3711 Y
1	ZCL70007	EPM	896 CR	3711 Y
3	ZCL70007	EPM	896 CR	3711 Y
3	ZCL70007	EPM	896 CR	3711 Y
3	ZCL70007	EPM	896 CR	3711 Y
5	ZCL70007	EPM	896 CR	3711 Y
5	ZCL70007	EPM	896 CR	3711 Y
5	ZCL70007	EPM	896 CR	3711 Y
4	ZCL70007	EPM	896 CR	3711 Y
2	ZCL70007	EPM	896 CR	3711 Y
4	ZCL70007	EPM	896 CR	3711 Y
2	ZCL70007	EPM	896 CR	3711 Y
3	ZCL70007	EPM	896 CR	3711 Y
3	ZCL70007	EPM	896 CR	3711 Y
1	ZCL70007	EPM	896 CR	3711 Y
1	ZCL70007	EPM	896 CR	3711 Y

4	ZCL70007	EPM	896 CR	3711 Y
5	ZCL70007	EPM	896 CR	3711 Y
4	ZCL70007	EPM	896 CR	3711 Y
2	ZCL70007	EPM	896 CR	3711 Y
1	ZCL70007	EPM	896 CR	3711 Y
1	ZCL70007	EPM	896 CR	3711 Y
3	ZCL70007	EPM	896 CR	3711 Y
1	ZCL70007	EPM	896 CR	3711 Y
1	ZCL70006	EPM	896 CR	3711 Y
1	ZCL70006	EPM	896 CR	3711 Y
1	ZCL70006	EPM	896 CR	3711 Y
1	ZCL70006	EPM	896 CR	3711 Y
1	ZCL70006	EPM	896 CR	3711 Y
1	ZCL70006	EPM	896 CR	3711 Y
1	ZCL70007	EPM	896 CR	3711 Y
1	ZCL70007	EPM	896 CR	3711 Y
1	ZCL70007	EPM	896 CR	3711 Y
1	ZCL70007	EPM	896 CR	3711 Y
1	ZCL70007	EPM	896 CR	3711 Y
1	ZCL70007	EPM	896 CR	3711 Y
1	ZCL70007	EPM	896 CR	3711 Y
1	ZCL70007	EPM	896 CR	3711 Y
1	ZCL70007	EPM	896 CR	3711 Y
1	ZCL70007	EPM	896 CR	3711 Y
2	ZCL70007	EPM	896 CR	3711 Y
2	ZCL70007	EPM	896 CR	3711 Y
1	ZCL70007	EPM	896 CR	3711 Y
1	ZCL70007	EPM	896 CR	3711 Y
2	ZCL70007	EPM	896 CR	3711 Y
1	ZCL70007	EPM	896 CR	3711 Y
1	ZCL70007	EPM	896 CR	3711 Y
1	ZCL70007	EPM	896 CR	3711 Y
1	ZCL70007	EPM	896 CR	3711 Y
1	ZCL70007	EPM	896 CR	3711 Y
2	ZCL70006	EPM	896 CR	3711 Y
2	ZCL70006	EPM	896 CR	3711 Y
1	ZCL70007	EPM	896 CR	3711 Y
1	ZCL70007	EPM	896 CR	3711 Y

1	ZCL70007	EPM	896 CR	3711 Y
1	ZCL70007	EPM	896 CR	3711 Y
1	ZCL70007	EPM	896 CR	3711 Y
1	ZCL70007	EPM	896 CR	3711 Y
1	ZCL70007	EPM	896 CR	3711 Y
2	ZCL70007	EPM	896 CR	3711 Y
-1	ZCL70007	EPM	896 CR	3711 Y
1	ZCL70007	EPM	896 CR	3711 Y
1	ZCL70007	EPM	896 CR	3711 Y
2	ZCL70007	EPM	896 CR	3711 Y
1	ZCL70007	EPM	896 CR	3711 Y
1	ZCL70007	EPM	896 CR	3711 Y
-1	ZCL70007	EPM	896 CR	3711 Y
2	ZCL70007	EPM	896 CR	3711 Y
2	ZCL70007	EPM	896 CR	3711 Y
1	ZCL70007	EPM	896 CR	3711 Y
-1	ZCL70007	EPM	896 CR	3711 Y
1	ZCL70007	EPM	896 CR	3711 Y
-1	ZCL70007	EPM	896 CR	3711 Y
1	ZCL70007	EPM	896 CR	3711 Y
-1	ZCL70007	EPM	896 CR	3711 Y
1	ZCL70007	EPM	896 CR	3711 Y
-1	ZCL70007	EPM	896 CR	3711 Y
1	ZCL70007	EPM	896 CR	3711 Y
2	ZCL70007	EPM	896 CR	3711 Y
1	ZCL70007	EPM	896 CR	3711 Y
2	ZCL70007	EPM	896 CR	3711 Y
-1	ZCL70007	EPM	896 CR	3711 Y
1	ZCL70007	EPM	896 CR	3711 Y
-1	ZCL70007	EPM	896 CR	3711 Y
-1	ZCL70007	EPM	896 CR	3711 Y
1	ZCL70007	EPM	896 CR	3711 Y
1	ZCL70007	EPM	896 CR	3711 Y
-1	ZCL70007	EPM	896 CR	3711 Y
-1	ZCL70007	EPM	896 CR	3711 Y

-1	ZCL70007	EPM	896 CR	3711 Y
-1	ZCL70007	EPM	896 CR	3711 Y
-1	ZCL70007	EPM	896 CR	3711 Y
-1	ZCL70007	EPM	896 CR	3711 Y
-1	ZCL70007	EPM	896 CR	3711 Y
1	ZCL70007	EPM	896 CR	3711 Y
1	ZCL70007	EPM	896 CR	3711 Y
1	ZCL70007	EPM	896 CR	3711 Y
1	ZCL70007	EPM	896 CR	3711 Y
1	ZCL70007	EPM	896 CR	3711 Y
0	ZCL70007	EPM	896 CR	3711 Y
1	ZCL70007	EPM	896 CR	3711 Y
1	ZCL70007	EPM	896 CR	3711 Y
-1	ZCL70007	EPM	896 CR	3711 Y
-1	ZCL70007	EPM	896 CR	3711 Y
2	ZCL70007	EPM	896 CR	3711 Y
2	ZCL70007	EPM	896 CR	3711 Y
3	ZCL70007	EPM	896 CR	3711 Y
-1	ZCL70007	EPM	896 CR	3711 Y
1	ZCL70007	EPM	896 CR	3711 Y
1	ZCL70007	EPM	896 CR	3711 Y
1	ZCL70007	EPM	896 CR	3711 Y
1	ZCL70007	EPM	896 CR	3711 Y
1	ZCL70007	EPM	896 CR	3711 Y
1	ZCL70007	EPM	896 CR	3711 Y
1	ZCL70007	EPM	896 CR	3711 Y
2	ZCL70007	EPM	896 CR	3711 Y
2	ZCL70007	EPM	896 CR	3711 Y
1	ZCL70007	EPM	896 CR	3711 Y
4	ZCL70007	EPM	896 CR	3711 Y
-1	ZCL70007	EPM	896 CR	3711 Y
3	ZCL70007	EPM	896 CR	3711 Y
2	ZCL70007	EPM	896 CR	3711 Y
1	ZCL70007	EPM	896 CR	3711 Y

2	ZCL70007	EPM	896 CR	3711 Y
1	ZCL70007	EPM	896 CR	3711 Y
1	ZCL70007	EPM	896 CR	3711 Y
10	ZCL70007	EPM	896 CR	3711 Y
4	ZCL70007	EPM	896 CR	3711 Y
-1	ZCL70007	EPM	896 CR	3711 Y
2	ZCL70007	EPM	896 CR	3711 Y
2	ZCL70007	EPM	896 CR	3711 Y
2	ZCL70007	EPM	896 CR	3711 Y
2	ZCL70007	EPM	896 CR	3711 Y
2	ZCL70007	EPM	896 CR	3711 Y
1	ZCL70007	EPM	896 CR	3711 Y
-1	ZCL70007	EPM	896 CR	3711 Y
-1	ZCL70007	EPM	896 CR	3711 Y
1	ZCL70007	EPM	896 CR	3711 Y
1	ZCL70007	EPM	896 CR	3711 Y
1	ZCL70007	EPM	896 CR	3711 Y
2	ZCL70007	EPM	896 CR	3711 Y
6	ZCL70007	EPM	896 CR	3711 Y
2	ZCL70007	EPM	896 CR	3711 Y
3	ZCL70007	EPM	896 CR	3711 Y
2	ZCL70007	EPM	896 CR	3711 Y
3	ZCL70007	EPM	896 CR	3711 Y
1	ZCL70007	EPM	896 CR	3711 Y
1	ZCL70007	EPM	896 CR	3711 Y
6	ZCL70007	EPM	896 CR	3711 Y
2	ZCL70007	EPM	896 CR	3711 Y
2	ZCL70007	EPM	896 CR	3711 Y
1	ZCL70007	EPM	896 CR	3711 Y
1	ZCL70007	EPM	896 CR	3711 Y
1	ZCL70007	EPM	896 CR	3711 Y
1	ZCL70007	EPM	896 CR	3711 Y
4	ZCL70007	EPM	896 CR	3711 Y





1	ZCL70007	EPM	896 CR	3711 Y
2	ZCL70007	EPM	896 CR	3711 Y
1	ZCL70007	EPM	896 CR	3711 Y
1	ZCL70007	EPM	896 CR	3711 Y
1	ZCL70007	EPM	896 CR	3711 Y
2	ZCL70006	EPM	896 CR	3711 Y
1	ZCL70006	EPM	896 CR	3711 Y
2	ZCL70006	EPM	896 CR	3711 Y
1	ZCL70006	EPM	896 CR	3711 Y
1	ZCL70006	EPM	896 CR	3711 Y
1	ZCL70006	EPM	896 CR	3711 Y
1	ZCL70006	EPM	896 CR	3711 Y
1	ZCL70006	EPM	896 CR	3711 Y
1	ZCL70006	EPM	896 CR	3711 Y
1	ZCL70006	EPM	896 CR	3711 Y
1	ZCL70007	EPM	896 CR	3711 Y
1	ZCL70007	EPM	896 CR	3711 Y
2	ZCL70007	EPM	896 CR	3711 Y
1	ZCL70007	EPM	896 CR	3711 Y
1	ZCL70007	EPM	896 CR	3711 Y
1	ZCL70007	EPM	896 CR	3711 Y
1	ZCL70007	EPM	896 CR	3711 Y
1	ZCL70007	EPM	896 CR	3711 Y
1	ZCL70007	EPM	896 CR	3711 Y
1	ZCL70007	EPM	896 CR	3711 Y
1	ZCL70007	EPM	896 CR	3711 Y
1	ZCL70007	EPM	896 CR	3711 Y
2	ZCL70007	EPM	896 CR	3711 Y
1	ZCL70007	EPM	896 CR	3711 Y
2	ZCL70007	EPM	896 CR	3711 Y
1	ZCL70007	EPM	896 CR	3711 Y
1	ZCL70007	EPM	896 CR	3711 Y
1	ZCL70007	EPM	896 CR	3711 Y
1	ZCL70007	EPM	896 CR	3711 Y



ALS74016	EPM	1252 CR	5112 Y
ALS74016	EPM	1252 CR	5112 Y
ALS74016	EPM	1252 CR	5112 Y
ALS74016	EPM	1252 CR	5112 Y
ALS74016	EPM	1252 CR	5112 Y
ALS74016	EPM	1252 CR	5112 Y
ALS74016	EPM	1252 CR	5112 Y
ALS74016	EPM	1252 CR	5112 Y
ALS73001	EPM	1252 CR	5112 Y
ALS73001	EPM	1252 CR	5112 Y
ALS73001	EPM	1252 CR	5112 Y
ALS73001	EPM	1252 CR	5112 Y
ALS73001	EPM	1252 CR	5112 Y
ALS73001	EPM	1252 CR	5112 Y
ALS73001	EPM	1252 CR	5112 Y
ALS73001	EPM	1252 CR	5112 Y
ALS87058	EPM	4863 CR	18320 Y
ALS87058	EPM	4863 CR	18320 Y
ALS87058	EPM	4863 CR	18320 Y
ALS87058	EPM	4863 CR	18320 Y
ALS87058	EPM	4863 CR	18320 Y
ALS87058	EPM	4863 CR	18320 Y
ALS87058	EPM	4863 CR	18320 Y
ALS87058	EPM	4863 CR	18320 Y
ALS87058	EPM	4863 CR	18320 Y
ALS87058	EPM	4863 CR	18320 Y
ALS87058	EPM	4863 CR	18320 Y
ALS87058	EPM	4863 CR	18320 Y
ALS87058	EPM	4863 CR	18320 Y
ALS87058	EPM	4863 CR	18320 Y
ALS87058	EPM	4863 CR	18320 Y
ALS87058	EPM	4863 CR	18320 Y
ALS87059	EPM	4863 CR	18320 Y
ALS87058	EPM	4863 CR	18320 Y
ALS87058	EPM	4863 CR	18320 Y
ALS87058	EPM	4863 CR	18320 Y
ALS87058	EPM	4863 CR	18320 Y
ALS87058	EPM	4863 CR	18320 Y
ALS87059	EPM	4863 CR	18320 Y
ALS87059	EPM	4863 CR	18320 Y
ALS87059	EPM	4863 CR	18320 Y