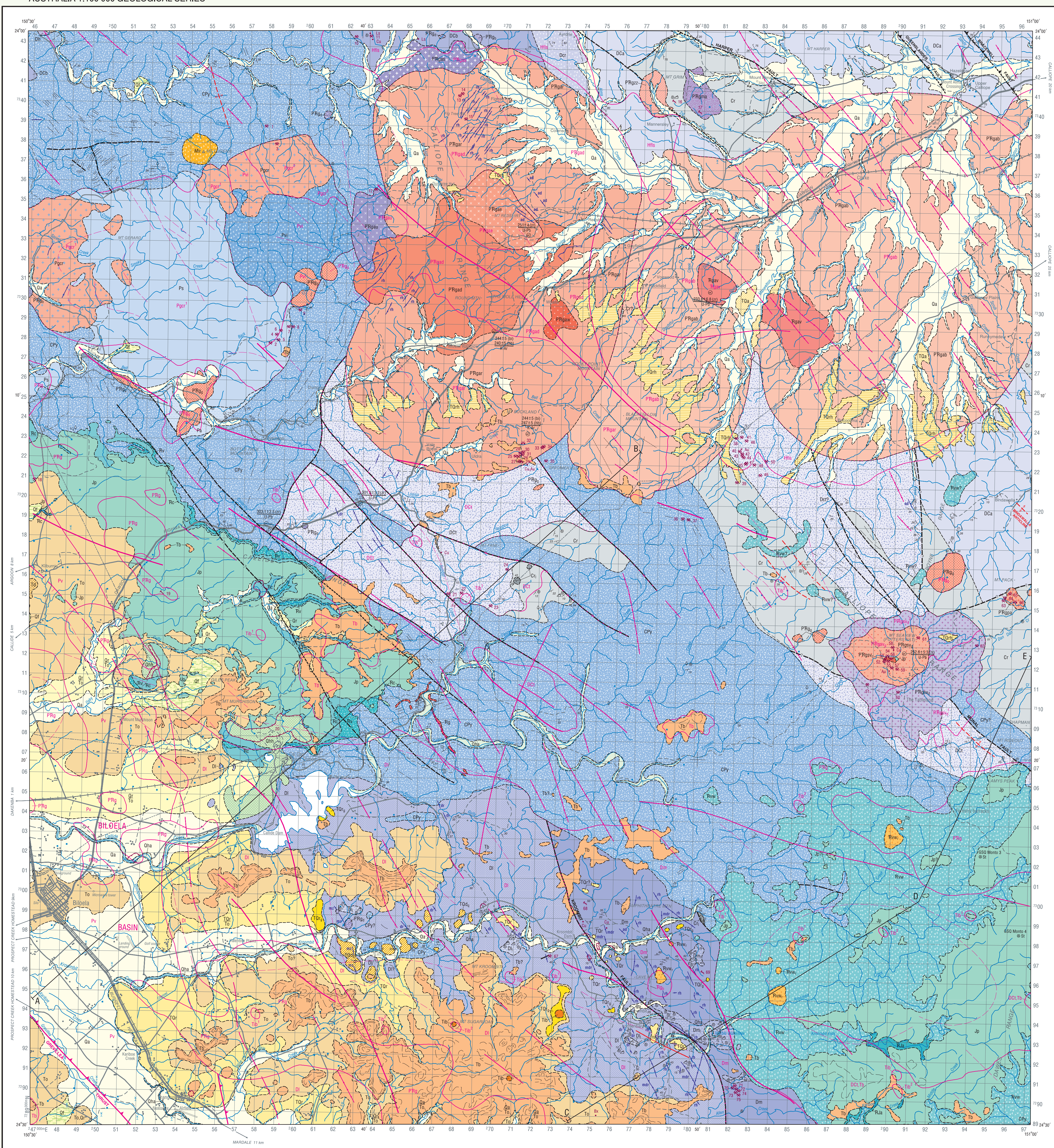


BILOELA
QUEENSLAND

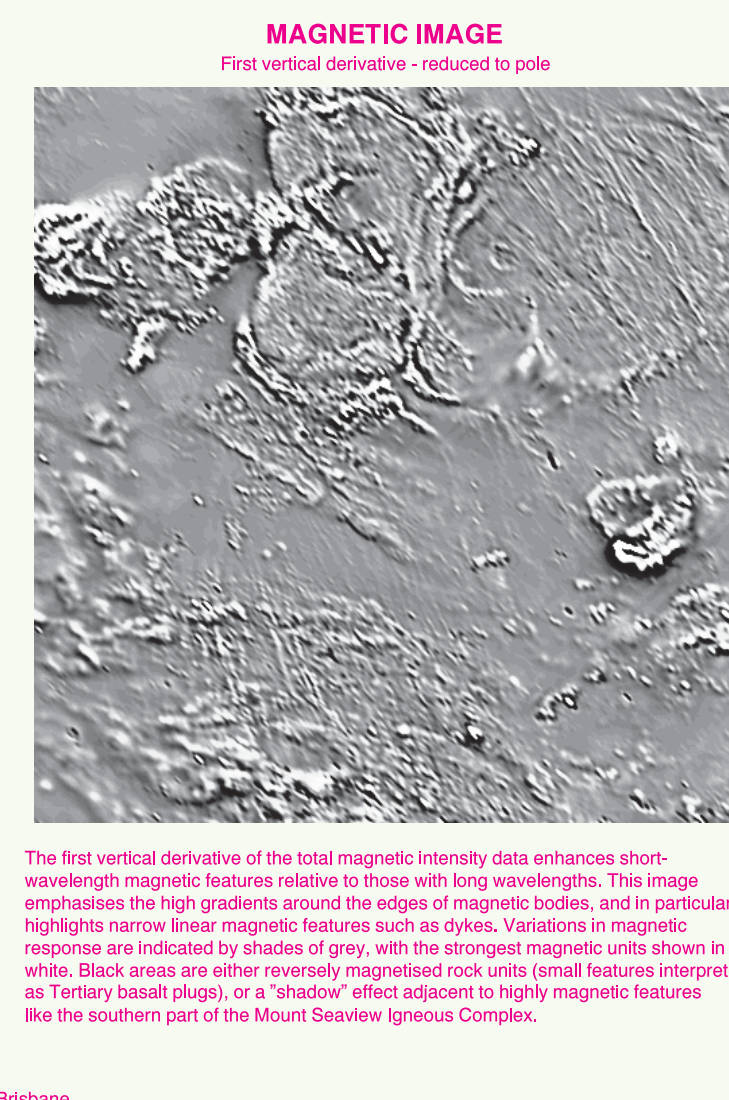
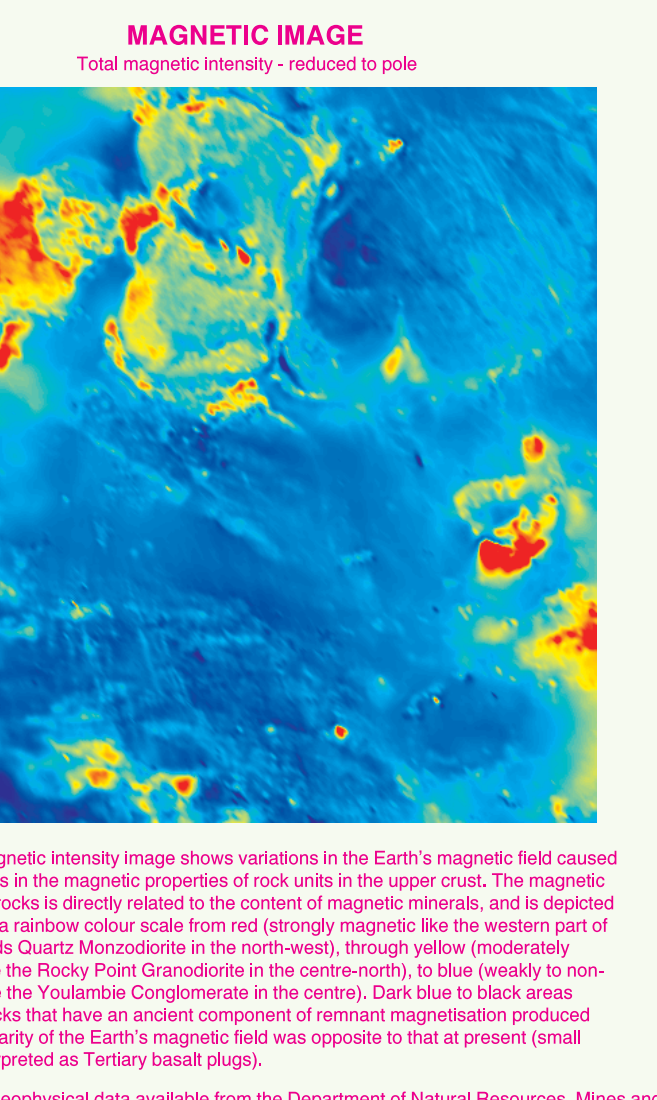
AUSTRALIA 1:100 000 GEOLOGICAL SERIES

SHEET 9049



- QUATERNARY**
- Qa Clay, silt, sand active stream channel and low terraces
 - Qm Gravel, sand and mud, man-made deposits associated with mining tailings, dumps and rehabilitated areas
 - Qs Clay, silt, sand, gravel, flood plain alluvium
 - Qf Sand, gravel, clay, floodplain sheets and small fans
 - Qr Clay, silt, sand, gravel and soil, colluvial and residual deposits
- TERTIARY - QUATERNARY**
- Ta Sand, mud and gravel, high-level alluvium and colluvium
 - Td Clay, silt, sand, gravel and soil, colluvial and residual deposits
 - Td₁ Quartz and ironstone gravel, cobbles and boulders of flow banded, aphyric and minor aphyric rhyolite, andesite, andesite to dacite, and ferruginous quartzite sandstone and pebble conglomerate, sand and silt, colluvial and residual deposits
 - Td₂ Sand, gravel, colluvial floodplain sheets
 - Ts₁ Siltstone
- TERTIARY**
- Ta₁ Indurated and ferruginous top of deep weathering profiles, locally including keritecrite
 - Tb Basalt, moderate to high magnetic domain
 - Tb₁ Basalt plug
 - Tb₂ Basalt plug, TB₁ - high magnetic domain
 - Tb₃ TB₂ - very low magnetic domain (reversely magnetized)
- MESZOIC**
- Bi Biola Formation: Mudstone, siltstone, oil shale, carbonaceous mudstone and sandstone; minor lignite, coal and limestone
 - Pr Precipice Sandstone: Intrusive rhyolite
- JURASSIC**
- Jp Thin-bedded cross-bedded, fine to coarse-grained, pebbly quartzose sandstone, and minor siltstone sandstone, siltstone and mudstone
- TRIASSIC - JURASSIC**
- Ta₁ Conglomerate, lithic sandstone, grey siltstone and carbonaceous shale
- TRIASSIC**
- Ta₂ Monoclinolite/microgranite, granodiorite, gabbro, syenite, quartz syenite, granite
 - Ta₃ Gabbro, very high magnetic domain
 - Ta₄ Poorly sorted, polymictic, pebble to boulder conglomerate, sandstone, siltstone, coal seams, felsic tuff
 - Ta₅ Polymictic, volcaniclastic, pebble to cobble conglomerate, interbedded with volcanoclastic sandstone and lithic tuff, trachyte, andesite, lithic and crystal tuff, quartzite, siltstone and siltstone; rare carbonaceous sandstone
 - Ta₆ Rhyolite, trachyte, syenite, rhyolite breccia, tuff, minor basalt
 - Ta₇ Intrusive rhyolite domes
- PERMIAN - TRIASSIC**
- Pr₁ Pale pink to grey, medium-grained hornblende-biotite granite, locally with pyrite along joint planes; low magnetic domain
 - Pr₂ Deeply weathered, grey, medium-grained biotite-hornblende granodiorite; low to moderate magnetic domain
 - Pr₃ Pink, medium to coarse-grained hornblende-biotite granite with minor tourmaline pegmatite; low magnetic domain
 - Pr₄ Pink, medium-grained biotite granite
 - Pr₅ Grey to pinkish grey, medium-grained biotite-hornblende granodiorite, locally with psalinite, K-feldspar; high magnetic domain
 - Pr₆ Pink, medium-grained biotite-hornblende quartz diorite; high magnetic domain
 - Pr₇ Pink, medium-grained biotite-hornblende quartz diorite; high magnetic domain
 - Pr₈ Grey, medium-grained hornblende gabbro; moderate to high magnetic domain
 - Pr₉ Grey to dark grey, medium-grained biotite-hornblende quartz diorite and aegirine-hypersthene hornblende quartz gabbro; very high magnetic domain
- PERMIAN**
- Pr₁₀ Grey to pink, medium-grained hornblende quartz monzonite; low magnetic domain
 - Pr₁₁ Dark grey trachyte to dacite; volcanic breccia; numerous small quartz monzonite intrusions; moderate to high magnetic domain
 - Pr₁₂ Greenish grey, andesitic sandstone and sandstone; grey mudstone, minor lignite
 - Pr₁₃ Limestone, siltstone, lithic sandstone
 - Pr₁₄ (Unidentified volcanic rocks; moderate magnetic domain)
- LATE CARBONIFEROUS - EARLY PERMIAN**
- Pr₁₅ Granite, granodiorite, diorite; moderate to high magnetic domain
 - Pr₁₆ Granite, granodiorite; high magnetic domain
 - Pr₁₇ Diorite, monzonite
 - Pr₁₈ Gabbro
- EARLY CARBONIFEROUS**
- Pr₁₉ Dark grey muscovite and siltstone; felsic volcanoclastic sandstone; oolite-bearing sandstone; oolite-bearing conglomerate with dark grey mudstone rip-up clasts; rounded polymictic conglomerates; oolitic limestone
 - Pr₂₀ Oolitic limestone, calcareous sandstone
- LATE DEVONIAN - EARLY CARBONIFEROUS**
- Pr₂₁ Aphyric volcanoclastic sandstone and conglomerate; minor lignite; grey rhyolite, siltstone and oolitic sandstone
 - Pr₂₂ Thinly interbedded, fine-grained sandstone and siltstone; thick beds of volcanoclastic (andesite to dacite) conglomerate with rip-up clasts
 - Pr₂₃ Greenish grey to purple, granite to boulder andesitic breccia/conglomerate; green-grey to purple-grey, lithic to felsic volcanic sandstone; moderately polymictic conglomerate; brown-grey to purple, lithoclastic to felsic volcanic sandstone, siltstone, mudstone; grey to purple, andesite, minor and tuff and felsic volcanic sandstone; rare basaltic pillow lava and hydrothermal; moderate magnetic domain
- DEVONIAN**
- Pr₂₄ Green-grey to purple, granite to boulder andesitic breccia/conglomerate; green-grey to purple-grey, lithic to felsic volcanic sandstone; moderately polymictic conglomerate; brown-grey to purple, lithoclastic to felsic volcanic sandstone, siltstone, mudstone; grey to purple, andesite, minor and tuff and felsic volcanic sandstone; rare basaltic pillow lava and hydrothermal; moderate magnetic domain
 - Pr₂₅ Green-grey to purple, granite to boulder andesitic breccia (and lesser conglomerate); green-grey to purple, lithic to felsic volcanic sandstone; moderately polymictic conglomerate; brown-grey to purple, lithoclastic to felsic volcanic sandstone, siltstone, mudstone; grey to purple, andesite, minor and tuff and felsic volcanic sandstone; rare basaltic pillow lava and hydrothermal; moderate magnetic domain
 - Pr₂₆ Green-grey to purple, granite to boulder andesitic breccia; green-grey, fine to medium, quartz-bearing granule to pebble polymictic conglomerate; brown-grey to purple, lithoclastic to felsic volcanic sandstone; green-grey to purple, andesite, minor and tuff and felsic volcanic sandstone; rare basaltic pillow lava and hydrothermal; moderate magnetic domain
 - Pr₂₇ Basaltic to andesitic, volcanoclastic (rarely dacitic and rhyolitic) sandstone and conglomerate; minor siltstone and fossiliferous limestone; rare andesite
- TOPOGRAPHICAL AND CULTURAL FEATURES**
- Highway
 - Secondary road
 - Minor road
 - Vehicle track
 - Railway station
 - Railway
 - Transmission line
 - Homestead
 - Building
 - Topographical station
 - Tank
 - Yard or small dam
 - Waterhole
 - Windmill
- Mining Symbols**
- Open cut or quarry (1994)
 - Active mine, abandoned
 - Prospect, abandoned
 - Actual workings, abandoned
 - Mineral occurrence
 - Mineral occurrence
 - Aj - silver, Ag - gold, Bx - barite, C - coal, Cu - copper, Fe - iron, Ls - limestone, Mn - manganese, Zn - zinc

- GEOLOGICAL SYMBOLS**
- Geological boundary
 - Face boundary - Section only
 - Fault
 - Thrust fault, triangles pointing in direction of fault dip
 - Dip-slip fault, triangles pointing in direction of fault dip
 - Strike-slip fault, triangles pointing in direction of fault dip
 - Normal fault, triangles pointing in direction of fault dip
 - Reverse fault, triangles pointing in direction of fault dip
 - Oblique-slip fault, triangles pointing in direction of fault dip
 - Unconformity
 - Discontinuity
 - Lineament
 - Joint pattern
 - Strike and dip of cleavage
 - Strike and dip of flow banding/platy flow structure
 - Macrofossil locality
 - Coal seam locality
 - Plant fossil locality
 - Trace fossil locality
 - Stratigraphic hole with reference number
 - Isotopic age in millions of years (m.y.) - uranium-lead method
 - K/Ar - potassium-argon method
 - D/He - deuterium-helium method
 - Alphaprotocapture



INDEX TO MINES AND PROSPECTS

Number	Name	Coordinates	Number	Name	Coordinates	Number	Name	Coordinates	
1	Argon	Cu	57688	27	---	70821	S3 Orient	Au	885123
2	Last Chance	Au,Cu	58172	28	---	70822	S4 Cattle Creek	Au	885123
3	E.D.	Au	58379	29	---	70823	S5 Sunrise	Au	887122
4	Doe	Au	58523	30	---	71025	S6 ---	Au	888124
5	---	Au	58526	31	---	71024	S7 Callamondin	Au,Cu	889119
6	Blue Pilgrim	Au	58725	32	Staglight Yard Hill	71030	S8 ---	Au	889119
7	Brooklyne No. 2 South	Au	59127	33	---	72028	S9 ---	Au	902118
8	---	Au	59295	34	---	72128	S10 ---	Au,Cu	902118
9	Day Dream	Au,Ag	59295	35	---	72221	S11 Mount Seaview	Au	912134
10	Miler & Dales	Au	60514	36	North Peak	72228	S12 Sun Day Creek	Cu,Ag,Au,Zn	942131
11	Gunsperder Creek	Cu,Au	60435	37	Cliff Hill	75192	S13 ---	CRD/CREEK GROUP	808663
12	---	Cu	61405	38	---	81824	S14 ---	Au	951154
13	Flumtree Hill	Au	61405	39	Golden Crown	81812	S15 The Good Hope	Au	958155
14	---	Au	61740	40	---	82027	S16 The Mine	Au	958157
15	Tip Top Hill	Au	61930	41	---	82135	S17 ---	Au	961154
16	Mount Gem	Ag,Cu,Au	78446	42	Rasmussen	82126	S18 Krommell	Cu,Au	727970
17	Mannaminy	Au	78725	43	Mount Cooker	82125	S19 ---	808663	
18	Boundary Hill	C	46308	44	Bauntons	82224	S20 Ya Tree	Cu,Zn	82396
19	Callis - Mole	C	52813	45	Mount Cooker	82221	S21 ---	CRD/CREEK GROUP	808663
20	Callis	C	56959	46	Callabon	82223	S22 ---	Cu,Zn	82396
21	---	Cu,Au	61913	47	---	82421	S23 ---	Au	82396
22	---	Cu,Zn	66153	48	Mount Alice	82721	S24 ---	Cu	82394
23	---	Cu	68547	49	Mount Alice	83115	S25 ---	Cu,Zn,Au	82404
24	Mount Fane	Cu	70186	50	Nipah Peak	83423	S26 ---	Cu	85404
25	Mount Rainbow West	Au,Cu	70222	51	Phoebe	88118	S27 ---	Au	88118
26	Mount Rainbow	Au,Cu	79823	52	Georgiana	88123	S28 ---	Cu	82396

INDEX TO 1:100 000 MAPS

Sheet	Area	Scale	Year
9048	...	1:100,000	2001
9049	...	1:100,000	2001
9050	...	1:100,000	2001

