

Published by the Department of Natural Resources, Mines and Water, Queensland
based under the authority of the Minister for Natural Resources,
Mines and Water, Queensland
© The State of Queensland (Department of Natural Resources, Mines and Water) 2006
This product incorporates topographic data which is:
© Commonwealth of Australia (Geoscience Australia) 1972
Drainage sourced from 1:100 000 Medpac. All rights reserved.
Major roads revised to 1996

While every care is taken to ensure the accuracy of this data, the Department of Natural Resources, Mines and Water makes no representations or warranties about its accuracy, reliability, completeness or suitability for any particular purpose and disclaims all responsibility and all liability (including without limitation, liability in negligence) for all expenses, losses, damages (including indirect or consequential damage) and costs which might be incurred as a result of the data being inaccurate or incomplete in any way and for any reasons.

INDEX TO 1:100 000 MAPS	
MAP NO.	NAME
8851	Marlborough
8852	Marlborough
8853	Marlborough
8854	Marlborough
8855	Marlborough
8856	Marlborough
8857	Marlborough
8858	Marlborough
8859	Marlborough
8860	Marlborough
8861	Marlborough
8862	Marlborough
8863	Marlborough
8864	Marlborough
8865	Marlborough
8866	Marlborough
8867	Marlborough
8868	Marlborough
8869	Marlborough
8870	Marlborough
8871	Marlborough
8872	Marlborough
8873	Marlborough
8874	Marlborough
8875	Marlborough
8876	Marlborough
8877	Marlborough
8878	Marlborough
8879	Marlborough
8880	Marlborough
8881	Marlborough
8882	Marlborough
8883	Marlborough
8884	Marlborough
8885	Marlborough
8886	Marlborough
8887	Marlborough
8888	Marlborough
8889	Marlborough
8890	Marlborough
8891	Marlborough
8892	Marlborough
8893	Marlborough
8894	Marlborough
8895	Marlborough
8896	Marlborough
8897	Marlborough
8898	Marlborough
8899	Marlborough
8900	Marlborough

Queensland Government
Natural Resources, Mines and Water



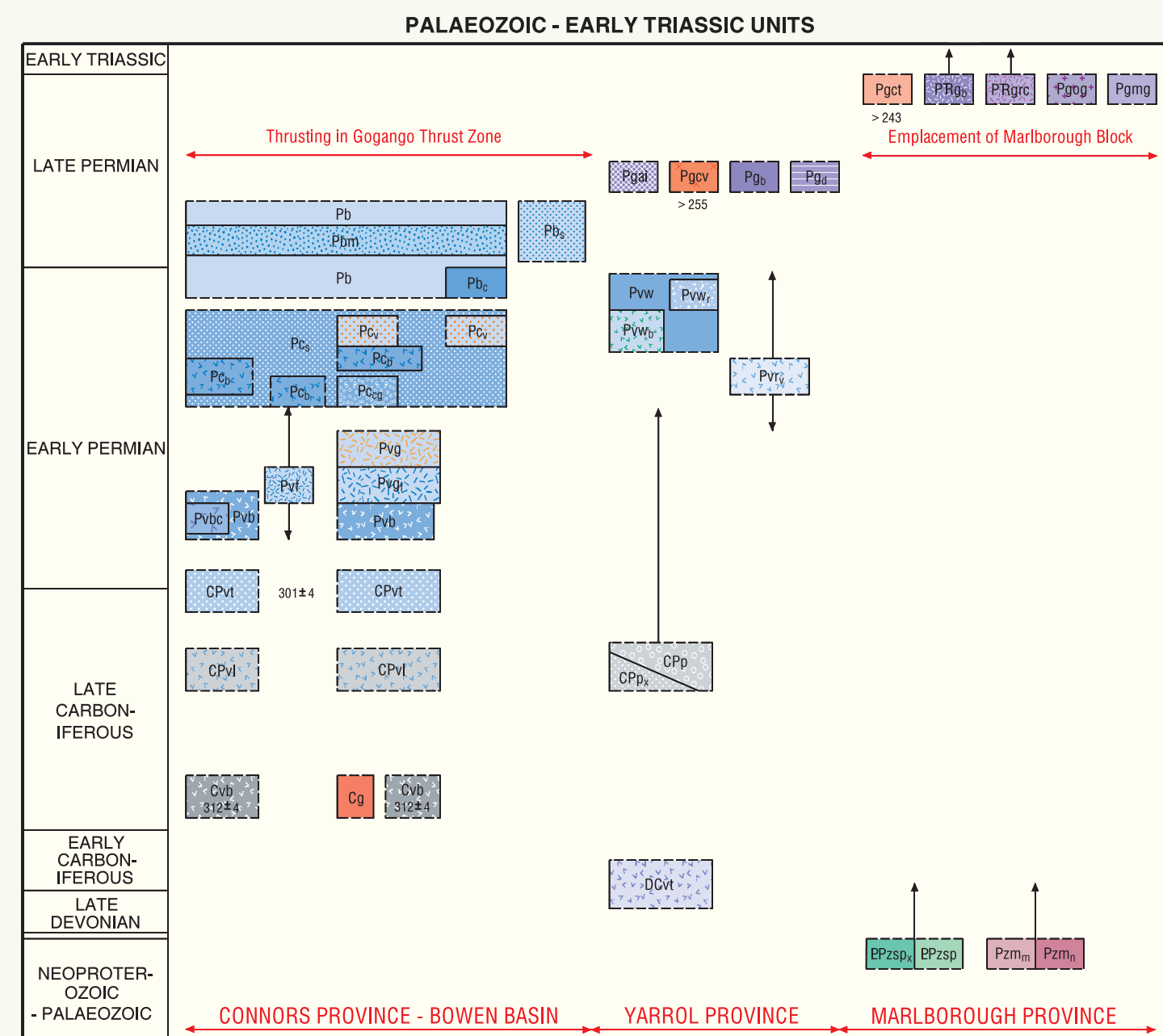
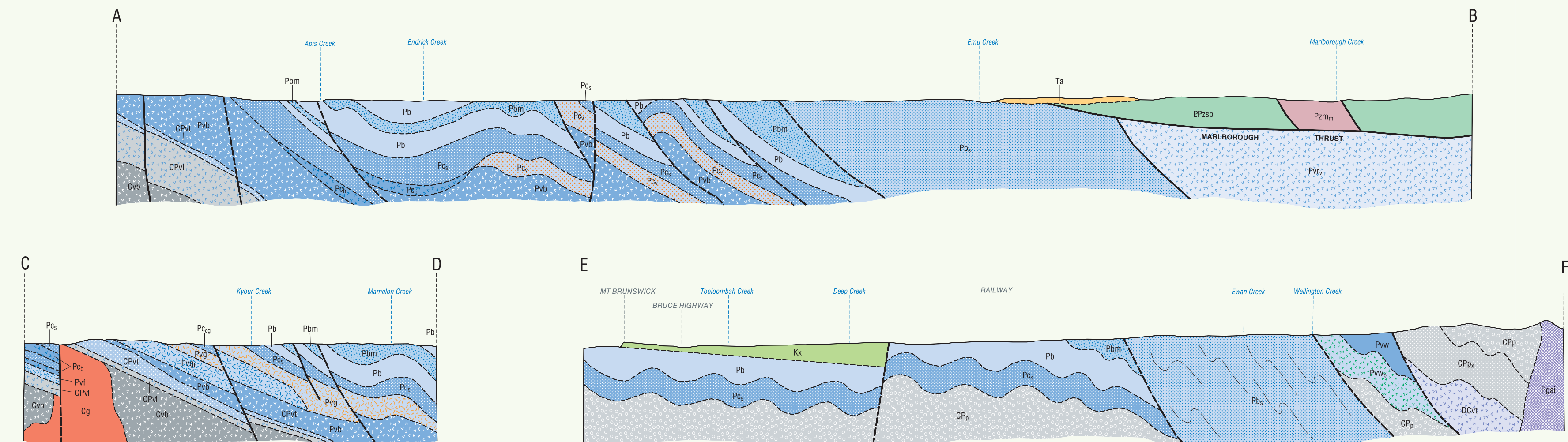
Geology: 1964 by E.J. Mahoney, F. Diggs, A.R. Jensen, R.G. Morgan and C.M. Gregory (BMR).
A.R. Jensen and F. Diggs (Geological Survey of Australia).
1987-84 by J.F. Dow (Marlborough Gold Mines NL).
1984-87 by J.F. Dow (Marlborough Gold Mines NL).
1989-86 by T.A. Horner (University of Queensland).
1989-87 by U.W. Hurrell (GSD).
Mineral occurrence mapping: 1989 by P.D. Garand.
Compiled by W. Marshall and A. Newnham.
Cartography by C.W. Roberts, Graphic Services Unit, GSD, Natural Resource Sciences, Department of Natural Resources, Mines and Water.



SCALE 1:100 000
GREY NUMBERED LINES ARE 1 000 METRE INTERVALS OF THE MAP GRID OF AUSTRALIA 1984, ZONE 55
UNIVERSAL TRANSVERSE MERCATOR PROJECTION
HORIZONTAL DATUM: GEOCENTRIC DATUM OF AUSTRALIA 1984 (GDA84)

SCHEMATIC SECTIONS

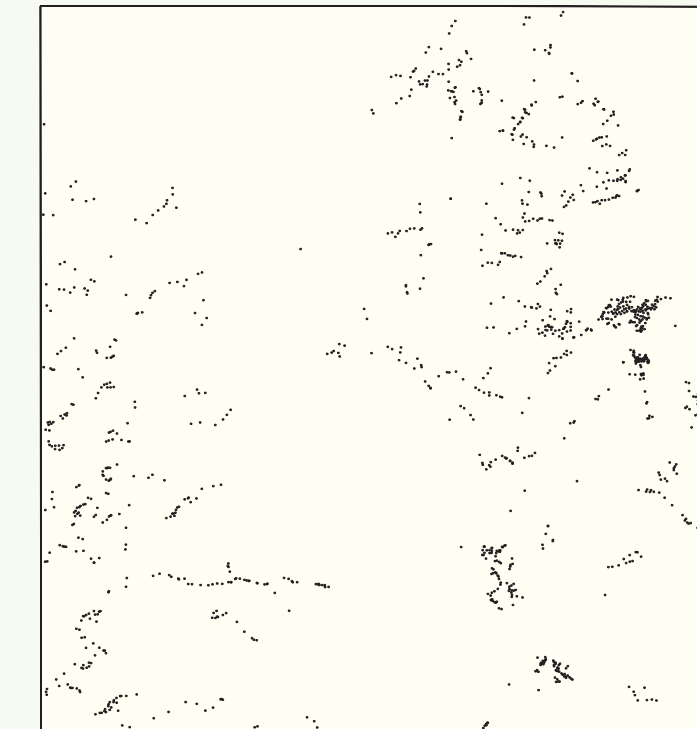
Quaternary units omitted



EXPLANATION

In the schematic references, rock units are shown in their stratigraphic and geographic relationships to one another. The width of the unit boxes and the style of their upper and lower boundaries indicate diagrammatically the geological relationships between units. The height of a box suggests its age range which is based on isotopic age in the case of some units.

FIELD OBSERVATION POINTS



MARLBOROUGH

SHEET 8852
FIRST EDITION 2004
REVISED MARCH 2006

Copies of this map may be obtained from the Department of Natural Resources, Mines and Water, Brisbane