

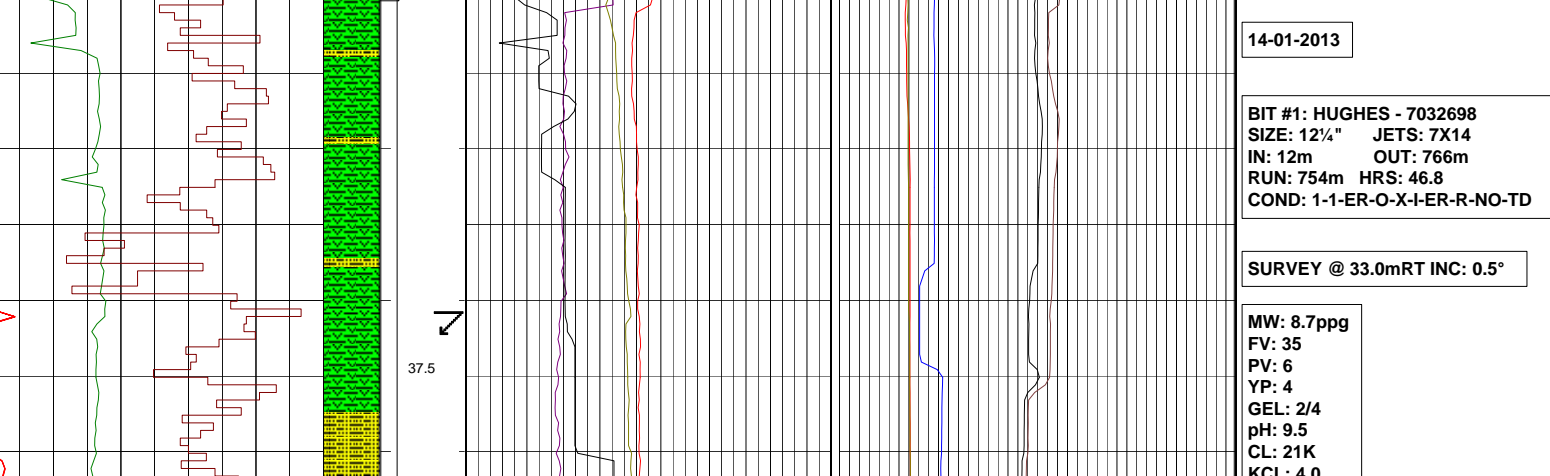
DRILLING LOG

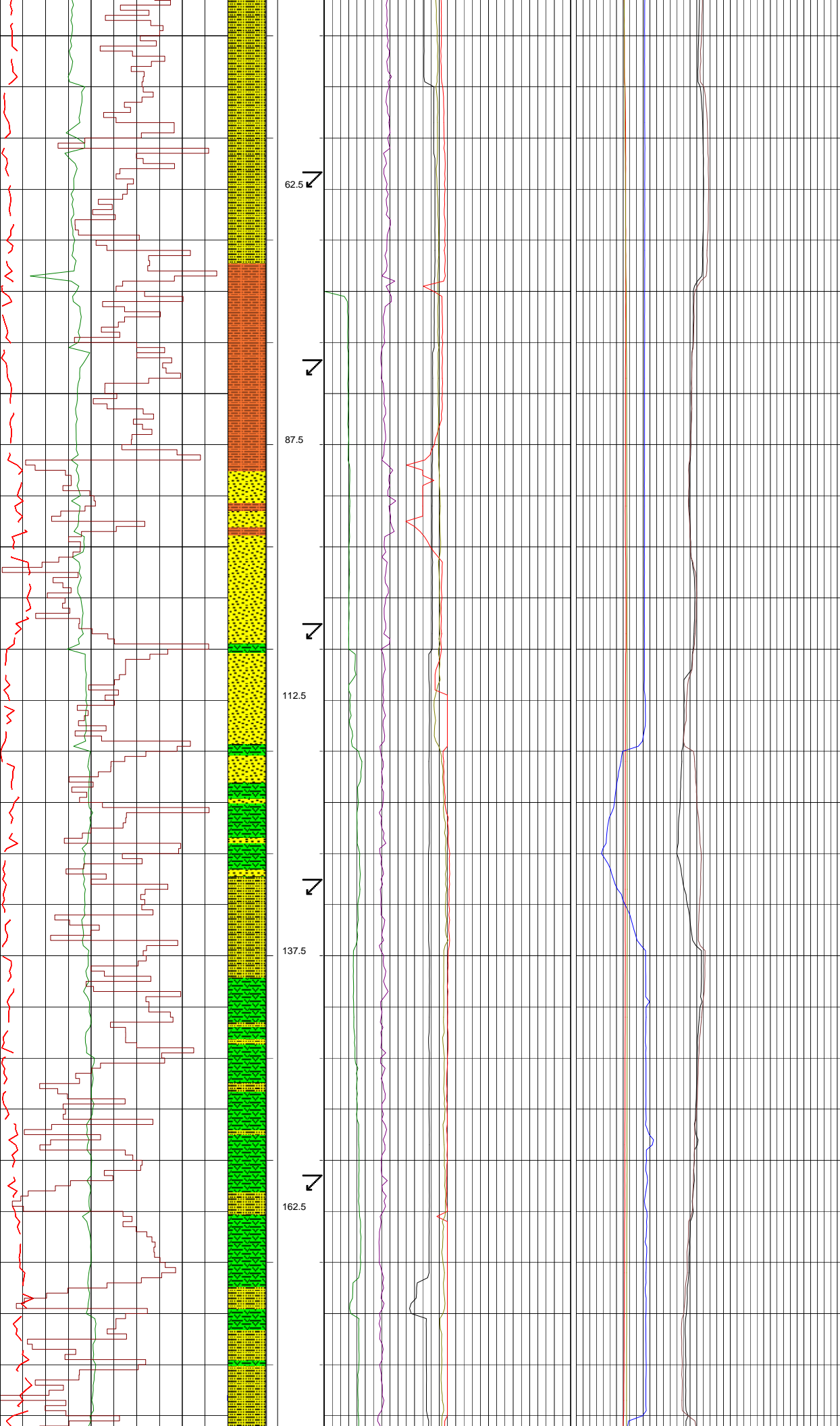
TRICLOPS-1

Field : EXPLORATION	Rotary Table: 146.86m	Rig : ENSIGN 918	Open Hole:	Cased Hole:	Loggers : DUC NGUYEN
Permit : ATP 539	Ground Level : 141.86m	Spud Date : 14-01-2013	12-1/4" : 766m	9-5/8" : 762.61m	JOSHUA MARDEN
State : QLD	Datum: GDA 94	TD Date : 28-01-2013	8-1/2" : 1926.5m	7" : m	MATHEW TOWNSEND
Country : Australia	Lat. : 25° 59' 43.4"S	Total Depth : 1926.5m			DENIS MALIZANI
Scale: 1/ 500	Long : 141° 14' 40.4"E	Final Status : PLUGGED & ABANDONED			PRAMOD GADHE

LITHOLOGY Sandstone Siltstone Claystone Shale Limestone Dolomite Coal Mudstone Evaporite Calcarenite Cement	ACCESSORIES Pyrite Glauconite Mica Chert Pyrite Fossils Iron Breccia Argillaceous Carbonaceous Foraminifera	Casing shoe Deviation survey Dst Core Wiper Trip MUD DATA MW - Mud Weight (lb/gal) FV - Funnel Viscosity (s/qt) PV - Plastic Viscosity (cps) YP - Yield Point (lb/100ftsq) Gel - Gel Strength (10sec) WL - Water Loss (cc/30min) pH - Acidity / Alkalinity Ck - Cake (32nd/inch) Sol - Solids (% vol) Cl - Chlorides (mg/l)	ABBREVIATIONS BOPD - Barrels of Oil Per Day BWPD - Barrels of Water Per Day CG - Connection Gas CO - Circulate Out COND - Condensate c/c - Crush Cut DST - Drill Stem Test FLOW - Flow Rate (gal/min) GCM - Gas Cut Mud GCW - Gas Cut Water GTS - Gas To Surface INJ - Injection of Mist (bbls/hr) LCM - Lost Circulation Material MMCFD - Million Cubic Feet / Day NGTS - No Gas To Surface NOTS - No Oil To Surface NR - No Returns OCM - Oil Cut Mud OG - Over Gauge OH - Open Hole OTS - Oil To Surface Q - Flow Rate REC - Recovery Rmf - Resistivity mud filtrate ROP - Rate Of Penetration RPM - Revolutions Per Minute RTSTM - Rate Too Small To Measure Rw - Resistivity water r/r - Ring Residue SCFM - Standard Cubic Ft/Min (air) SGCM - Slightly Gas Cut Mud SPM - Strokes Per Minute SPP - Stand Pipe Pressure SWC - Side-Wall Core TG - Trip Gas WOB - Weight On Bit
---	---	---	--

ROP (m/hr) 50 25 0 <hr/> ROP (m/hr) 100 75 50 <hr/> RPM (rpm) 0 125 250 <hr/> WOB (klbs) 0 25 50	LITHOLOGY DEPTH	FLWpmps (gpm) 0 500 1K <hr/> SPP (psi) 0 1500 3K <hr/> TORQUE (lb*ft) 0 5K 10K <hr/> MW IN (ppg) 8 9 10 <hr/> MW OUT (ppg) 8 9 10	ACTIVE (bbl) 0 250 500 <hr/> TOTAL (bbl) 0 500 1K <hr/> PREMIX (bbl) 0 250 500 <hr/> TMP IN (degC) 0 100 200 <hr/> TMP OUT (degC) 0 100 200	DRILLING COMMENTS
---	--------------------------------------	---	---	--





WOB: 0-4 klbs
 RPM: 33-89
 SPP: 0-1 psi
 FLW: 91-405 gpm
 TRQ: 2.4-4.0 klb*ft

SURVEY @ 61.0mRT INC: 0.5°

MW: 8.8ppg
 FV: 38
 PV: 8
 YP: 4
 GEL: 4/7
 pH: 9.5
 CL: 19.5K
 KCL: 4.0

SURVEY @ 79.0mRT INC: 0.5°

WOB: 0-6 klbs
 RPM: 33-98
 SPP: 0-315 psi
 FLW: 405-450 gpm
 TRQ: 2.3-2.9 klb*ft

SURVEY @ 105.0mRT INC: 0.5°

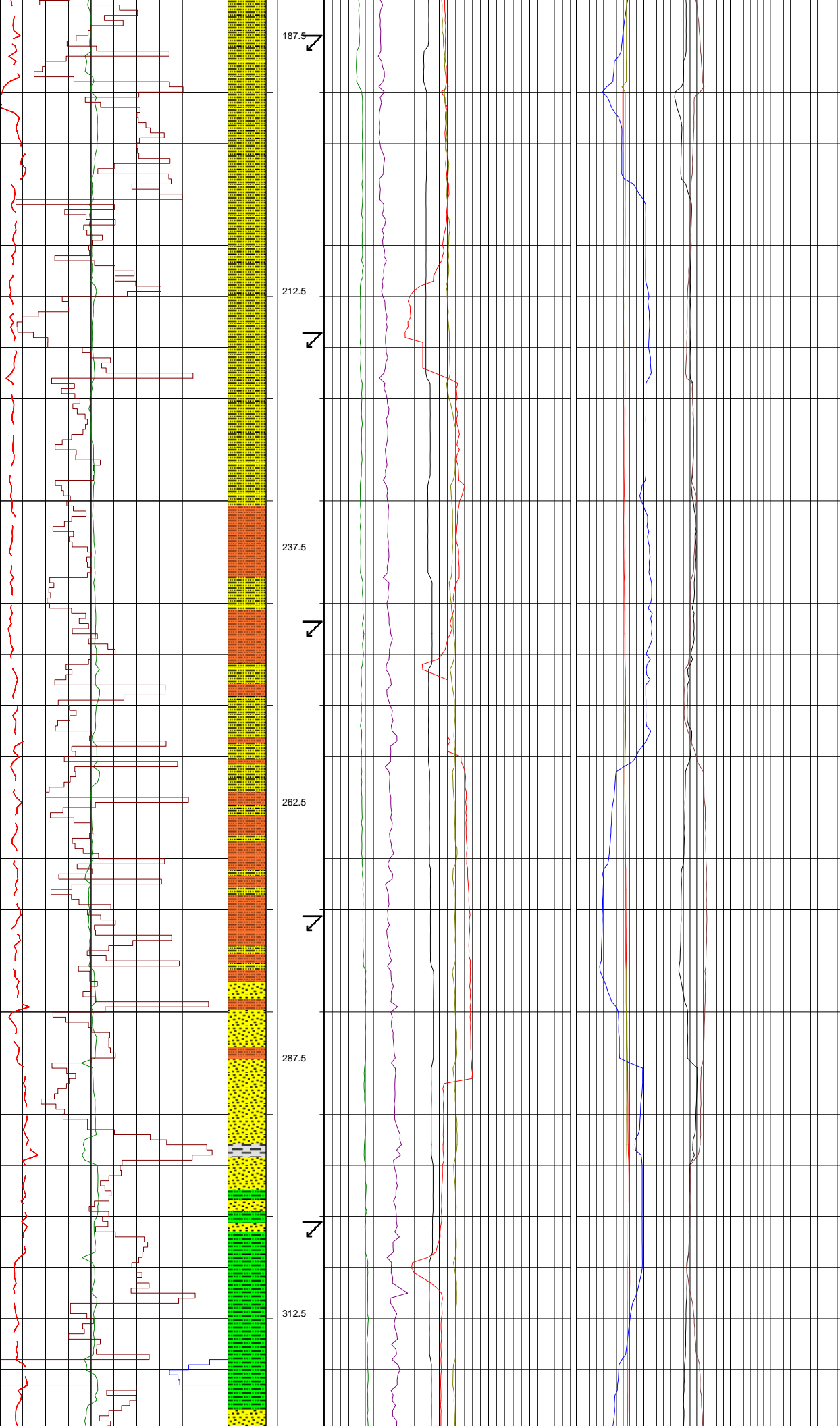
15-01-2013

SURVEY @ 130.0mRT INC: 0.5°

WOB: 1-6 klbs
 RPM: 74-103
 SPP: 298-460 psi
 FLW: 423-439 gpm
 TRQ: 2.2-2.6 klb*ft

SURVEY @ 159.0mRT INC: 0.5°

MW: 8.8ppg
 FV: 38
 PV: 5
 YP: 20
 GEL: 3/5
 pH: 9.5
 CL: 35K
 KCL: 4.0



SURVEY @ 187.0mRT INC: 0.5°

WOB: 0-7 klbs
RPM: 90-107
SPP: 310-470 psi
FLW: 347-427 gpm
TRQ: 2.1-2.5 klb*ft

SURVEY @ 216.0mRT INC: 0.5°

SURVEY @ 244.0mRT INC: 0.5°

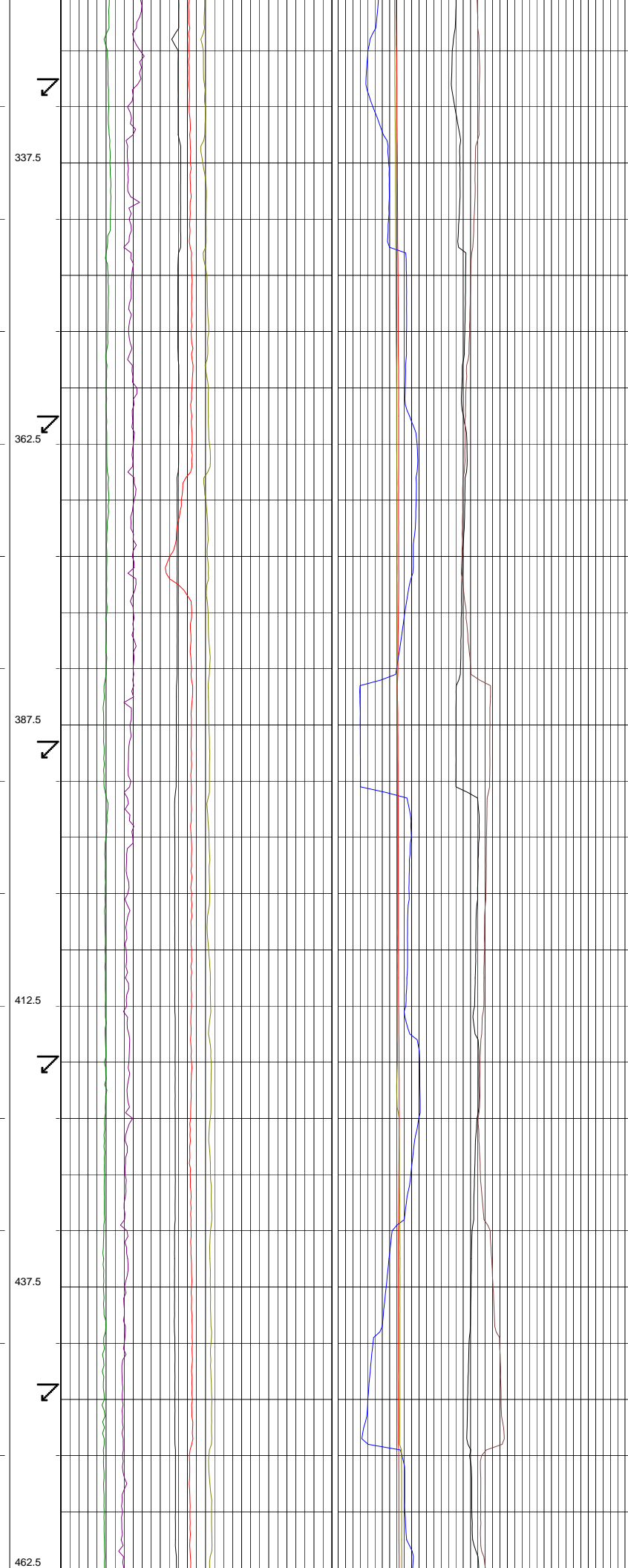
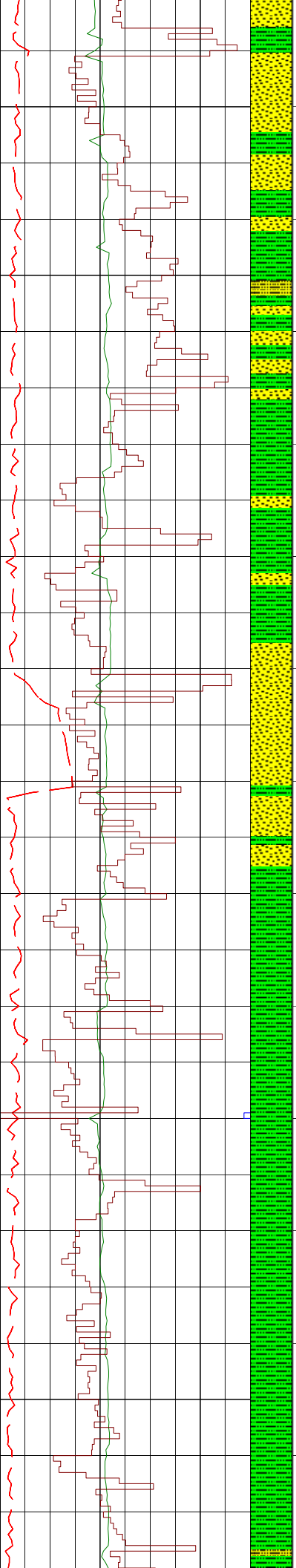
WOB: 1-5 klbs
RPM: 98-109
SPP: 439-484 psi
FLW: 412-438 gpm
TRQ: 2.2-2.7 klb*ft

MW: 9.0ppg
FV: 40
PV: 3
YP: 26
GEL: 4/6
pH: 9.5
CL: 40K
KCL: 4.0

SURVEY @ 273.0mRT INC: 0.5°

WOB: 2-8 klbs
RPM: 89-109
SPP: 441-512 psi
FLW: 423-445 gpm
TRQ: 2.4-3.1klb*ft

SURVEY @ 303.0mRT INC: 0.5°



SURVEY @ 330.0mRT INC: 0.5°

**WOB: 2-6 klbs
RPM: 85-111
SPP: 478-554 psi
FLW: 409-443 gpm
TRQ: 2.3-3.3 klb*ft**

SURVEY @ 360.0mRT INC: 0.5°

**MW: 9.0ppg
FV: 40
PV: 4
YP: 23
GEL: 5/7
pH: 9.0
CL: 38K
KCL: 4.0**

SURVEY @ 389.0mRT INC: 0.5°

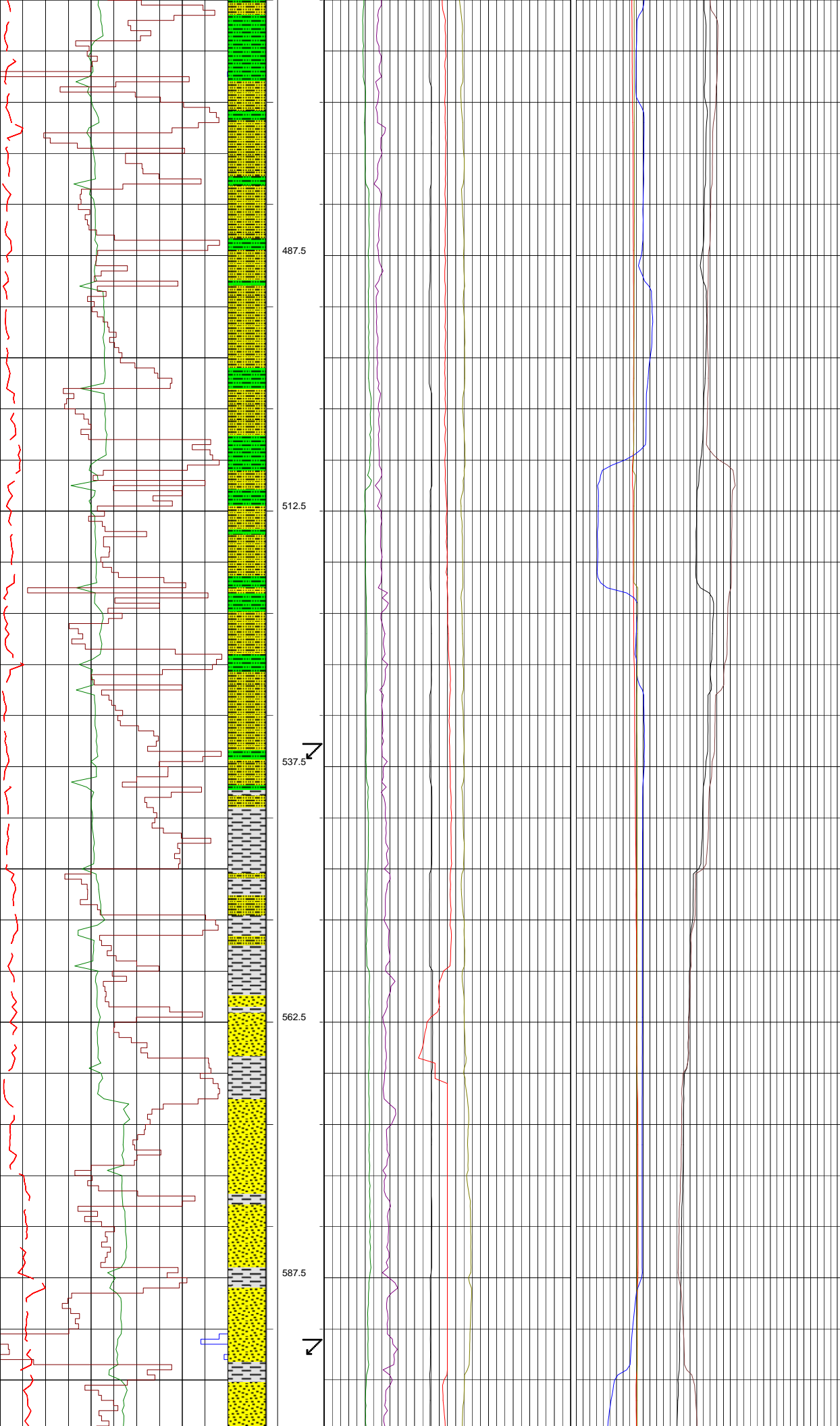
**WOB: 1-14 klbs
RPM: 92-112
SPP: 467-532 psi
FLW: 420-435 gpm
TRQ: 2.3-2.8 klb*ft**

SURVEY @ 417.0mRT INC: 0.5°

16-01-2013

SURVEY @ 446.0mRT INC: 0.5°

**WOB: 1-5 klbs
RPM: 89-109
SPP: 456-510 psi
FLW: 419-422 gpm
TRQ: 2.2-2.6 klb*ft**



WOB: 1-4 klbs
RPM: 81-115
SPP: 463-550 psi
FLW: 420-436 gpm
TRQ: 2.0-2.4 kb*ft

MW: 9.1ppg
FV: 45
PV: 6
YP: 26
GEL: 8/12
pH: 9.0
CL: 42K
KCL: 5.0

SURVEY @ 535.0mRT INC: 0.5°

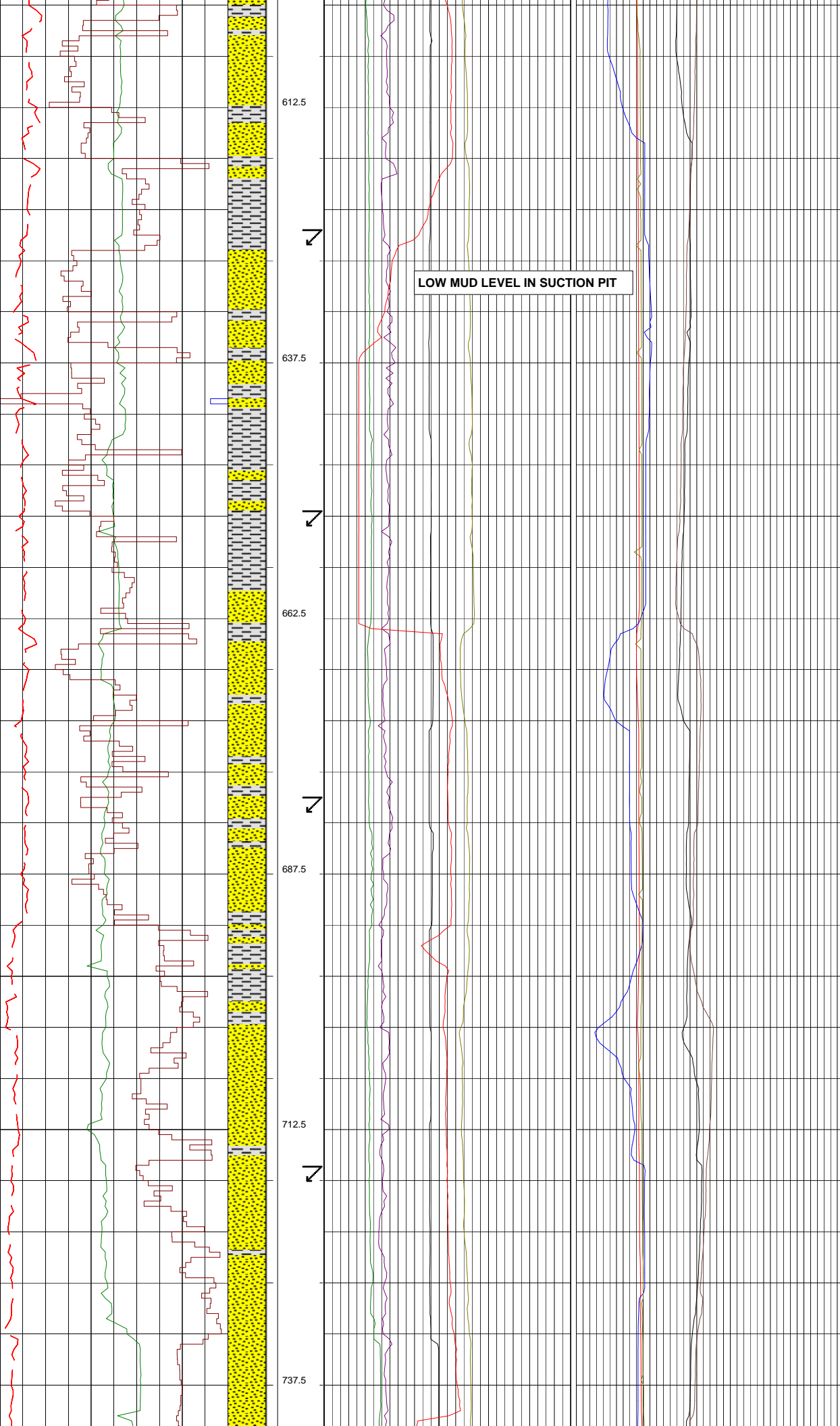
WOB: 1-5 klbs
RPM: 78-117
SPP: 492-577 psi
FLW: 428-437 gpm
TRQ: 2.0-2.6 kb*ft

MW: 9.1ppg
FV: 44
PV: 7
YP: 25
GEL: 7/11
pH: 9.5
CL: 46K
KCL: 4.0

SURVEY @ 593.0mRT INC: 0.5°

WOB: 1-10 klbs
RPM: 82-142
SPP: 521-577 psi
FLW: 428-437 gpm
TRQ: 2.0-2.6 kb*ft

SPP: 501-571 psi
FLW: 427-440 gpm
TRQ: 2.3-2.9 kib*ft



SURVEY @ 624.0mRT INC: 0.5°

MW: 9.1ppg
FV: 44
PV: 7
YP: 25
GEL: 7/11
pH: 9.5
CL: 46K
KCL: 4.0

SURVEY @ 652.0mRT INC: 0.5°

WOB: 3-9 kibs
RPM: 112-138
SPP: 502-589 psi
FLW: 424-437 gpm
TRQ: 2.3-2.9 kib*ft

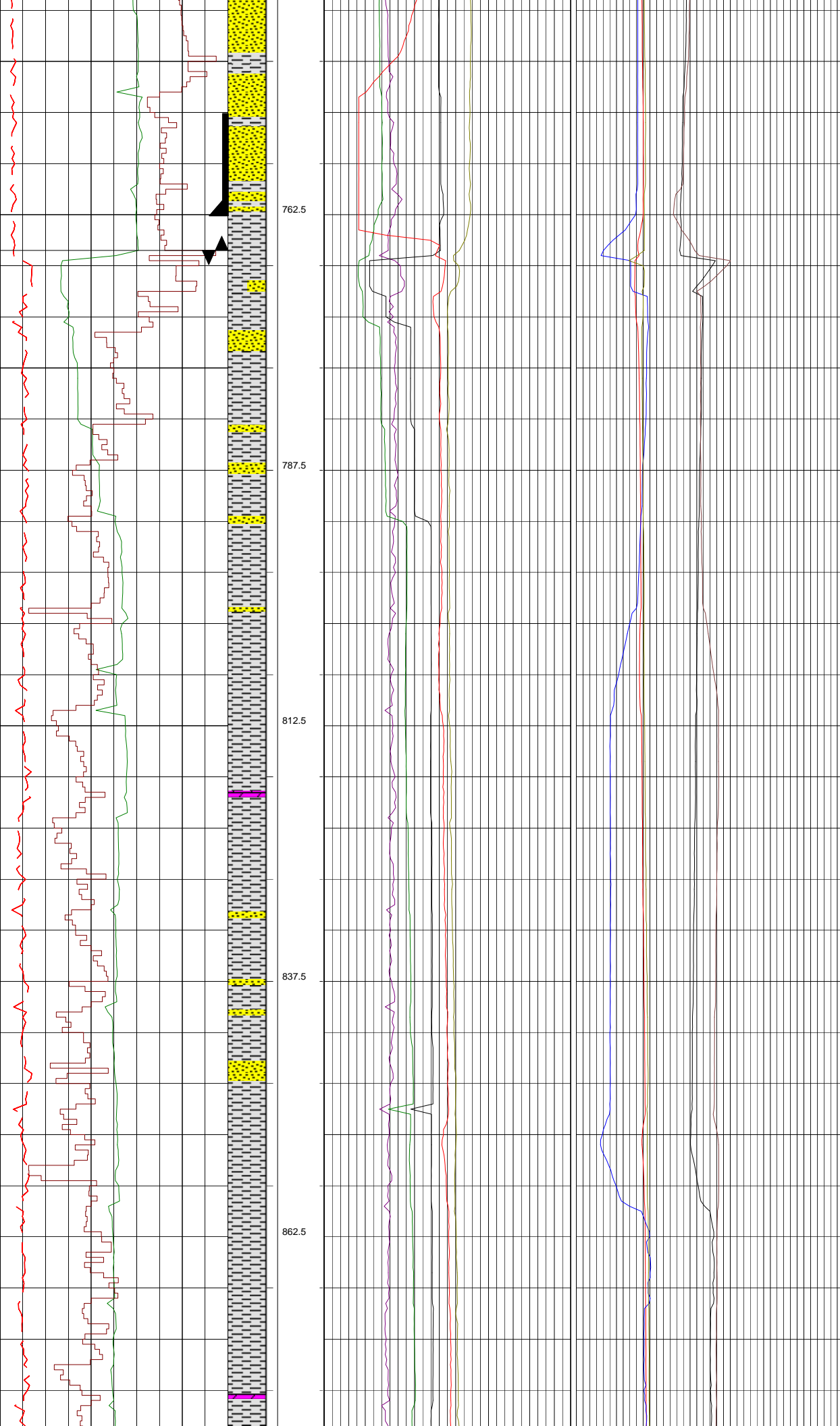
17-01-2013

SURVEY @ 680.0mRT INC: 0.5°

WOB: 1-8 kibs
RPM: 95-133
SPP: 527-603 psi
FLW: 426-442 gpm
TRQ: 2.1-2.7 kib*ft

SURVEY @ 716.0mRT INC: 0.75°

MW: 8.9ppg
FV: 49
PV: 15
YP: 25
GEL: 10/12/14
pH: 9.5
CL: 35.5K



KCL: 3.3

WOB: 1-4 klbs
 RPM: 95-155
 SPP: 519-690 psi
 FLW: 427-465 gpm
 TRQ: 2.2-2.8 klb*ft

CARBIDE LAG CHECK @ 759mMDRT
 AVERAGE HOLE SIZE: 12.48"

9-5/8" CASING SHOE
 SET AT 762.61mMDRT

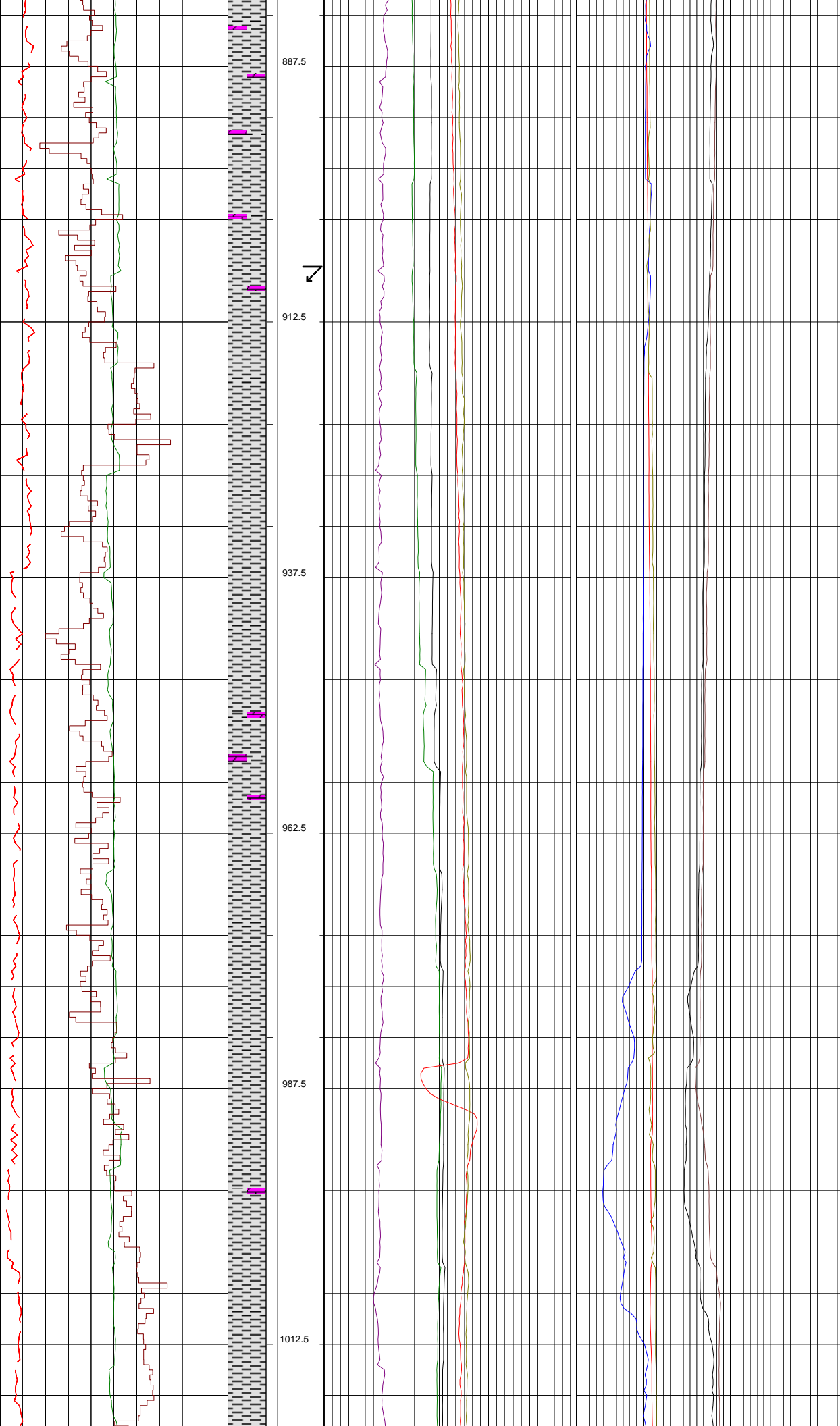
20-01-2013

BIT #2: HUGHES - Q505F
 SIZE: 8 1/2" JETS: 5X12
 IN: 766m OUT: 1138m
 RUN: 372m HRS: 16
 COND: 1-2-CT-S-X-1-RR-BHA

WOB: 3-7 klbs
 RPM: 67-135
 SPP: 415-1009 psi
 FLW: 184-434 gpm
 TRQ: 2.5-3.2 klb*ft

MW: 8.9ppg
 FV: 44
 PV: 11
 YP: 28
 GEL: 9/12/14
 pH: 9.5
 CL: 33.5K
 KCL: 3.5

WOB: 2-7 klbs
 RPM: 105-140
 SPP: 782-1085 psi
 FLW: 352-442 gpm
 TRQ: 2.2-2.9 klb*ft



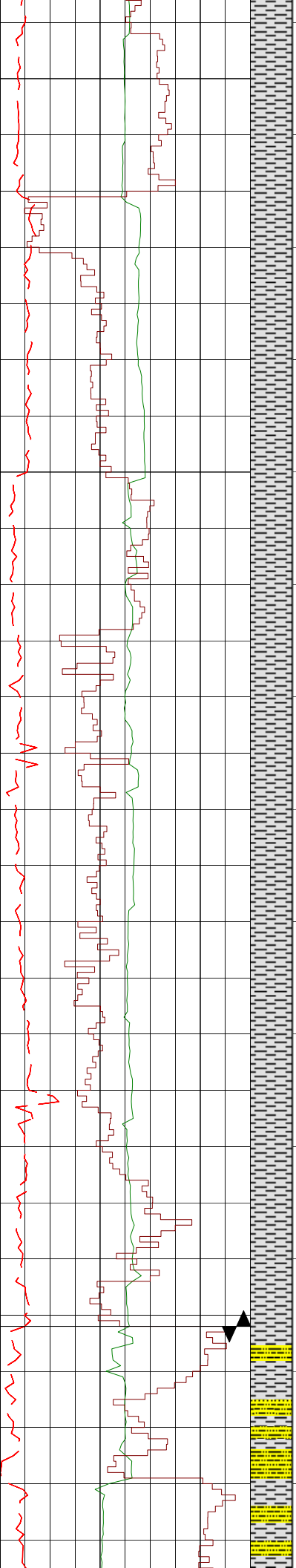
WOB: 3-7 klbs
RPM: 116-131
SPP: 1037-1112 psi
FLW: 429-443 gpm
TRQ: 2.2-2.7 klb*ft

SURVEY @ 907.0mRT INC: 0.5°

21-01-2013

WOB: 1-7 klbs
RPM: 89-133
SPP: 1070-1241 psi
FLW: 427-456 gpm
TRQ: 2.0-2.4 klb*ft

WOB: 1-5 klbs
RPM: 114-134
SPP: 1204-1428 psi
FLW: 446-487 gpm
TRQ: 2.0-2.4 klb*ft



1037.5



SURVEY @ 1043.0mRT INC: 1.75°

**WOB: 1-7 klbs
RPM: 119-141
SPP: 1354-1431 psi
FLW: 476-490 gpm
TRQ: 2.0-3.0 klb*ft**

1062.5

**MW: 9.0ppg
FV: 52
PV: 14
YP: 28
GEL: 18/20/22
pH: 9.5
CL: 34K
KCL: 4.0**

1087.5

**WOB: 1-7 klbs
RPM: 122-145
SPP: 864-1440 psi
FLW: 373-489 gpm
TRQ: 2.3-3.4 klb*ft**

1112.5

**MW: 9.0ppg
FV: 48
PV: 9
YP: 27
GEL: 17/20/23
pH: 9.5
CL: 35K
KCL: 4.5**

1137.5



SURVEY @ 1139.0mRT INC: 2.25°

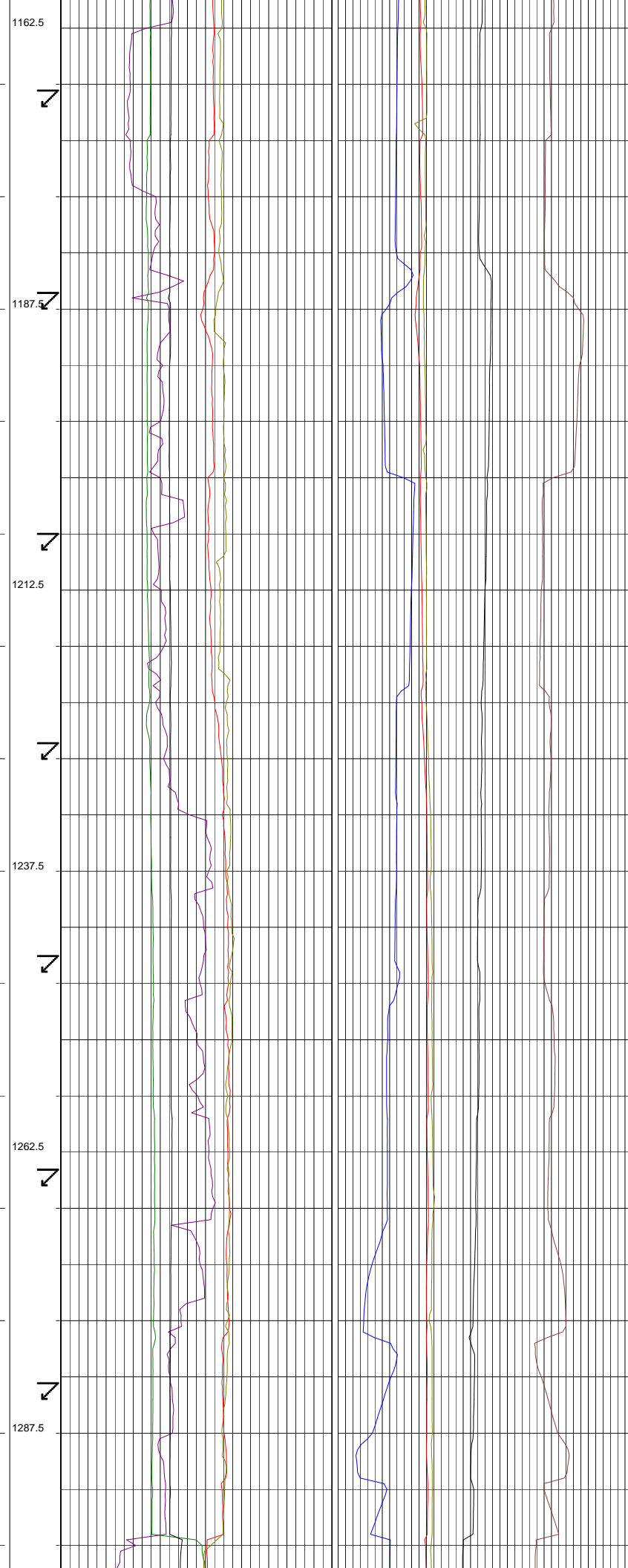
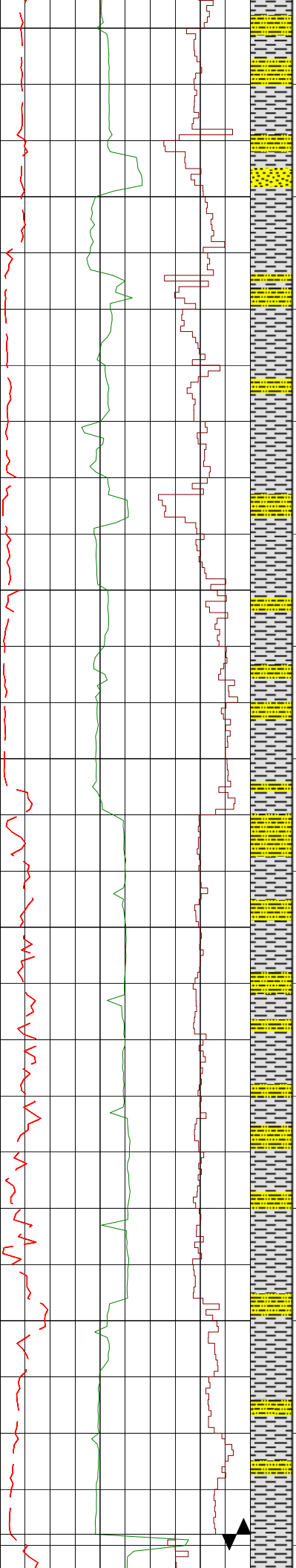
**BIT #2RR: HUGHES - Q505F
SIZE: 8½" JETS: 5X12
IN: 1138m OUT: 1296m
RUN: 158m HRS:20
COND:1-2-CT-S-X-1-RR-BHA**



SURVEY @ 1148.0mRT INC: 2.75°



SURVEY @ 1158.0mRT INC: 2.5°



SURVEY @ 1168.0mRT INC: 2.75°

**WOB: 1-11 klbs
RPM: 82-142
SPP: 900-993 psi
FLW: 369-410 gpm
TRQ: 2.3-5.5 klb*ft**

SURVEY @ 1207.0mRT INC: 3.5°

SURVEY @ 1226.0mRT INC: 3.0°

SURVEY @ 1245.0mRT INC: 2.75°

**WOB: 1-7 klbs
RPM: 90-128
SPP: 945-1030 psi
FLW: 399-408 gpm
TRQ: 3.2-5.6 klb*ft**

**MW: 9.0ppg
FV: 43
PV: 6
YP: 28
GEL: 10/12/14
pH: 9.0
CL: 35K
KCL: 4.0**

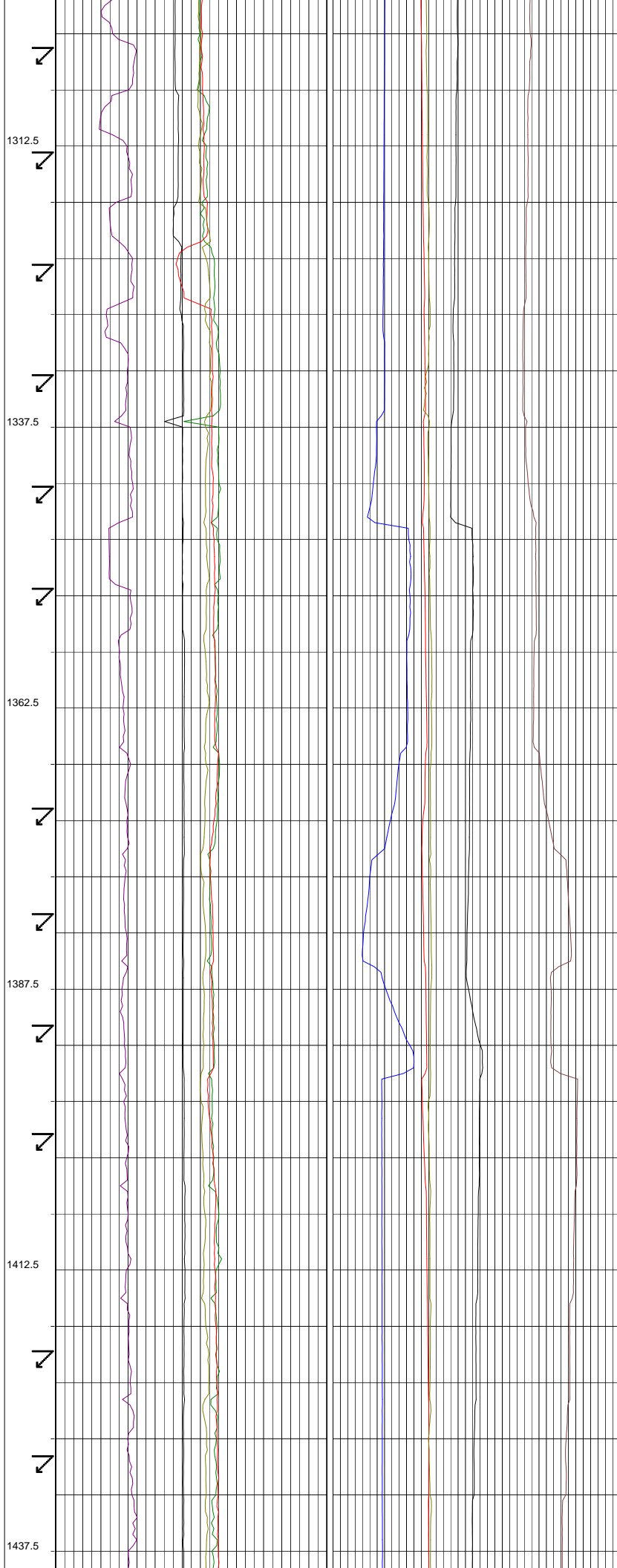
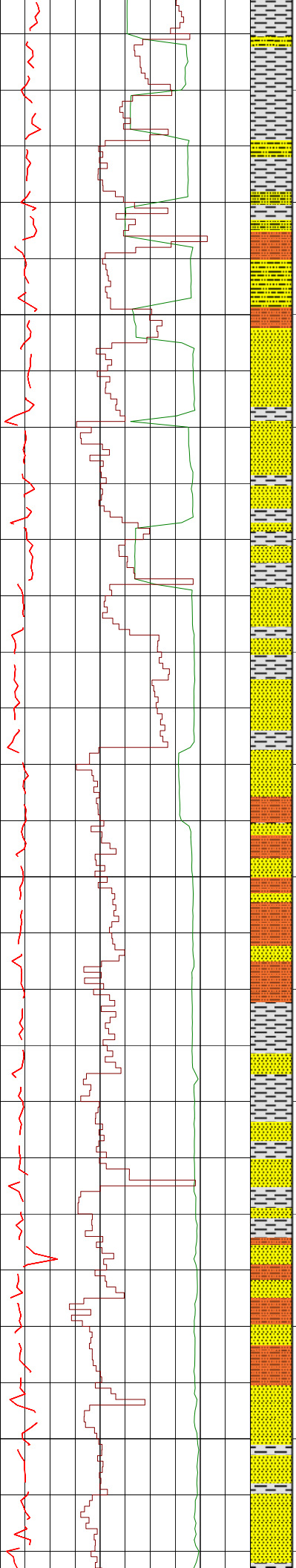
SURVEY @ 1264.0mRT INC: 2.75°

SURVEY @ 1283.0mRT INC: 3.0°

**BIT #3: HUGHES - Q505F
SIZE: 8½" JETS: 5X12
IN: 1296m OUT: 1926.5m
RUN: 630.5m HRS:46.6
COND:2-7-RO-S-X-I-BT-PR**

25-01-2013

SURVEY @ 1303.6mRT



INC: 1.85° AZI: 158.99°

MW: 9.1ppg
FV: 41
PV: 6
YP: 27
GEL: 12/14/16
pH: 9.0
CL: 34K
KCL: 4.0

SURVEY @ 1313.2mRT
INC: 1.23° AZI: 151.31°

SURVEY @ 1322.9mRT
INC: 0.88° AZI: 142.34°

SURVEY @ 1332.6mRT
INC: 0.70° AZI: 139.55°

SURVEY @ 1342.2mRT
INC: 0.53° AZI: 132.53°

WOB: 1-9 klbs
RPM: 92-195
SPP: 1007-1825 psi
FLW: 402-472 gpm
TRQ: 1.6-5.6 klb*ft

SURVEY @ 1351.9mRT
INC: 0.18° AZI: 123.62°

SURVEY @ 1371.3mRT
INC: 0.18° AZI: 101.48°

SURVEY @ 1380.9mRT
INC: 0.35° AZI: 93.29°

SURVEY @ 1390.7mRT
INC: 0.18° AZI: 93.86°

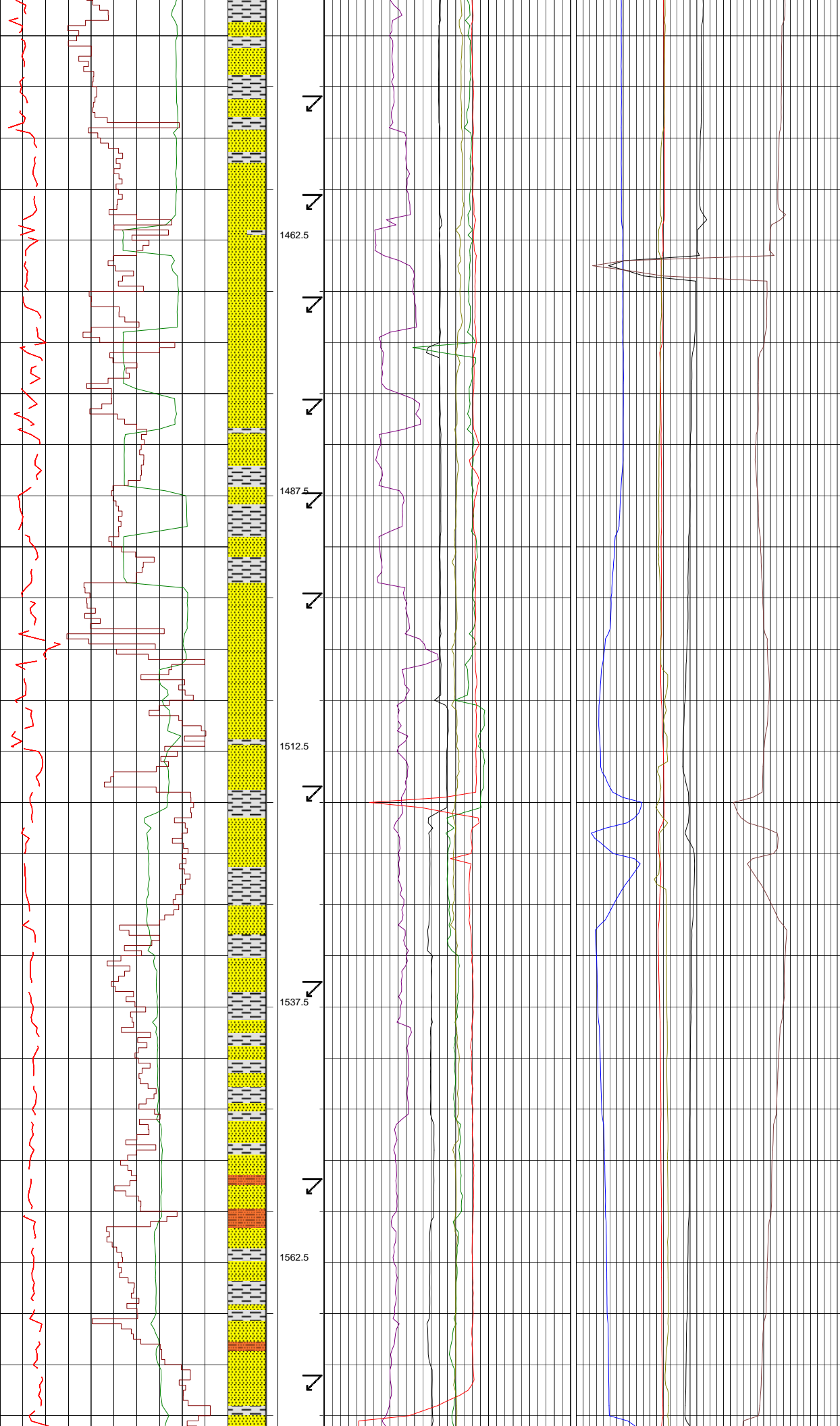
SURVEY @ 1400.3mRT
INC: 0.44° AZI: 91.7°

WOB: 1-6 klbs
RPM: 134-198
SPP: 1677-1821 psi
FLW: 467-475 gpm
TRQ: 1.9-2.8 klb*ft

SURVEY @ 1419.6mRT
INC: 0.53° AZI: 93.26°

SURVEY @ 1429.3mRT
INC: 0.62° AZI: 87.59°

MW: 9.1ppg
FV: 40
PV: 8
YP: 22
GEL: 9/11/13
pH: 9.0
CL: 35K
KCL: 4.5



KCL: 4.5

SURVEY @ 1448.6mRT
 INC: 0.44° AZI: 78.86°

WOB: 1-11 klbs
 RPM: 188-199
 SPP: 1690-1836 psi
 FLW: 464-478 gpm
 TRQ: 2.3-3.1 kib*ft

SURVEY @ 1458.2mRT
 INC: 0.44° AZI: 72.88°

SURVEY @ 1467.9mRT
 INC: 0.44° AZI: 64.01°

SURVEY @ 1477.6mRT
 INC: 0.62° AZI: 20.79°

SURVEY @ 1487.2mRT
 INC: 0.79° AZI: 348.4°

SURVEY @ 1515.8mRT
 INC: 1.49° AZI: 334.75°

MW: 9.1ppg
 FV: 43
 PV: 9
 YP: 22
 GEL: 10/12/14
 pH: 9.0
 CL: 34K
 KCL: 4.0

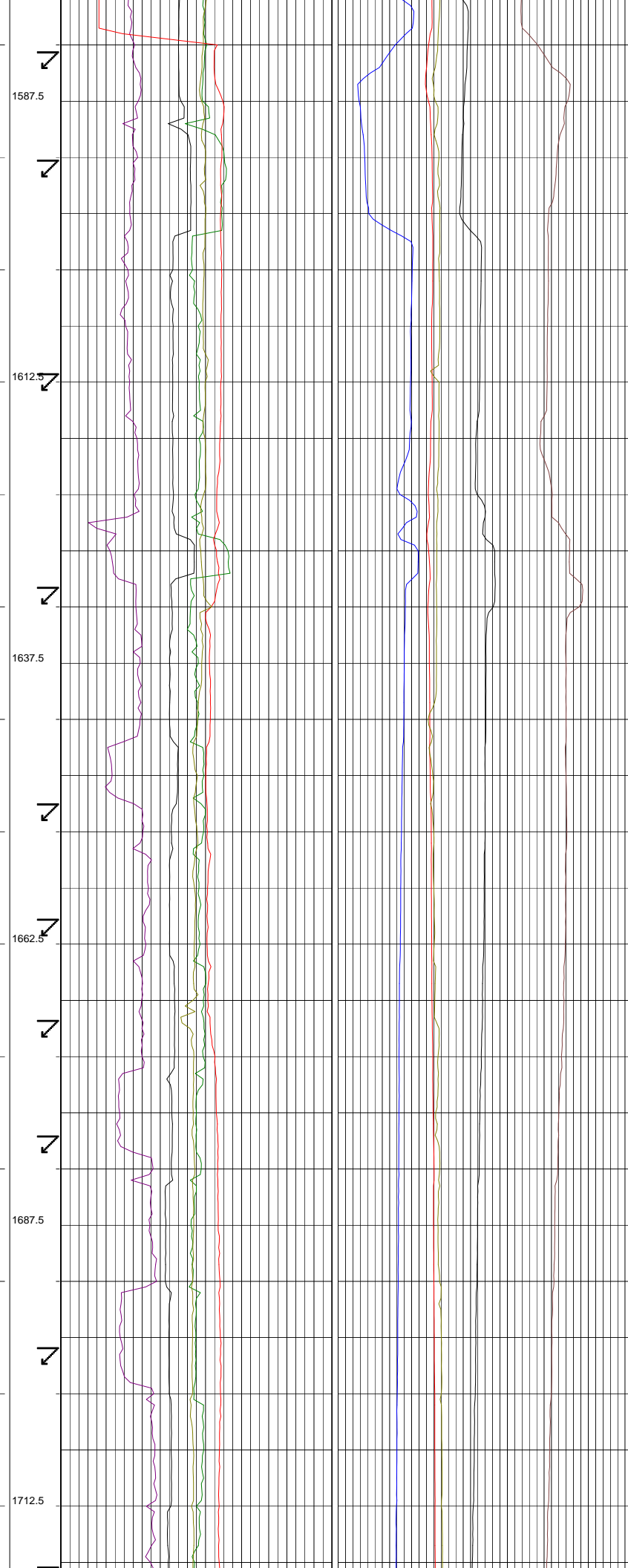
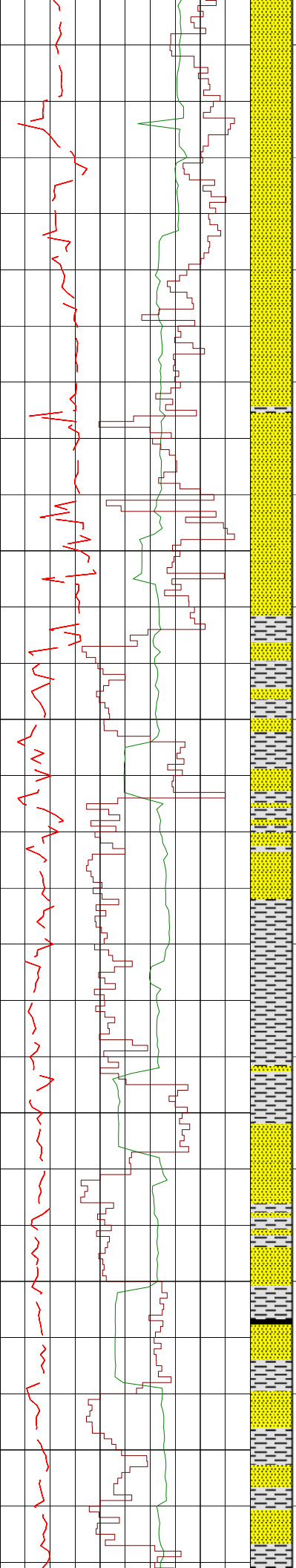
SURVEY @ 1535.0mRT
 INC: 1.41° AZI: 326.88°

SURVEY @ 1554.3mRT
 INC: 1.32° AZI: 322.23°

WOB: 3-13 klbs
 RPM: 159-205
 SPP: 1482-1954 psi
 FLW: 419-504 gpm
 TRQ: 2.8-4.6 kib*ft

27-01-2013

SURVEY @ 1573.5mRT
 INC: 1.32° AZI: 319.45°



SURVEY @ 1583.1mRT
INC: 1.32° AZI: 320.67°

SURVEY @ 1592.6mRT
INC: 1.41° AZI: 322.46°

WOB: 3-17 klbs
RPM: 138-187
SPP: 1376-1831 psi
FLW: 396-480 gpm
TRQ: 2.2-3.0 kib*ft

SURVEY @ 1611.7mRT
INC: 1.06° AZI: 302.07°

SURVEY @ 1631.0mRT
INC: 0.88° AZI: 306.20°

WOB: 3-19 klbs
RPM: 124-165
SPP: 1398-1872 psi
FLW: 400-493 gpm
TRQ: 1.0-2.9 kib*ft

SURVEY @ 1650.2mRT
INC: 1.06° AZI: 315.80°

SURVEY @ 1659.9mRT
INC: 0.88° AZI: 316.77°

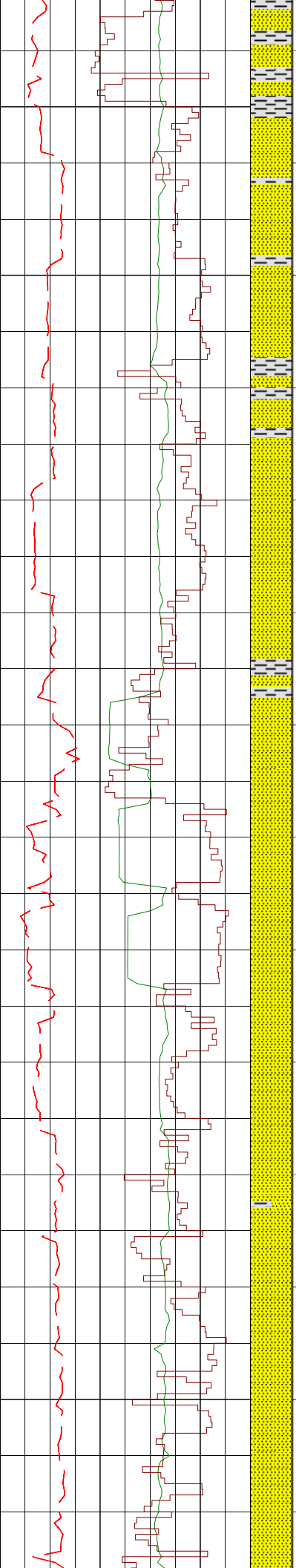
SURVEY @ 1669.6mRT
INC: 0.97° AZI: 331.96°

SURVEY @ 1679.3mRT
INC: 1.06° AZI: 334.98°

SURVEY @ 1698.7mRT
INC: 1.41° AZI: 336.32°

WOB: 5-12 klbs
RPM: 124-165
SPP: 1419-1605 psi
FLW: 385-421 gpm
TRQ: 2.1-3.5 kib*ft

SURVEY @ 1718.0mRT
INC: 1.32° AZI: 329.29°



1737.5

1762.5

1787.5

1812.5

1837.5

MW: 9.1ppg
FV: 43
PV: 10
YP: 20
GEL: 11/12/14
pH: 9.0
CL: 35K
KCL: 3.3

SURVEY @ 1737.4mRT
INC: 1.32° AZI: 323.97°

SURVEY @ 1747.0mRT
INC: 1.41° AZI: 319.35°

WOB: 5-13 klbs
RPM: 115-166
SPP: 1415-1581 psi
FLW: 393-412 gpm
TRQ: 2.3-3.5 klb*ft

SURVEY @ 1766.2mRT
INC: 1.23° AZI: 307.68°

SURVEY @ 1785.6mRT
INC: 1.14° AZI: 300.79°

SURVEY @ 1795.4mRT
INC: 1.32° AZI: 300.39°

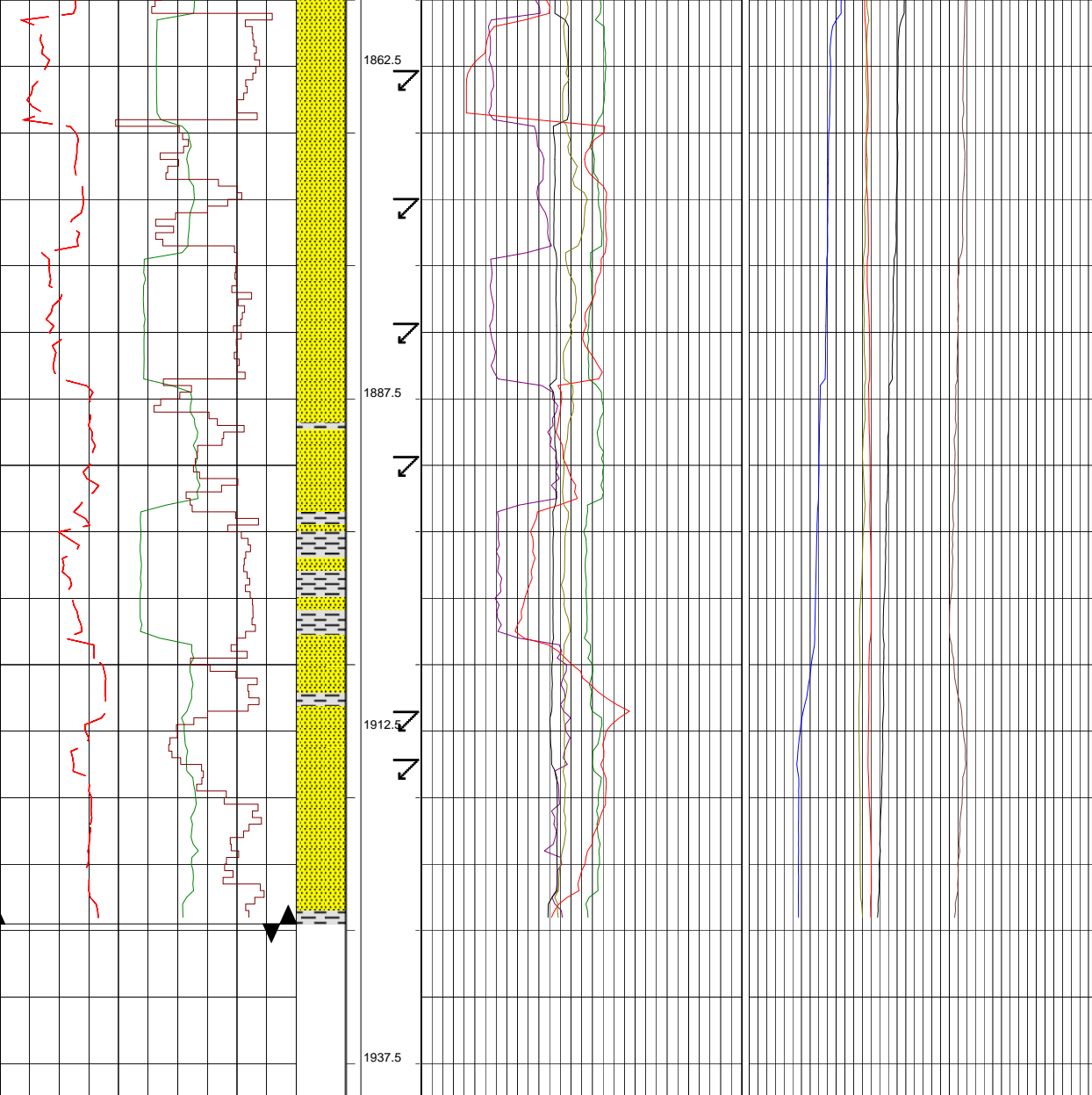
WOB: 4-15 klbs
RPM: 109-168
SPP: 1419-1616 psi
FLW: 377-443 gpm
TRQ: 1.7-3.4 klb*ft

SURVEY @ 1805.1mRT
INC: 1.41° AZI: 300.93°

SURVEY @ 1824.4mRT
INC: 1.32° AZI: 299.88°

SURVEY @ 1843.4mRT
INC: 1.14° AZI: 293.37°

WOB: 2-12 klbs
RPM: 127-169
SPP: 1480-1665 psi
FLW: 401-443 gpm
TRQ: 1.0-3.5 klb*ft



SURVEY @ 1862.8mRT
INC: 0.97° AZI: 298.57°

SURVEY @ 1872.5mRT
INC: 1.06° AZI: 302.83°

SURVEY @ 1882.0mRT
INC: 1.06° AZI: 302.83°

SURVEY @ 1891.7mRT
INC: 1.06° AZI: 305.89°

WOB: 4-16 klbs
RPM: 118-169
SPP: 1520-1728 psi
FLW: 400-460 gpm
TRQ: 2.1-4.3 klb*ft

SURVEY @ 1911.0mRT
INC: 1.06° AZI: 100.99°

SURVEY @ 1914.8mRT
INC: 0.97° AZI: 301.81°

TRICLOPS-1 REACHED TD
@ 18:00 HRS ON 28-01-2013